

KD-Validated Anti-DDX50 Mouse Monoclonal Antibody



Catalog #: 63883

Aliases

DDX50; DExD-Box Helicase 50; RH-II/GuB; GU2; GUB; DEAD (Asp-Glu-Ala-Asp) Box Polypeptide 50; ATP-Dependent RNA Helicase DDX50; DEAD-Box Helicase 50; DEAD Box Protein 50; MGC3199; Gu-Beta; Malignant Cell Derived RNA Helicase; RNA Helicase II/Gu Beta; Nucleolar Protein GU2; Nucleolar Protein Gu2; EC 3.6.4.13; EC 3.6.1; Mcdrh

Background

Gene Name: DDX50

NCBI Gene Entry: [79009](#)

UniProt Entry: [Q9BQ39](#)

Application Information

Molecular Weight: Predicted, 83 kDa; observed, 83 kDa

Clonality: Mouse monoclonal antibody

Clone ID: 24GB8345

Species Reactivity: Human, mouse, rat

Applications Tested: Western blotting (WB), immunocytochemistry (IC)

Immunogen

Recombinant protein of human DDX50

Isotype

Mouse IgG2b

Storage Buffer

Supplied in PBS (pH 7.4) containing 50% glycerol, and 0.02% sodium azide.

Storage

Store at -20 °C for one year.

Recommended Dilutions

Western Blotting (WB): 1:500-1:2,500

Immunocytochemistry (IC): 1:100-1:1,000

Note: This product is for research use only.

SUPPORT

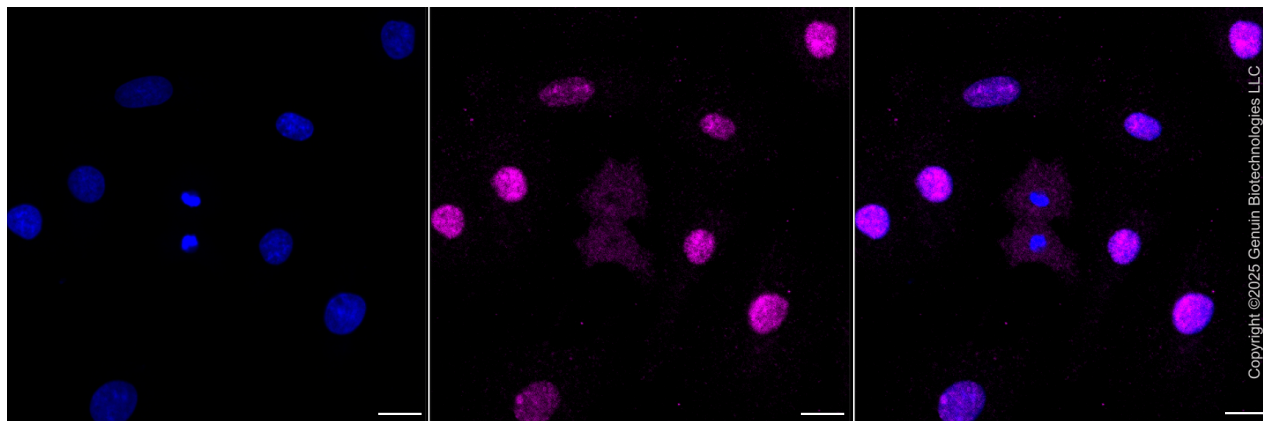
SUPPORT@GENUINBIOTECH.COM
TEL: +1-540-855-7041

ORDERS

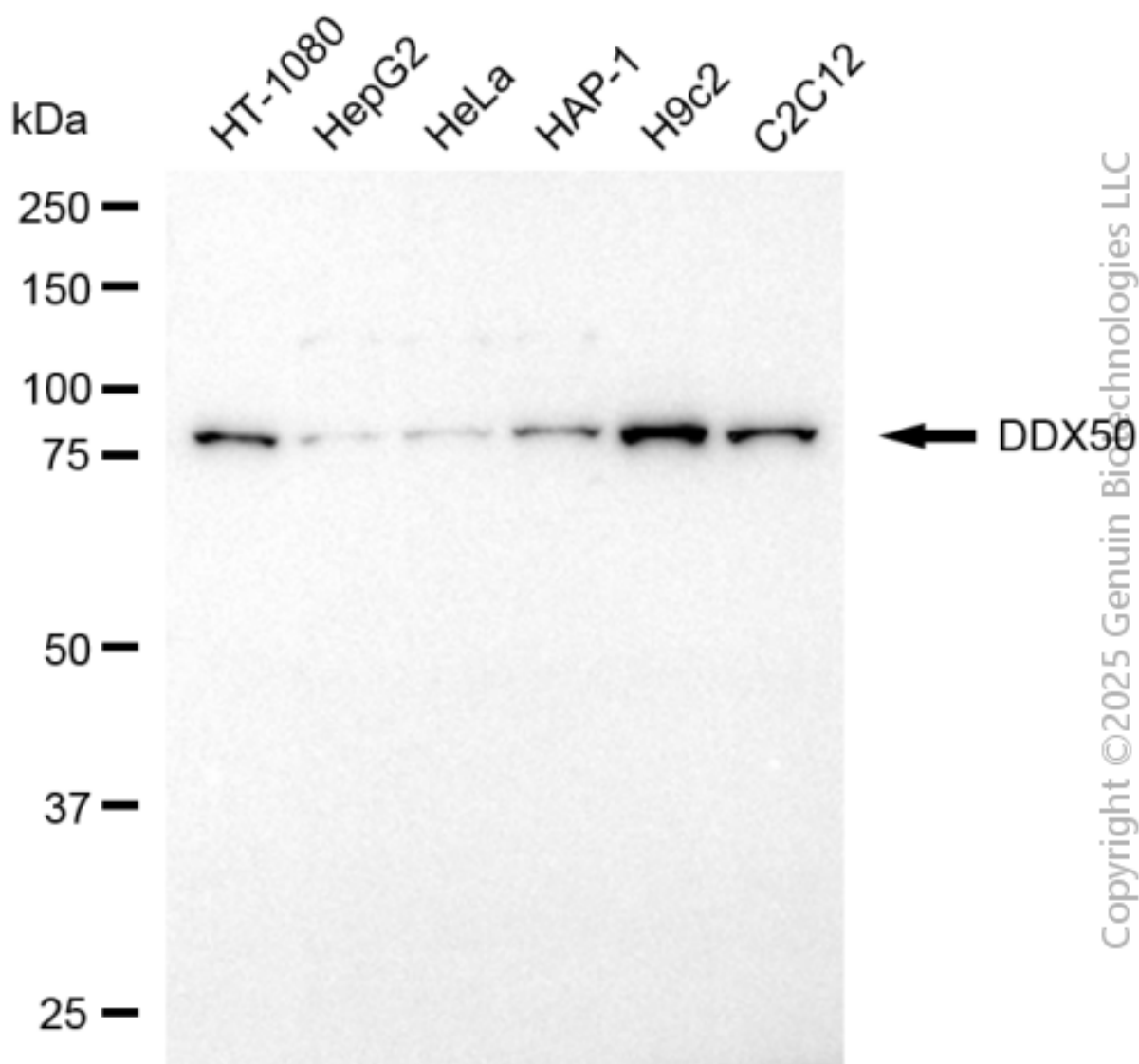
SALES@GENUINBIOTECH.COM
FAX: +1-540-855-7041

WWW.GENUINBIOTECH.COM

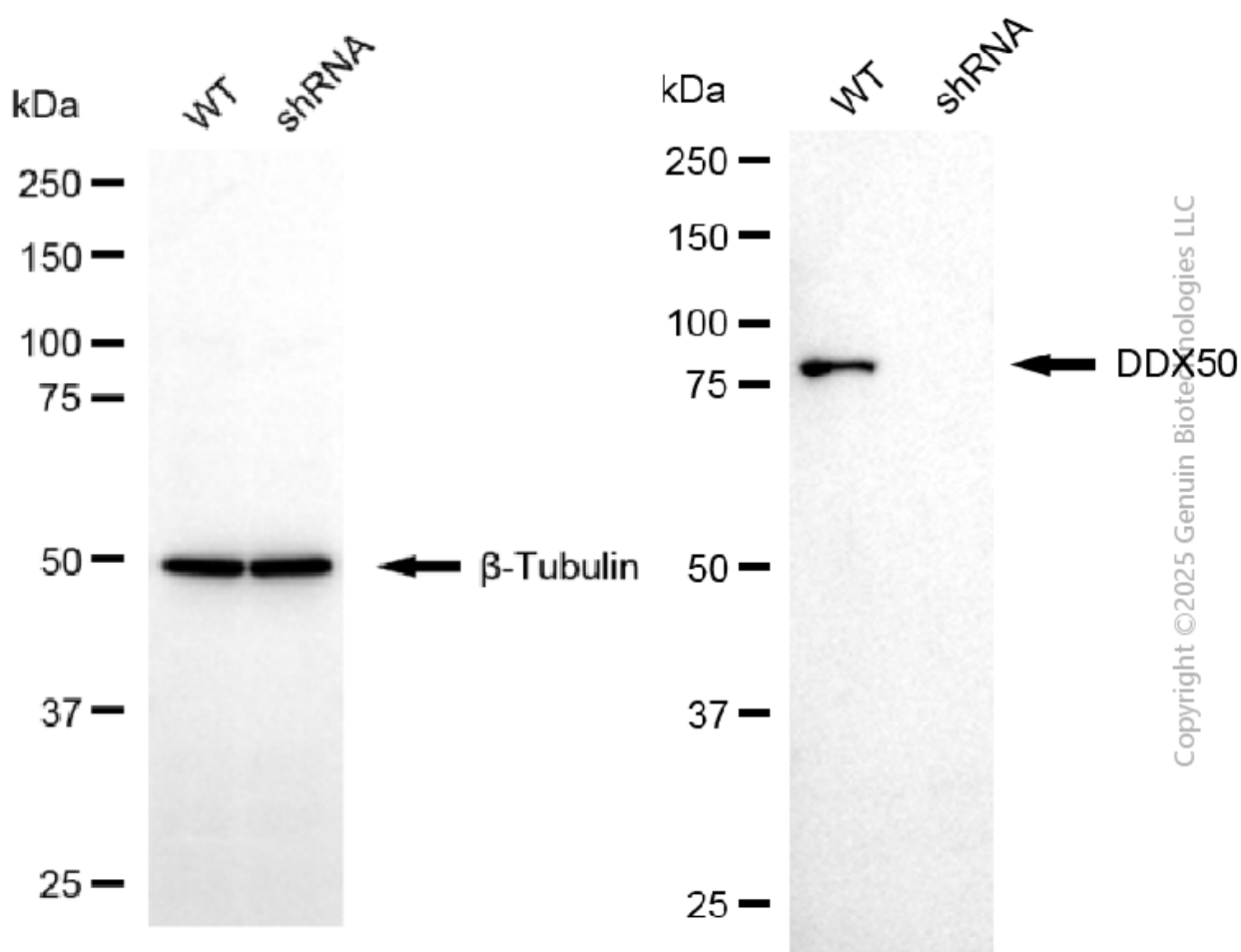
Validation Data



Immunocytochemical staining of H9c2 cells with anti-DDX50 antibody (Cat#63883, 1:1,000) . Nuclei were stained blue with DAPI; DDX50 was stained magenta with Alexa Fluor® 647. Images were taken using Leica stellaris 5. Protein abundance based on laser Intensity and smart gain: Low. Scale bar, 20 μ m.



Western blotting analysis using anti-DDX50 antibody (Cat#63883). Total cell lysates (30 µg) from various cell lines were loaded and separated by SDS-PAGE. The blot was incubated with anti-DDX50 antibody (Cat#63883, 1:2,500) and HRP-conjugated goat anti-mouse secondary antibody (Cat#101, 1:20,000) respectively. Image was developed using NaQ™ ECL Substrate Kit (Cat#716).



Western blotting analysis using anti-DDX50 antibody (Cat#63883). DDX50 expression in wild type (WT) and DDX50 shRNA knockdown (KD) HT-1080 cells with 20 µg of total cell lysates. β-Tubulin serves as a loading control. The blot was incubated with anti-DDX50 antibody (Cat#63883, 1:2,500) and HRP-conjugated goat anti-mouse secondary antibody (Cat#101, 1:20,000) respectively. Image was developed using NaQ™ ECL Substrate Kit (Cat#716).