

# KD-Validated Anti-CDA Rabbit Monoclonal Antibody



**Catalog #: 63896**

## Aliases

CDA; Cytidine Deaminase; CDD; Cytidine Aminohydrolase; Cytosine Nucleoside Deaminase; Small Cytidine Deaminase; EC 3.5.4.5

## Background

Gene Name: CDA

NCBI Gene Entry: [978](#)

UniProt Entry: [P32320](#)

## Application Information

Molecular Weight: Predicted, 16 kDa; observed, 16 kDa

Clonality: Rabbit monoclonal antibody

Clone ID: 24GB6890

Species Reactivity: Human

Applications Tested: Western blotting (WB), flow cytometry (FCM), immunocytochemistry (IC)

## Immunogen

Recombinant protein of human CDA

## Isotype

Rabbit IgG

## Storage Buffer

Supplied in PBS (pH 7.4) containing 50% glycerol, and 0.02% sodium azide.

## Storage

Store at -20 °C for one year.

## Recommended Dilutions

Western Blotting (WB): 1:1,000-1:5,000

Flow Cytometry (FCM): 1:2,000

Immunocytochemistry (IC): 1:100-1:1,000

**Note:** This product is for research use only.

## Validation Data

---

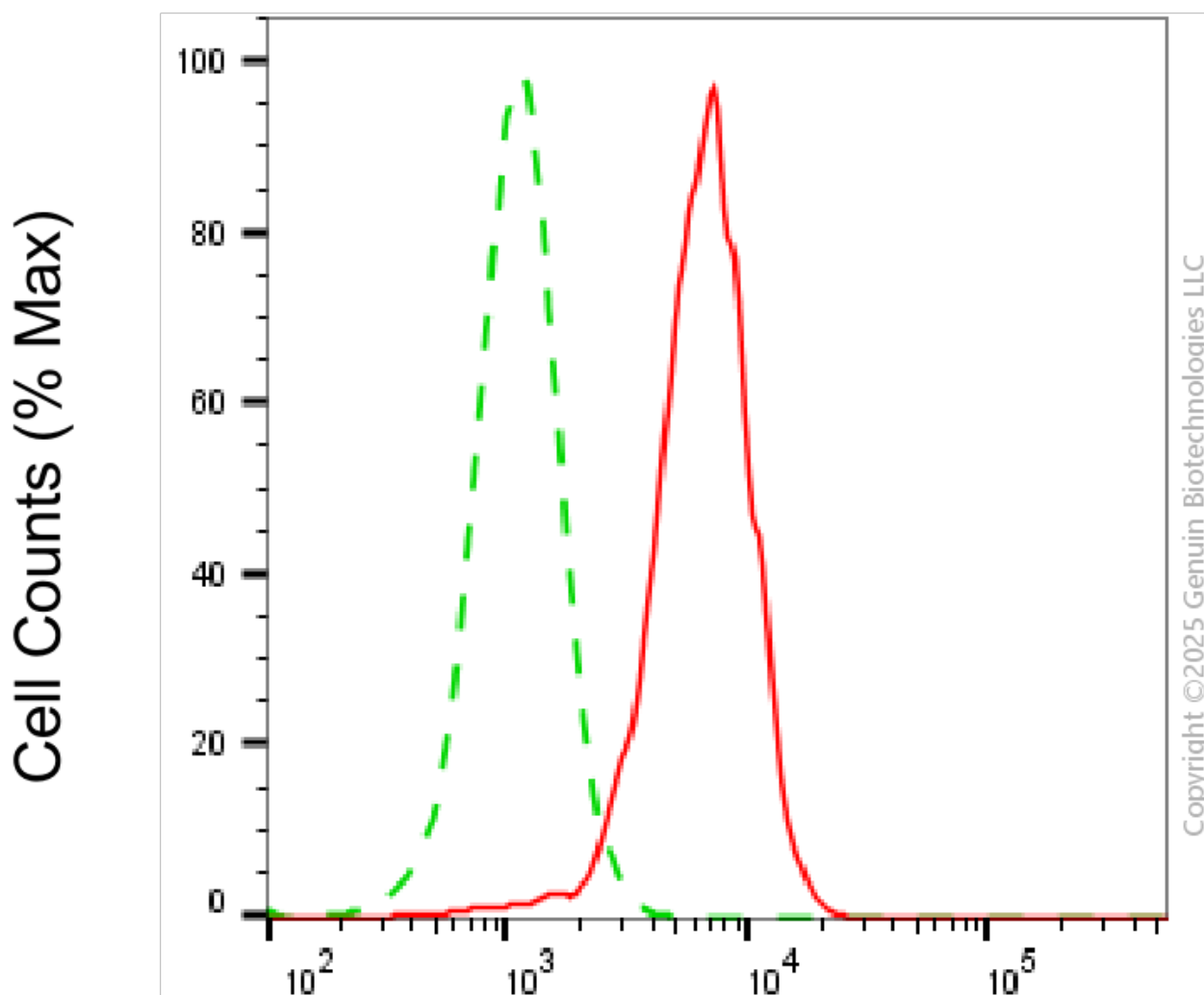
### SUPPORT

SUPPORT@GENUINBIOTECH.COM  
TEL: +1-540-855-7041

### ORDERS

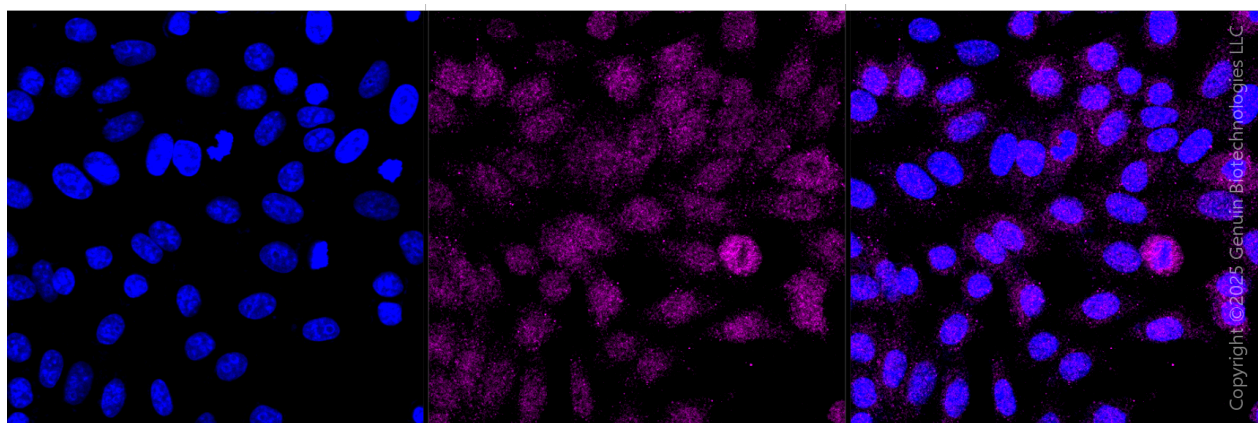
SALES@GENUINBIOTECH.COM  
FAX: +1-540-855-7041

[WWW.GENUINBIOTECH.COM](http://WWW.GENUINBIOTECH.COM)



## Cytidine deaminase-Alexa Fluor® 647

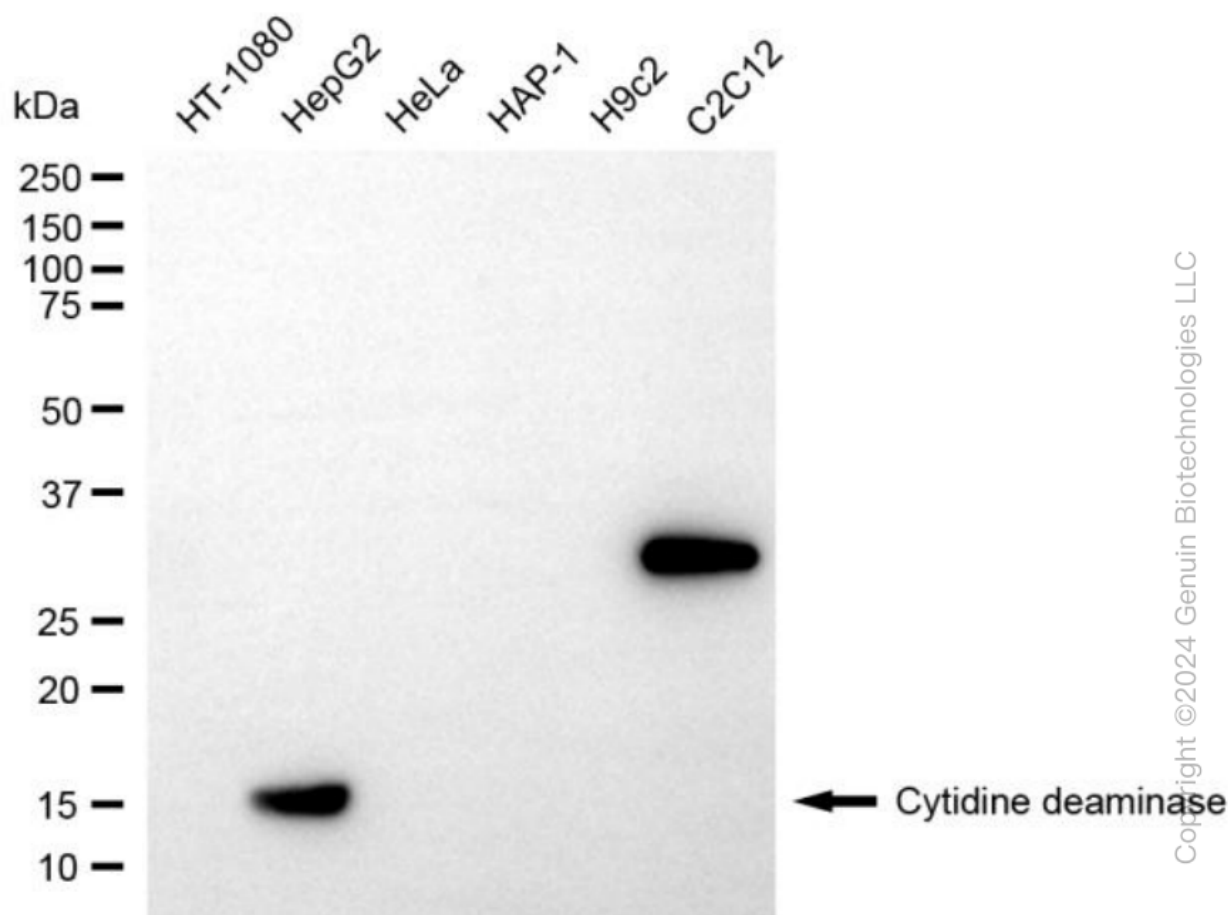
Flow cytometric analysis of Cytidine deaminase expression in HepG2 cells using anti-Cytidine deaminase antibody (Cat#63896, 1:2,000). Green, isotype control; red, Cytidine deaminase.



## KD-Validated Anti-CDA Rabbit Monoclonal Antibody

PAGE 3

Immunocytochemical staining of HepG2 cells with anti-Cytidine deaminase antibody (Cat#63896, 1:1,000). Nuclei were stained blue with DAPI; Cytidine deaminase was stained magenta with Alexa Fluor® 647. Images were taken using Leica stellaris 5. Protein abundance based on laser Intensity and smart gain: Medium. Scale bar, 20 µm.



Western blotting analysis using anti-cytidine deaminase antibody (Cat#63896). Total cell lysates (30 µg) from various cell lines were loaded and separated by SDS-PAGE. The blot was incubated with anti-cytidine deaminase antibody (Cat#63896, 1:5,000) and HRP-conjugated goat anti-rabbit secondary antibody (Cat#201, 1:20,000) respectively. Image was developed using NaQ™ ECL Substrate Kit (Cat#716).

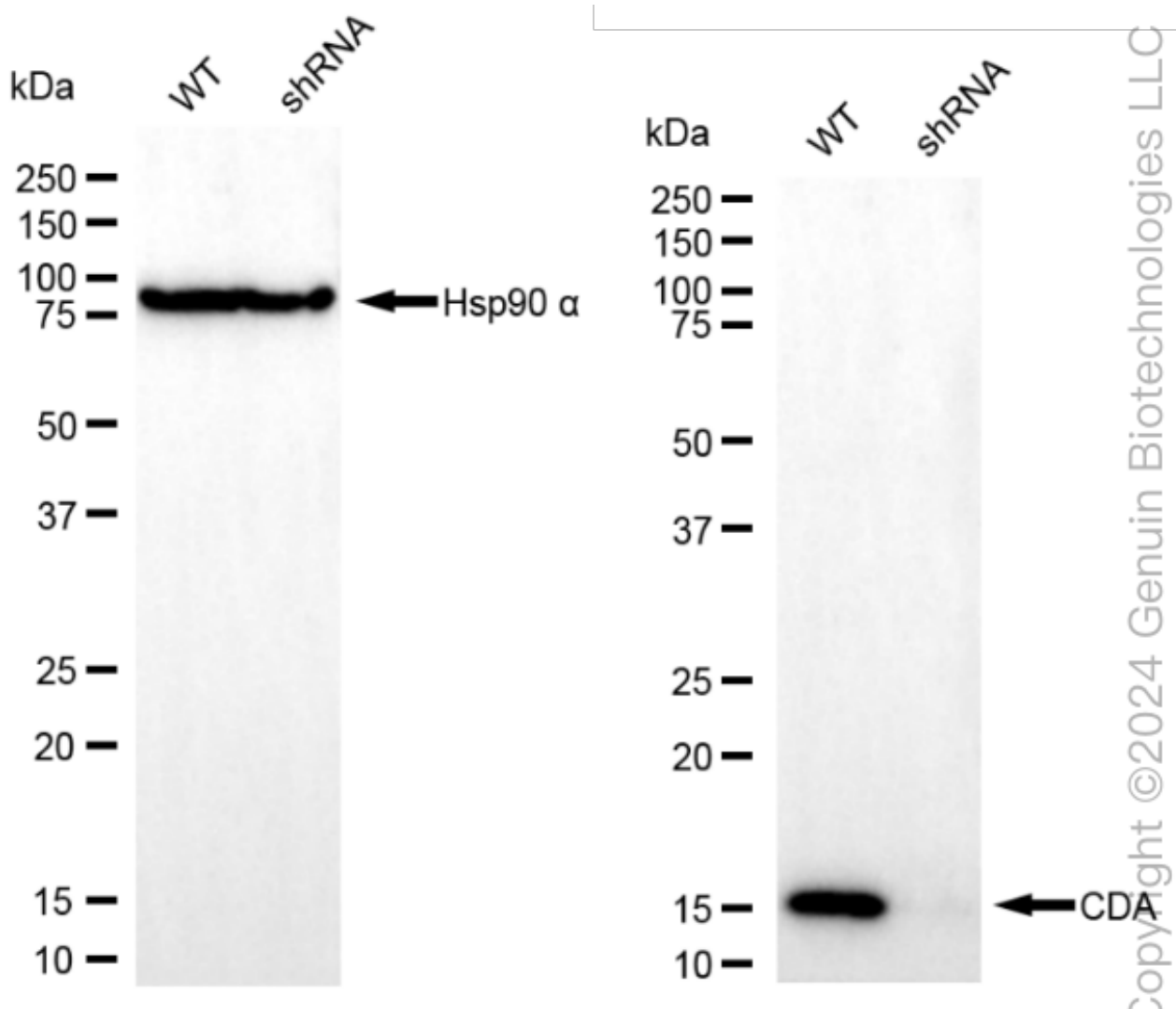
### SUPPORT

SUPPORT@GENUINBIOTECH.COM  
TEL: +1-540-855-7041

### ORDERS

SALES@GENUINBIOTECH.COM  
FAX: +1-540-855-7041

WWW.GENUINBIOTECH.COM



Western blotting analysis using anti-cytidine deaminase antibody (Cat#63896). Cytidine deaminase expression in wild type (WT) and cytidine deaminase (CDA) knockdown (KD) HSHC cells with 20 µg of total cell lysates. Hsp90 α serves as a loading control. The blot was incubated with anti-cytidine deaminase antibody (Cat#63896, 1:5,000) and HRP-conjugated goat anti-rabbit secondary antibody (Cat#201, 1:20,000) respectively. Image was developed using NaQ™ ECL Substrate Kit (Cat#716).