

# KD-Validated Anti-PCAF Recombinant Rabbit Monoclonal Antibody



**Catalog #: 64121**

## Aliases

Lysine Acetyltransferase 2B; P/CAF; P300/CBP-Associated Factor; PCAF; Spermidine Acetyltransferase KAT2B; Histone Acetyltransferase KAT2B; K(Lysine) Acetyltransferase 2B; Histone Acetyltransferase PCAF; Histone Acetylase PCAF; EC 2.3.1.48; GCN5L; GCN5; CREBBP-Associated Factor; EC 2.3.1.57; CAF

## Background

Gene Name: KAT2B

NCBI Gene Entry: [8850](#)

UniProt Entry: [Q92831](#)

## Application Information

Molecular Weight: Predicted, 93 kDa, observed, 93 kDa

Clonality: Rabbit monoclonal antibody

Clone ID: 23GB910

Species Reactivity: Human

Applications Tested: Western blotting (WB), flow cytometry (FCM), immunocytochemistry (IC)

## Immunogen

A synthesized peptide derived from human PCAF

## Isotype

Rabbit IgG

## Storage Buffer

Supplied in PBS (pH 7.4) containing 50% glycerol, and 0.02% sodium azide.

## Storage

Store at -20 °C for one year.

## Recommended Dilutions

Western Blotting (WB): 1:1,000-1:5,000

Flow Cytometry (FCM): 1:2,000

Immunocytochemistry (IC): 1:100-1:1,000

---

### SUPPORT

SUPPORT@GENUINBIOTECH.COM  
TEL: +1-540-855-7041

### ORDERS

SALES@GENUINBIOTECH.COM  
FAX: +1-540-855-7041

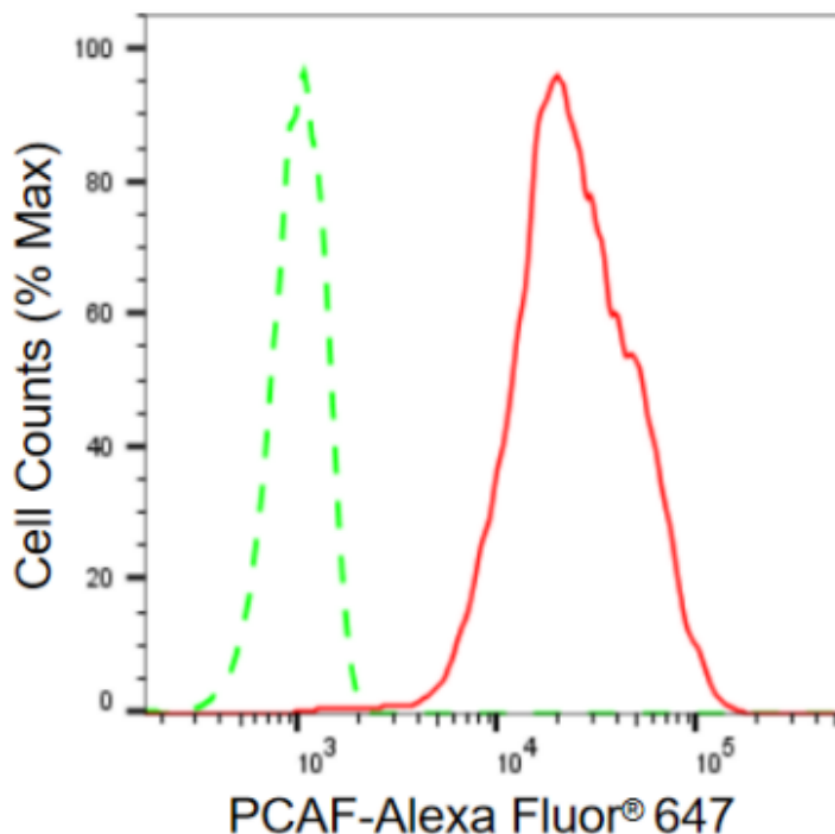
[WWW.GENUINBIOTECH.COM](http://WWW.GENUINBIOTECH.COM)

# KD-Validated Anti-PCAF Recombinant Rabbit Monoclonal Antibody

PAGE 2

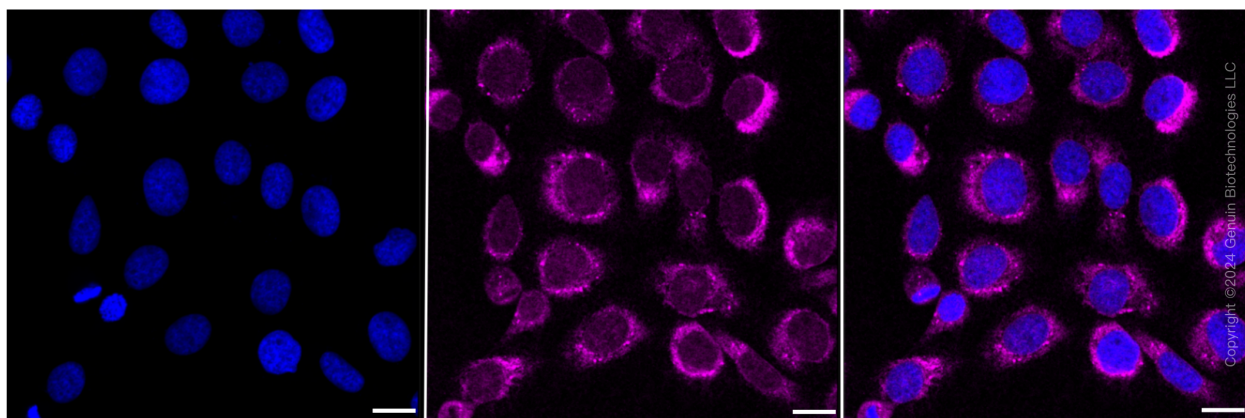
**Note:** This product is for research use only.

## Validation Data



Copyright ©2024 Genuin Biotechnologies LLC

Flow cytometric analysis of PCAF expression in HT-1080 cells using PCAF antibody (Cat#64121, 1:2,000). Green, isotype control; red, PCAF.



Copyright ©2024 Genuin Biotechnologies LLC

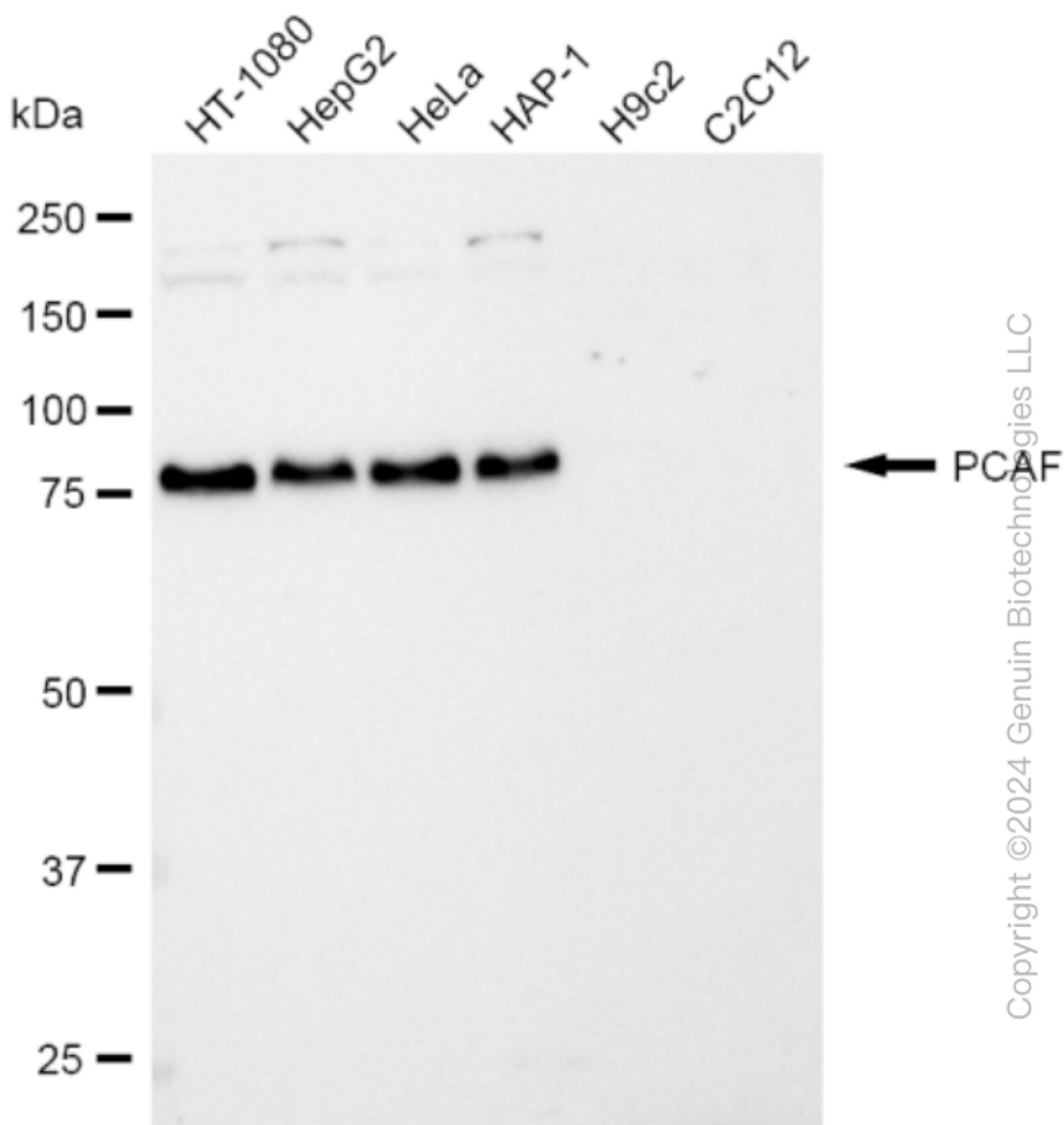
### SUPPORT

SUPPORT@GENUINBIOTECH.COM  
TEL: +1-540-855-7041

### ORDERS

SALES@GENUINBIOTECH.COM  
FAX: +1-540-855-7041

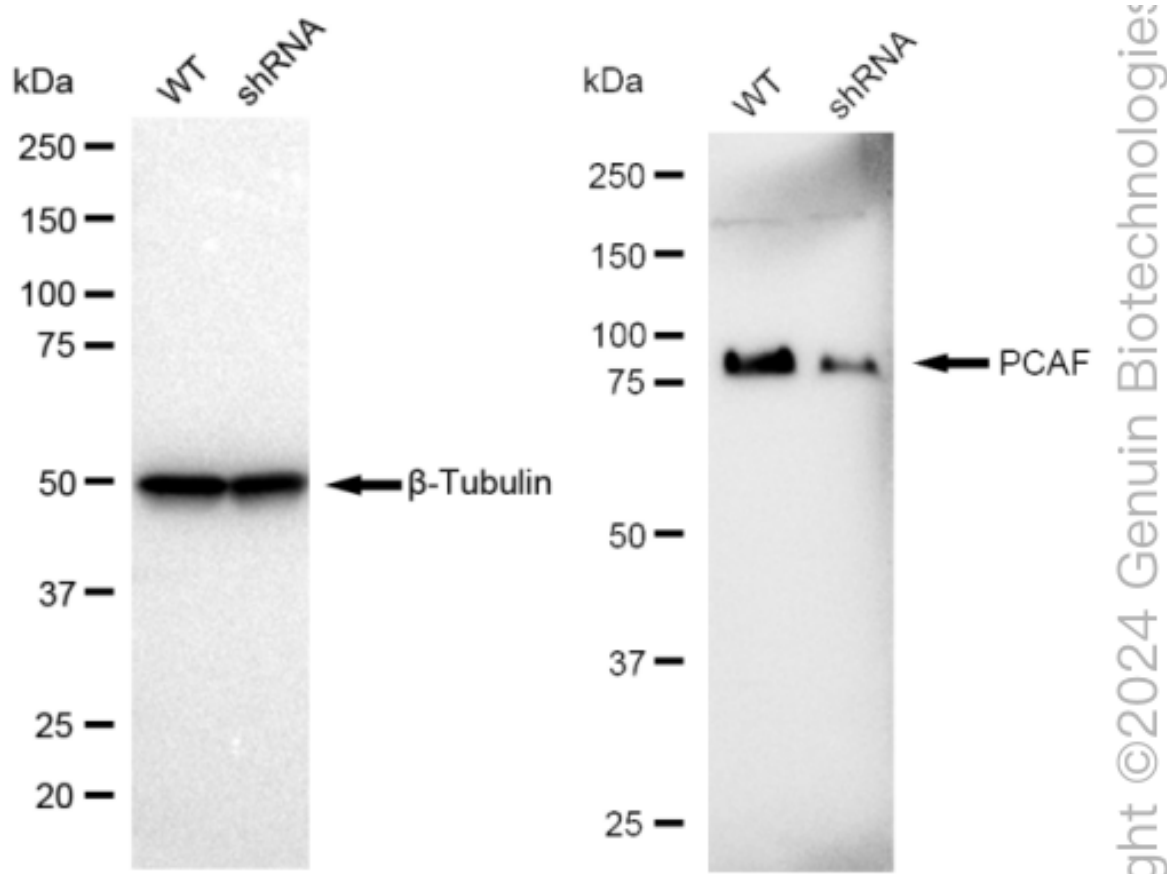
WWW.GENUINBIOTECH.COM



Western blotting analysis using anti-PCAF antibody (Cat#64121). Total cell lysates (30 µg) from various cell lines were loaded and separated by SDS-PAGE. The blot was incubated with anti-PCAF antibody (Cat#64121, 1:5,000) and HRP-conjugated goat anti-rabbit secondary antibody (Cat#201, 1:50,000) respectively. Image was developed using FeQ™ ECL Substrate Kit (Cat#226).

## KD-Validated Anti-PCAF Recombinant Rabbit Monoclonal Antibody

PAGE 4



Western blotting analysis using anti-PCAF antibody (Cat#64121). PCAF expression in wild type (WT) and PCAF shRNA knockdown (KD) HT-1080 cells with 30 µg of total cell lysates. β-Tubulin serves as a loading control. The blot was incubated with anti-PCAF antibody (Cat#64121, 1:5,000) and HRP-conjugated goat anti-rabbit secondary antibody (Cat#201, 1:20,000) respectively. Image was developed using FeQ™ ECL Substrate Kit (Cat#226).

### SUPPORT

SUPPORT@GENUINBIOTECH.COM  
TEL: +1-540-855-7041

### ORDERS

SALES@GENUINBIOTECH.COM  
FAX: +1-540-855-7041

[WWW.GENUINBIOTECH.COM](http://WWW.GENUINBIOTECH.COM)