

KD-Validated Anti-LAMP1 /CD107a Recombinant Rabbit Monoclonal Antibody



Catalog #: 64151

Aliases

CD107a; Lysosome-Associated Membrane Glycoprotein 1; Lysosome-Associated Membrane Protein 1; CD107 Antigen-Like Family Member A; LAMP-1; Lysosomal-Associated Membrane Protein 1; CD107a Antigen; LGP120; LAMPA

Background

Gene Name: LAMP1

NCBI Gene Entry: [3916](#)

UniProt Entry: [P11279](#)

Application Information

Molecular Weight: Predicted, 45 kDa, observed, 120 kDa

Clonality: Rabbit monoclonal antibody

Clone ID: 23GB760

Species Reactivity: Human

Applications Tested: Western blotting (WB), immunocytochemistry (IC)

Immunogen

A synthesized peptide derived from human LAMP1

Isotype

Rabbit IgG

Storage Buffer

Supplied in PBS (pH 7.4) containing 50% glycerol, and 0.02% sodium azide.

Storage

Store at -20 °C for one year.

Recommended Dilutions

Western Blotting (WB): 1:1,000-1:5,000

Immunocytochemistry (IC): 1:100-1:1,000

Note: This product is for research use only.

Validation Data

SUPPORT

SUPPORT@GENUINBIOTECH.COM
TEL: +1-540-855-7041

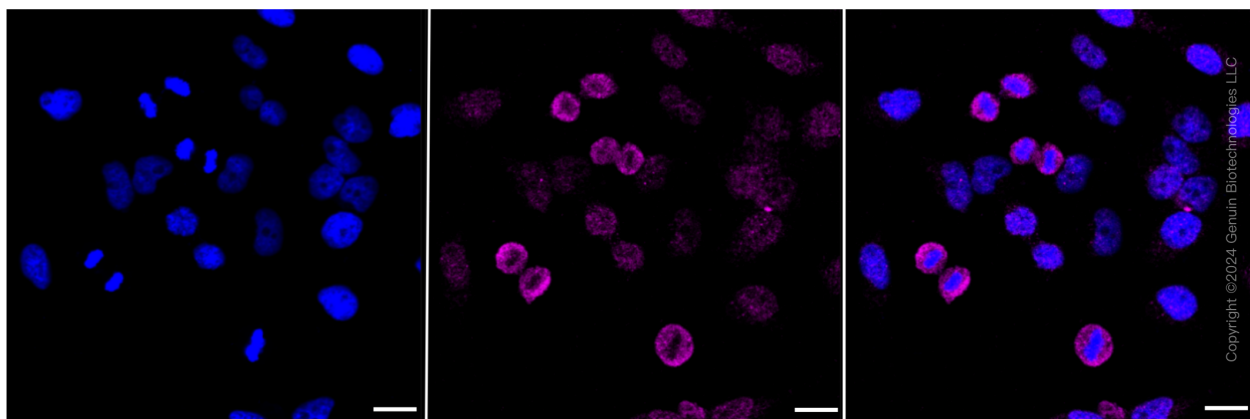
ORDERS

SALES@GENUINBIOTECH.COM
FAX: +1-540-855-7041

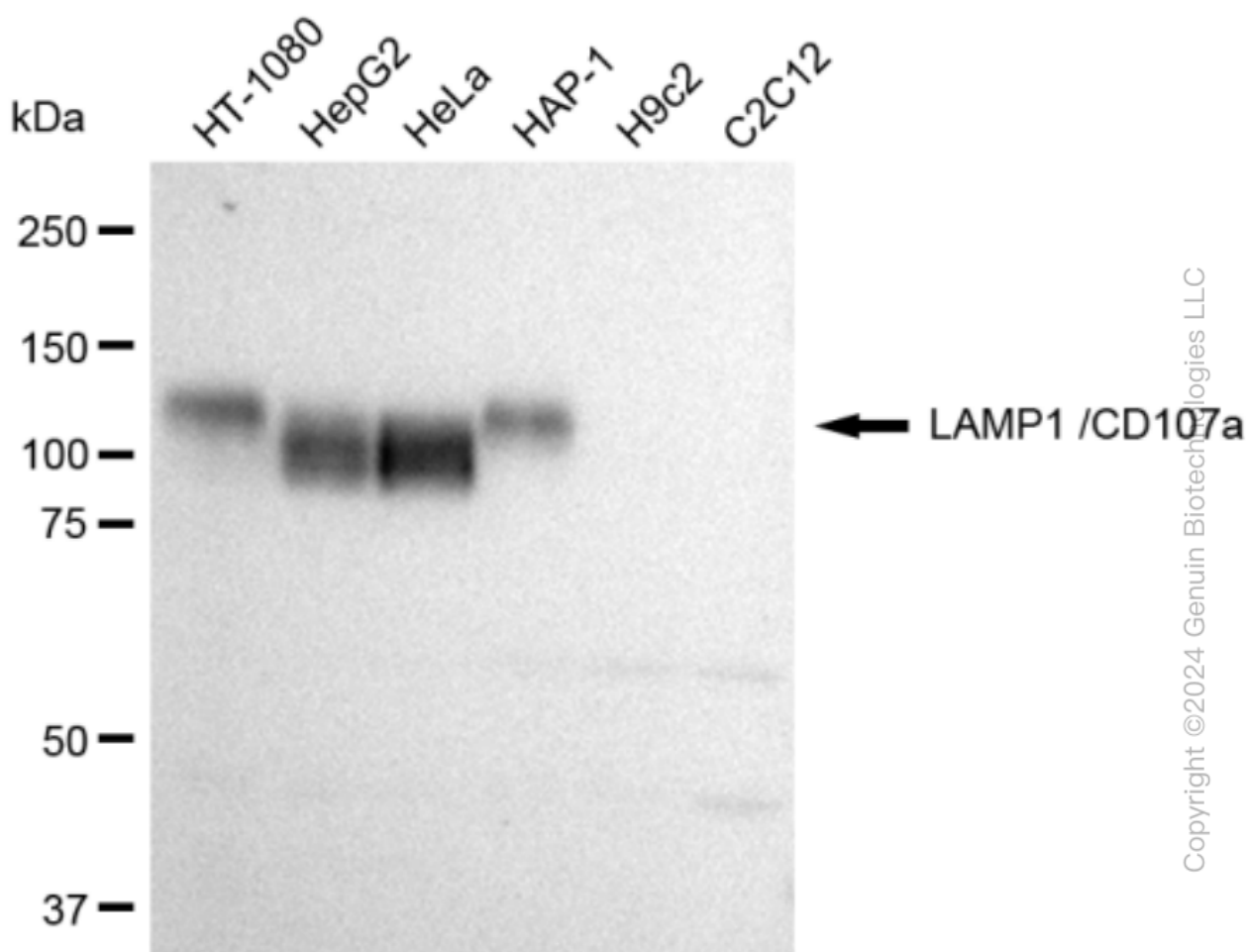
WWW.GENUINBIOTECH.COM

KD-Validated Anti-LAMP1 /CD107a Recombinant Rabbit Monoclonal Antibody

PAGE 2



Immunocytochemical staining of HeLa cells with LAMP1 /CD107a antibody (Cat#64151, 1:1,000). Nuclei were stained blue with DAPI; LAMP1 /CD107a was stained magenta with Alexa Fluor® 647. Images were taken using Leica stellaris 5. Protein abundance based on laser Intensity and smart gain: Low. Scale bar: 20 μ m.



Western blotting analysis using anti-LAMP1 /CD107a antibody (Cat#64151). Total cell lysates (30 μ g) from various cell lines were loaded and separated by SDS-PAGE. The blot was incubated with

SUPPORT

SUPPORT@GENUINBIOTECH.COM
TEL: +1-540-855-7041

ORDERS

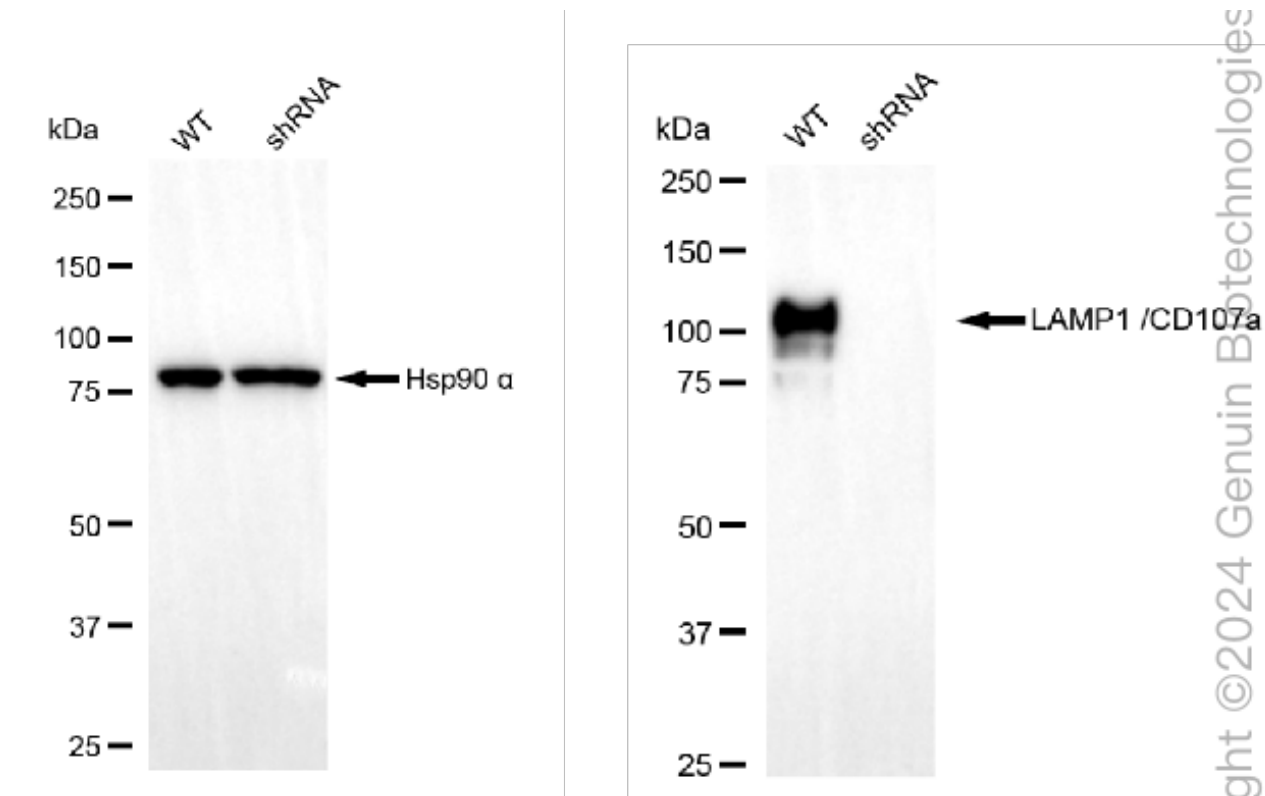
SALES@GENUINBIOTECH.COM
FAX: +1-540-855-7041

WWW.GENUINBIOTECH.COM

KD-Validated Anti-LAMP1 /CD107a Recombinant Rabbit Monoclonal Antibody

PAGE 3

anti-LAMP1 /CD107a antibody (Cat#64151, 1:5,000) and HRP-conjugated goat anti-rabbit secondary antibody (Cat#201, 1:20,000) respectively. Image was developed using FeQ™ ECL Substrate Kit (Cat#226).



Western blotting analysis using anti-LAMP1 /CD107a antibody (Cat#64151). LAMP1 /CD107a expression in wild type (WT) and LAMP1 /CD107a shRNA knockdown (KD) HT-1080 cells with 30 µg of total cell lysates. GAPDH serves as a loading control. The blot was incubated with anti-LAMP1 /CD107a antibody (Cat#64151, 1:5,000) and HRP-conjugated goat anti-rabbit secondary antibody (Cat#201, 1:50,000) respectively. Image was developed using FeQ™ ECL Substrate Kit (Cat#226).

SUPPORT

SUPPORT@GENUINBIOTECH.COM
TEL: +1-540-855-7041

ORDERS

SALES@GENUINBIOTECH.COM
FAX: +1-540-855-7041

WWW.GENUINBIOTECH.COM