

KD-Validated Anti-Erb-b2 receptor tyrosine kinase 2 Recombinant Rabbit Monoclonal



Catalog #: 64611

Aliases

Erb-B2 Receptor Tyrosine Kinase 2; HER2; NEU; C-ERB-2; C-ERB2; MLN-19; HER-2; CD340; NGL; V-Erb-B2 Avian Erythroblastic Leukemia Viral Oncogene Homolog 2; Tyrosine Kinase-Type Cell Surface Receptor HER2; Neuro/Glioblastoma Derived Oncogene Homolog; Human Epidermal Growth Factor Receptor 2; Receptor Tyrosine-Protein Kinase ErbB-2; Metastatic Lymph Node Gene 19 Protein; Proto-Oncogene C-ErbB-2; Proto-Oncogene Neu; P185(ErbB2); EC 2.7.10.1; MLN 19; V-Erb-B2 Avian Erythroblastic Leukemia Viral Oncogene Homolog 2 (Neuro/Glioblastoma Derived Oncogene Homolog); V-Erb-B2 Erythroblastic Leukemia Viral Oncogene Homolog 2, Neuro/Glioblastoma Derived Oncogene Homolog 3V-Erb-B2 Avian Erythroblastic Leukemia Viral Oncoprotein; Neuroblastoma/Glioblastoma Derived Oncogene Homolog; Metastatic Lymph Node Gene 19; C-Erb B2/Neu Protein; CD340 Antigen; P185(ERBB2); HER-2/Neu; Herstatin; P185erbB2; EC 2.7.10; VSCN2; MLN19; TKR1

Background

Gene Name: ERBB2

NCBI Gene Entry: [2064](#)

UniProt Entry: [P04626](#)

Application Information

Molecular Weight: Predicted, 138 kDa, observed, 185 kDa

Clonality: Rabbit monoclonal antibody

Clone ID: 23GB1350

Species Reactivity: Human, mouse, rat

Applications Tested: Western blotting (WB), immunocytochemistry (IC)

Immunogen

A synthesized peptide derived from human ErbB2 (HER2)

Isotype

Rabbit IgG

Storage Buffer

Supplied in PBS (pH 7.4) containing 50% glycerol, and 0.02% sodium azide.

Storage

Store at -20 °C for one year.

SUPPORT

SUPPORT@GENUINBIOTECH.COM
TEL: +1-540-855-7041

ORDERS

SALES@GENUINBIOTECH.COM
FAX: +1-540-855-7041

WWW.GENUINBIOTECH.COM

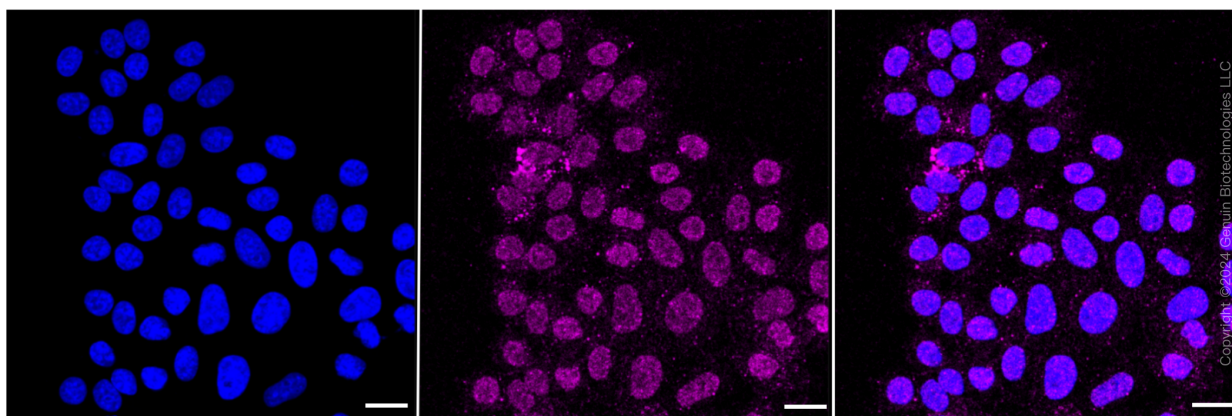
Recommended Dilutions

Western Blotting (WB): 1:1,000-1:5,000

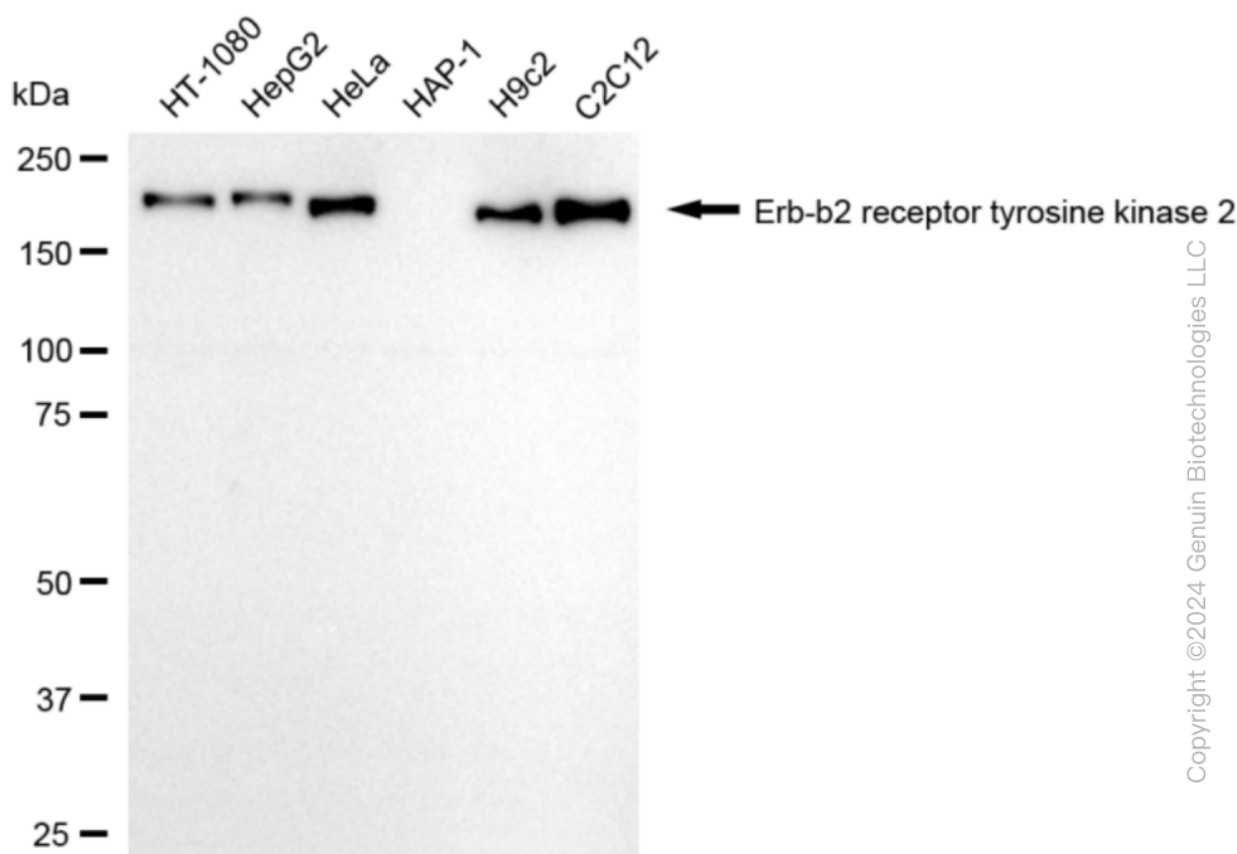
Immunocytochemistry (IC): 1:100-1:1,000

Note: This product is for research use only.

Validation Data

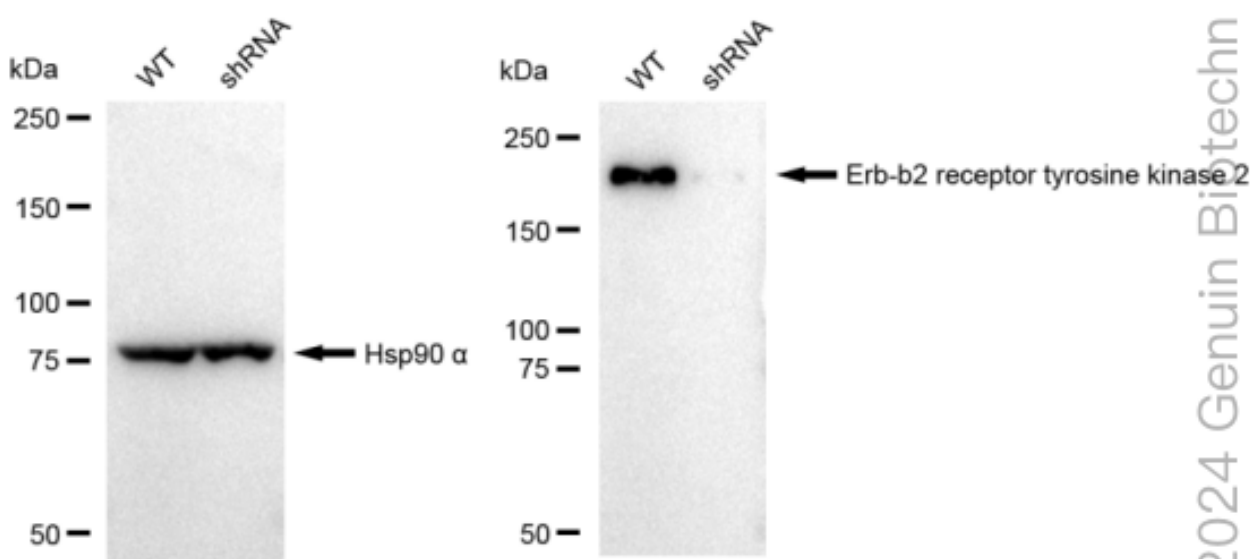


Immunocytochemical staining of HepG2 cells with Erb-b2 receptor tyrosine kinase 2 antibody (Cat#64611, 1:1,000). Nuclei were stained blue with DAPI; Erb-b2 receptor tyrosine kinase 2 was stained magenta with Alexa Fluor® 647. Images were taken using Leica stellaris 5. Protein abundance based on laser Intensity and smart gain: Very low. Scale bar: 20 µm.



Copyright ©2024 Genuin Biotechnologies LLC

Western blotting analysis using anti-Erb-b2 receptor tyrosine kinase 2 antibody (Cat#64611). Total cell lysates (30 µg) from various cell lines were loaded and separated by SDS-PAGE. The blot was incubated with anti-Erb-b2 receptor tyrosine kinase 2 antibody (Cat#64611, 1:5,000) and HRP-conjugated goat anti-rabbit secondary antibody (Cat#201, 1:20,000) respectively. Image was developed using FeQ™ ECL Substrate Kit (Cat#226).



2024 Genuin Biotechn

Western blotting analysis using anti-Erb-b2 receptor tyrosine kinase 2 antibody (Cat#64611). Erb-

SUPPORT

SUPPORT@GENUINBIOTECH.COM
TEL: +1-540-855-7041

ORDERS

SALES@GENUINBIOTECH.COM
FAX: +1-540-855-7041

WWW.GENUINBIOTECH.COM

KD-Validated Anti-Erb-b2 receptor tyrosine kinase 2 Recombinant Rabbit Monoclonal

PAGE 4

b2 receptor tyrosine kinase 2 expression in wild type (WT) and erb-b2 receptor tyrosine kinase 2 shRNA knockdown (KD) 293T cells with 30 µg of total cell lysates. Hsp90 α serves as a loading control. The blot was incubated with anti-Erb-b2 receptor tyrosine kinase 2 antibody (Cat#64611, 1:5,000) and HRP-conjugated goat anti-rabbit secondary antibody (Cat#201, 1:20,000) respectively. Image was developed using FeQ™ ECL Substrate Kit (Cat#226).

SUPPORT

SUPPORT@GENUINBIOTECH.COM
TEL: +1-540-855-7041

ORDERS

SALES@GENUINBIOTECH.COM
FAX: +1-540-855-7041

WWW.GENUINBIOTECH.COM