

# KD-Validated Anti-GBE1 Mouse Monoclonal Antibody



**Catalog #: 64802**

## Aliases

GBE1; 1,4-Alpha-Glucan Branching Enzyme 1; Glucan (1,4-Alpha-), Branching Enzyme 1; 1,4-Alpha-Glucan-Branching Enzyme; Glycogen Branching Enzyme; Brancher Enzyme; EC 2.4.1.18; Amylo-(1,4 To 1,6) Transglucosidase; Amylo-(1,4 To 1,6) Transglycosylase; Glycogen Storage Disease Type IV; Glycogen-Branching Enzyme; Andersen Disease; APBD; GSD4; GBE

## Background

Gene Name: GBE1

NCBI Gene Entry: [2632](#)

UniProt Entry: [Q04446](#)

## Application Information

Molecular Weight: Predicted, 80 kDa; observed, 70 kDa

Clonality: Mouse monoclonal antibody

Clone ID: 24GB13015

Species Reactivity: Human

Applications Tested: Western blotting (WB), flow cytometry (FCM), immunocytochemistry (IC)

## Immunogen

Recombinant protein of human GBE1

## Isotype

Mouse IgG1

## Storage Buffer

Supplied in PBS (pH 7.4) containing 50% glycerol, and 0.02% sodium azide.

## Storage

Store at -20 °C for one year.

## Recommended Dilutions

Western Blotting (WB): 1:500-1:2,500

Flow Cytometry (FCM): 1:2,000

Immunocytochemistry (IC): 1:100-1:1,000

---

### SUPPORT

SUPPORT@GENUINBIOTECH.COM  
TEL: +1-540-855-7041

### ORDERS

SALES@GENUINBIOTECH.COM  
FAX: +1-540-855-7041

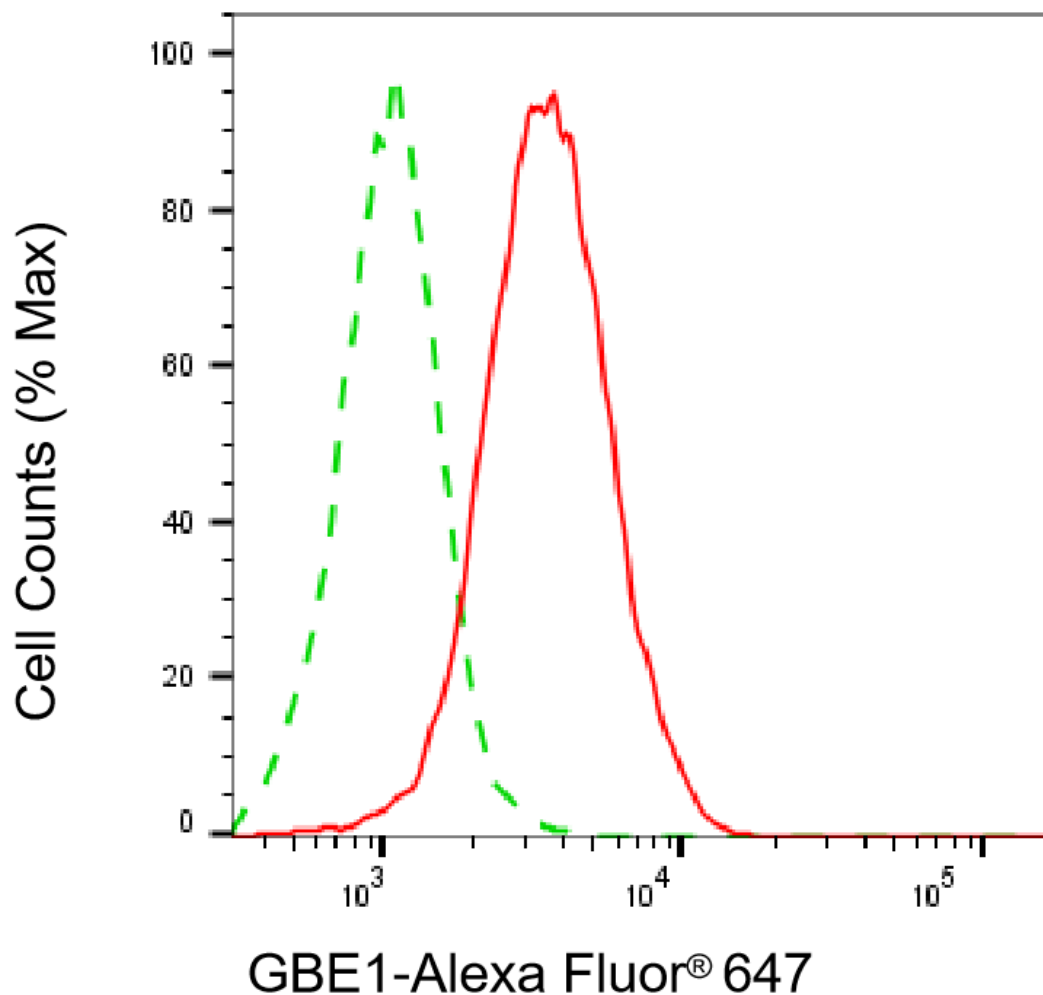
[WWW.GENUINBIOTECH.COM](http://WWW.GENUINBIOTECH.COM)

## KD-Validated Anti-GBE1 Mouse Monoclonal Antibody

PAGE 2

**Note:** This product is for research use only.

### Validation Data



Copyright ©2025 Genuin Biotechnologies LLC

Flow cytometric analysis of GBE1 expression in HepG2 cells using anti-GBE1 antibody (Cat#64802, 1:1,000). Green, isotype control; red, GBE1.

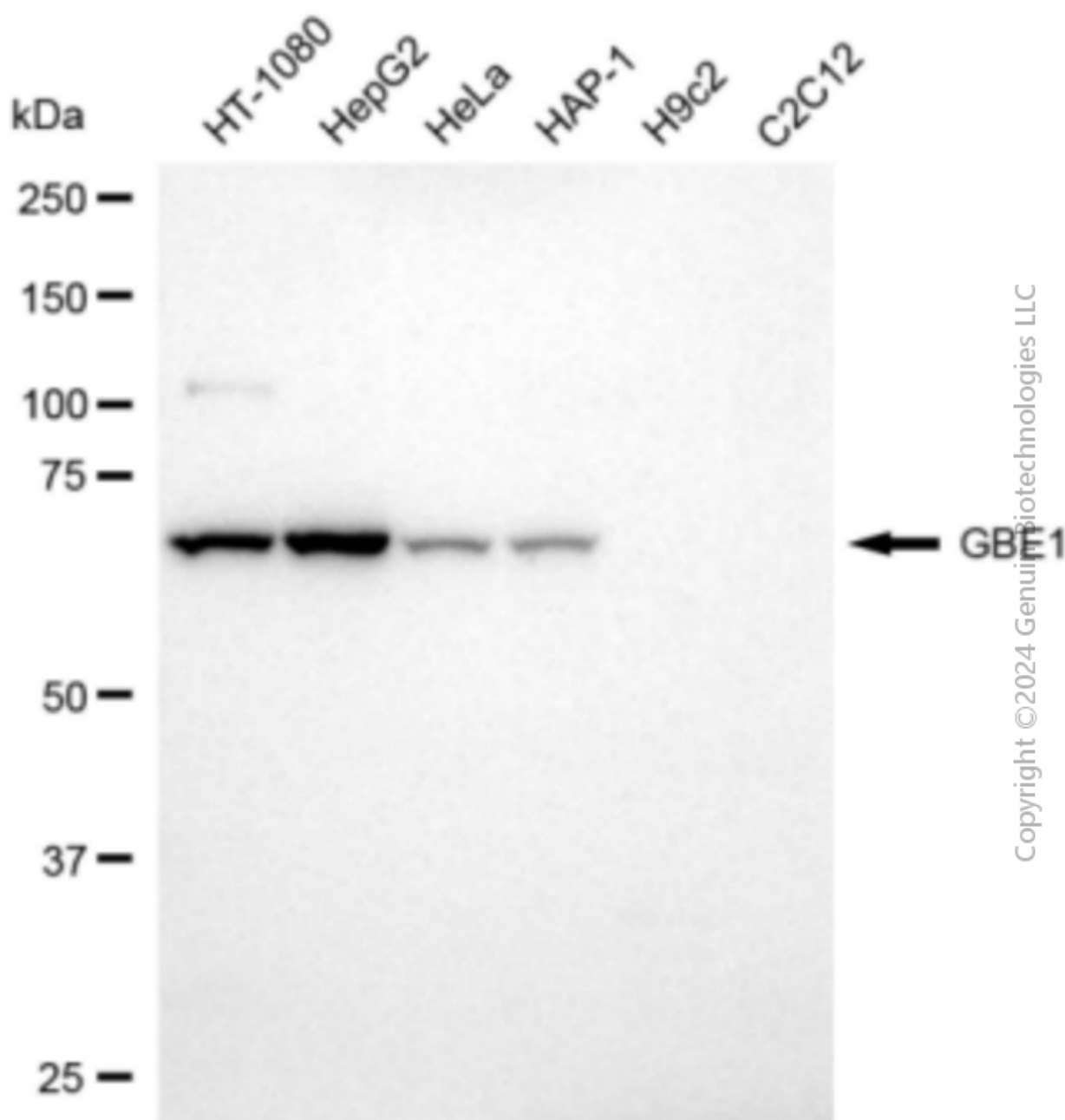
#### SUPPORT

SUPPORT@GENUINBIOTECH.COM  
TEL: +1-540-855-7041

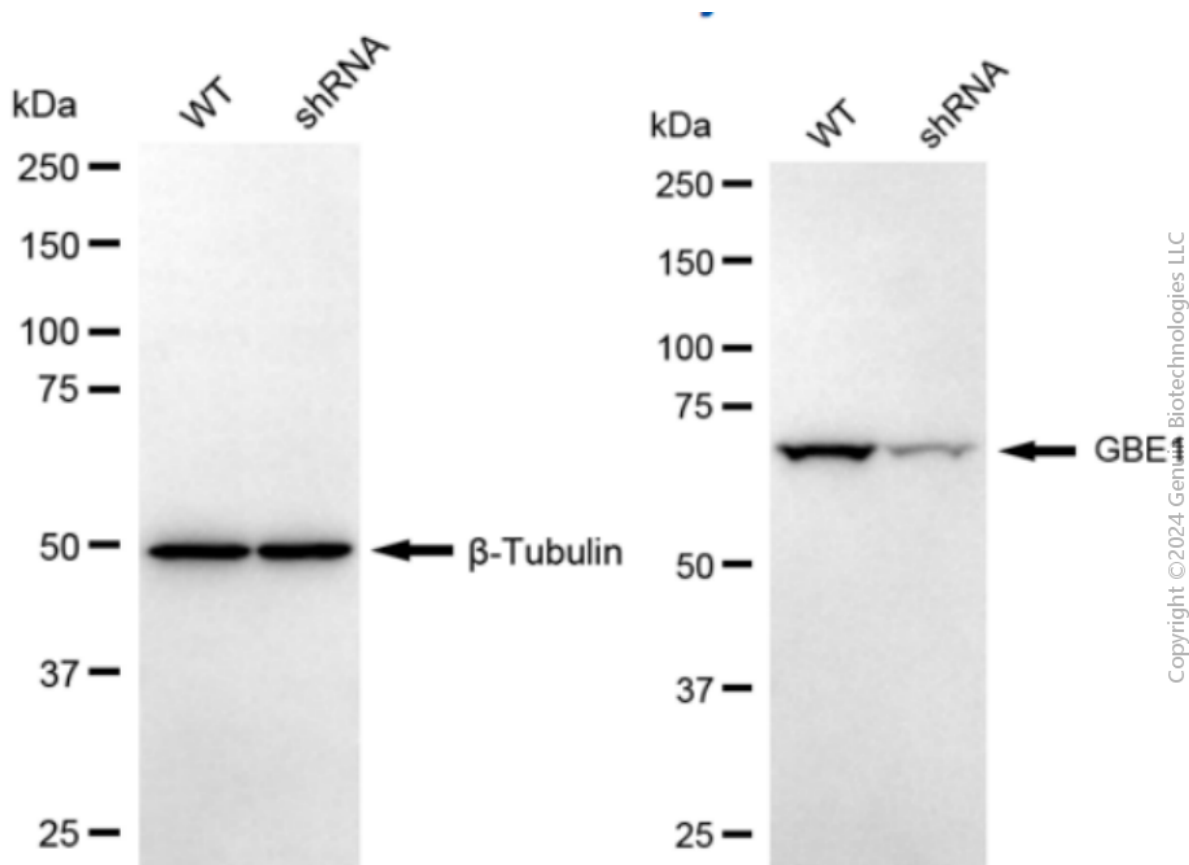
#### ORDERS

SALES@GENUINBIOTECH.COM  
FAX: +1-540-855-7041

[WWW.GENUINBIOTECH.COM](http://WWW.GENUINBIOTECH.COM)



Western blotting analysis using anti-GBE1 antibody (Cat#64802). Total cell lysates (30 µg) from various cell lines were loaded and separated by SDS-PAGE. The blot was incubated with anti-GBE1 antibody (Cat#64802, 1:2,500) and HRP-conjugated goat anti-mouse secondary antibody (Cat#101, 1:20,000) respectively. Image was developed using FeQ™ ECL Substrate Kit (Cat#226).



Western blotting analysis using anti-GBE1 antibody (Cat#64802). GBE1 expression in wild-type (WT) and GBE1 shRNA knockdown (KD) HeLa cells with 20  $\mu$ g of total cell lysates.  $\beta$ -Tubulin serves as a loading control. The blot was incubated with anti-GBE1 antibody (Cat#64802, 1:2,500) and HRP-conjugated goat anti-mouse secondary antibody (Cat#101, 1:20,000) respectively. Image was developed using FeQ™ ECL Substrate Kit (Cat#226).