

KD-Validated Anti-HIBCH Mouse Monoclonal Antibody



Catalog #: 64807

Aliases

HIBCH; 3-Hydroxyisobutyryl-CoA Hydrolase; 3-Hydroxyisobutyryl-Coenzyme A Hydrolase; 3-Hydroxyisobutyryl-CoA Hydrolase, Mitochondrial; HIB-CoA Hydrolase; HIBYL-CoA-H; EC 3.1.2.4; Testicular Tissue Protein Li 86; HIBYLCOAH

Background

Gene Name: HIBCH

NCBI Gene Entry: [26275](#)

UniProt Entry: [Q6NVY1](#)

Application Information

Molecular Weight: Predicted, 43 kDa; observed, 38 kDa

Clonality: Mouse monoclonal antibody

Clone ID: 24GB13040

Species Reactivity: Human, mouse

Applications Tested: Western blotting (WB), flow cytometry (FCM), immunocytochemistry (IC)

Immunogen

Recombinant protein of human HIBCH

Isotype

Mouse IgG1

Storage Buffer

Supplied in PBS (pH 7.4) containing 50% glycerol, and 0.02% sodium azide.

Storage

Store at -20 °C for one year.

Recommended Dilutions

Western Blotting (WB): 1:200-1:1,000

Flow Cytometry (FCM): 1:2,000

Immunocytochemistry (IC): 1:100-1:1,000

Note: This product is for research use only.

SUPPORT

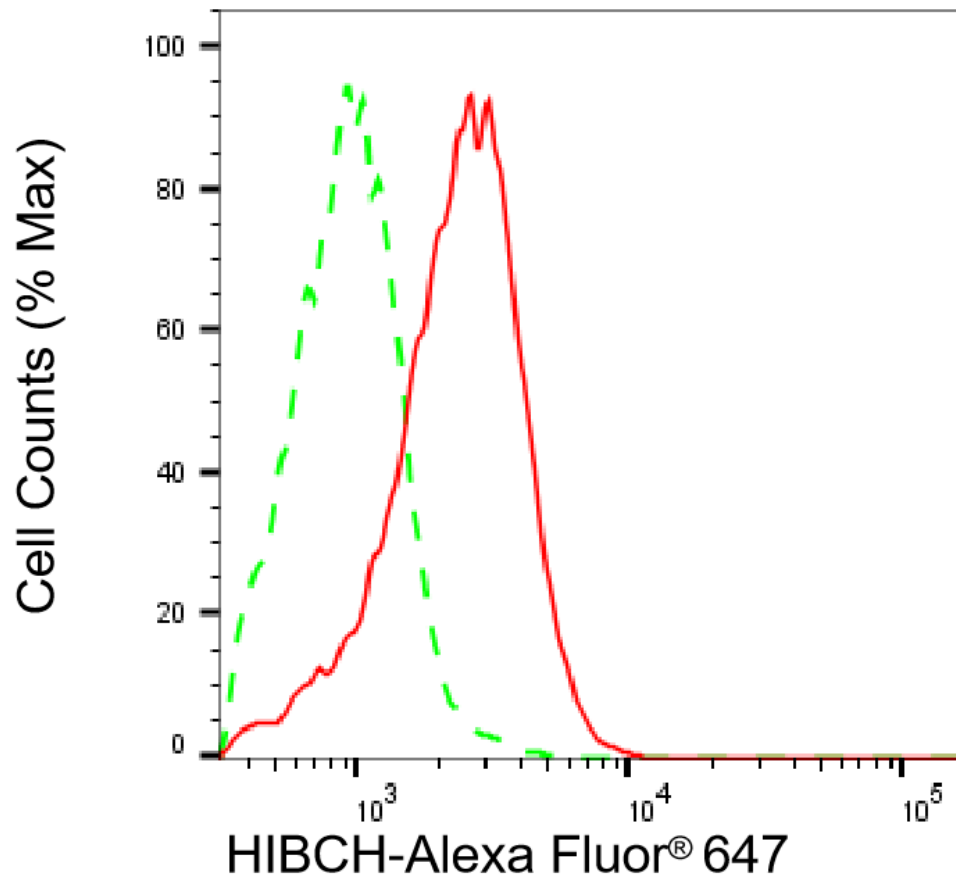
SUPPORT@GENUINBIOTECH.COM
TEL: +1-540-855-7041

ORDERS

SALES@GENUINBIOTECH.COM
FAX: +1-540-855-7041

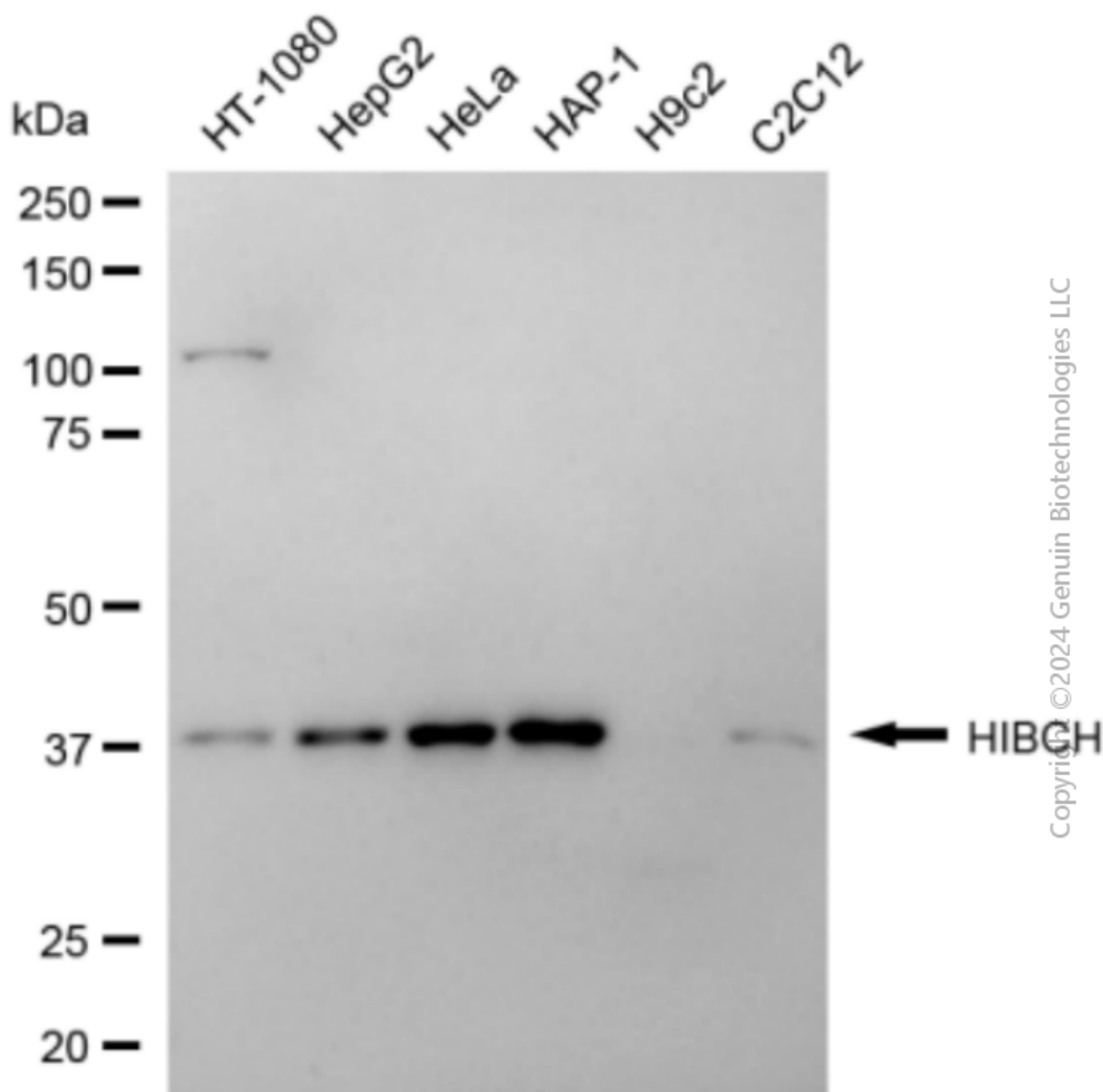
WWW.GENUINBIOTECH.COM

Validation Data

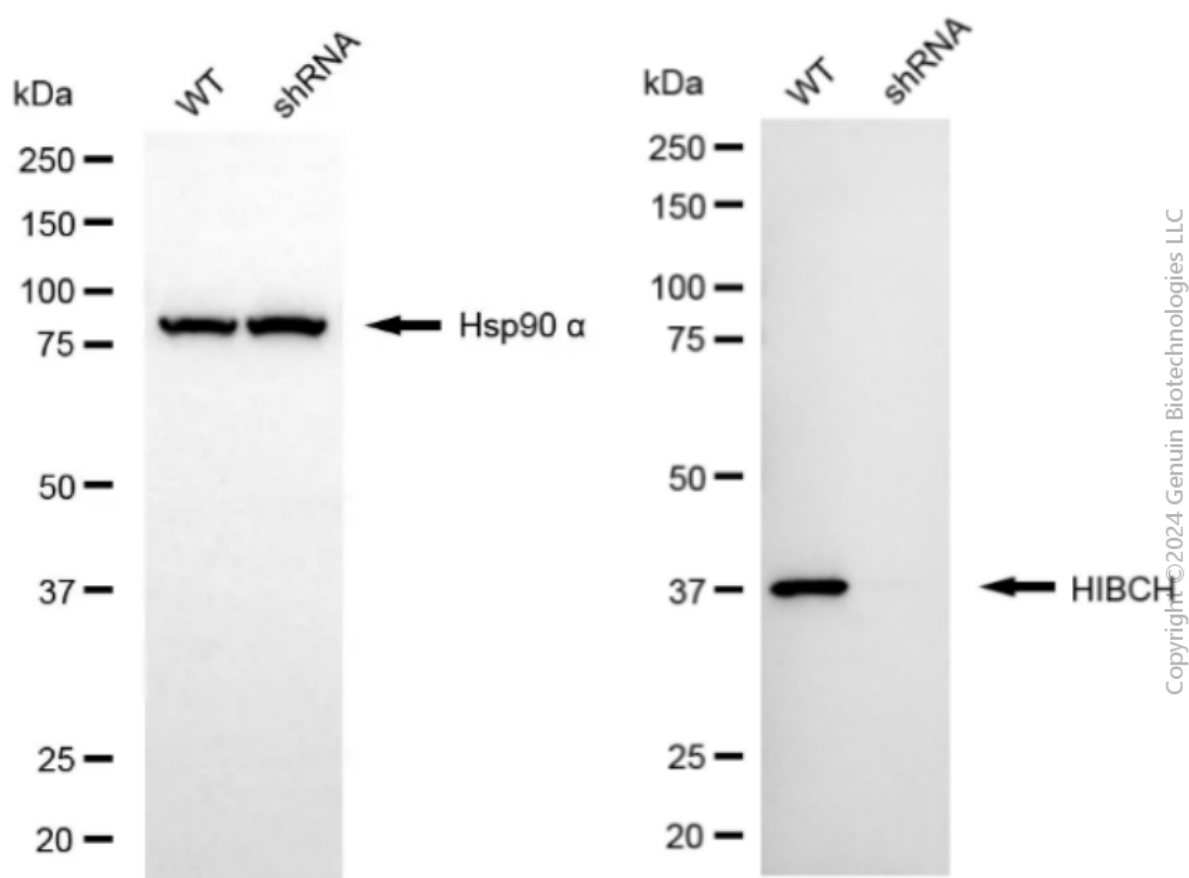


Copyright ©2025 Genuin Biotechnologies LLC

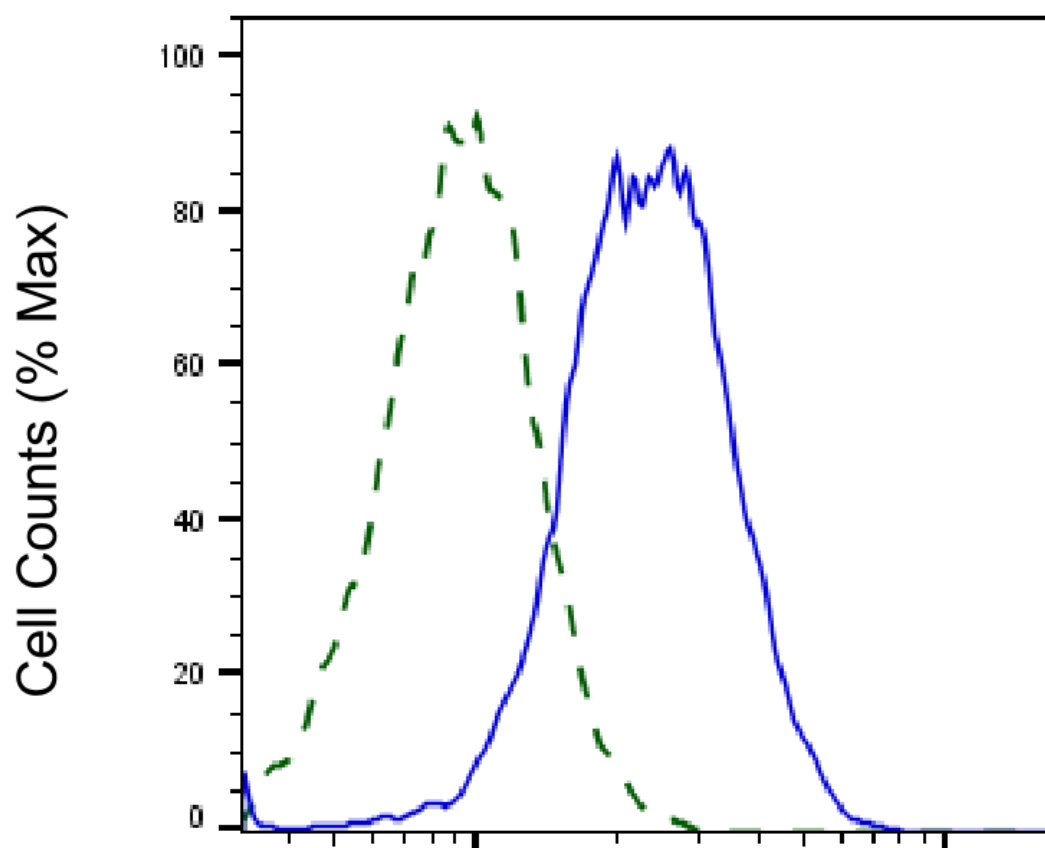
Flow cytometric analysis of ILF2 expression in HAP-1 cells using anti-ILF2 antibody (1:2000). Green, isotype control; red, ILF2.



Western blotting analysis using anti-HIBCH antibody (Cat#64807). Total cell lysates (30 µg) from various cell lines were loaded and separated by SDS-PAGE. The blot was incubated with anti-HIBCH antibody (Cat#64807, 1:1,000) and HRP-conjugated goat anti-mouse secondary antibody (Cat#101, 1:20,000) respectively. Image was developed using FeQ™ ECL Substrate Kit (Cat#226).



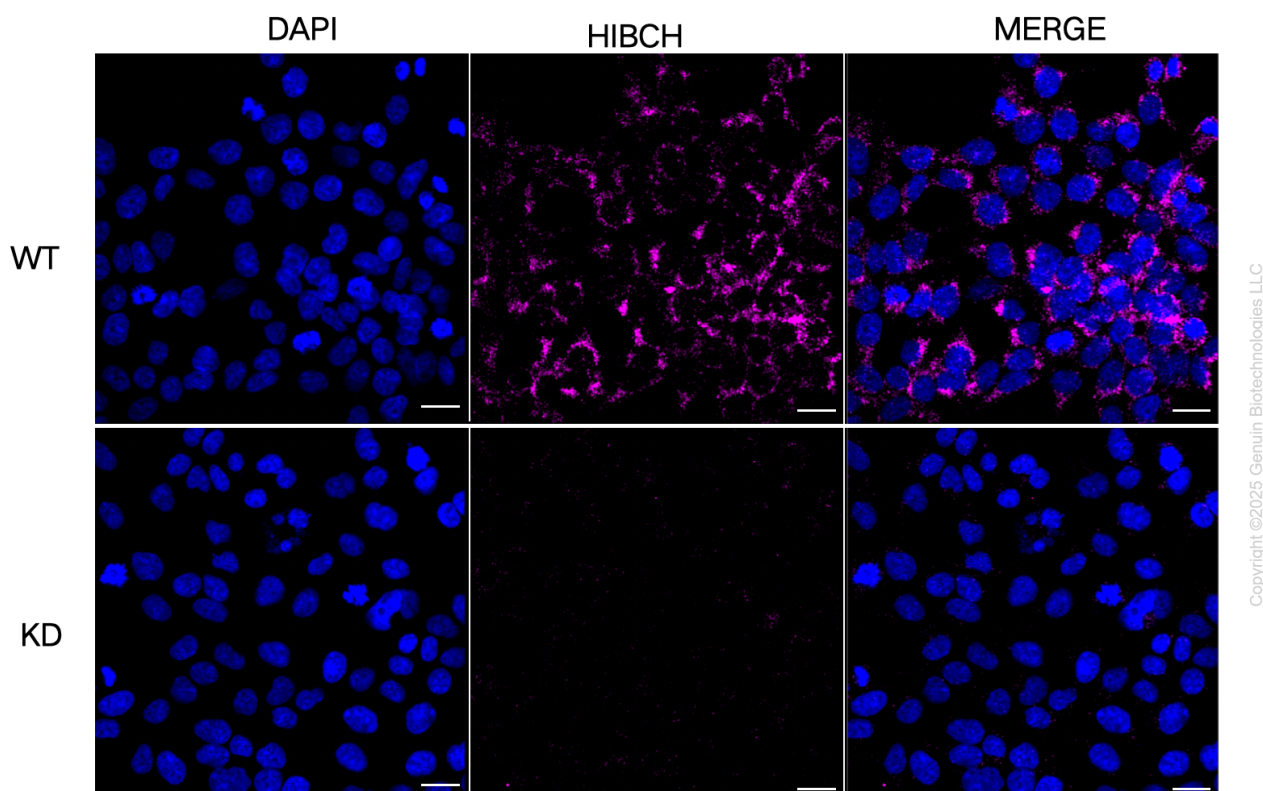
Western blotting analysis using anti-HIBCH antibody (Cat#64807). HIBCH expression in wild-type (WT) and HIBCH shRNA knockdown (KD) HeLa cells with 20 μ g of total cell lysates. Hsp90 α serves as a loading control. The blot was incubated with anti-HIBCH antibody (Cat#64807, 1:1,000) and HRP-conjugated goat anti-mouse secondary antibody (Cat#101, 1:20,000) respectively. Image was developed using FeQ™ ECL Substrate Kit (Cat#226).



Copyright ©2025 Genuin Biotechnologies LLC

HIBCH-Alexa Fluor® 647

Validation of HIBCH knockdown using flow cytometry. Wild-type(WT, Blue) and knockdown(KD, Green) HeLa cells were stained with anti-HIBCH antibody (Cat#64807, 1:2,000) and analyzed using BD flow cytometer.



Immunocytochemical staining of HeLa cells using anti-HIBCH antibody (Cat#64807, 1:1,000), Top panel: wild-type (WT); Bottom panel: HIBCH shRNA knockdown (KD). Nuclei were stained blue with DAPI; Acyl-CoA dehydrogenase short chain was stained magenta with Alexa Fluor® 647. Scale bar, 20 μ m.