

KD-Validated Anti-GALE Mouse Monoclonal Antibody



Catalog #: 64809

Aliases

GALE; UDP-Galactose-4-Epimerase; UDP-Glucose 4-Epimerase; SDR1E1; Short Chain Dehydrogenase/Reductase Family 1E, Member 1; UDP-N-Acetylgalactosamine 4-Epimerase; UDP-N-Acetylglucosamine 4-Epimerase; Galactose-4-Epimerase, UDP-; UDP-GalNAc 4-Epimerase; UDP-GlcNAc 4-Epimerase; Galactowaldenase; EC 5.1.3.2; Epididymis Secretory Sperm Binding Protein; UDP Galactose-4'-Epimerase; UDP-Galactose 4-Epimerase; EC 5.1.3.7; EC 5.1.3.47; THC13

Background

Gene Name: GALE

NCBI Gene Entry: [2582](#)

UniProt Entry: [Q14376](#)

Application Information

Molecular Weight: Predicted, 38 kDa; observed, 34 kDa

Clonality: Mouse monoclonal antibody

Clone ID: 24GB13050

Species Reactivity: Human, mouse, rat

Applications Tested: Western blotting (WB), flow cytometry (FCM), immunocytochemistry (IC)

Immunogen

Recombinant protein of human GALE

Isotype

Mouse IgG1

Storage Buffer

Supplied in PBS (pH 7.4) containing 50% glycerol, and 0.02% sodium azide.

Storage

Store at -20 °C for one year.

Recommended Dilutions

Western Blotting (WB): 1:500-1:2,500

Flow Cytometry (FCM): 1:2,000

Immunocytochemistry (IC): 1:100-1:1,000

SUPPORT

SUPPORT@GENUINBIOTECH.COM
TEL: +1-540-855-7041

ORDERS

SALES@GENUINBIOTECH.COM
FAX: +1-540-855-7041

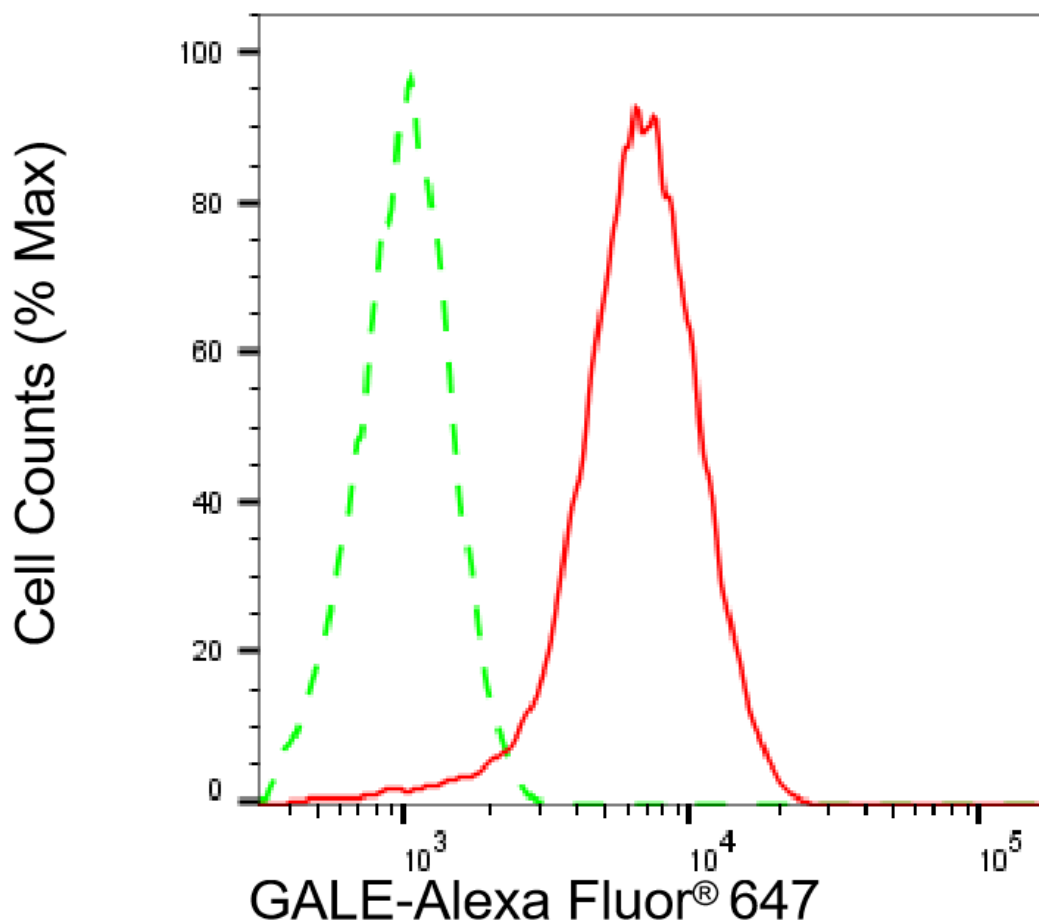
WWW.GENUINBIOTECH.COM

KD-Validated Anti-GALE Mouse Monoclonal Antibody

PAGE 2

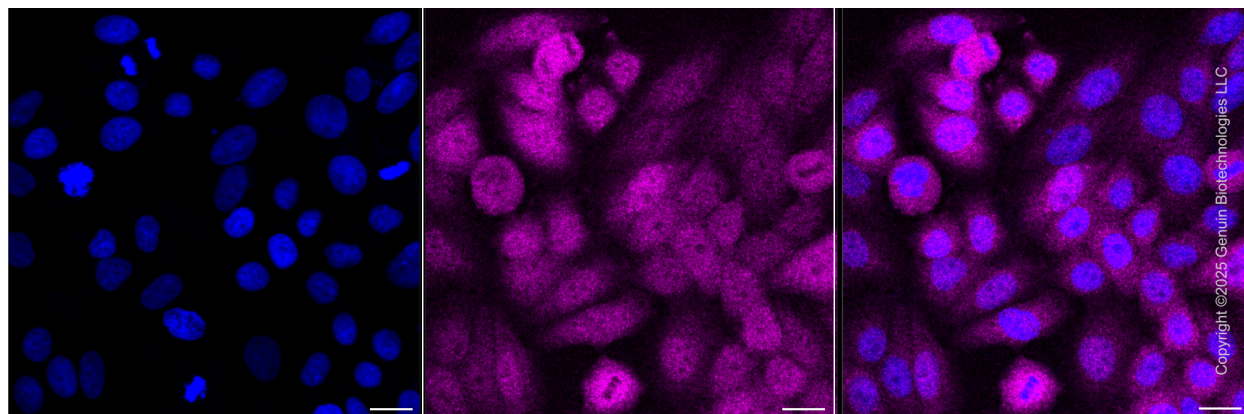
Note: This product is for research use only.

Validation Data



Copyright ©2025 Genuin Biotechnologies LLC

Flow cytometric analysis of GALE expression in HepG2 cells using anti-GALE antibody (Cat#64809, 1:2,000). Green, isotype control; red, GALE.



Copyright ©2025 Genuin Biotechnologies LLC

SUPPORT

SUPPORT@GENUINBIOTECH.COM
TEL: +1-540-855-7041

ORDERS

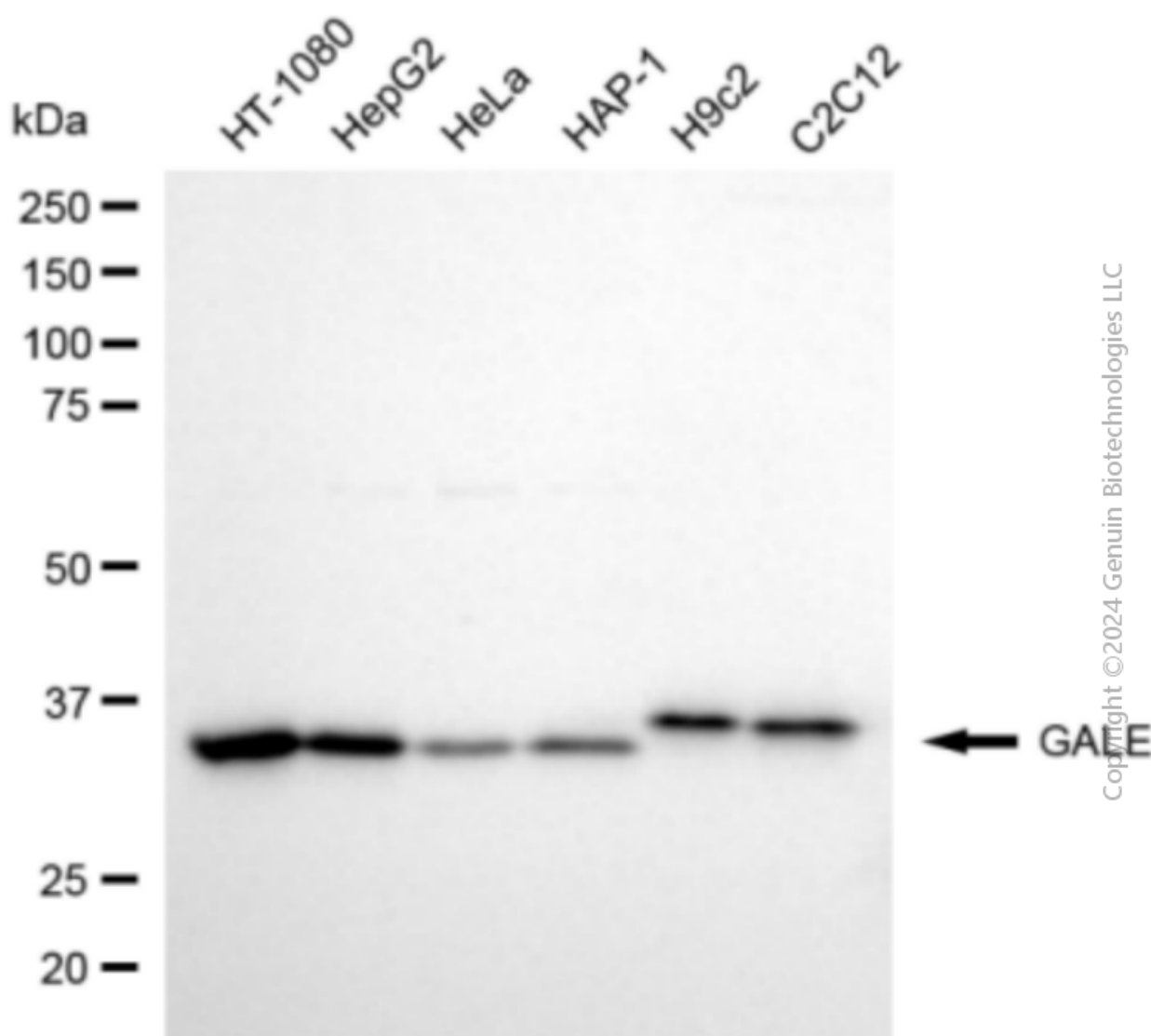
SALES@GENUINBIOTECH.COM
FAX: +1-540-855-7041

WWW.GENUINBIOTECH.COM

KD-Validated Anti-GALE Mouse Monoclonal Antibody

PAGE 3

Immunocytochemical staining of HepG2 cells with anti- associated protein antibody (Cat#64809, 1:1,000) . Nuclei were stained blue with DAPI; associated protein was stained magenta with Alexa Fluor® 647. Images were taken using Leica stellaris 5. Protein abundance based on laser Intensity and smart gain: Medium. Scale bar, 20 μ m.



Western blotting analysis using anti-GALE antibody (Cat#64809). Total cell lysates (30 μ g) from various cell lines were loaded and separated by SDS-PAGE. The blot was incubated with anti-GALE antibody (Cat#64809, 1:2,500) and HRP-conjugated goat anti-mouse secondary antibody (Cat#101, 1:20,000) respectively. Image was developed using NaQ™ ECL Substrate Kit (Cat#716).

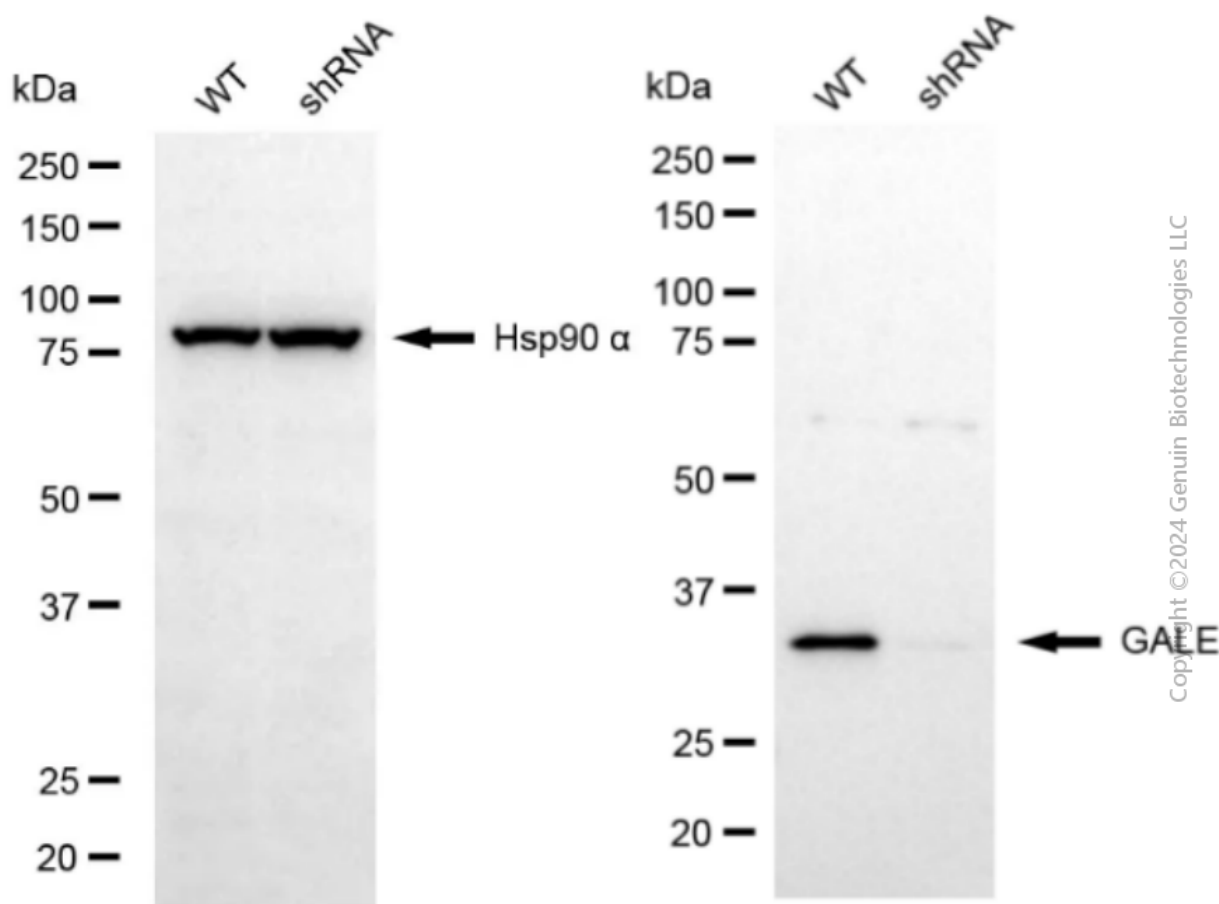
SUPPORT

SUPPORT@GENUINBIOTECH.COM
TEL: +1-540-855-7041

ORDERS

SALES@GENUINBIOTECH.COM
FAX: +1-540-855-7041

WWW.GENUINBIOTECH.COM



Western blotting analysis using anti-GALE antibody (Cat#64809). GALE expression in wild-type (WT) and GALE shRNA knockdown (KD) HeLa cells with 20 µg of total cell lysates. Hsp90 α serves as a loading control. The blot was incubated with anti-GALE antibody (Cat#64809, 1:2,500) and HRP-conjugated goat anti-mouse secondary antibody (Cat#101, 1:20,000) respectively. Image was developed using FeQ™ ECL Substrate Kit (Cat#226).