

KD-Validated Anti-HDHD2 Mouse Monoclonal Antibody



Catalog #: 64810

Aliases

HDHD2; Haloacid Dehalogenase Like Hydrolase Domain Containing 2; Haloacid Dehalogenase-Like Hydrolase Domain-Containing Protein 2; DKFZP564D1378; Haloacid Dehalogenase-Like Hydrolase Domain Containing 2; Epididymis Secretory Sperm Binding Protein; Epididymis Secretory Protein Li 301; 3110052N05Rik; HEL-S-301

Background

Gene Name: HDHD2

NCBI Gene Entry: [84064](#)

UniProt Entry: [Q9H0R4](#)

Application Information

Molecular Weight: Predicted, 29 kDa; observed, 29 kDa

Clonality: Mouse monoclonal antibody

Clone ID: 24GB13055

Species Reactivity: Human, mouse, rat

Applications Tested: Western blotting (WB), immunocytochemistry (IC)

Immunogen

Recombinant protein of human HDHD2

Isotype

Mouse IgG1

Storage Buffer

Supplied in PBS (pH 7.4) containing 50% glycerol, and 0.02% sodium azide.

Storage

Store at -20 °C for one year.

Recommended Dilutions

Western Blotting (WB): 1:500-1:2,500

Immunocytochemistry (IC): 1:100-1:1,000

Note: This product is for research use only.

SUPPORT

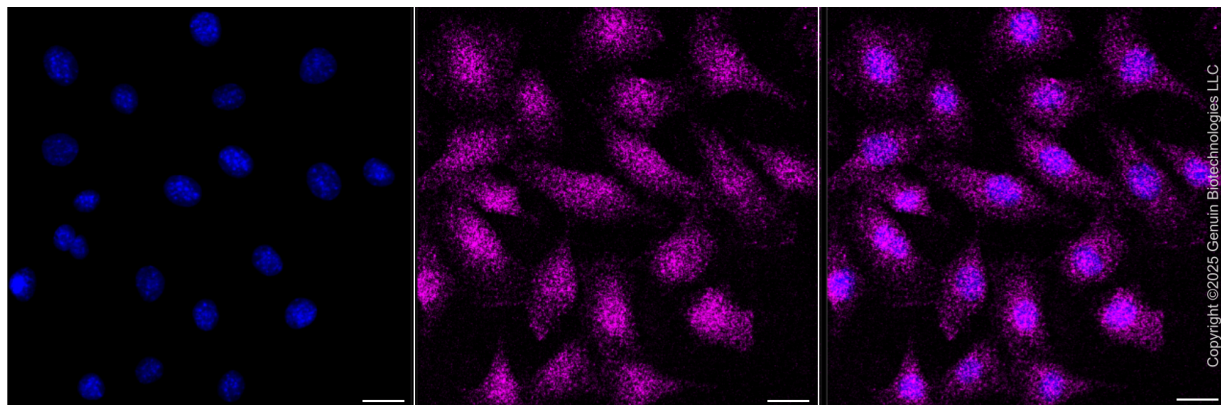
SUPPORT@GENUINBIOTECH.COM
TEL: +1-540-855-7041

ORDERS

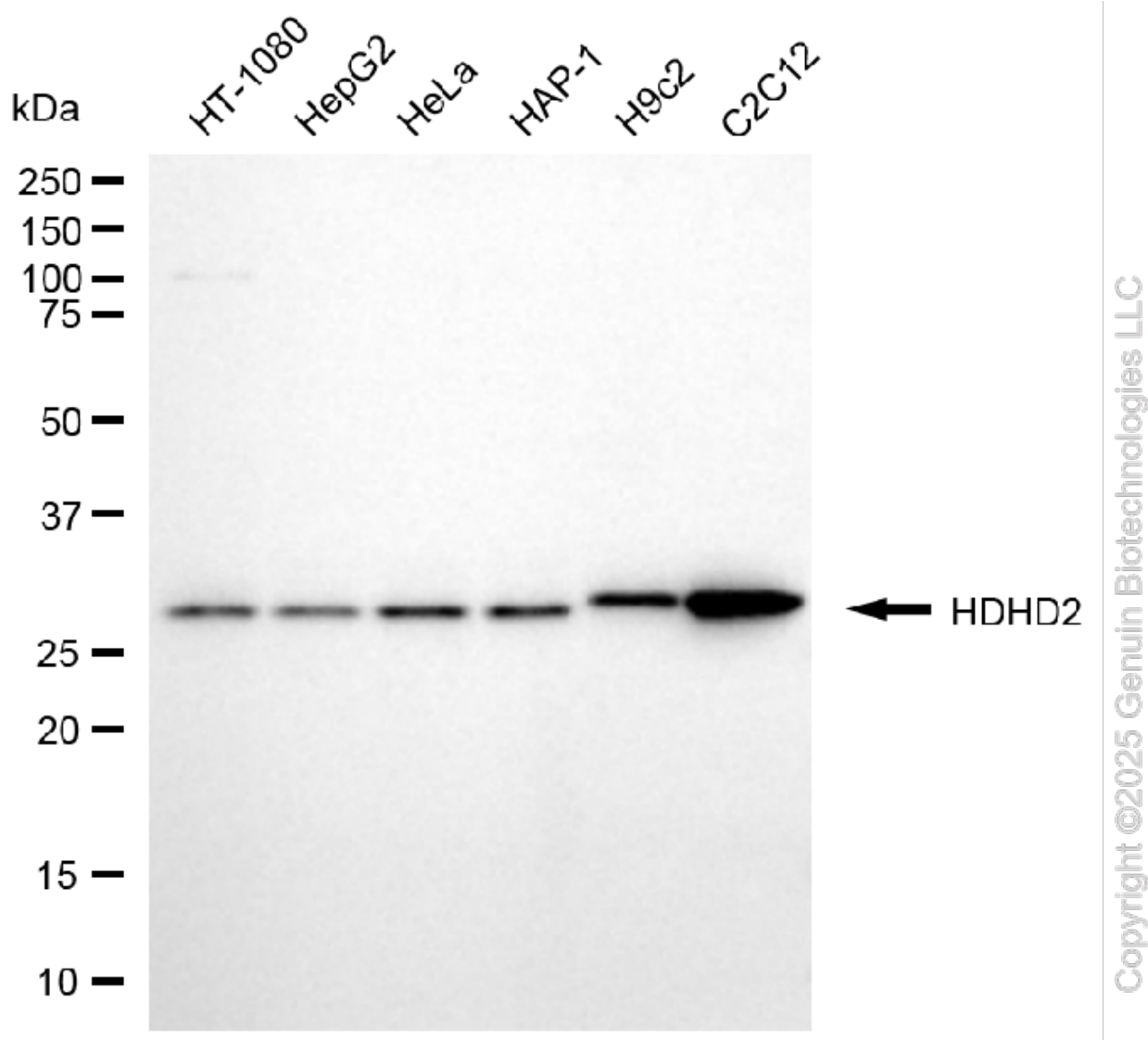
SALES@GENUINBIOTECH.COM
FAX: +1-540-855-7041

WWW.GENUINBIOTECH.COM

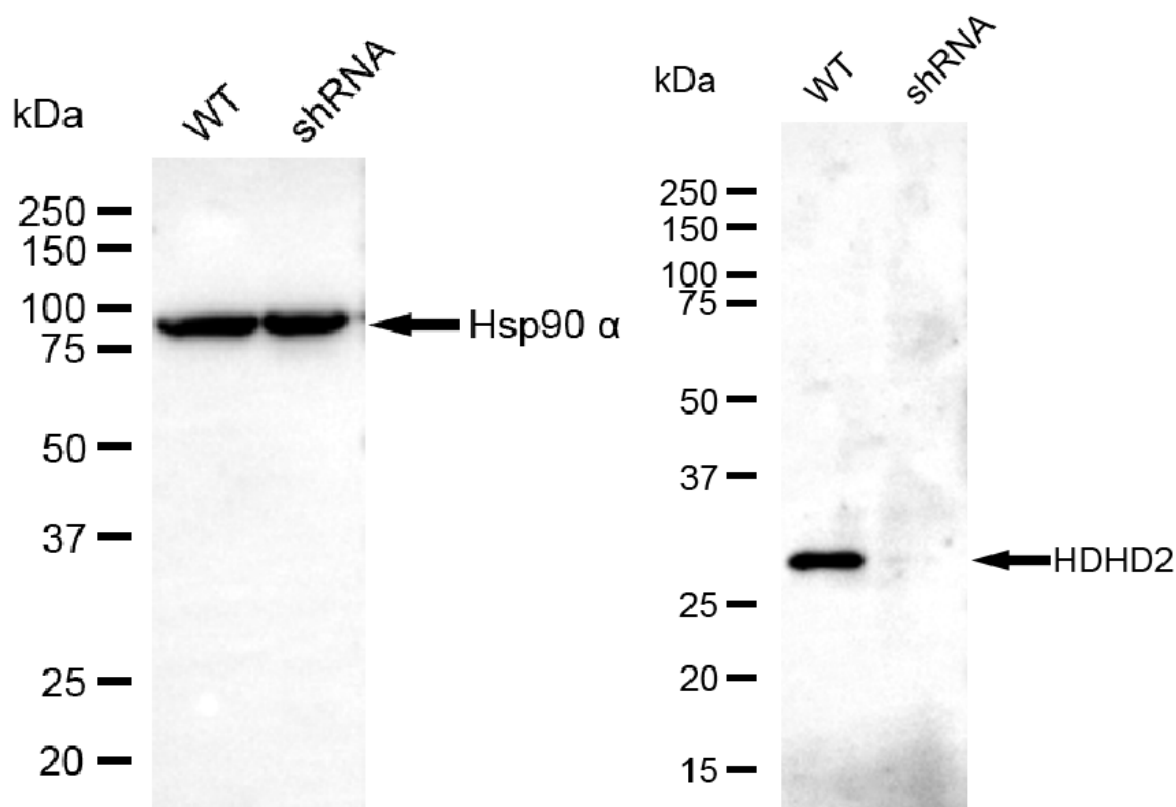
Validation Data



Immunocytochemical staining of C2C12 cells with anti-HDHD2 antibody (Cat#64810, 1:1,000) . Nuclei were stained blue with DAPI; HDHD2 was stained magenta with Alexa Fluor® 647. Images were taken using Leica stellaris 5. Protein abundance based on laser Intensity and smart gain: Low. Scale bar, 20 μ m.



Western blotting analysis using anti-HDHD2 antibody (Cat#64810). Total cell lysates (30 µg) from various cell lines were loaded and separated by SDS-PAGE. The blot was incubated with anti-HDHD2 antibody (Cat#64810, 1:2,500) and HRP-conjugated goat anti-mouse secondary antibody (Cat#101, 1:20,000) respectively. Image was developed using FeQ™ ECL Substrate Kit (Cat#226).



Copyright ©2025 Genuin Biotechnologies LLC

Western blotting analysis using anti-HDHD2 antibody (Cat#64810). HDHD2 expression in wild-type (WT) and HDHD2 shRNA knockdown (KD) HeLa cells with 20 µg of total cell lysates. Hsp90 α serves as a loading control. The blot was incubated with anti-HDHD2 antibody (Cat#64810, 1:2,500) and HRP-conjugated goat anti-mouse secondary antibody (Cat#101, 1:20,000) respectively. Image was developed using FeQ™ ECL Substrate Kit (Cat#226).