

KD-Validated Anti-GOLM1 Mouse Monoclonal Antibody



Catalog #: 64814

Aliases

GOLM1; Golgi Membrane Protein 1; Golgi Phosphoprotein 2; BA379P1.3; C9orf155; GOLPH2; GP73; Golgi Membrane Protein GP73; FLJ23608; Chromosome 9 Open Reading Frame 155; Epididymis Luminal Protein 46; Golgi Protein, 73-KD; PSEC0257; HEL46

Background

Gene Name: GOLM1

NCBI Gene Entry: [51280](#)

UniProt Entry: [Q8NBJ4](#)

Application Information

Molecular Weight: Predicted, 45 kDa; observed, 70-75 kDa

Clonality: Mouse monoclonal antibody

Clone ID: 24GB13075

Species Reactivity: Human

Applications Tested: Western blotting (WB), flow cytometry (FCM), immunocytochemistry (IC)

Immunogen

Recombinant protein of human GOLM1

Isotype

Mouse IgG1

Storage Buffer

Supplied in PBS (pH 7.4) containing 50% glycerol, and 0.02% sodium azide.

Storage

Store at -20 °C for one year.

Recommended Dilutions

Western Blotting (WB): 1:200-1:1,000

Flow Cytometry (FCM): 1:2,000

Immunocytochemistry (IC): 1:100-1:1,000

Note: This product is for research use only.

SUPPORT

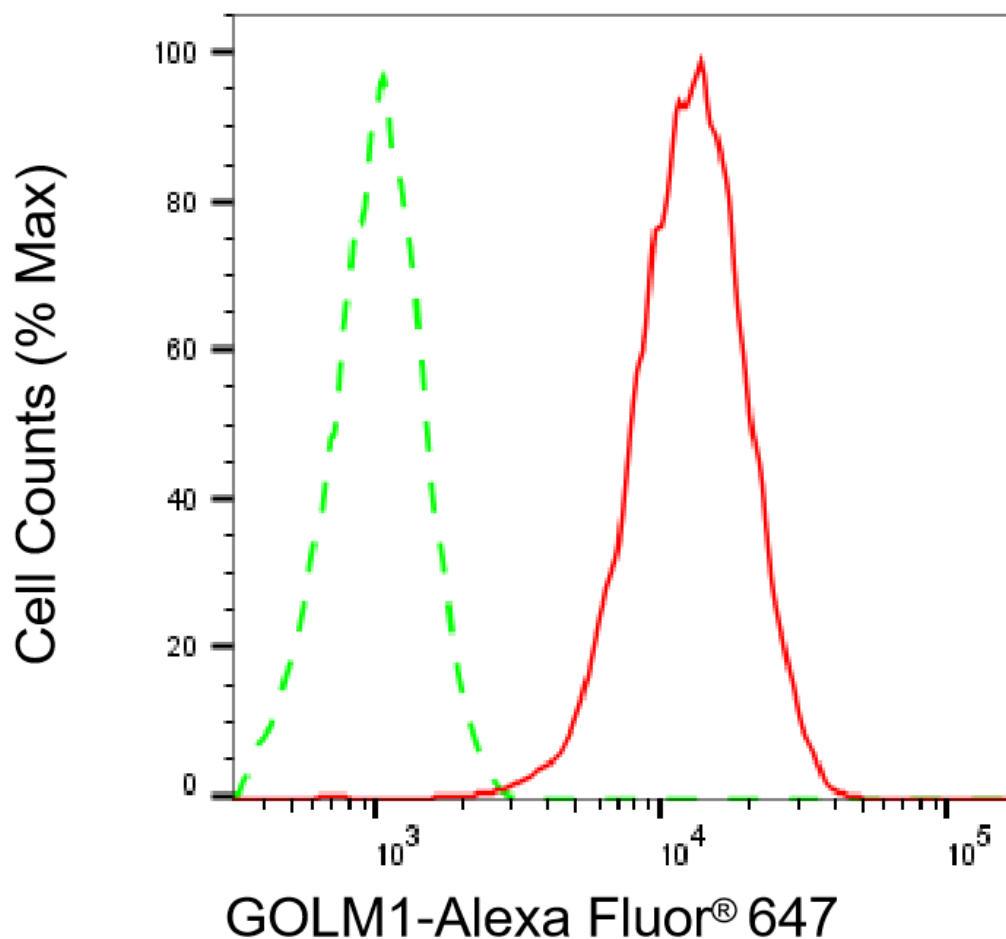
SUPPORT@GENUINBIOTECH.COM
TEL: +1-540-855-7041

ORDERS

SALES@GENUINBIOTECH.COM
FAX: +1-540-855-7041

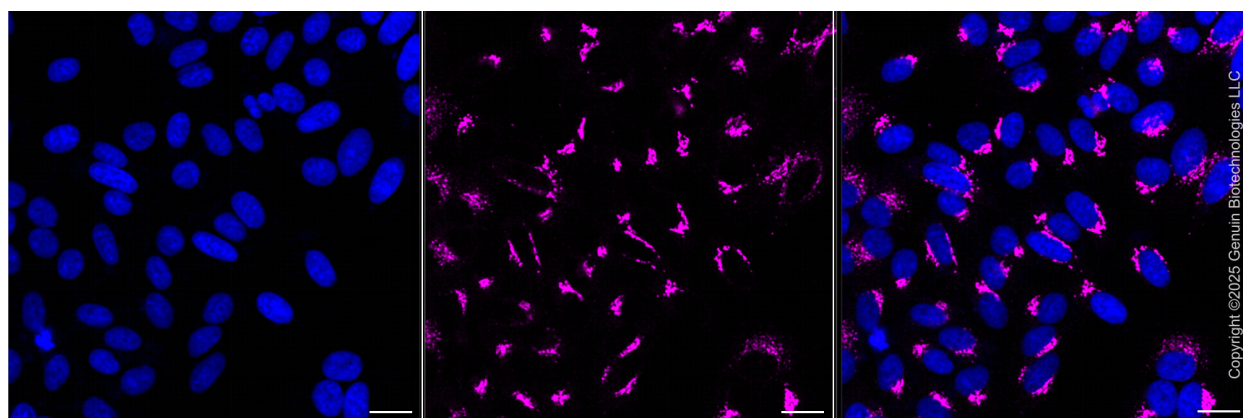
WWW.GENUINBIOTECH.COM

Validation Data



Copyright ©2025 Genuin Biotechnologies LLC

Flow cytometric analysis of GOLM1 expression in HepG2 cells using anti-GOLM1 antibody (Cat#64814, 1:2,000). Green, isotype control; red, GOLM1.



Copyright ©2025 Genuin Biotechnologies LLC

Immunocytochemical staining of HepG2 cells with anti- associated protein antibody (Cat#64814,

SUPPORT

SUPPORT@GENUINBIOTECH.COM
TEL: +1-540-855-7041

ORDERS

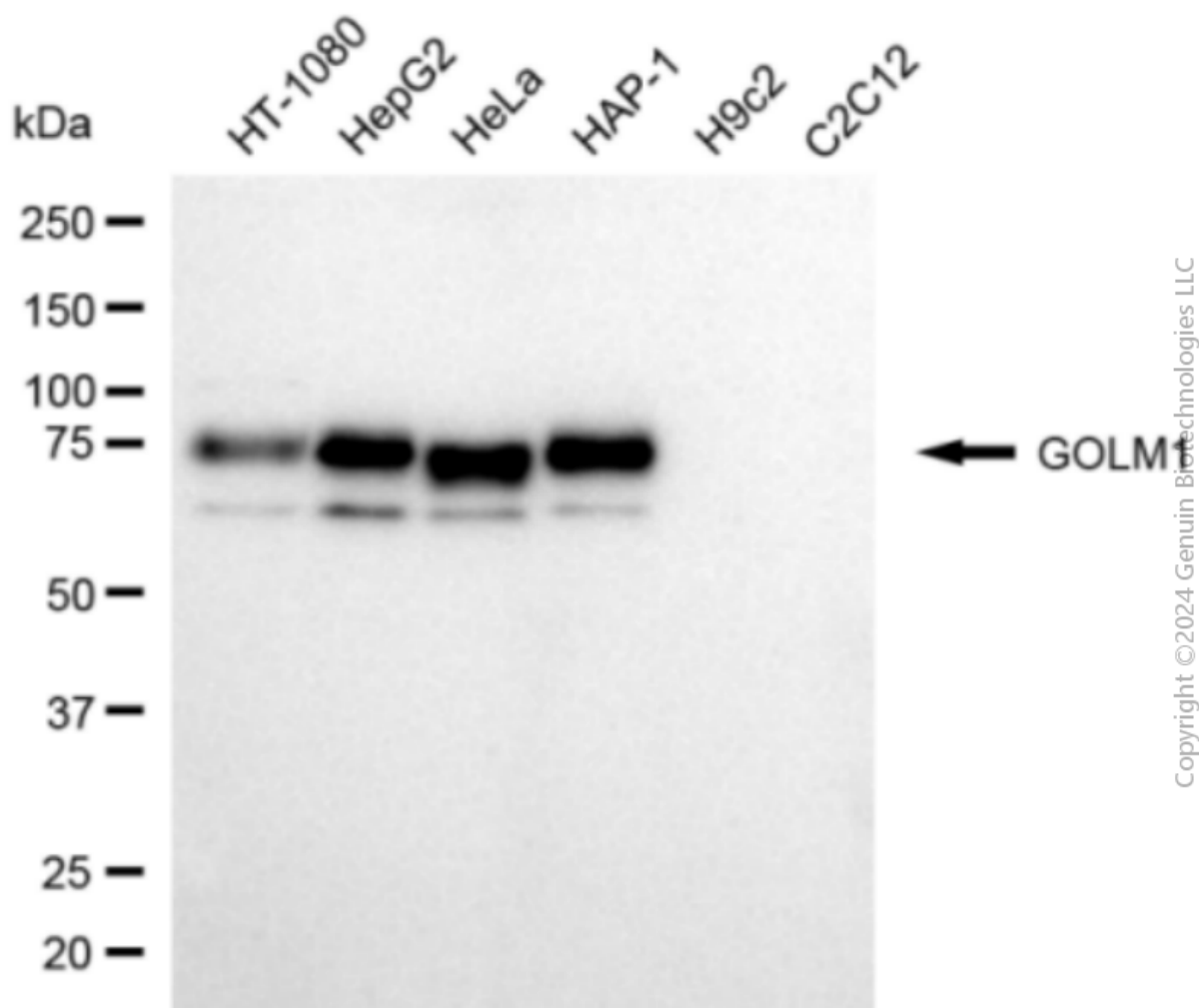
SALES@GENUINBIOTECH.COM
FAX: +1-540-855-7041

WWW.GENUINBIOTECH.COM

KD-Validated Anti-GOLM1 Mouse Monoclonal Antibody

PAGE 3

1:1,000). Nuclei were stained blue with DAPI; associated protein was stained magenta with Alexa Fluor® 647. Images were taken using Leica stellaris 5. Protein abundance based on laser Intensity and smart gain: High. Scale bar, 20 µm.



Western blotting analysis using anti-GOLM1 antibody (Cat#64814). Total cell lysates (30 µg) from various cell lines were loaded and separated by SDS-PAGE. The blot was incubated with anti-GOLM1 antibody (Cat#64814, 1:1,000) and HRP-conjugated goat anti-mouse secondary antibody (Cat#101, 1:20,000) respectively. Image was developed using FeQ™ ECL Substrate Kit (Cat#226).

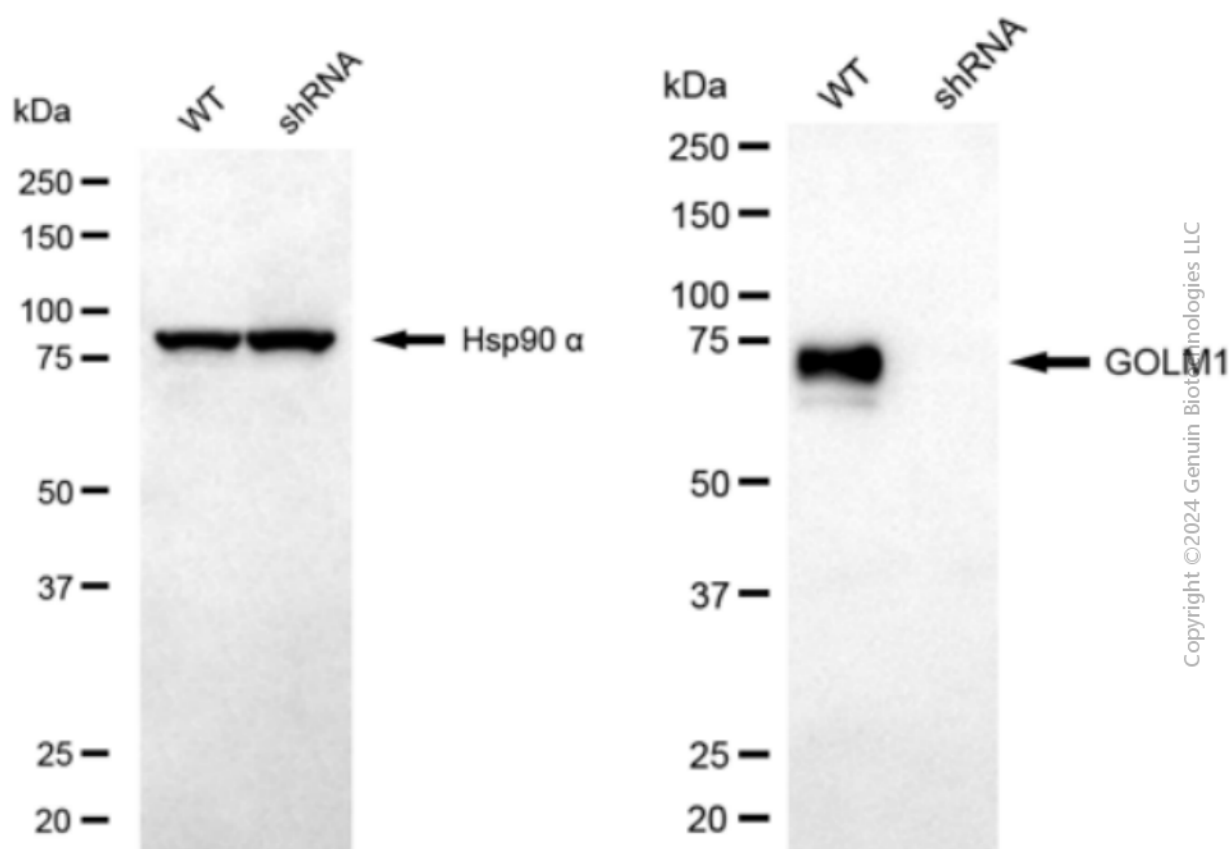
SUPPORT

SUPPORT@GENUINBIOTECH.COM
TEL: +1-540-855-7041

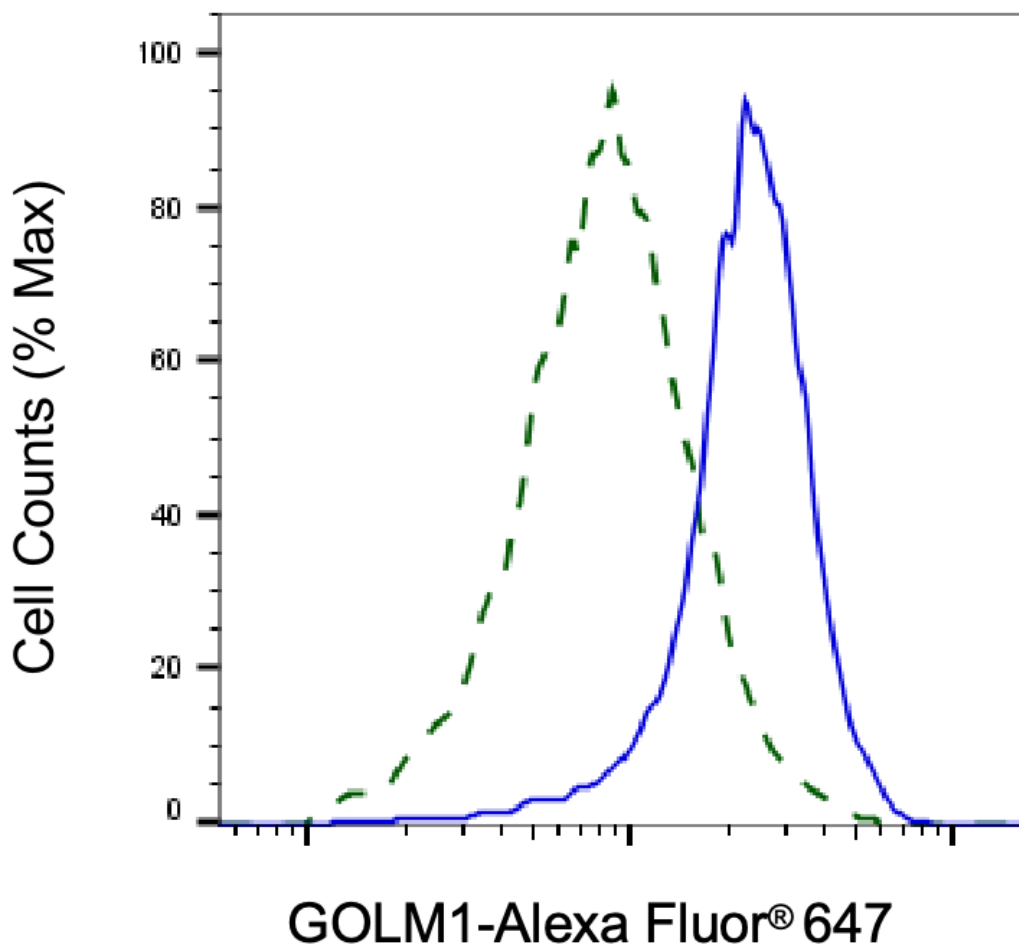
ORDERS

SALES@GENUINBIOTECH.COM
FAX: +1-540-855-7041

WWW.GENUINBIOTECH.COM

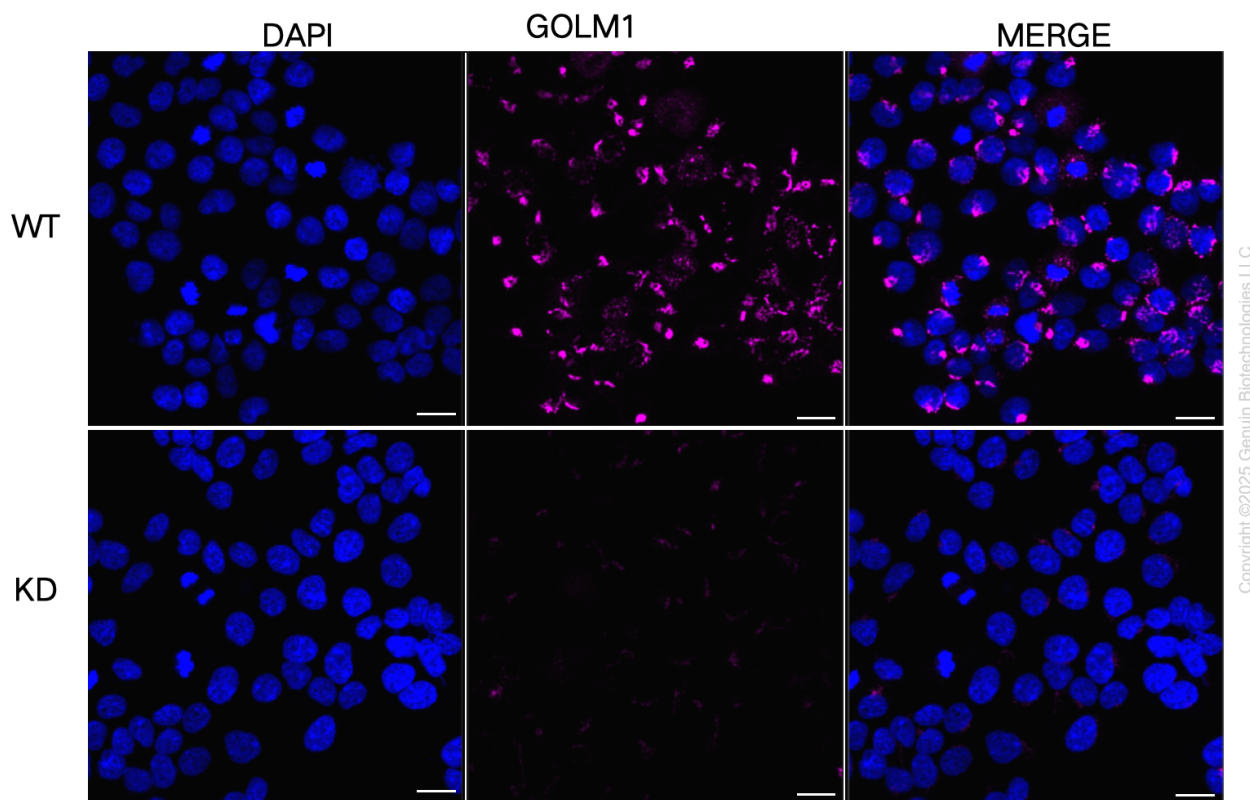


Western blotting analysis using anti-GOLM1 antibody (Cat#64814). GOLM1 expression in wild-type (WT) and GOLM1 shRNA knockdown (KD) HeLa cells with 20 µg of total cell lysates. Hsp90 α serves as a loading control. The blot was incubated with anti-GOLM1 antibody (Cat#64814, 1:1,000) and HRP-conjugated goat anti-mouse secondary antibody (Cat#101, 1:20,000) respectively. Image was developed using FeQ™ ECL Substrate Kit (Cat#226).



Copyright ©2025 Genuin Biotechnologies LLC

Validation of GOLM1 knockdown using flow cytometry. Wild-type(WT, Blue) and knockdown(KD, Green) HeLa cells were stained with anti-GOLM1 antibody (Cat#64814, 1:2,000) and analyzed using BD flow cytometer.



Immunocytochemical staining of HeLa cells using anti-GOLM1 antibody (Cat#64814, 1:1,000), Top panel: wild-type (WT); Bottom panel: GOLM1 shRNA knockdown (KD). Nuclei were stained blue with DAPI; GOLM1 was stained magenta with Alexa Fluor® 647. Scale bar, 20 μ m.