

KD-Validated Anti-DDOST Mouse Monoclonal Antibody



Catalog #: 64820

Aliases

DDOST; Dolichyl-Diphosphooligosaccharide--Protein Glycosyltransferase Non-Catalytic Subunit; OST48; KIAA0115; WBP1; OST; Dolichyl-Diphosphooligosaccharide--Protein Glycosyltransferase 48 KDa Subunit; Advanced Glycation End-Product Receptor 1; Oligosaccharyl Transferase 48 KDa Subunit; Oligosaccharyltransferase Subunit 48; Dolichyl-Diphosphooligosaccharide--Protein Glycosyltransferase Subunit (Non-Catalytic); Dolichyl-Diphosphooligosaccharide-Protein Glycosyltransferase; Dolichyl-Diphosphooligosaccharide-Protein Glycotransferase; Advanced Glycation Endproduct Receptor 1; Oligosaccharyltransferase 48 KDa Subunit; DDOST 48 KDa Subunit; EC 2.4.1.119; OKSWcl45; AGER1; CDG1R; GATD6

Background

Gene Name: DDOST

NCBI Gene Entry: [1650](#)

UniProt Entry: [P39656](#)

Application Information

Molecular Weight: Predicted, 51 kDa; observed, 49 kDa

Clonality: Mouse monoclonal antibody

Clone ID: 24GB13105

Species Reactivity: Human, mouse, rat

Applications Tested: Western blotting (WB), flow cytometry (FCM)

Immunogen

Recombinant protein of human DDOST

Isotype

Mouse IgG2a

Storage Buffer

Supplied in PBS (pH 7.4) containing 50% glycerol, and 0.02% sodium azide.

Storage

Store at -20 °C for one year.

Recommended Dilutions

Western Blotting (WB): 1:500-1:2,500

SUPPORT

SUPPORT@GENUINBIOTECH.COM
TEL: +1-540-855-7041

ORDERS

SALES@GENUINBIOTECH.COM
FAX: +1-540-855-7041

WWW.GENUINBIOTECH.COM

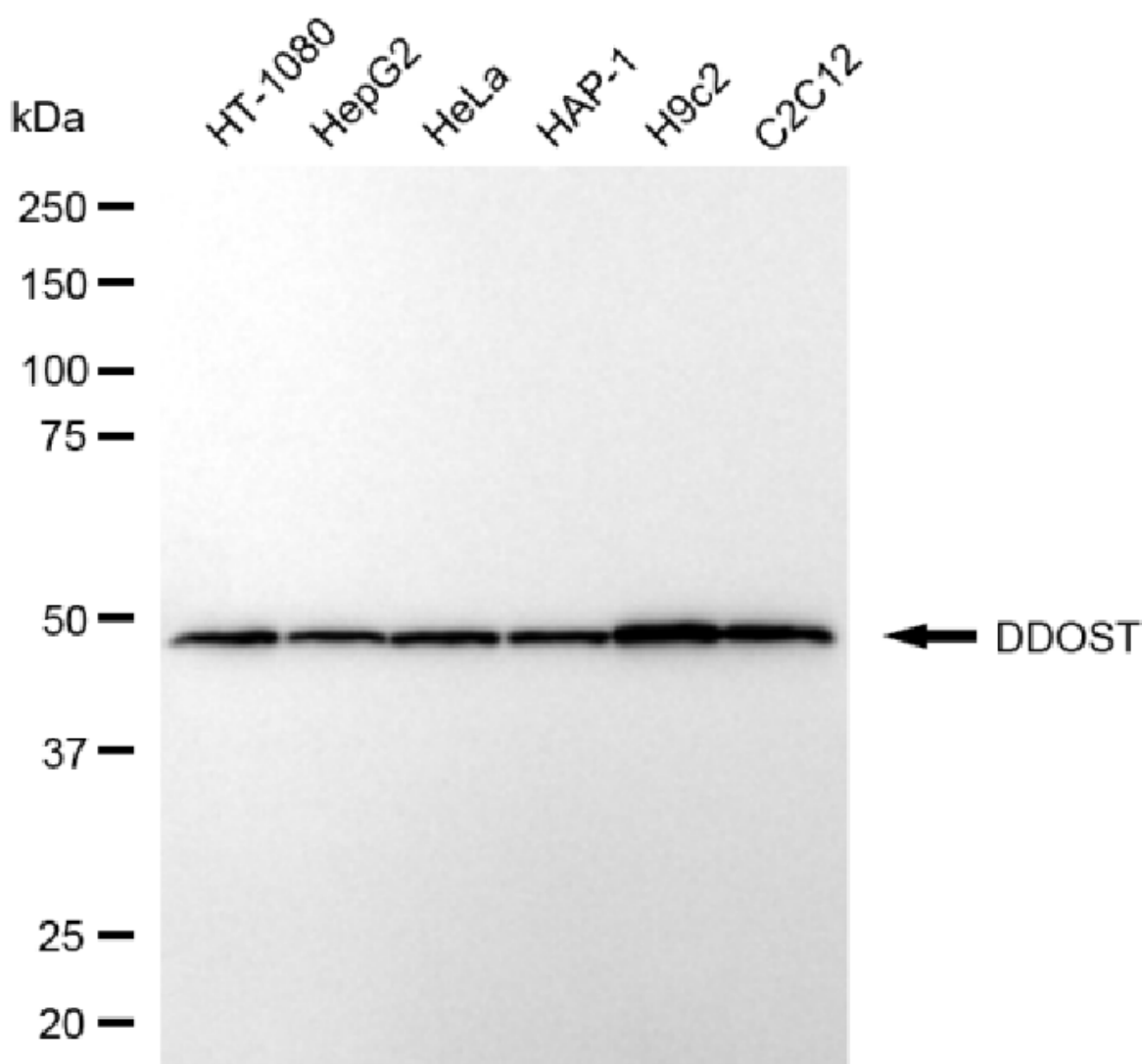
KD-Validated Anti-DDOST Mouse Monoclonal Antibody

PAGE 2

Flow Cytometry (FCM): 1:2,000

Note: This product is for research use only.

Validation Data



Copyright ©2025 Genuin Biotechnologies LLC

Western blotting analysis using anti-DDOST antibody (Cat#64820). Total cell lysates (30 µg) from various cell lines were loaded and separated by SDS-PAGE. The blot was incubated with anti-DDOST antibody (Cat#64820, 1:2,500) and HRP-conjugated goat anti-mouse secondary antibody (Cat#101, 1:20,000) respectively. Image was developed using NaQ™ ECL Substrate Kit (Cat#716).

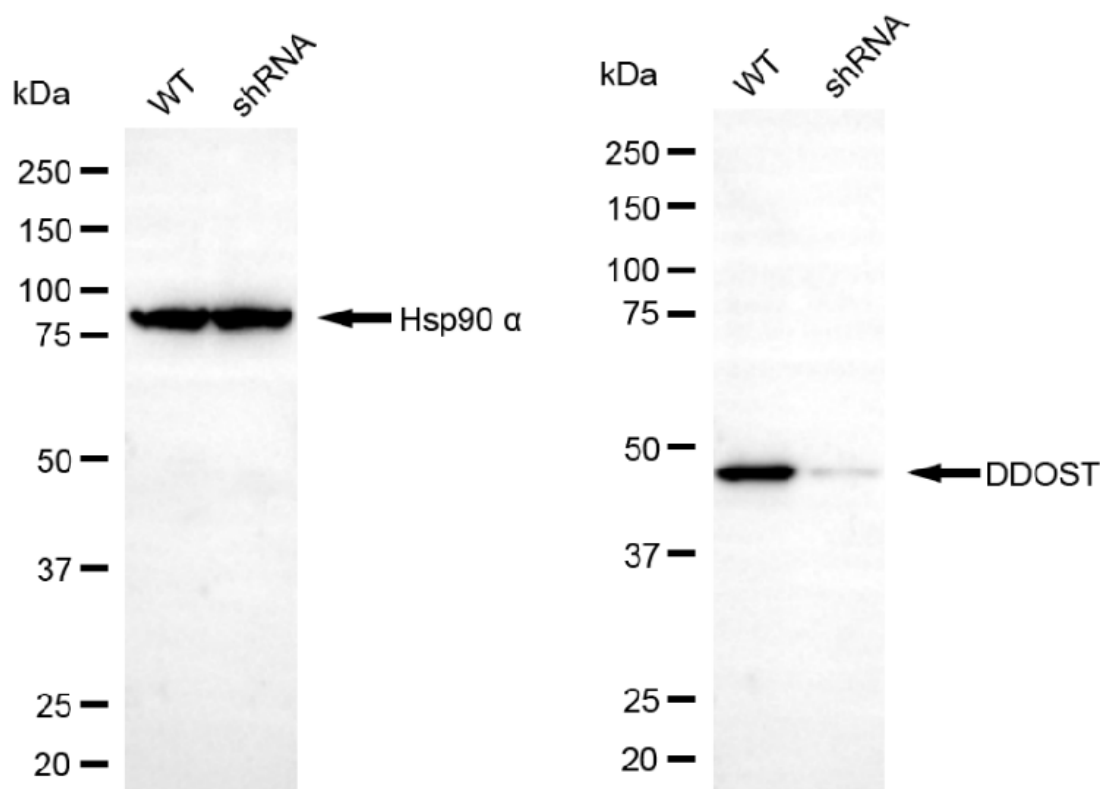
SUPPORT

SUPPORT@GENUINBIOTECH.COM
TEL: +1-540-855-7041

ORDERS

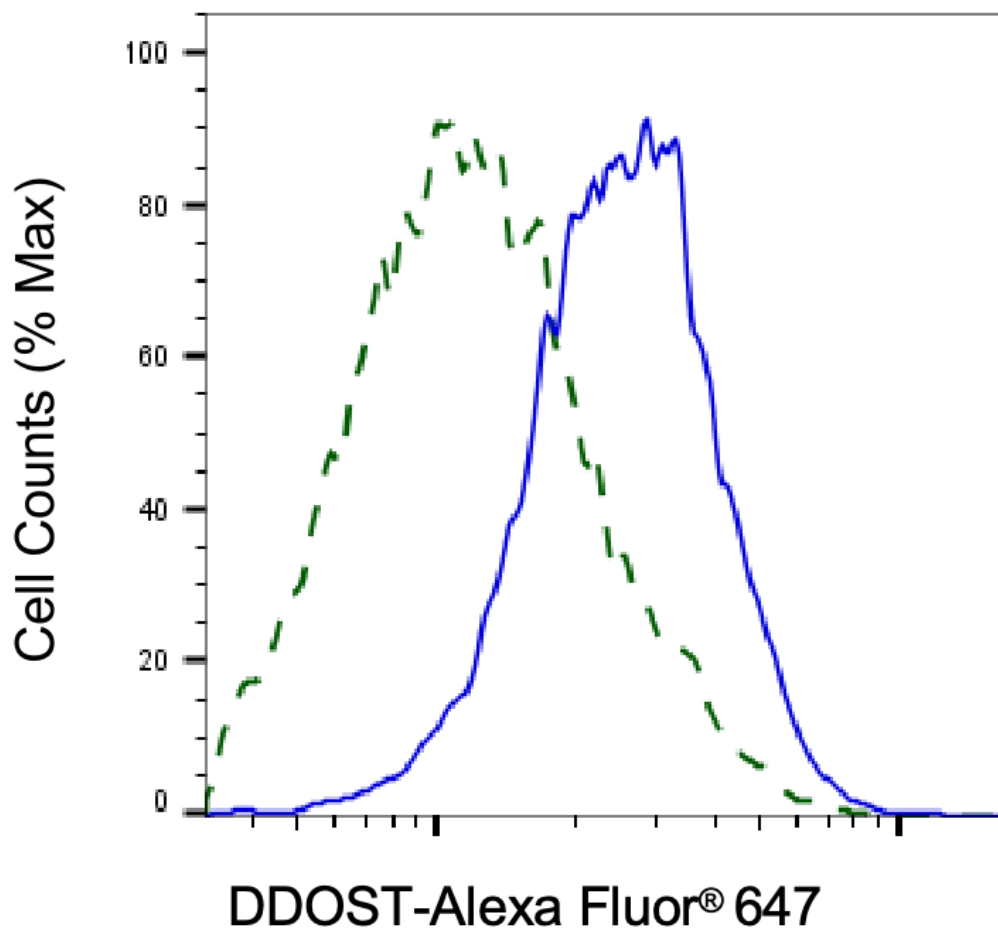
SALES@GENUINBIOTECH.COM
FAX: +1-540-855-7041

WWW.GENUINBIOTECH.COM



Copyright ©2025 Genuin Biotechnologies LLC

Western blotting analysis using anti-DDOST antibody (Cat#64820). DDOST expression in wild-type (WT) and DDOST shRNA knockdown (KD) HeLa cells with 20 µg of total cell lysates. Hsp90 α serves as a loading control. The blot was incubated with anti-DDOST antibody (Cat#64820, 1:2,500) and HRP-conjugated goat anti-mouse secondary antibody (Cat#101, 1:20,000) respectively. Image was developed using FeQ™ ECL Substrate Kit (Cat#226).



Copyright ©2025 Genuin Biotechnologies LLC

Validation of DDOST knockdown using flow cytometry. Wild-type(WT, Blue) and knockdown(KD, Green) HeLa cells were stained with anti-DDOST antibody (Cat#64820, 1:2,000) and analyzed using BD flow cytometer.