

# KD-Validated Anti-GTP Cyclohydrolase 1 Mouse Monoclonal Antibody



**Catalog #: 64824**

## Aliases

GCH1; GTP Cyclohydrolase 1; GTP Cyclohydrolase I; GTPCH1; DYT5a; DYT5; GCH; Dystonia 14; EC 3.5.4.16; GTP-CH-I; DYT14; Guanosine 5'-Triphosphate Cyclohydrolase I; Dopa-Responsive Dystonia; GTP-CH-1; HPABH4B

## Background

Gene Name: GCH1

NCBI Gene Entry: [2643](#)

UniProt Entry: [P30793](#)

## Application Information

Molecular Weight: Predicted, 28 kDa; observed, 30 kDa

Clonality: Mouse monoclonal antibody

Clone ID: 24GB13125

Species Reactivity: Human

Applications Tested: Western blotting (WB)

## Immunogen

Recombinant protein of human GCH1

## Isotype

Mouse IgG2a

## Storage Buffer

Supplied in PBS (pH 7.4) containing 50% glycerol, and 0.02% sodium azide.

## Storage

Store at -20 °C for one year.

## Recommended Dilutions

Western Blotting (WB): 1:1,000-1:2,500

**Note:** This product is for research use only.

## Validation Data

---

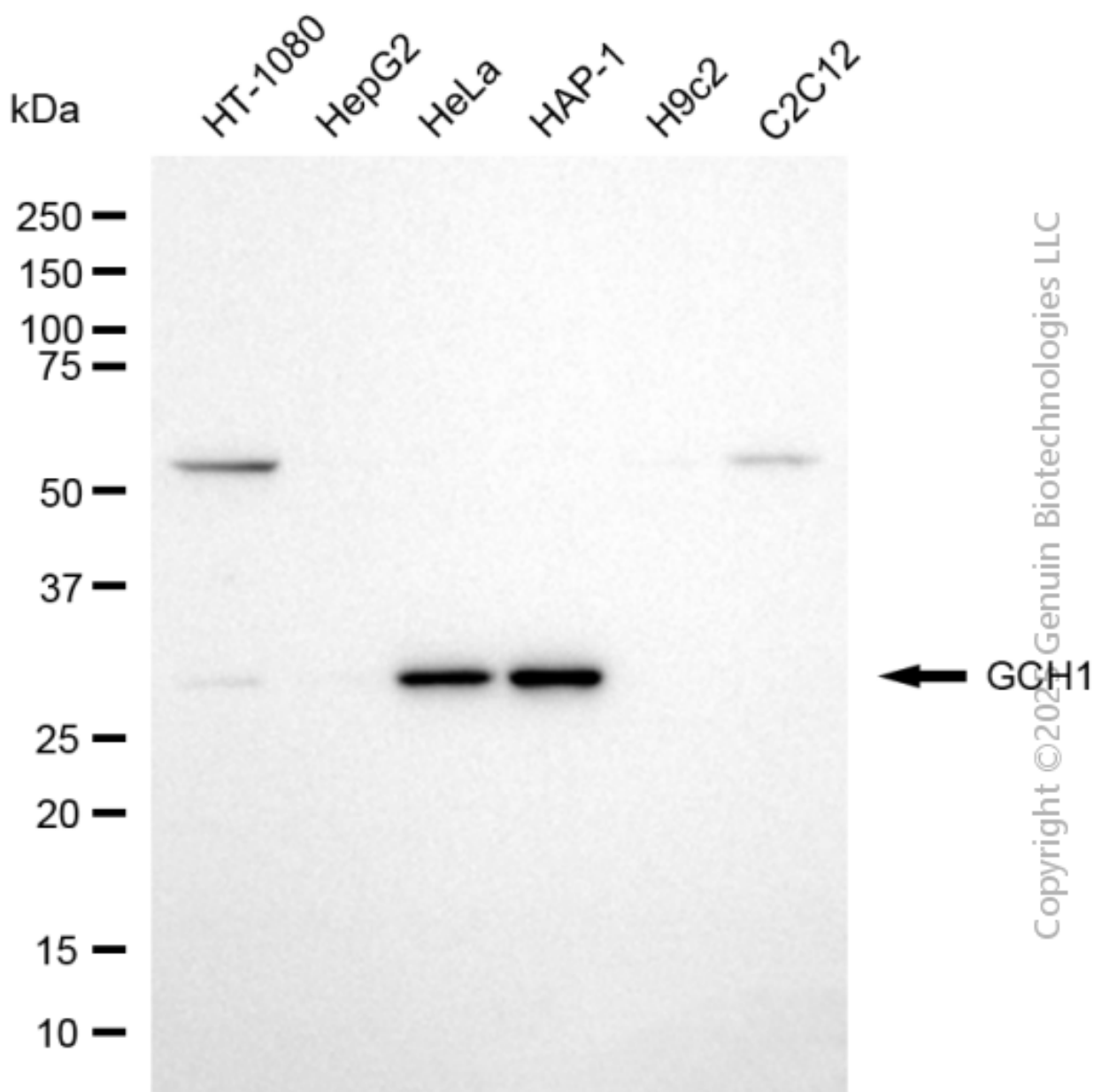
### SUPPORT

SUPPORT@GENUINBIOTECH.COM  
TEL: +1-540-855-7041

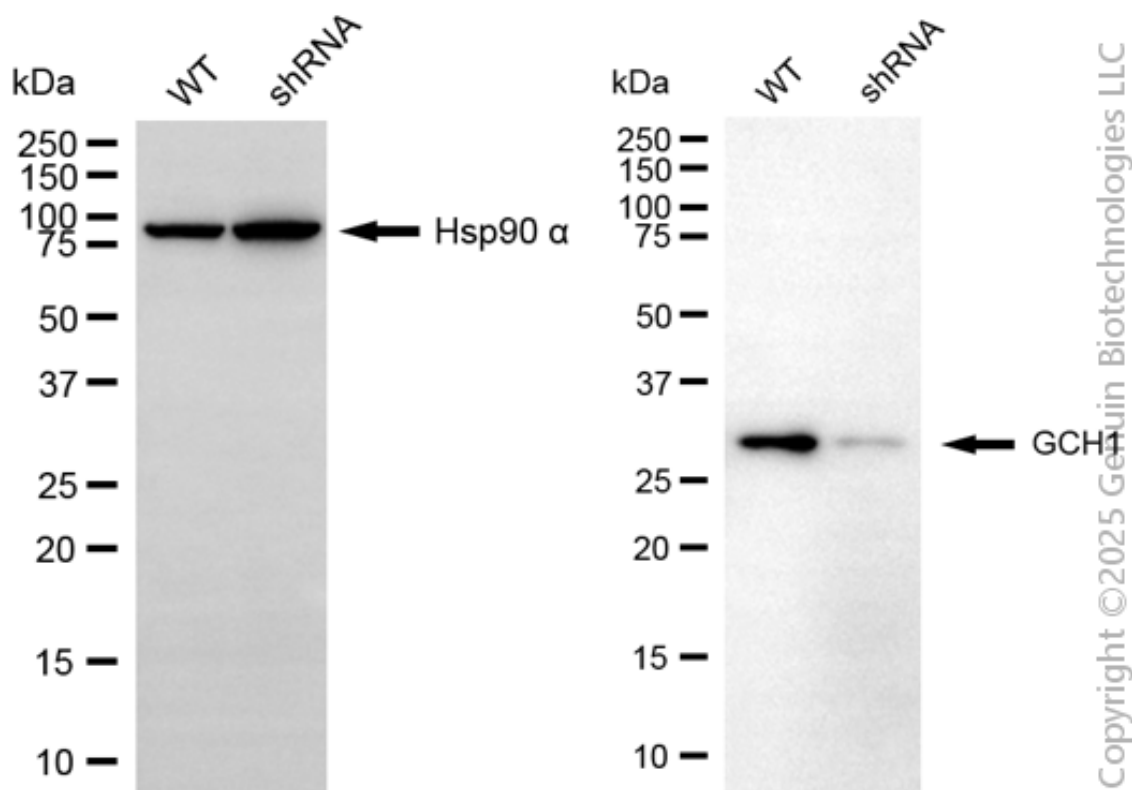
### ORDERS

SALES@GENUINBIOTECH.COM  
FAX: +1-540-855-7041

[WWW.GENUINBIOTECH.COM](http://WWW.GENUINBIOTECH.COM)



Western blotting analysis using anti-GCH1 antibody (Cat#64824). Total cell lysates (30  $\mu$ g) from various cell lines were loaded and separated by SDS-PAGE. The blot was incubated with anti-GCH1 antibody (Cat#64824, 1:2,500) and HRP-conjugated goat anti-mouse secondary antibody (Cat#101, 1:20,000) respectively. Image was developed using NaQ™ ECL Substrate Kit (Cat#716).



Western blotting analysis using anti-GCH1 antibody (Cat#64824). GCH1 expression in wild-type (WT) and GCH1 shRNA knockdown (KD) HeLa cells with 30 µg of total cell lysates. Hsp90 α serves as a loading control. The blot was incubated with anti-GCH1 antibody (Cat#64824, 1:2,500) and HRP-conjugated goat anti-mouse secondary antibody (Cat#101, 1:20,000) respectively. Image was developed using FeQ™ ECL Substrate Kit (Cat#226).