

KD-Validated Anti-GSTZ1 Mouse Monoclonal Antibody



Catalog #: 64825

Aliases

GSTZ1; Glutathione S-Transferase Zeta 1; GSTZ1-1; MAAI; Maleylacetoacetate Isomerase; MAI; Glutathione Transferase Zeta 1; S-(Hydroxyalkyl)Glutathione Lyase; Glutathione S-Aralkyltransferase; Glutathione S-Alkyltransferase; Glutathione S-Aryltransferase; Maleylacetone Isomerase; EC 2.5.1.18; EC 5.2.1.2; MAAID

Background

Gene Name: GSTZ1

NCBI Gene Entry: [2954](#)

UniProt Entry: [O43708](#)

Application Information

Molecular Weight: Predicted, 24 kDa; observed, 24 kDa

Clonality: Mouse monoclonal antibody

Clone ID: 24GB13130

Species Reactivity: Human

Applications Tested: Western blotting (WB), flow cytometry (FCM)

Immunogen

Recombinant protein of human GSTZ1

Isotype

Mouse IgG1

Storage Buffer

Supplied in PBS (pH 7.4) containing 50% glycerol, and 0.02% sodium azide.

Storage

Store at -20 °C for one year.

Recommended Dilutions

Western Blotting (WB): 1:1,000-1:2,500

Flow Cytometry (FCM): 1:2,000

Note: This product is for research use only.

SUPPORT

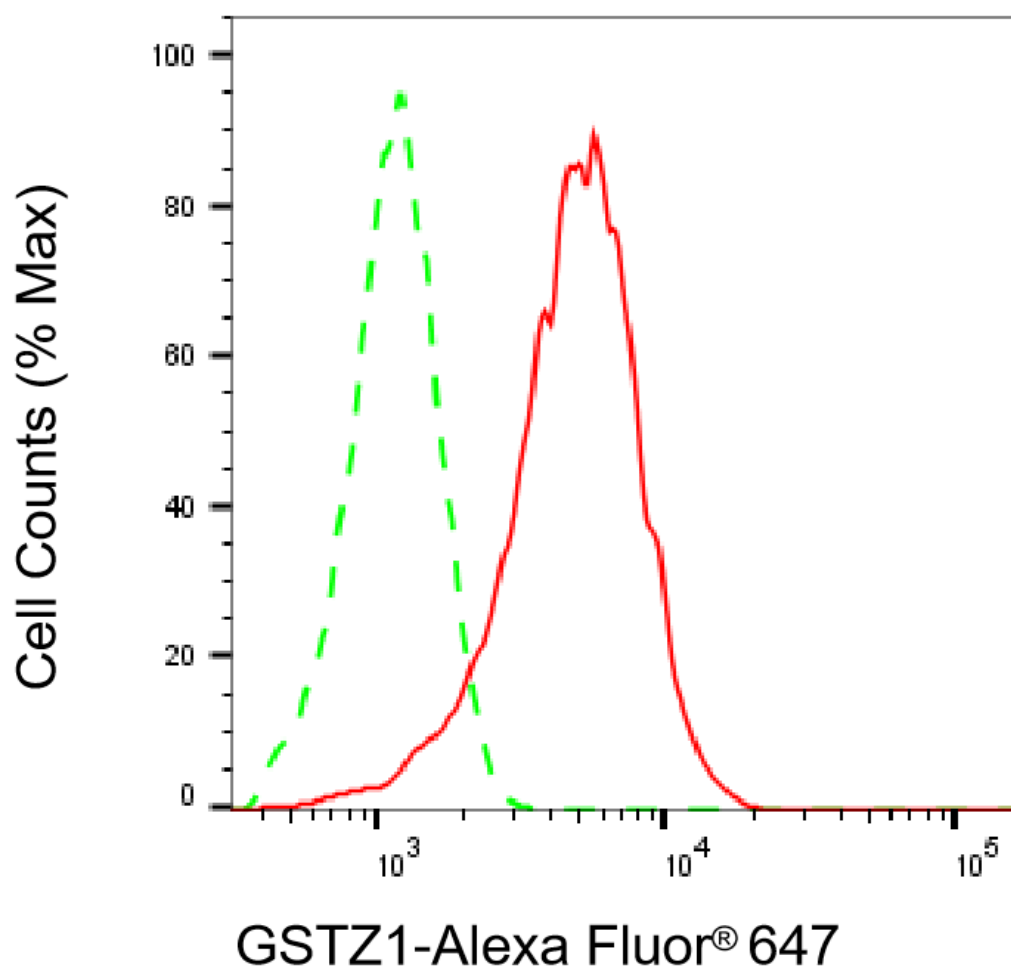
SUPPORT@GENUINBIOTECH.COM
TEL: +1-540-855-7041

ORDERS

SALES@GENUINBIOTECH.COM
FAX: +1-540-855-7041

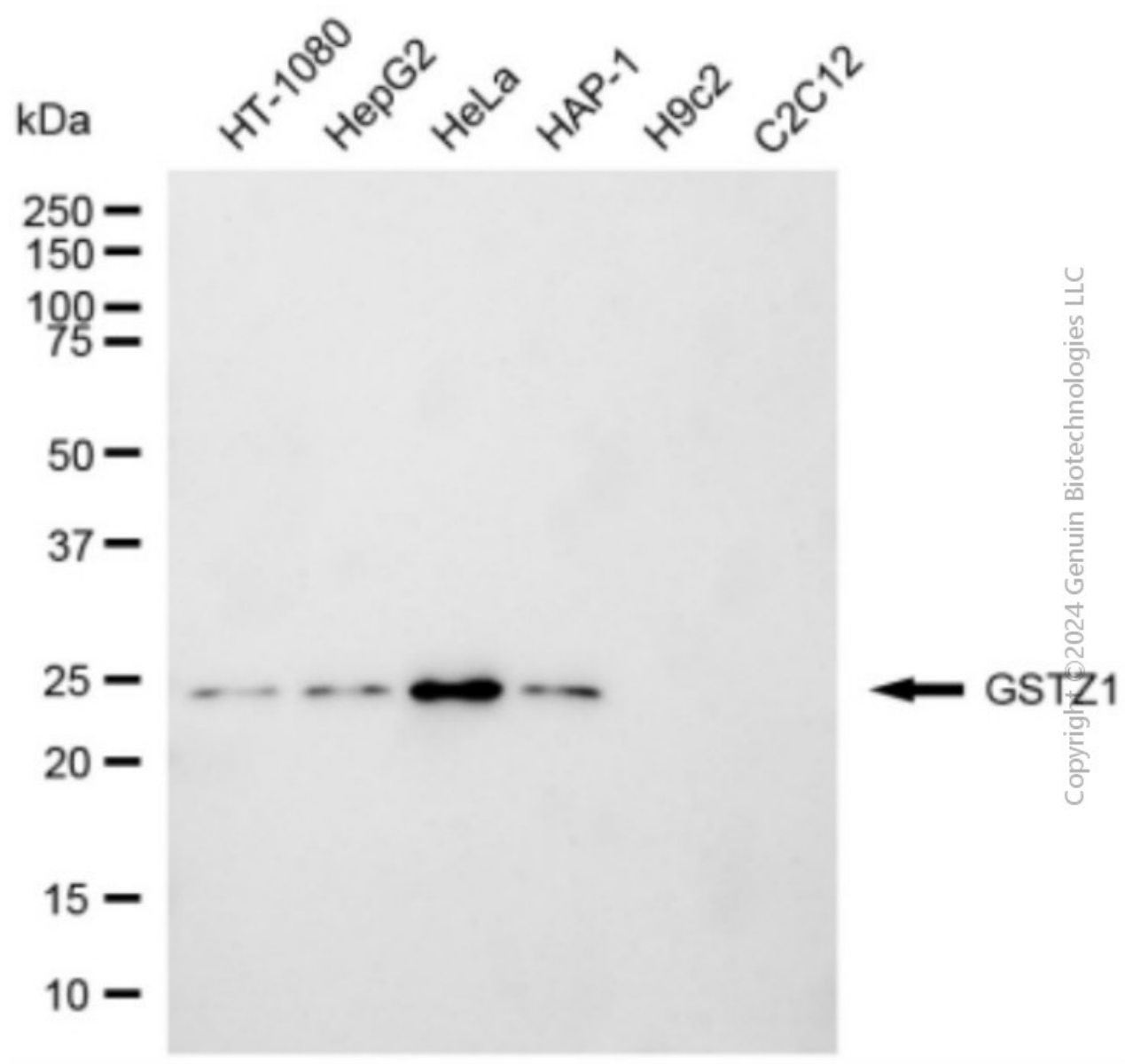
WWW.GENUINBIOTECH.COM

Validation Data

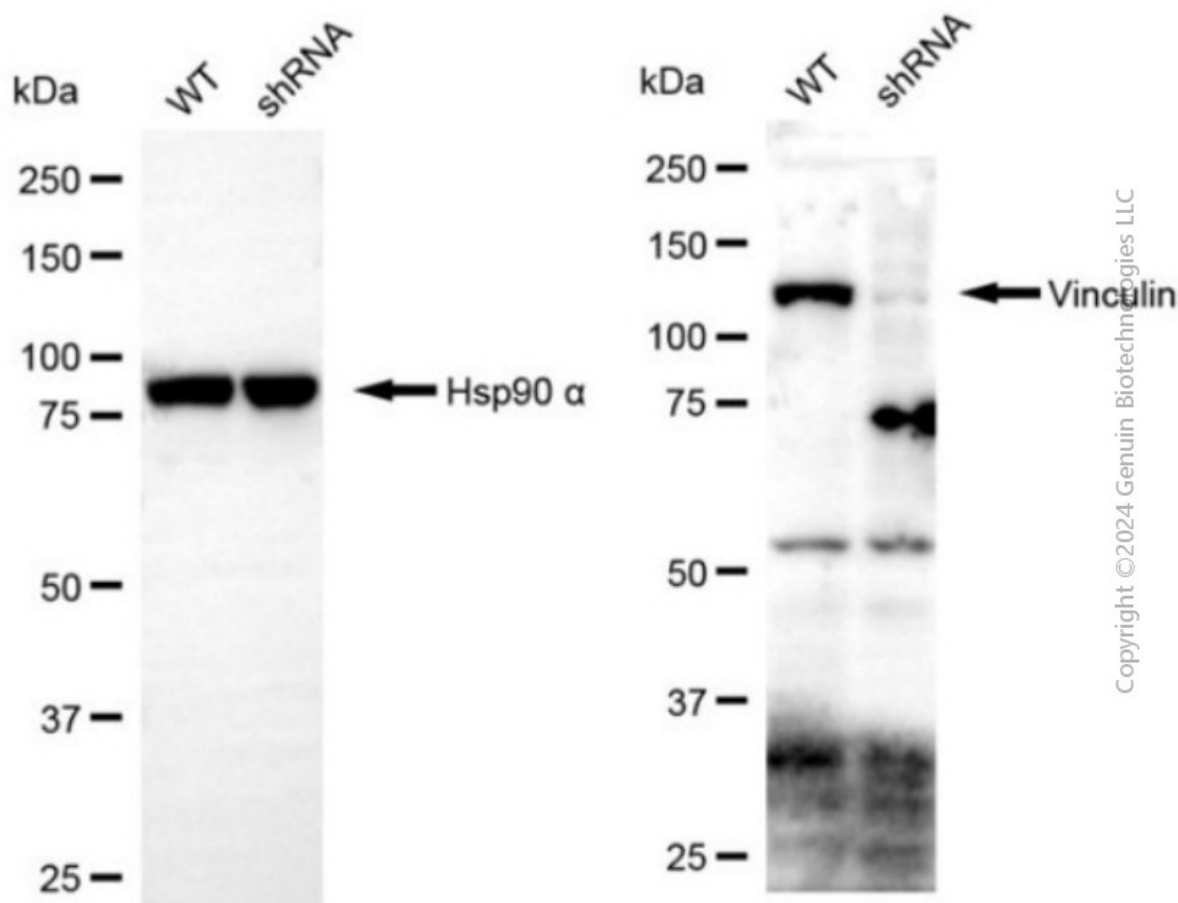


Copyright ©2025 Genuin Biotechnologies LLC

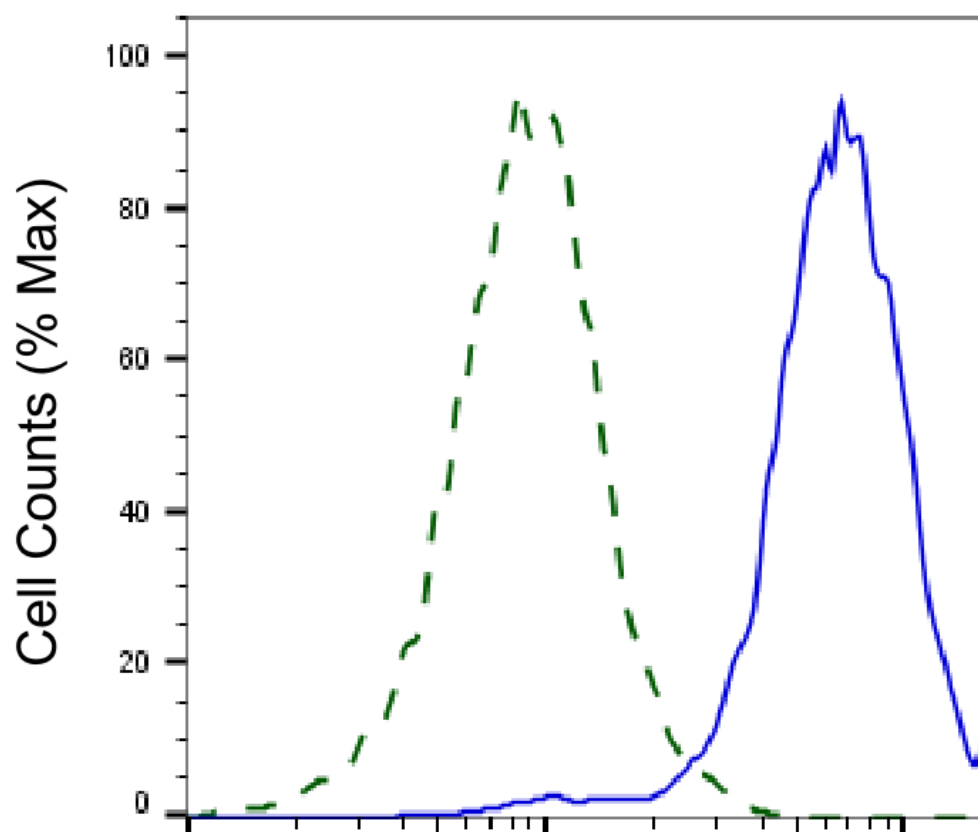
Flow cytometric analysis of GSTZ1 expression in HeLa cells using anti-GSTZ1 antibody (Cat#64825, 1:2,000). Green, isotype control; red, GSTZ1.



Western blotting analysis using anti-GSTZ1 antibody (Cat#64825). Total cell lysates (30 µg) from various cell lines were loaded and separated by SDS-PAGE. The blot was incubated with anti-GSTZ1 antibody (Cat#64825, 1:2,500) and HRP-conjugated goat anti-mouse secondary antibody (Cat#101, 1:20,000) respectively. Image was developed using NaQ™ ECL Substrate Kit (Cat#716).



Western blotting analysis using anti-GSTZ1 antibody (Cat#64825). GSTZ1 expression in wild-type (WT) and GSTZ1 shRNA knockdown (KD) HeLa cells with 20 μ g of total cell lysates. Hsp90 α serves as a loading control. The blot was incubated with anti-GSTZ1 antibody (Cat#64825, 1:2,500) and HRP-conjugated goat anti-mouse secondary antibody (Cat#101, 1:20,000) respectively. Image was developed using NaQ™ ECL Substrate Kit (Cat#716).



Copyright ©2025 Genuin Biotechnologies LLC

GSTZ1-Alexa Fluor® 647

Validation of GSTZ1 knockdown using flow cytometry. Wild-type(WT, Blue) and knockdown(KD, Green) HeLa cells were stained with anti-GSTZ1 antibody (Cat#64825, 1:2,000) and analyzed using BD flow cytometer.