

KD-Validated Anti-GDI1 Mouse Monoclonal Antibody



Catalog #: 64827

Aliases

GDI1; GDP Dissociation Inhibitor 1; RABGDIA; OPHN2; Oligophrenin-2; XAP-4; GDIL; Guanosine Diphosphate Dissociation Inhibitor 1; Rab GDP-Dissociation Inhibitor, Alpha; Rab GDP Dissociation Inhibitor Alpha; Protein XAP-4; Rab GDI Alpha; FLJ41411; MRX41; MRX48; GDI-1; Testis Secretory Sperm-Binding Protein Li 208a; Mental Retardation, X-Linked 41; Mental Retardation, X-Linked 48; RABGD1A; XLID41; XAP4; 1A

Background

Gene Name: GDI1

NCBI Gene Entry: [2664](#)

UniProt Entry: [P31150](#)

Application Information

Molecular Weight: Predicted, 51 kDa; observed, 60 kDa

Clonality: Mouse monoclonal antibody

Clone ID: 24GB13140

Species Reactivity: Human

Applications Tested: Western blotting (WB), flow cytometry (FCM), immunocytochemistry (IC)

Immunogen

Recombinant protein of human GDI1

Isotype

Mouse IgG1

Storage Buffer

Supplied in PBS (pH 7.4) containing 50% glycerol, and 0.02% sodium azide.

Storage

Store at -20 °C for one year.

Recommended Dilutions

Western Blotting (WB): 1:200-1:1,000

Flow Cytometry (FCM): 1:2,000

Immunocytochemistry (IC): 1:100-1:1,000

SUPPORT

SUPPORT@GENUINBIOTECH.COM
TEL: +1-540-855-7041

ORDERS

SALES@GENUINBIOTECH.COM
FAX: +1-540-855-7041

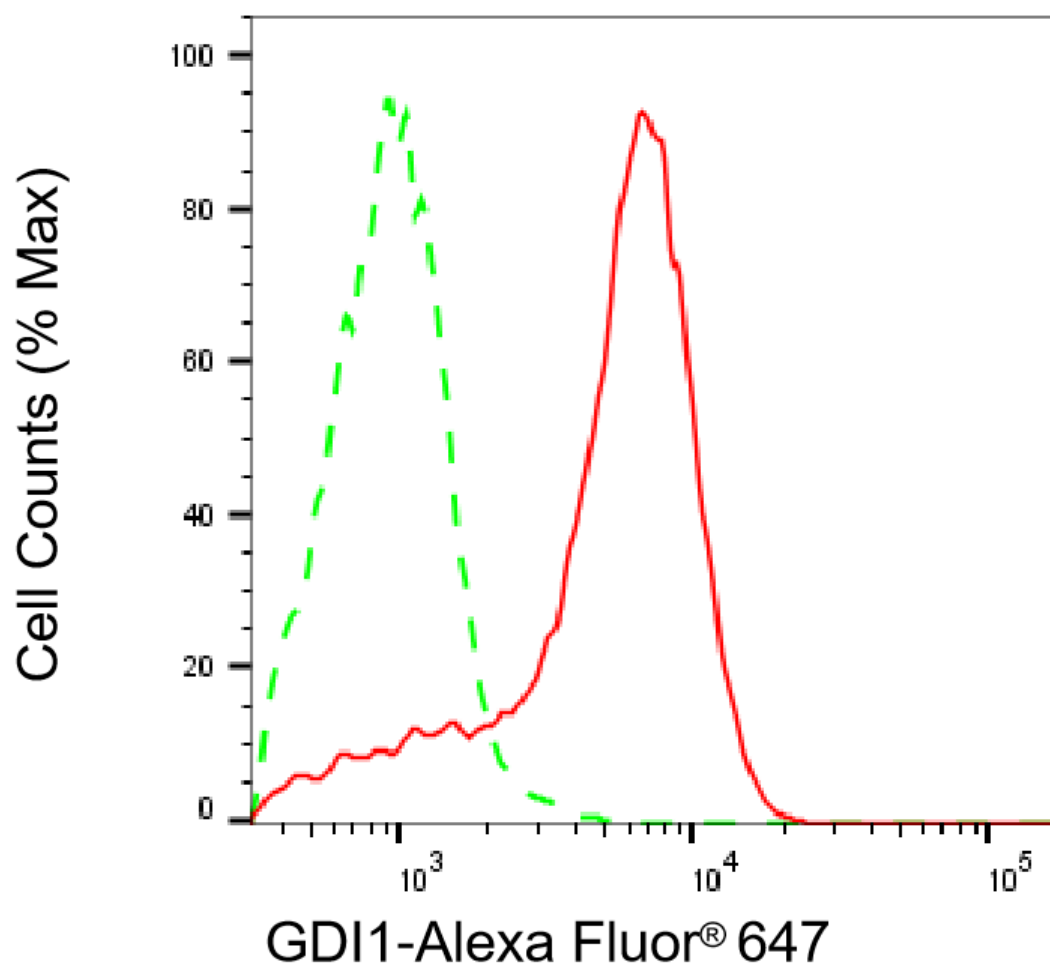
WWW.GENUINBIOTECH.COM

KD-Validated Anti-GDI1 Mouse Monoclonal Antibody

PAGE 2

Note: This product is for research use only.

Validation Data



Copyright ©2025 Genuin Biotechnologies LLC

Flow cytometric analysis of GDI1 expression in HAP-1 cells using anti-GDI1 antibody (Cat#64827, 1:2,000). Green, isotype control; red, GDI1.

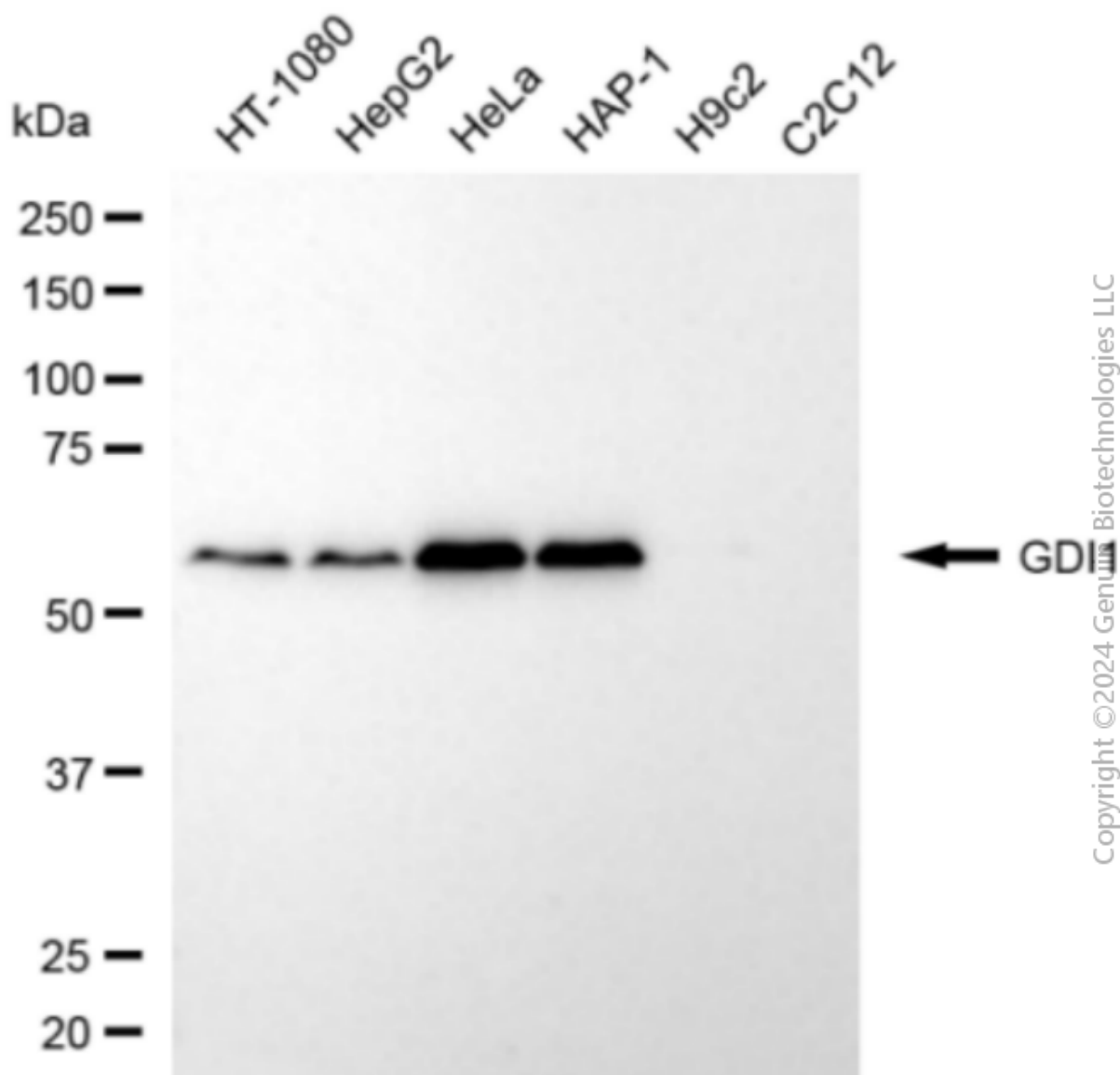
SUPPORT

SUPPORT@GENUINBIOTECH.COM
TEL: +1-540-855-7041

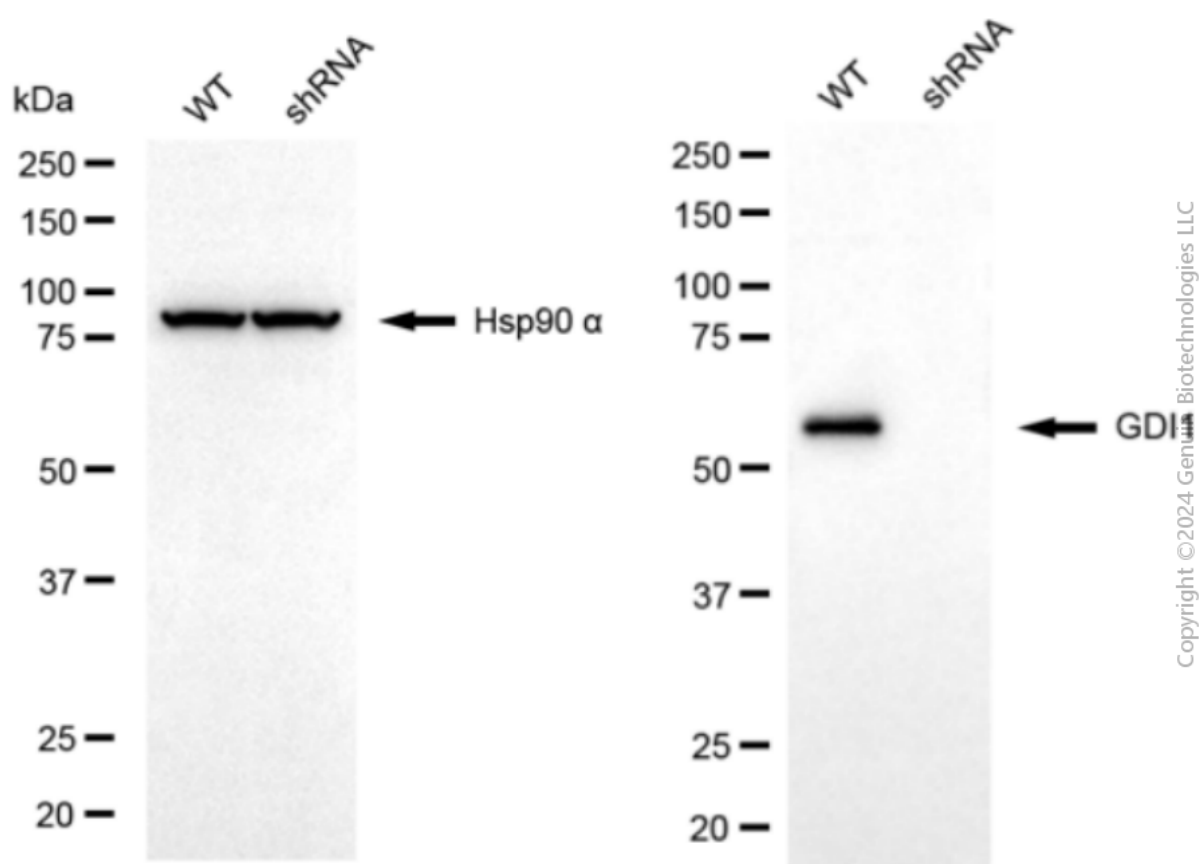
ORDERS

SALES@GENUINBIOTECH.COM
FAX: +1-540-855-7041

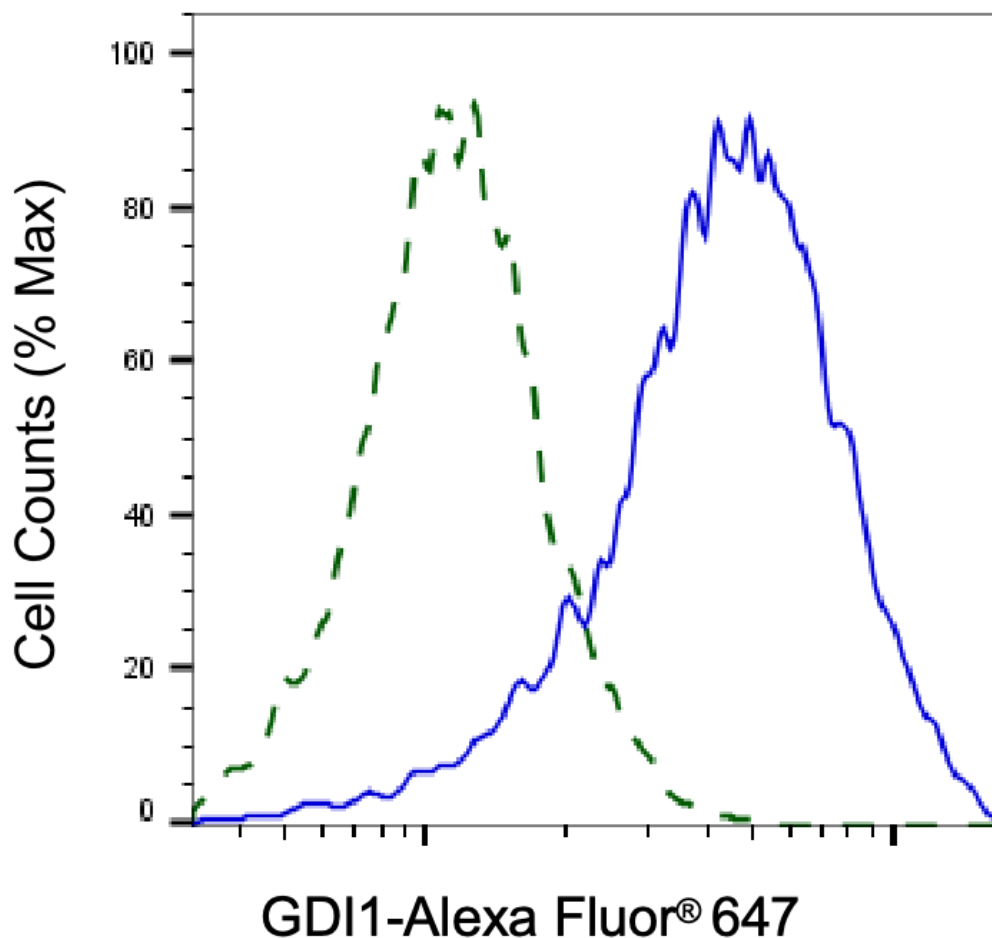
WWW.GENUINBIOTECH.COM



Western blotting analysis using anti-GDI1 antibody (Cat#64827). Total cell lysates (30 µg) from various cell lines were loaded and separated by SDS-PAGE. The blot was incubated with anti-GDI1 antibody (Cat#64827, 1:1,000) and HRP-conjugated goat anti-mouse secondary antibody (Cat#101, 1:20,000) respectively. Image was developed using NaQ™ ECL Substrate Kit (Cat#716).

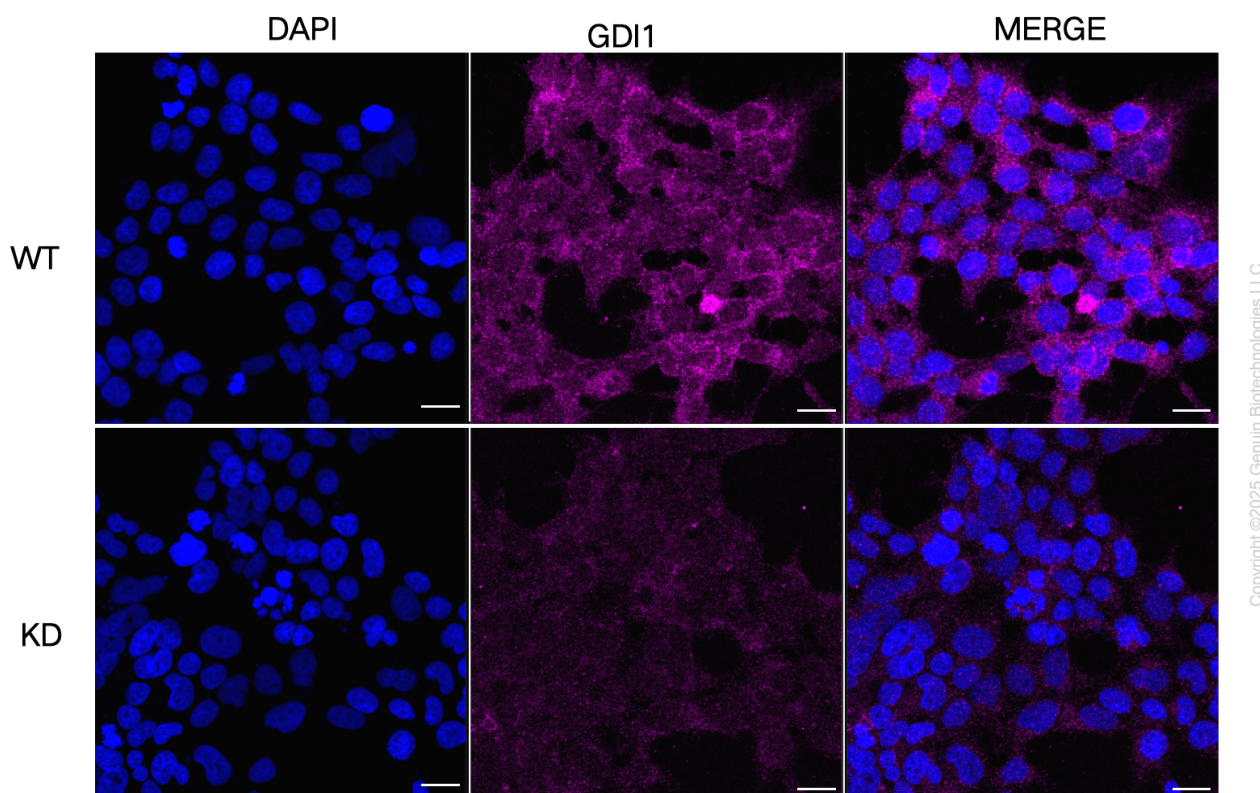


Western blotting analysis using anti-GDI1 antibody (Cat#64827). GDI1 expression in wild-type (WT) and GDI1 shRNA knockdown (KD) HeLa cells with 20 µg of total cell lysates. Hsp90 α serves as a loading control. The blot was incubated with anti-GDI1 antibody (Cat#64827, 1:1,000) and HRP-conjugated goat anti-mouse secondary antibody (Cat#101, 1:20,000) respectively. Image was developed using NaQ™ ECL Substrate Kit (Cat#716).



Copyright ©2025 Genuin Biotechnologies LLC

Validation of GDI1 knockdown using flow cytometry. Wild-type(WT, Blue) and knockdown(KD, Green) HeLa cells were stained with anti-GDI1 antibody (Cat#64827, 1:2,000) and analyzed using BD flow cytometer.



Immunocytochemical staining of HeLa cells using anti-GDI1 antibody (Cat#64827, 1:1,000), Top panel: wild-type (WT); Bottom panel: GDI1 shRNA knockdown (KD). Nuclei were stained blue with DAPI; Acyl-CoA dehydrogenase short chain was stained magenta with Alexa Fluor® 647. Scale bar, 20 μ m.