

KD-Validated Anti-Glutaredoxin 3 Mouse Monoclonal Antibody



Catalog #: 64828

Aliases

GLRX3; Glutaredoxin 3; PICOT; GLRX4; TXNL2; GRX3; GRX4; PKC-Interacting Cousin Of Thioredoxin; PKC-Theta-Interacting Protein; Thioredoxin-Like Protein 2; PKCq-Interacting Protein; Glutaredoxin 4; Glutaredoxin-3; BA500G10.4; Testicular Tissue Protein Li 75; Thioredoxin-Like 2; TXNL3

Background

Gene Name: GLRX3

NCBI Gene Entry: [10539](#)

UniProt Entry: [O76003](#)

Application Information

Molecular Weight: Predicted, 37 kDa; observed, 38 kDa

Clonality: Mouse monoclonal antibody

Clone ID: 24GB13145

Species Reactivity: Human

Applications Tested: Western blotting (WB), flow cytometry (FCM)

Immunogen

Recombinant protein of human GLRX3

Isotype

Mouse IgG2a

Storage Buffer

Supplied in PBS (pH 7.4) containing 50% glycerol, and 0.02% sodium azide.

Storage

Store at -20 °C for one year.

Recommended Dilutions

Western Blotting (WB): 1:1,000-1:2,500

Flow Cytometry (FCM): 1:2,000

Note: This product is for research use only.

SUPPORT

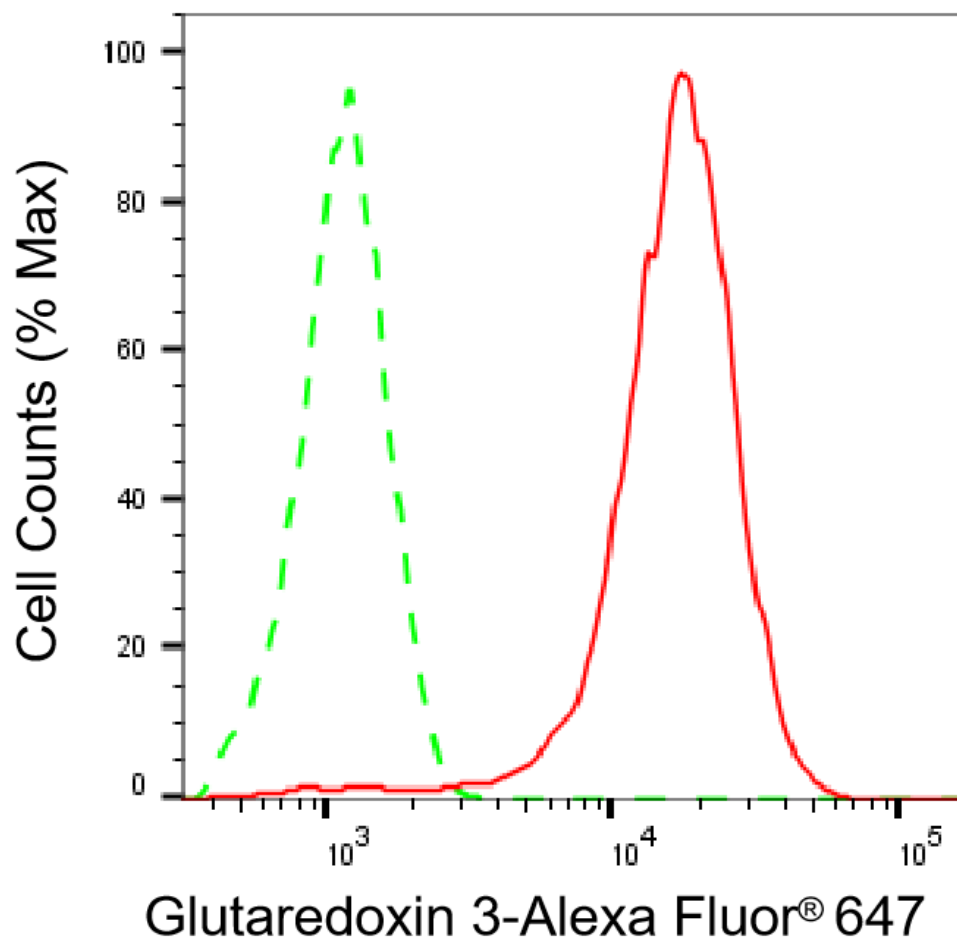
SUPPORT@GENUINBIOTECH.COM
TEL: +1-540-855-7041

ORDERS

SALES@GENUINBIOTECH.COM
FAX: +1-540-855-7041

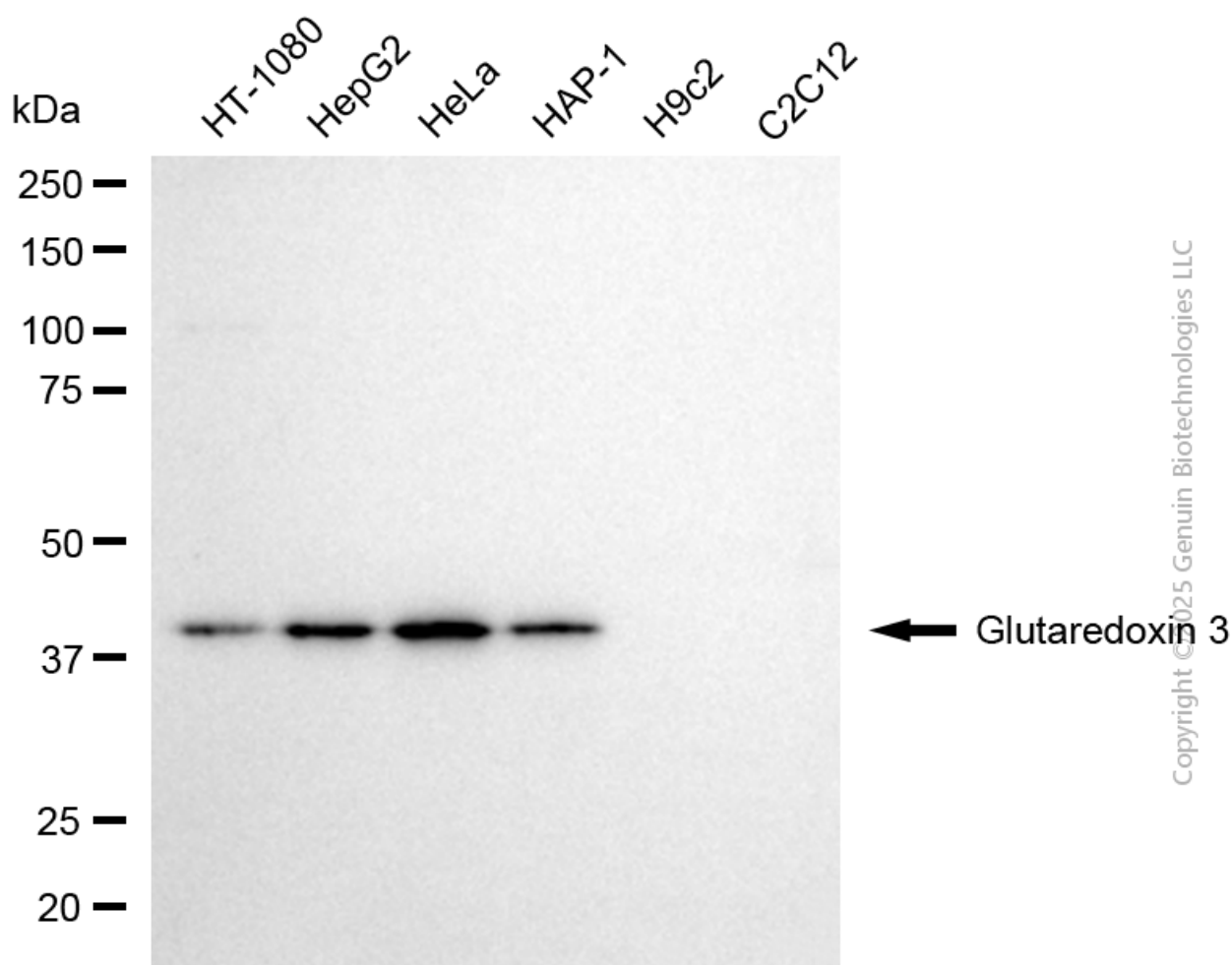
WWW.GENUINBIOTECH.COM

Validation Data

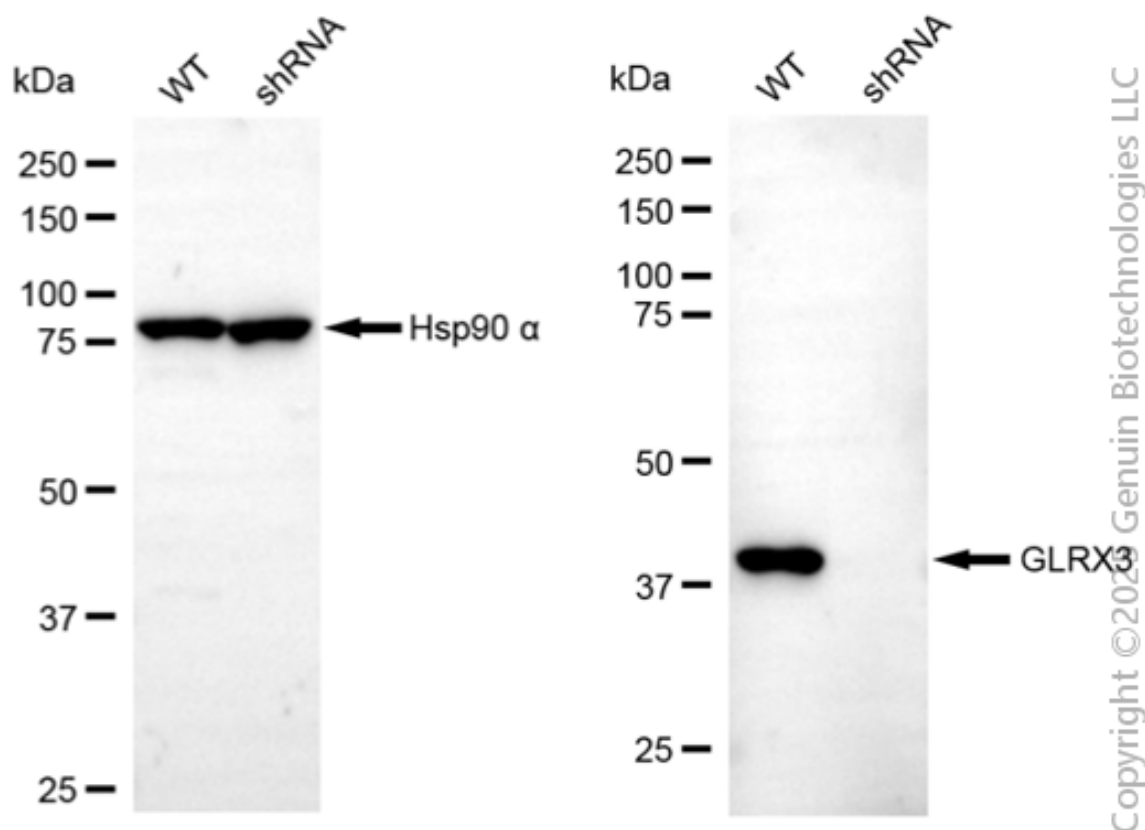


Copyright ©2025 Genuin Biotechnologies LLC

Flow cytometric analysis of Glutaredoxin 3 expression in HeLa cells using anti-Glutaredoxin 3 antibody (Cat#64828, 1:2,000). Green, isotype control; red, Glutaredoxin 3.



Western blotting analysis using anti-glutaredoxin 3 antibody (Cat#64828). Total cell lysates (30 µg) from various cell lines were loaded and separated by SDS-PAGE. The blot was incubated with anti-glutaredoxin 3 antibody (Cat#64828, 1:2,500) and HRP-conjugated goat anti-mouse secondary antibody (Cat#101, 1:20,000) respectively. Image was developed using NaQ™ ECL Substrate Kit (Cat#716).



Western blotting analysis using anti-glutaredoxin 3 antibody (Cat#64828). Glutaredoxin 3 expression in wild-type (WT) and glutaredoxin 3 (GLRX3) shRNA knockdown (KD) HeLa cells with 20 µg of total cell lysates. Hsp90 α serves as a loading control. The blot was incubated with anti-glutaredoxin 3 antibody (Cat#64828, 1:2,500) and HRP-conjugated goat anti-mouse secondary antibody (Cat#101, 1:20,000) respectively. Image was developed using FeQ™ ECL Substrate Kit (Cat#226).