

# KD-Validated Anti-Galactose Mutarotase Mouse Monoclonal Antibody



**Catalog #: 64831**

## Aliases

GALM; Galactose Mutarotase; Aldose 1-Epimerase; Aldose Mutarotase; Galactomutarotase; EC 5.1.3.3; Epididymis Secretory Sperm Binding Protein Li 63p; Galactose Enzyme Activator; HEL-S-63p; BLOCK25; GALAC4; GLAT; IBD1

## Background

Gene Name: GALM

NCBI Gene Entry: [130589](#)

UniProt Entry: [Q96C23](#)

## Application Information

Molecular Weight: Predicted, 38 kDa; observed, 36 kDa

Clonality: Mouse monoclonal antibody

Clone ID: 24GB13160

Species Reactivity: Human

Applications Tested: Western blotting (WB)

## Immunogen

Recombinant protein of human GALM

## Isotype

Mouse IgG1

## Storage Buffer

Supplied in PBS (pH 7.4) containing 50% glycerol, and 0.02% sodium azide.

## Storage

Store at -20 °C for one year.

## Recommended Dilutions

Western Blotting (WB): 1:500-1:2,500

**Note:** This product is for research use only.

## Validation Data

---

### SUPPORT

SUPPORT@GENUINBIOTECH.COM  
TEL: +1-540-855-7041

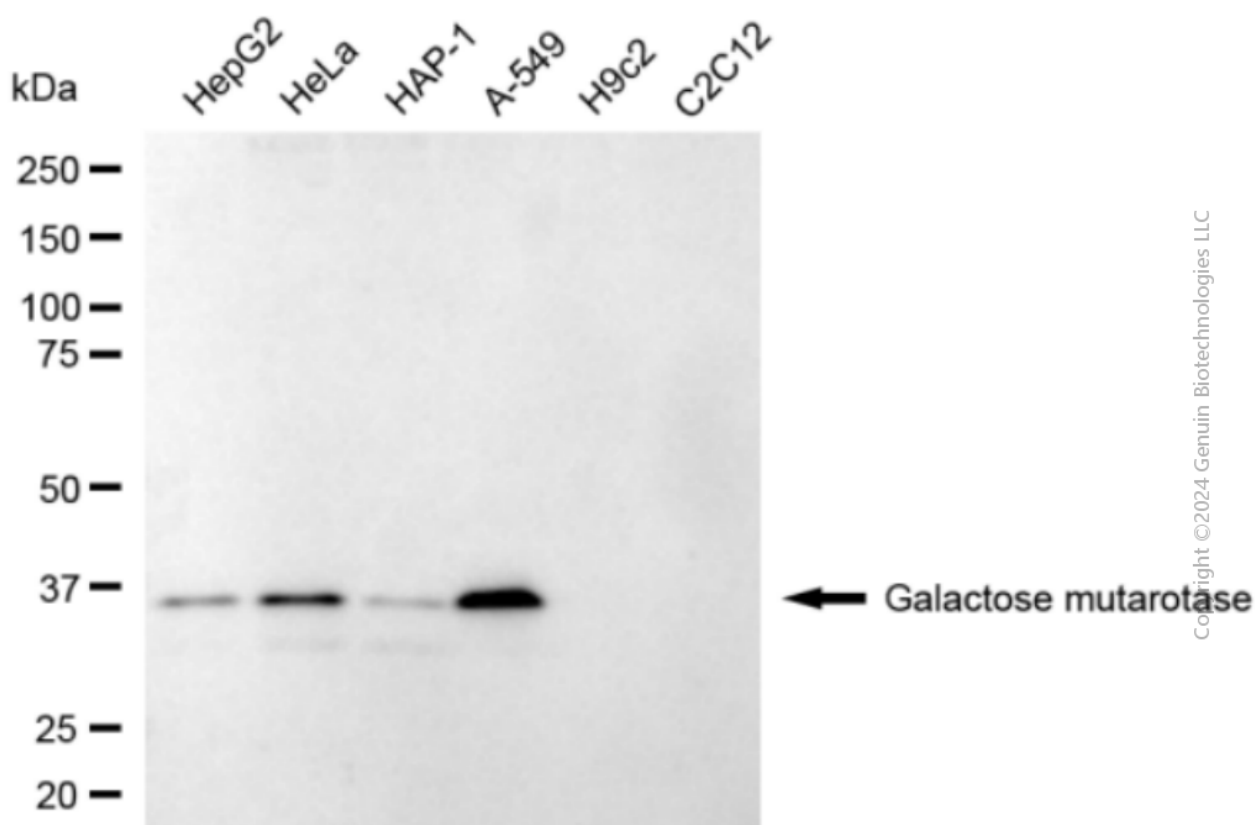
### ORDERS

SALES@GENUINBIOTECH.COM  
FAX: +1-540-855-7041

[WWW.GENUINBIOTECH.COM](http://WWW.GENUINBIOTECH.COM)

## KD-Validated Anti-Galactose Mutarotase Mouse Monoclonal Antibody

PAGE 2



Western blotting analysis using anti-galactose mutarotase antibody (Cat#64831). Total cell lysates (30 µg) from various cell lines were loaded and separated by SDS-PAGE. The blot was incubated with anti-galactose mutarotase antibody (Cat#64831, 1:2,500) and HRP-conjugated goat anti-mouse secondary antibody (Cat#101, 1:20,000) respectively. Image was developed using FeQ™ ECL Substrate Kit (Cat#226).

### SUPPORT

SUPPORT@GENUINBIOTECH.COM  
TEL: +1-540-855-7041

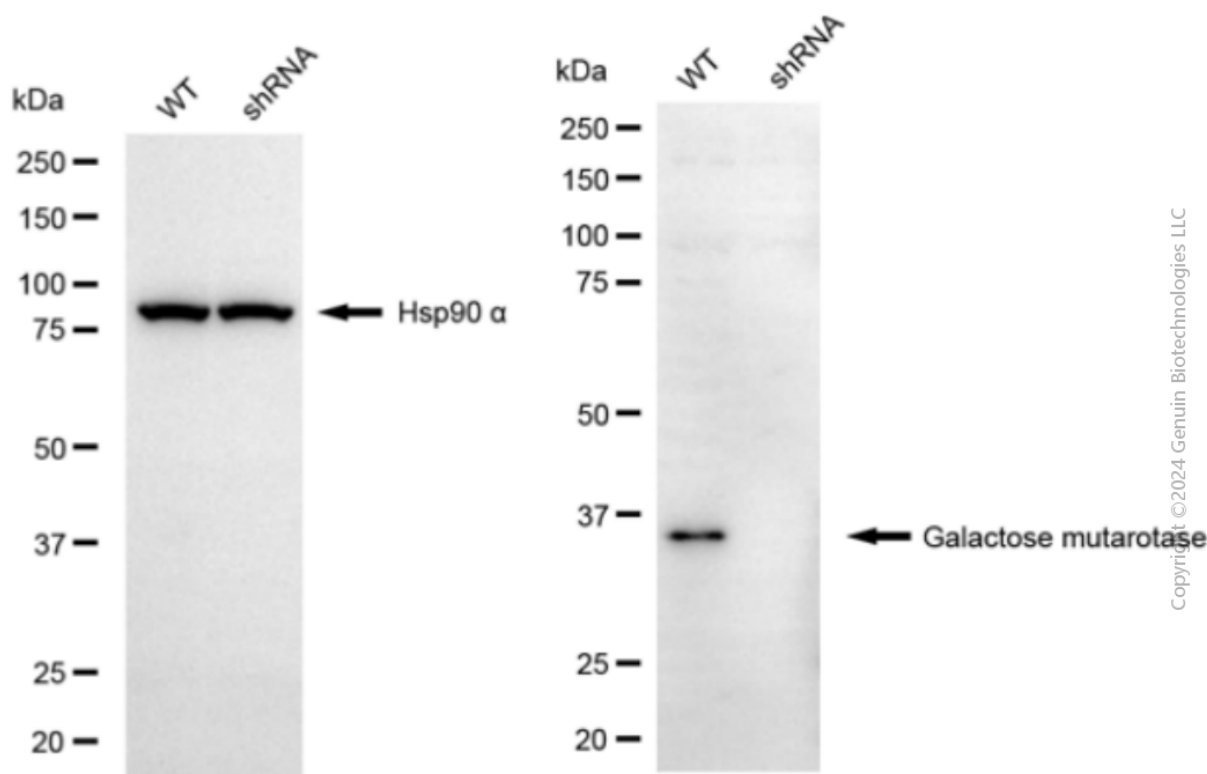
### ORDERS

SALES@GENUINBIOTECH.COM  
FAX: +1-540-855-7041

[WWW.GENUINBIOTECH.COM](http://WWW.GENUINBIOTECH.COM)

## KD-Validated Anti-Galactose Mutarotase Mouse Monoclonal Antibody

PAGE 3



Western blotting analysis using anti-galactose mutarotase antibody (Cat#64831). Galactose mutarotase expression in wild-type (WT) and galactose mutarotase (GALM) shRNA knockdown (KD) HeLa cells with 30  $\mu$ g of total cell lysates. Hsp90  $\alpha$  serves as a loading control. The blot was incubated with anti-galactose mutarotase antibody (Cat#64831, 1:1,000) and HRP-conjugated goat anti-mouse secondary antibody (Cat#101, 1:20,000) respectively. Image was developed using FeQ<sup>TM</sup> ECL Substrate Kit (Cat#226).

### SUPPORT

SUPPORT@GENUINBIOTECH.COM  
TEL: +1-540-855-7041

### ORDERS

SALES@GENUINBIOTECH.COM  
FAX: +1-540-855-7041

[WWW.GENUINBIOTECH.COM](http://WWW.GENUINBIOTECH.COM)