

# KD-Validated Anti-Sorting Nexin 9 Mouse Monoclonal Antibody



**Catalog #: 64839**

## Aliases

SNX9; Sorting Nexin 9; SH3PXD3A; SH3PX1; SDP1; SH3 And PX Domain-Containing Protein 3A; SH3 And PX Domain-Containing Protein 1; Sorting Nexin-9; Wiskott-Aldrich Syndrome Protein (WASP) Interactor Protein; Protein SDP1; WISP

## Background

Gene Name: SNX9

NCBI Gene Entry: [51429](#)

UniProt Entry: [Q9Y5X1](#)

## Application Information

Molecular Weight: Predicted, 67 kDa; observed, 74 kDa

Clonality: Mouse monoclonal antibody

Clone ID: 24GB13200

Species Reactivity: Human

Applications Tested: Western blotting (WB), flow cytometry (FCM), immunocytochemistry (IC)

## Immunogen

Recombinant protein of human SNX9

## Isotype

Mouse IgG2b

## Storage Buffer

Supplied in PBS (pH 7.4) containing 50% glycerol, and 0.02% sodium azide.

## Storage

Store at -20 °C for one year.

## Recommended Dilutions

Western Blotting (WB): 1:500-1:2,500

Flow Cytometry (FCM): 1:2,000

Immunocytochemistry (IC): 1:100-1:1,000

**Note:** This product is for research use only.

---

### SUPPORT

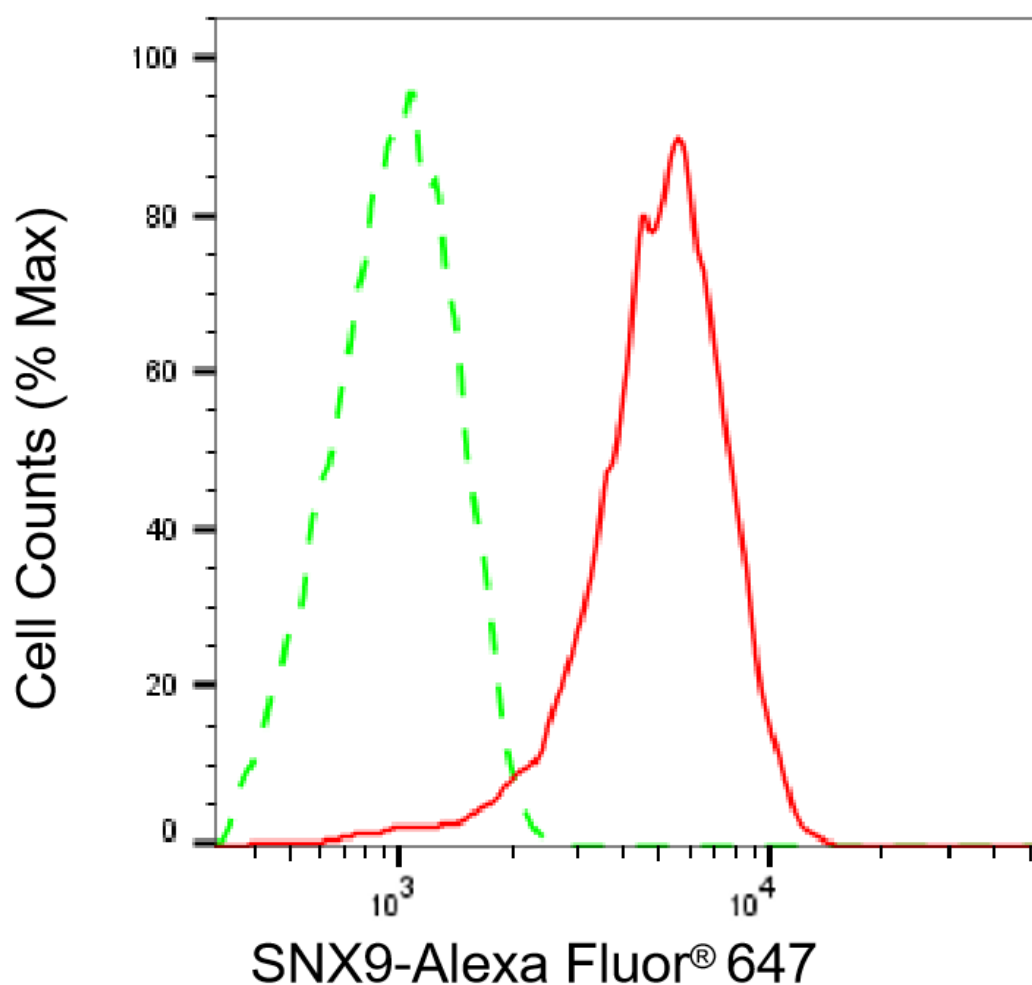
SUPPORT@GENUINBIOTECH.COM  
TEL: +1-540-855-7041

### ORDERS

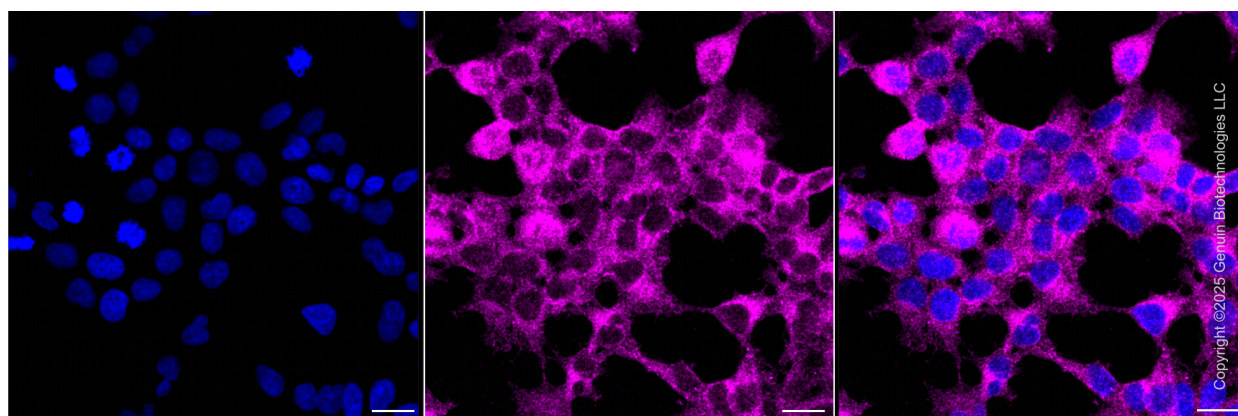
SALES@GENUINBIOTECH.COM  
FAX: +1-540-855-7041

[WWW.GENUINBIOTECH.COM](http://WWW.GENUINBIOTECH.COM)

**Validation Data**



Flow cytometric analysis of SNX9 expression in HeLa cells using anti-SNX9 antibody (Cat#64839, 1:2,000). Green, isotype control; red, SNX9.



Immunocytochemical staining of HeLa cells with anti-SNX9 associated protein antibody

**SUPPORT**

SUPPORT@GENUINBIOTECH.COM  
TEL: +1-540-855-7041

**ORDERS**

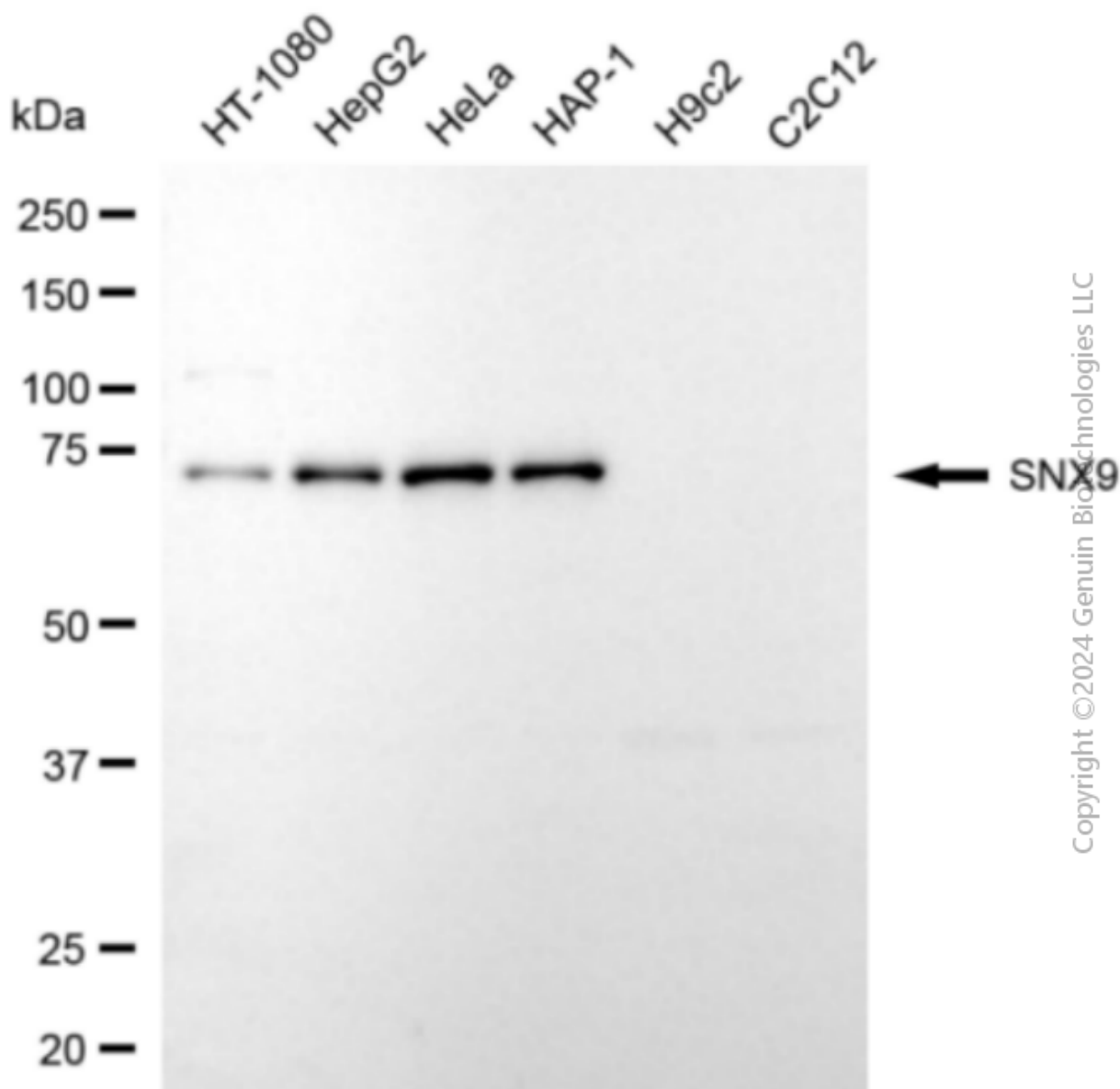
SALES@GENUINBIOTECH.COM  
FAX: +1-540-855-7041

**WWW.GENUINBIOTECH.COM**

## KD-Validated Anti-Sorting Nexin 9 Mouse Monoclonal Antibody

PAGE 3

(Cat#64839, 1:1,000) . Nuclei were stained blue with DAPI; SNX9 associated protein was stained magenta with Alexa Fluor® 647. Images were taken using Leica stellaris 5. Protein abundance based on laser Intensity and smart gain: Low. Scale bar, 20  $\mu$ m.



Western blotting analysis using anti-SNX9 antibody (Cat#64839). Total cell lysates (30  $\mu$ g) from various cell lines were loaded and separated by SDS-PAGE. The blot was incubated with anti-SNX9 antibody (Cat#64839, 1:2,500) and HRP-conjugated goat anti-mouse secondary antibody (Cat#101, 1:20,000) respectively. Image was developed using FeQ™ ECL Substrate Kit (Cat#226).

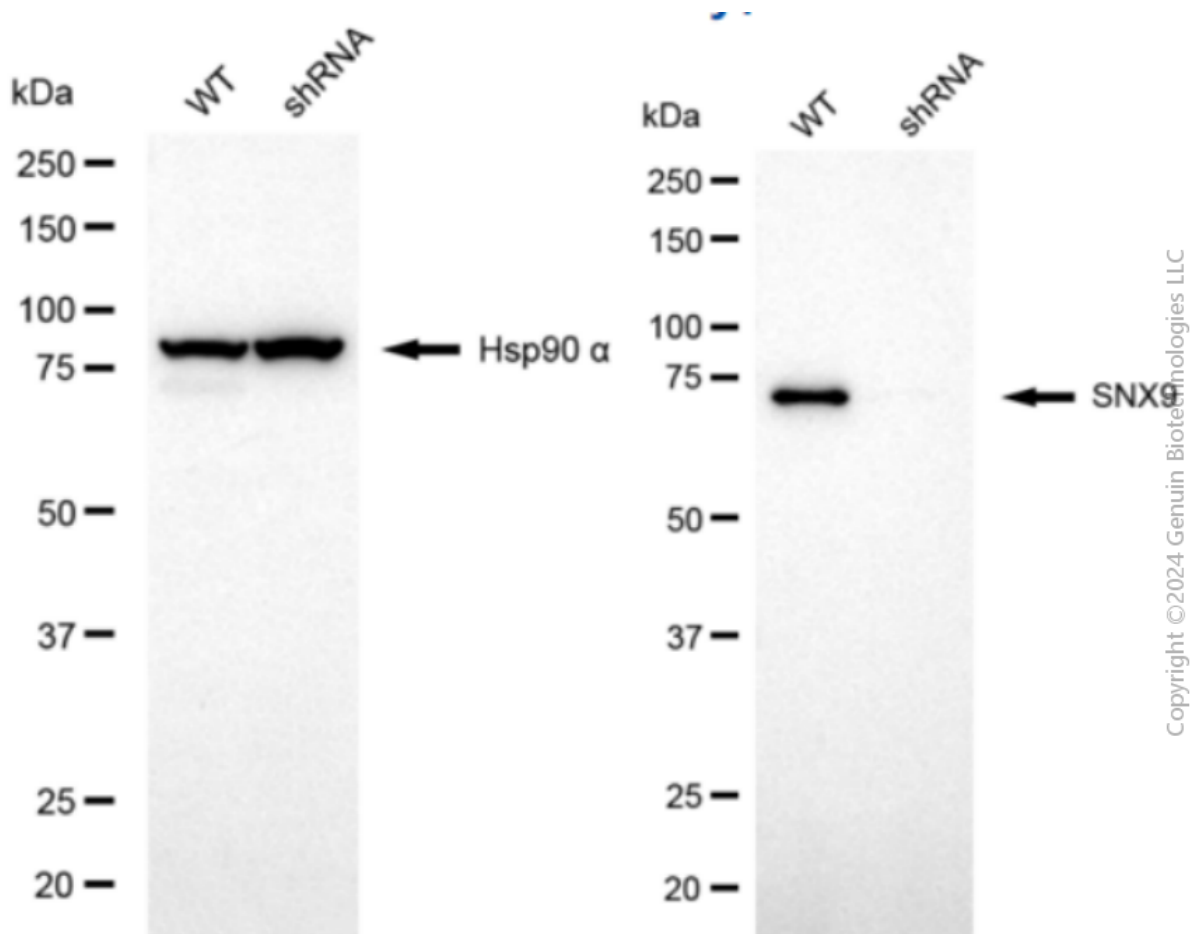
### SUPPORT

SUPPORT@GENUINBIOTECH.COM  
TEL: +1-540-855-7041

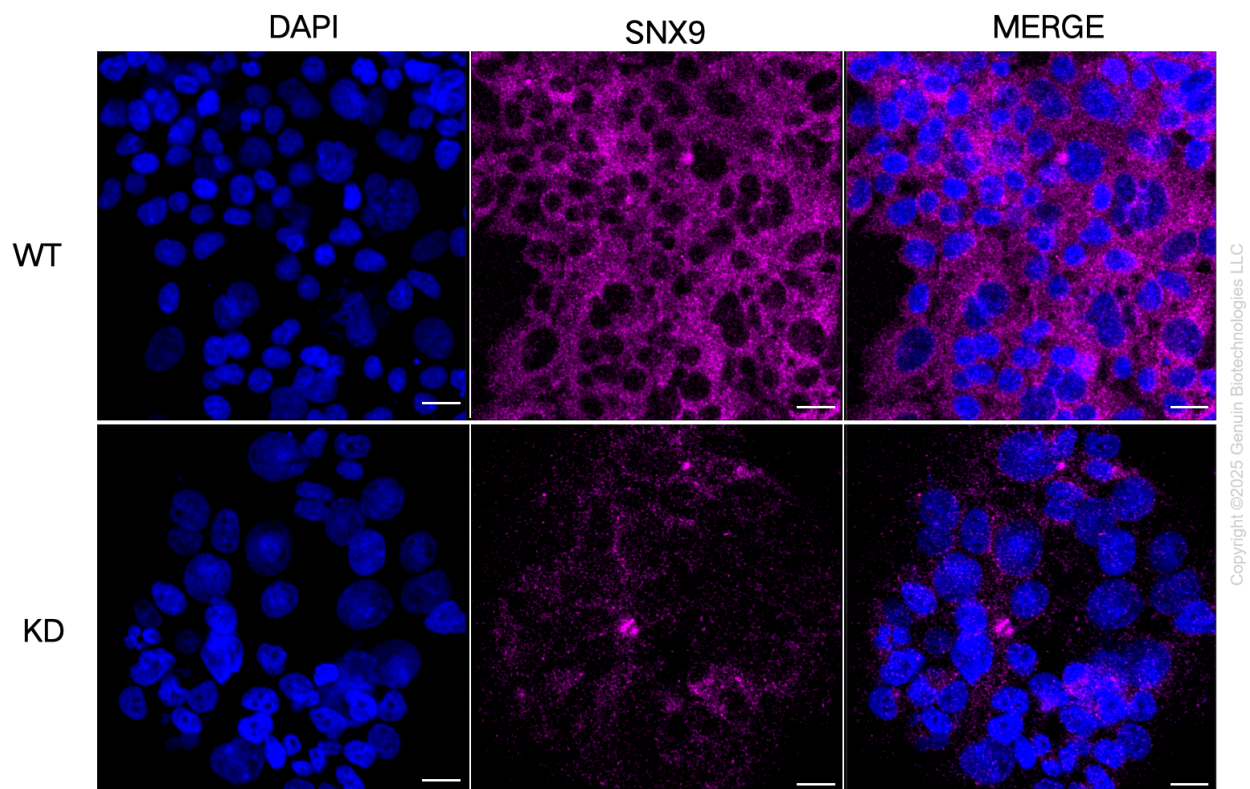
### ORDERS

SALES@GENUINBIOTECH.COM  
FAX: +1-540-855-7041

WWW.GENUINBIOTECH.COM



Western blotting analysis using anti-SNX9 antibody (Cat#64839). SNX9 expression in wild-type (WT) and SNX9 shRNA knockdown (KD) HeLa cells with 20 µg of total cell lysates. Hsp90 α serves as a loading control. The blot was incubated with anti-SNX9 antibody (Cat#64839, 1:2,500) and HRP-conjugated goat anti-mouse secondary antibody (Cat#101, 1:20,000) respectively. Image was developed using FeQ™ ECL Substrate Kit (Cat#226).



Immunocytochemical staining of HeLa cells using anti-SNX9 antibody (Cat#64839, 1:1,000), Top panel: wild-type (WT); Bottom panel: SNX9 shRNA knockdown (KD). Nuclei were stained blue with DAPI; SNX9 was stained magenta with Alexa Fluor® 647. Scale bar, 20  $\mu$ m.