

KD-Validated Anti-MSI1 Mouse Monoclonal Antibody



Catalog #: 64843

Aliases

MSI1; Musashi RNA Binding Protein 1; RNA-Binding Protein Musashi Homolog 1; Musashi-1; Musashi (Drosophila) Homolog 1; Musashi Homolog 1 (Drosophila); Musashi1

Background

Gene Name: MSI1

NCBI Gene Entry: [4440](#)

UniProt Entry: [O43347](#)

Application Information

Molecular Weight: Predicted, 39 kDa; observed, 36 kDa

Clonality: Mouse monoclonal antibody

Clone ID: 24GB13220

Species Reactivity: Human

Applications Tested: Western blotting (WB)

Immunogen

Recombinant protein of human MSI1

Isotype

Mouse IgG2a

Storage Buffer

Supplied in PBS (pH 7.4) containing 50% glycerol, and 0.02% sodium azide.

Storage

Store at -20 °C for one year.

Recommended Dilutions

Western Blotting (WB): 1:500-1:2,500

Note: This product is for research use only.

Validation Data

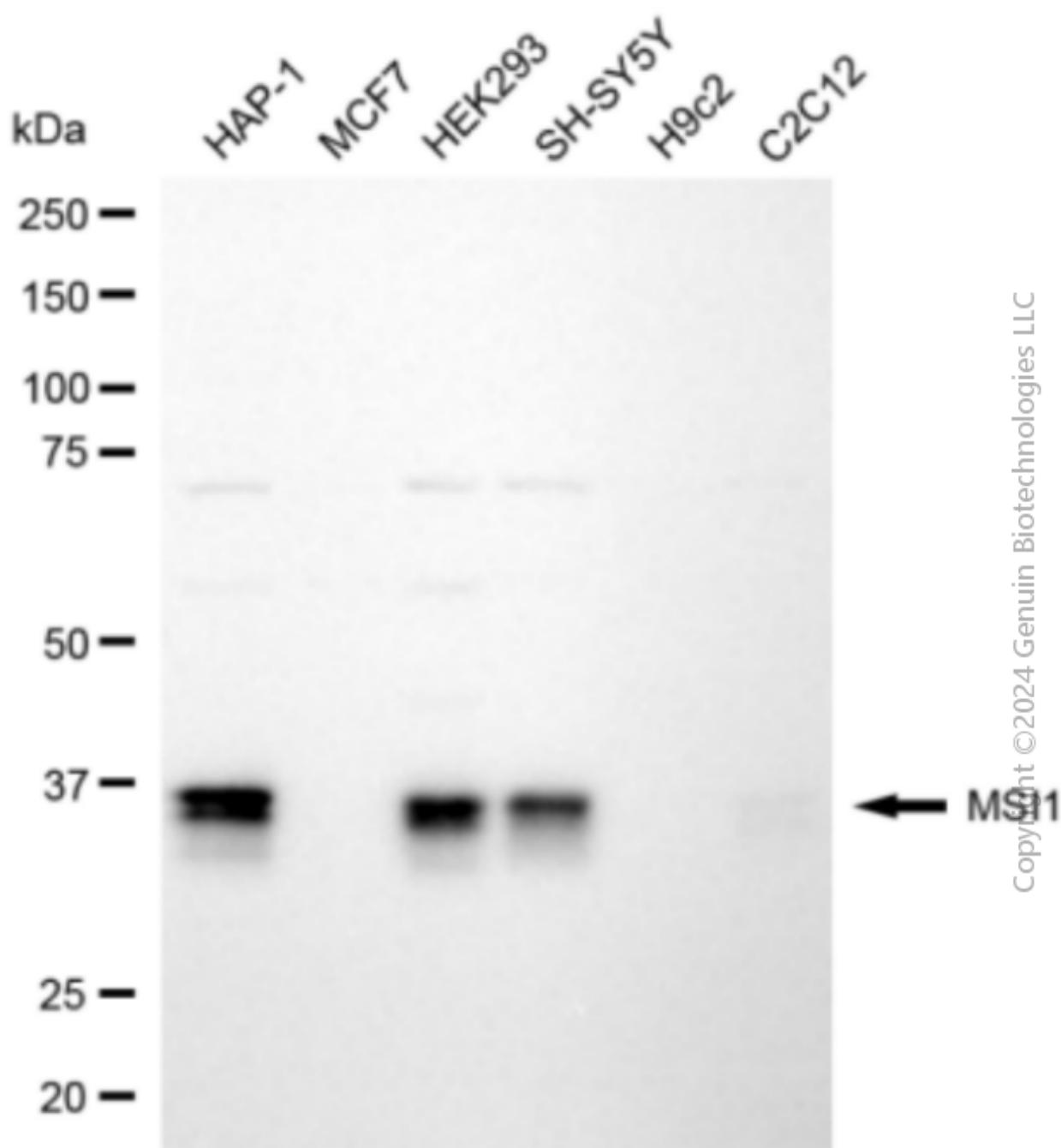
SUPPORT

SUPPORT@GENUINBIOTECH.COM
TEL: +1-540-855-7041

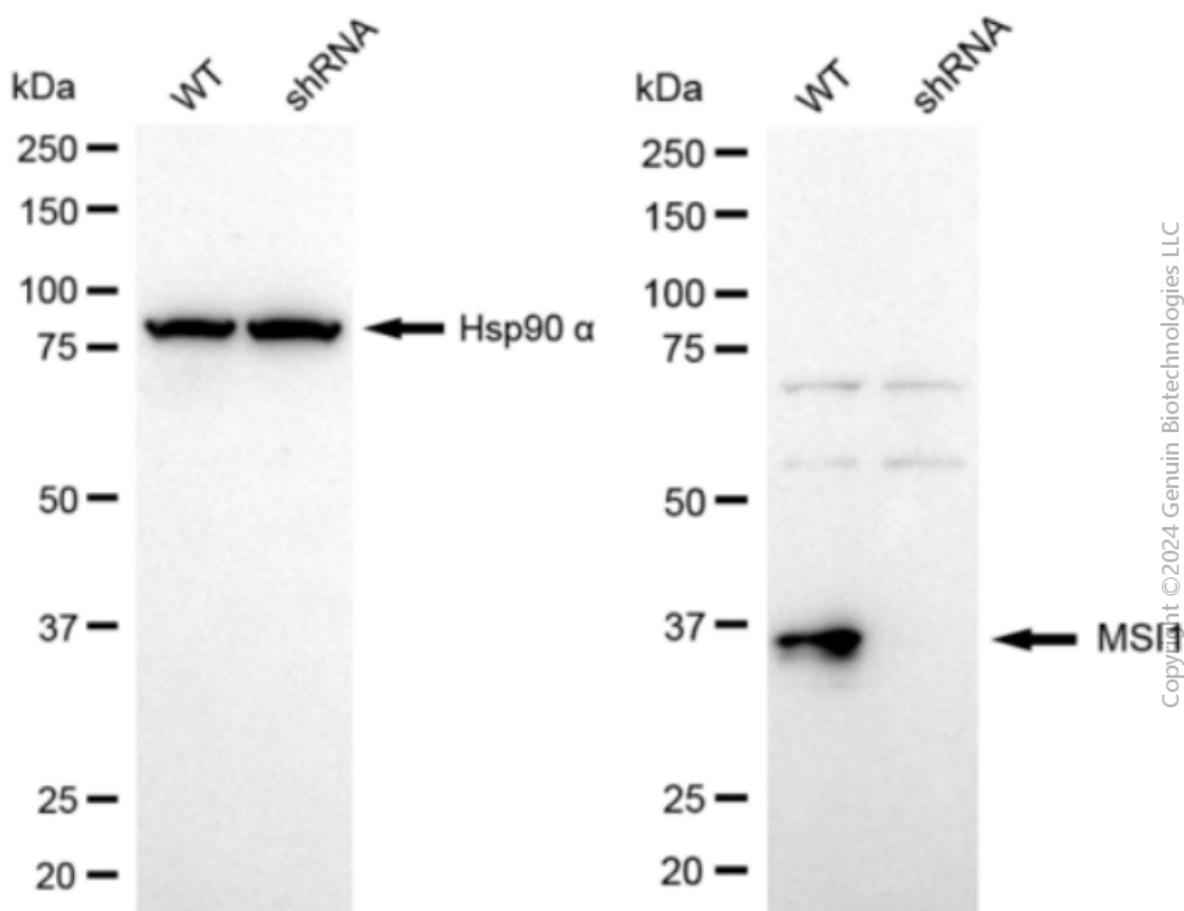
ORDERS

SALES@GENUINBIOTECH.COM
FAX: +1-540-855-7041

WWW.GENUINBIOTECH.COM



Western blotting analysis using anti-MSI1 antibody (Cat#64843). Total cell lysates (30 µg) from various cell lines were loaded and separated by SDS-PAGE. The blot was incubated with anti-MSI1 antibody (Cat#64843, 1:2,500) and HRP-conjugated goat anti-mouse secondary antibody (Cat#101, 1:20,000) respectively. Image was developed using FeQ™ ECL Substrate Kit (Cat#226).



Western blotting analysis using anti-MSI1 antibody (Cat#64843). MSI1 expression in wild-type (WT) and MSI1 shRNA knockdown (KD) HeLa cells with 20 µg of total cell lysates. Hsp90 α serves as a loading control. The blot was incubated with anti-MSI1 antibody (Cat#64843, 1:2,500) and HRP-conjugated goat anti-mouse secondary antibody (Cat#101, 1:20,000) respectively. Image was developed using FeQ™ ECL Substrate Kit (Cat#226).