

# KD-Validated Anti-Sirtuin 5 Mouse Monoclonal Antibody



**Catalog #: 64846**

## Aliases

SIRT5; Sirtuin 5; NAD-Dependent Protein Deacetylase Sirtuin-5, Mitochondrial; SIR2L5; Sirtuin (Silent Mating Type Information Regulation 2 Homolog) 5 (S. Cerevisiae); Sirtuin (Silent Mating Type Information Regulation 2, S.Cerevisiae, Homolog) 5; NAD-Dependent Lysine Demalonylase And Desuccinylase Sirtuin-5, Mitochondrial; Silent Mating Type Information Regulation 2, S.Cerevisiae, Homolog 5; NAD-Dependent Deacetylase Sirtuin-5; Regulatory Protein SIR2 Homolog 5; SIR2-Like Protein 5; Sirtuin Type 5; Sir2-Like 5; EC 2.3.1.-

## Background

Gene Name: SIRT5

NCBI Gene Entry: [23408](#)

UniProt Entry: [Q9NXA8](#)

## Application Information

Molecular Weight: Predicted, 34 kDa; observed, 30 kDa

Clonality: Mouse monoclonal antibody

Clone ID: 24GB13235

Species Reactivity: Human

Applications Tested: Western blotting (WB), flow cytometry (FCM), immunocytochemistry (IC)

## Immunogen

Recombinant protein of human SIRT5

## Isotype

Mouse IgG1

## Storage Buffer

Supplied in PBS (pH 7.4) containing 50% glycerol, and 0.02% sodium azide.

## Storage

Store at -20 °C for one year.

## Recommended Dilutions

Western Blotting (WB): 1:500-1:2,500

Immunohistochemistry (IHC): 1:100-1:1,000

Flow Cytometry (FCM) : 1:2,000

---

### SUPPORT

SUPPORT@GENUINBIOTECH.COM  
TEL: +1-540-855-7041

### ORDERS

SALES@GENUINBIOTECH.COM  
FAX: +1-540-855-7041

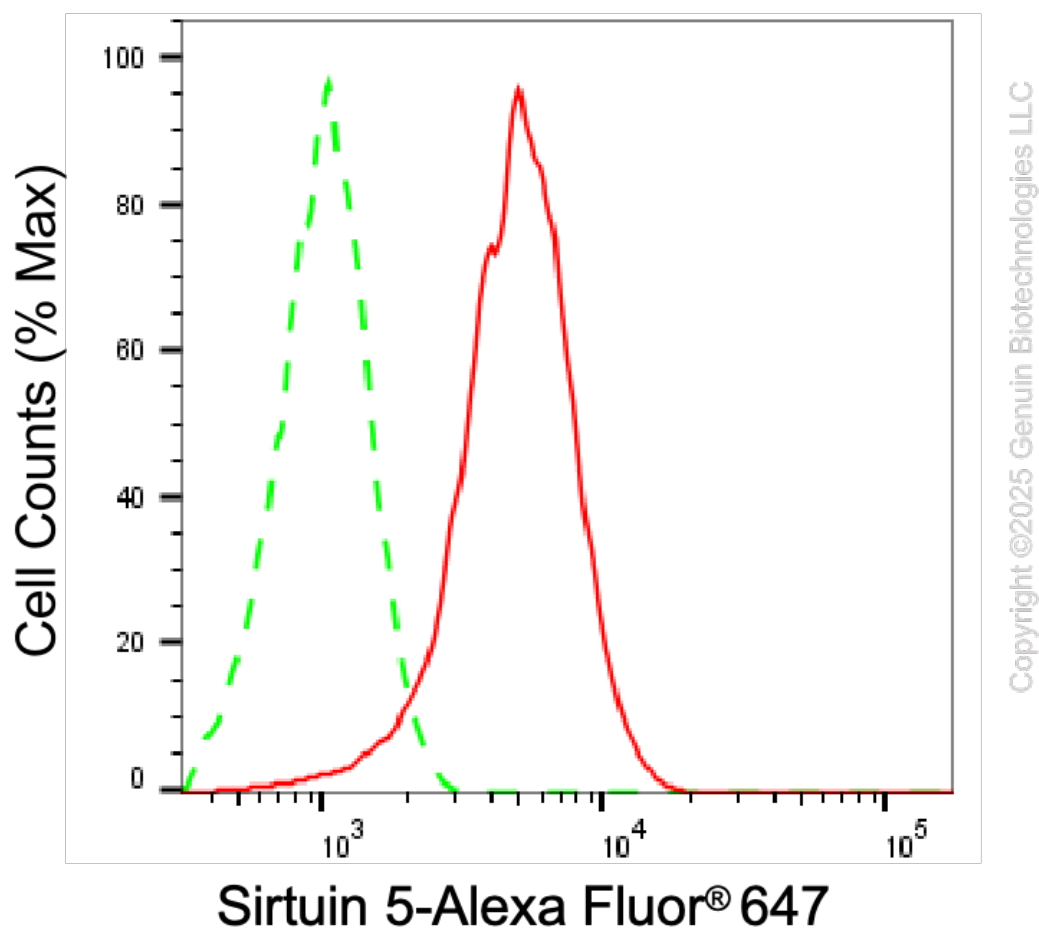
[WWW.GENUINBIOTECH.COM](http://WWW.GENUINBIOTECH.COM)

# KD-Validated Anti-Sirtuin 5 Mouse Monoclonal Antibody

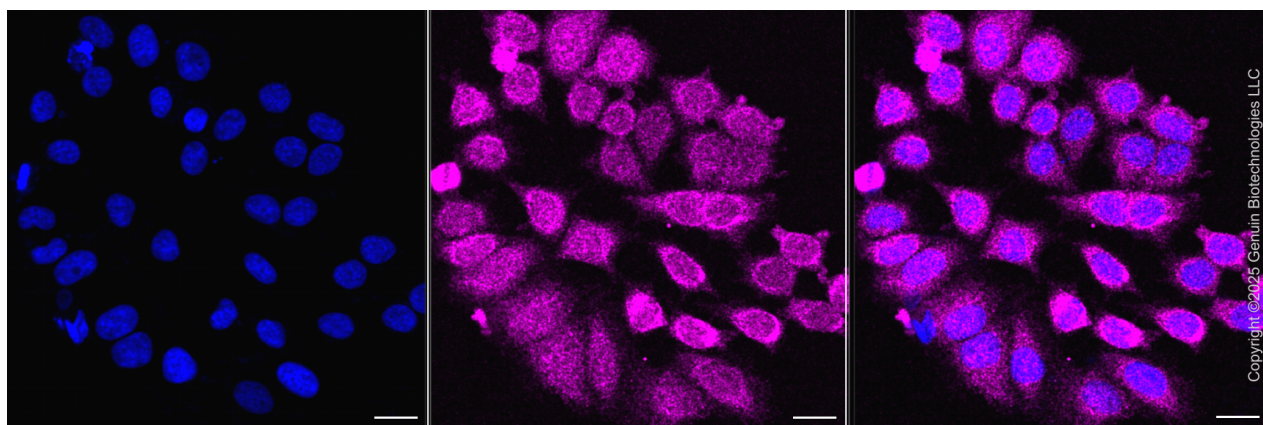
PAGE 2

**Note:** This product is for research use only.

## Validation Data



Flow cytometric analysis of Sirtuin 5 expression in HepG2 cells using anti-Sirtuin 5 antibody (Cat#64846, 1:2,000). Green, isotype control; red, Sirtuin 5.



### SUPPORT

SUPPORT@GENUINBIOTECH.COM  
TEL: +1-540-855-7041

### ORDERS

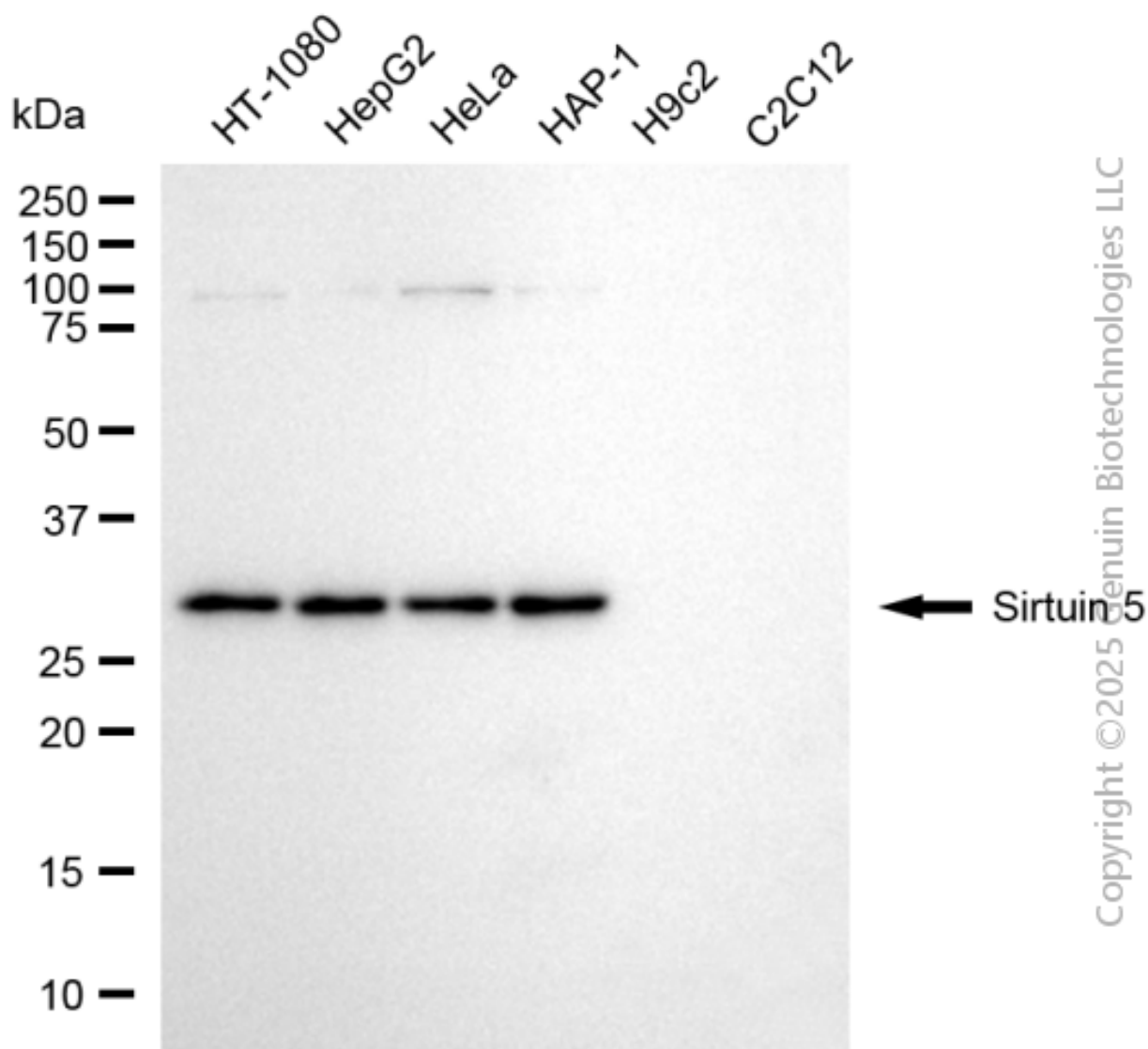
SALES@GENUINBIOTECH.COM  
FAX: +1-540-855-7041

WWW.GENUINBIOTECH.COM

## KD-Validated Anti-Sirtuin 5 Mouse Monoclonal Antibody

PAGE 3

Immunocytochemical staining of HepG2 cells with anti-Sirtuin 5 associated protein antibody (Cat#64846, 1:1,000). Nuclei were stained blue with DAPI; Sirtuin 5 associated protein was stained magenta with Alexa Fluor® 647. Images were taken using Leica stellaris 5. Protein abundance based on laser Intensity and smart gain: Medium. Scale bar, 20  $\mu$ m.



Western blotting analysis using anti-sirtuin 5 antibody (Cat#64846). Total cell lysates (30  $\mu$ g) from various cell lines were loaded and separated by SDS-PAGE. The blot was incubated with anti-sirtuin 5 antibody (Cat#64846, 1:2,500) and HRP-conjugated goat anti-mouse secondary antibody (Cat#101, 1:20,000) respectively. Image was developed using FeQ™ ECL Substrate Kit (Cat#226).

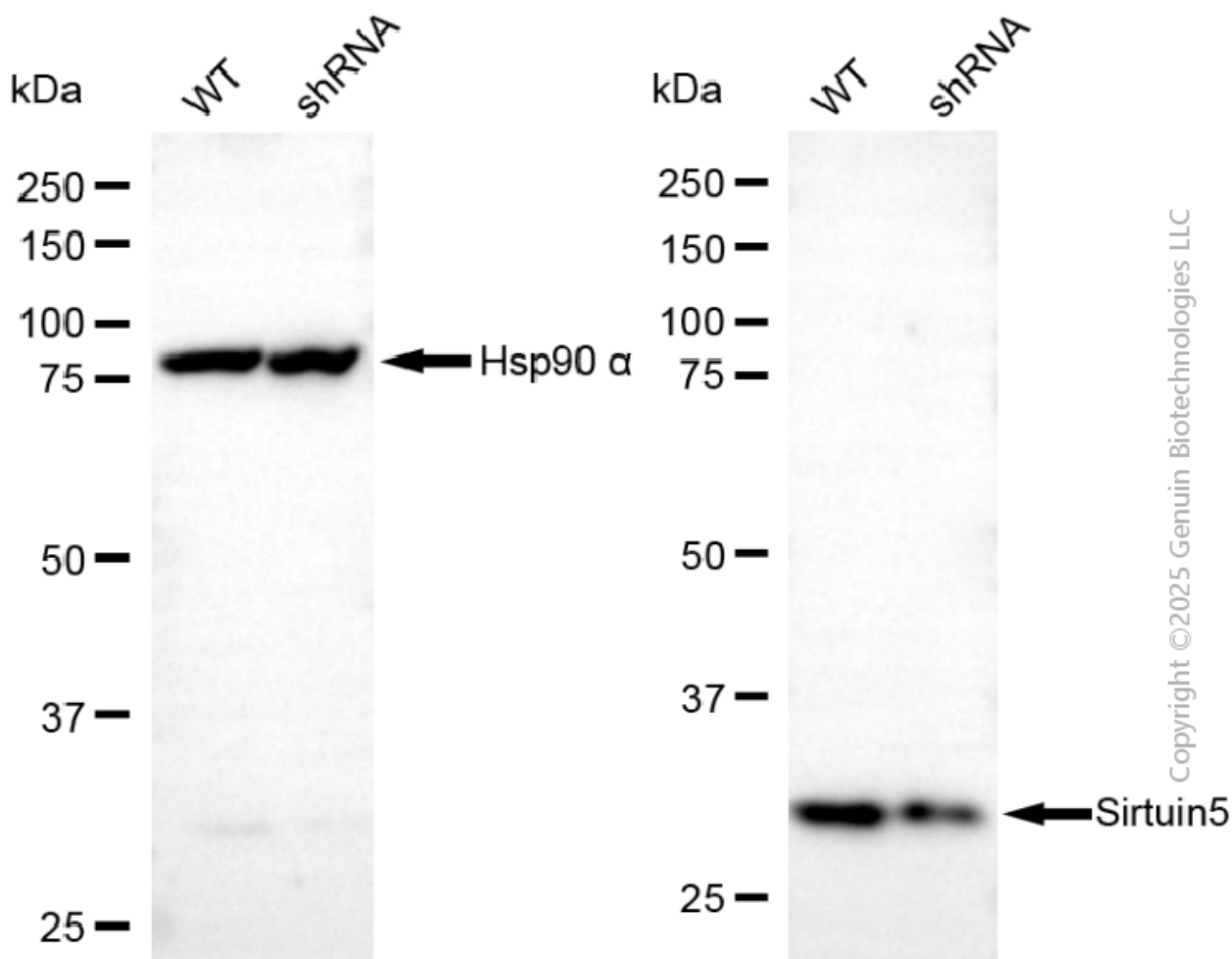
### SUPPORT

SUPPORT@GENUINBIOTECH.COM  
TEL: +1-540-855-7041

### ORDERS

SALES@GENUINBIOTECH.COM  
FAX: +1-540-855-7041

WWW.GENUINBIOTECH.COM



Western blotting analysis using anti-sirtuin 5 antibody (Cat#64846). Sirtuin 5 expression in wild-type (WT) and sirtuin 5 (SIRT5) shRNA knockdown (KD) HeLa cells with 20 µg of total cell lysates. Hsp90 α serves as a loading control. The blot was incubated with anti-sirtuin 5 antibody (Cat#64846, 1:2,500) and HRP-conjugated goat anti-mouse secondary antibody (Cat#101, 1:20,000) respectively. Image was developed using NaQ™ ECL Substrate Kit (Cat#716).