

# KD-Validated Anti-NDUFB10 Mouse Monoclonal Antibody



**Catalog #: 64850**

## Aliases

NDUFB10; NADH:Ubiquinone Oxidoreductase Subunit B10; PDSW; NADH Dehydrogenase (Ubiquinone) 1 Beta Subcomplex, 10, 22kDa; NADH Dehydrogenase [Ubiquinone] 1 Beta Subcomplex Subunit 10; NADH-Ubiquinone Oxidoreductase PDSW Subunit; Complex I PDSW Subunit; Complex I-PDSW; CI-PDSW; NADH Dehydrogenase (Ubiquinone) 1 Beta Subcomplex, 10 (22kD, PDSW); NADH Ubiquinone Oxidoreductase PDSW Subunit (RH 16p13.3); MC1DN35

## Background

Gene Name: NDUFB10

NCBI Gene Entry: [4716](#)

UniProt Entry: [O96000](#)

## Application Information

Molecular Weight: Predicted, 21 kDa; observed, 21 kDa

Clonality: Mouse monoclonal antibody

Clone ID: 24GB13255

Species Reactivity: Human, mouse, rat

Applications Tested: Western blotting (WB), flow cytometry (FCM), immunocytochemistry (IC)

## Immunogen

Recombinant protein of human NDUFB10

## Isotype

Mouse IgG1

## Storage Buffer

Supplied in PBS (pH 7.4) containing 50% glycerol, and 0.02% sodium azide.

## Storage

Store at -20 °C for one year.

## Recommended Dilutions

Western Blotting (WB): 1:400-1:2,000

Immunocytochemistry (IC): 1:100-1:1,000

Flow Cytometry (FCM): 1:2,000

---

### SUPPORT

SUPPORT@GENUINBIOTECH.COM  
TEL: +1-540-855-7041

### ORDERS

SALES@GENUINBIOTECH.COM  
FAX: +1-540-855-7041

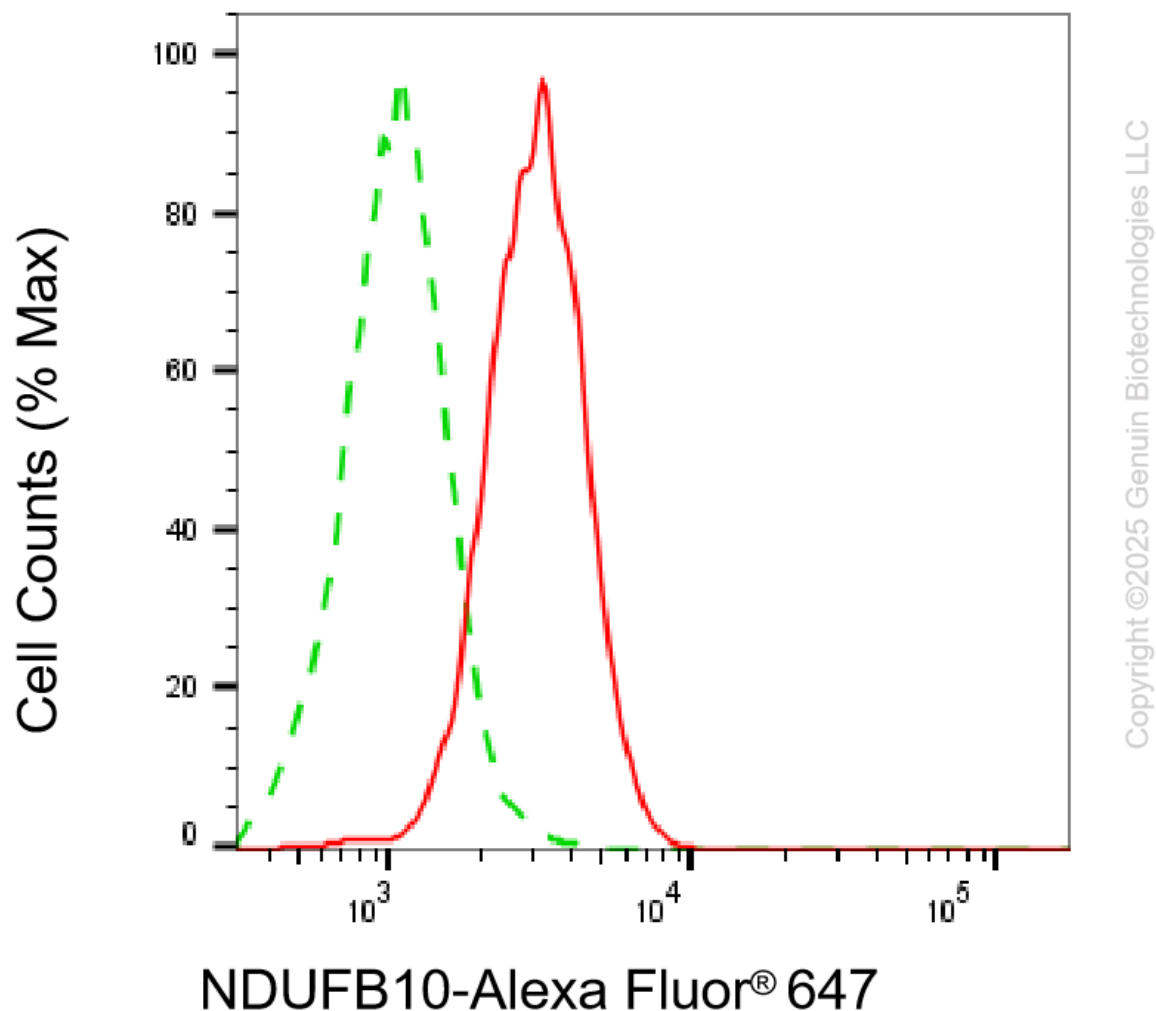
[WWW.GENUINBIOTECH.COM](http://WWW.GENUINBIOTECH.COM)

## KD-Validated Anti-NDUFB10 Mouse Monoclonal Antibody

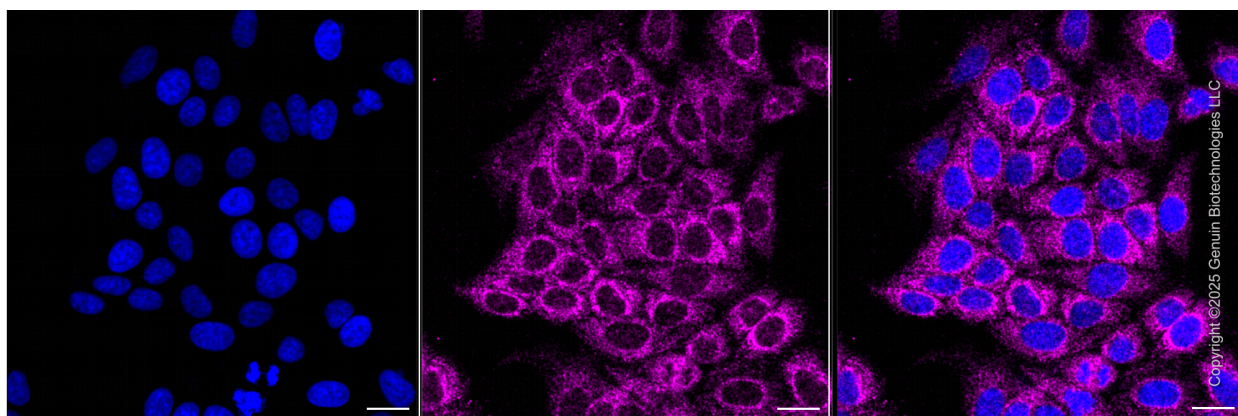
PAGE 2

**Note:** This product is for research use only.

### Validation Data



Flow cytometric analysis of NDUFB10 expression in HepG2 cells using anti-NDUFB10 antibody (Cat#64850, 1:1,000). Green, isotype control; red, NDUFB10.



#### SUPPORT

SUPPORT@GENUINBIOTECH.COM  
TEL: +1-540-855-7041

#### ORDERS

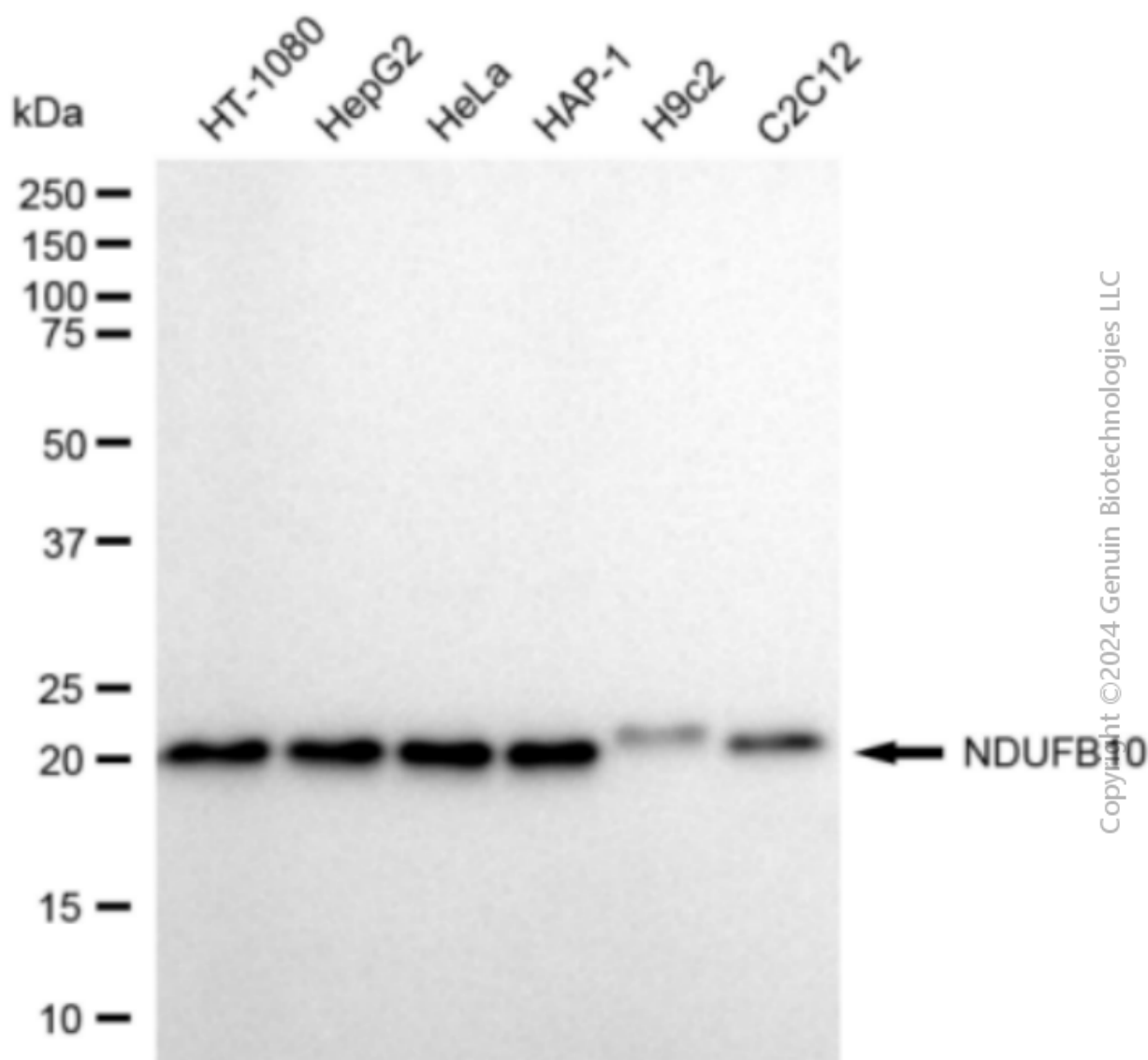
SALES@GENUINBIOTECH.COM  
FAX: +1-540-855-7041

WWW.GENUINBIOTECH.COM

## KD-Validated Anti-NDUFB10 Mouse Monoclonal Antibody

PAGE 3

Immunocytochemical staining of HepG2 cells with anti-NDUFB10 associated protein antibody (Cat#64850, 1:1,000). Nuclei were stained blue with DAPI; NDUFB10 associated protein was stained magenta with Alexa Fluor® 647. Images were taken using Leica stellaris 5. Protein abundance based on laser Intensity and smart gain: Low. Scale bar, 20  $\mu$ m.



Western blotting analysis using anti-NDUFB10 antibody (Cat#64850). Total cell lysates (30  $\mu$ g) from various cell lines were loaded and separated by SDS-PAGE. The blot was incubated with anti-NDUFB10 antibody (Cat#64850, 1:2,000) and HRP-conjugated goat anti-mouse secondary antibody (Cat#101, 1:20,000) respectively. Image was developed using NaQ™ ECL Substrate Kit (Cat#716).

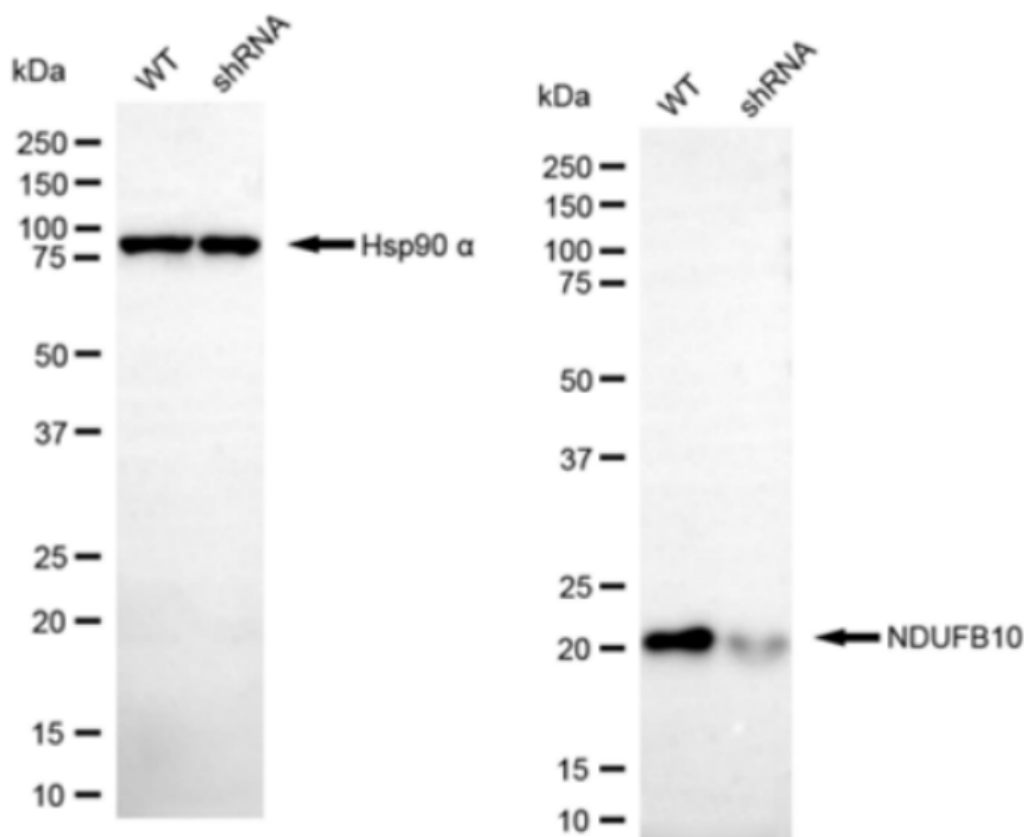
### SUPPORT

SUPPORT@GENUINBIOTECH.COM  
TEL: +1-540-855-7041

### ORDERS

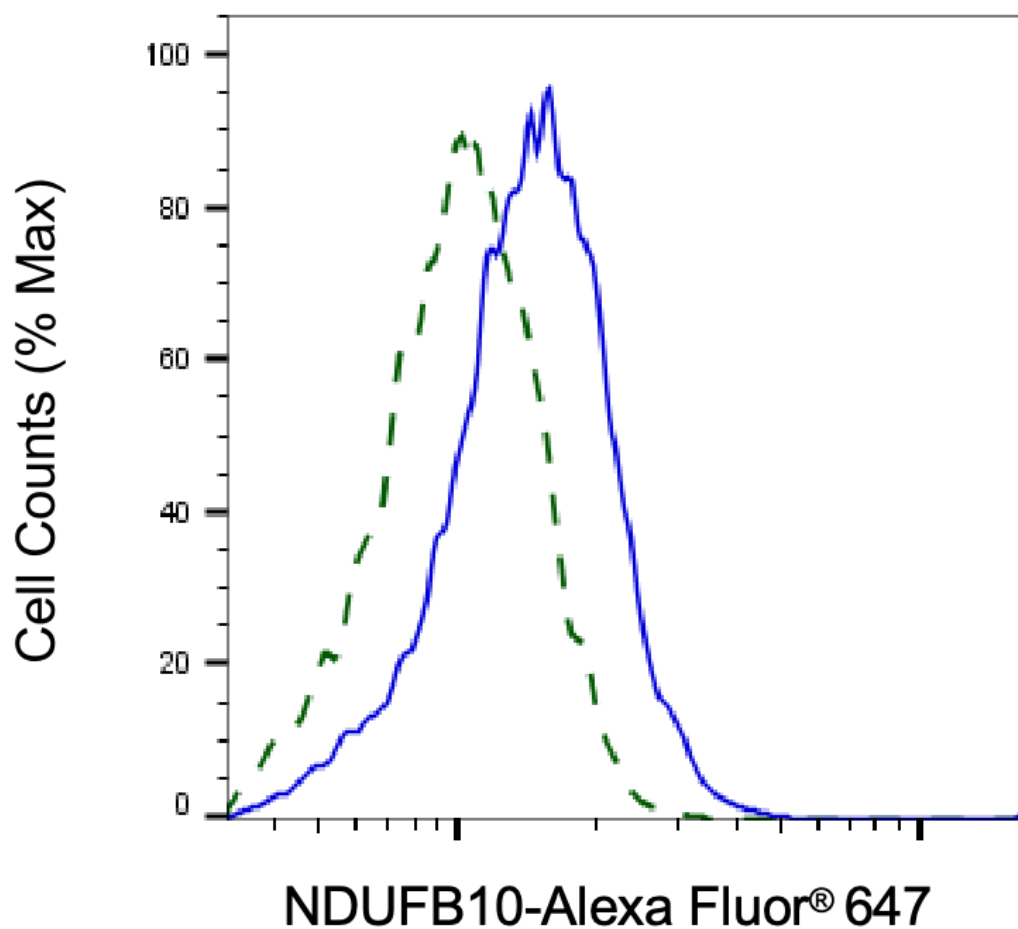
SALES@GENUINBIOTECH.COM  
FAX: +1-540-855-7041

[WWW.GENUINBIOTECH.COM](http://WWW.GENUINBIOTECH.COM)



Copyright ©2024 Genuin Biotechnologies LLC

Western blotting analysis using anti-NDUFB10 antibody (Cat#64850). NDUFB10 expression in wild type (WT) and NDUFB10 shRNA knockdown (KD) HeLa cells with 20  $\mu$ g of total cell lysates. Hsp90  $\alpha$  serves as a loading control. The blot was incubated with anti-NDUFB10 antibody (Cat#64850, 1:2,000) and HRP-conjugated goat anti-mouse secondary antibody (Cat#101, 1:20,000) respectively. Image was developed using FeQ™ ECL Substrate Kit (Cat#226).



Copyright ©2025 Genuin Biotechnologies LLC

Validation of NDUFB10 knockdown using flow cytometry. Wild-type(WT, Blue) and knockdown(KD, Green) HeLa cells were stained with anti-NDUFB10 antibody (Cat#64850, 1:2,000) and analyzed using BD flow cytometer.