

KD-Validated Anti-MRPL11 Mouse Monoclonal Antibody



Catalog #: 64851

Aliases

MRPL11; Mitochondrial Ribosomal Protein L11; UL11m; 39S Ribosomal Protein L11, Mitochondrial; Large Ribosomal Subunit Protein UL11m; MRP-L11; Mitochondrial Large Ribosomal Subunit Protein UL11m; CGI-113; L11MT; L11mt

Background

Gene Name: MRPL11

NCBI Gene Entry: [65003](#)

UniProt Entry: [Q9Y3B7](#)

Application Information

Molecular Weight: Predicted, 21 kDa; observed, 19 kDa

Clonality: Mouse monoclonal antibody

Clone ID: 24GB13260

Species Reactivity: Human, mouse, rat

Applications Tested: Western blotting (WB), flow cytometry (FCM), immunocytochemistry (IC)

Immunogen

Recombinant protein of human MRPL11

Isotype

Mouse IgG1

Storage Buffer

Supplied in PBS (pH 7.4) containing 50% glycerol, and 0.02% sodium azide.

Storage

Store at -20 °C for one year.

Recommended Dilutions

Western Blotting (WB): 1:500-1:2,500

Immunocytochemistry (IC): 1:100-1:1,000

Flow Cytometry (FCM): 1:2,000

Note: This product is for research use only.

SUPPORT

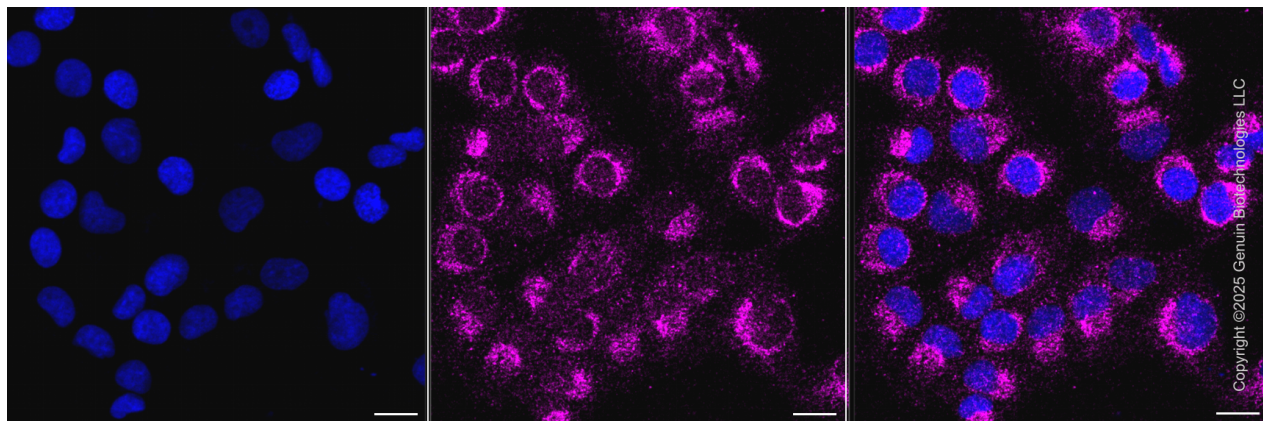
SUPPORT@GENUINBIOTECH.COM
TEL: +1-540-855-7041

ORDERS

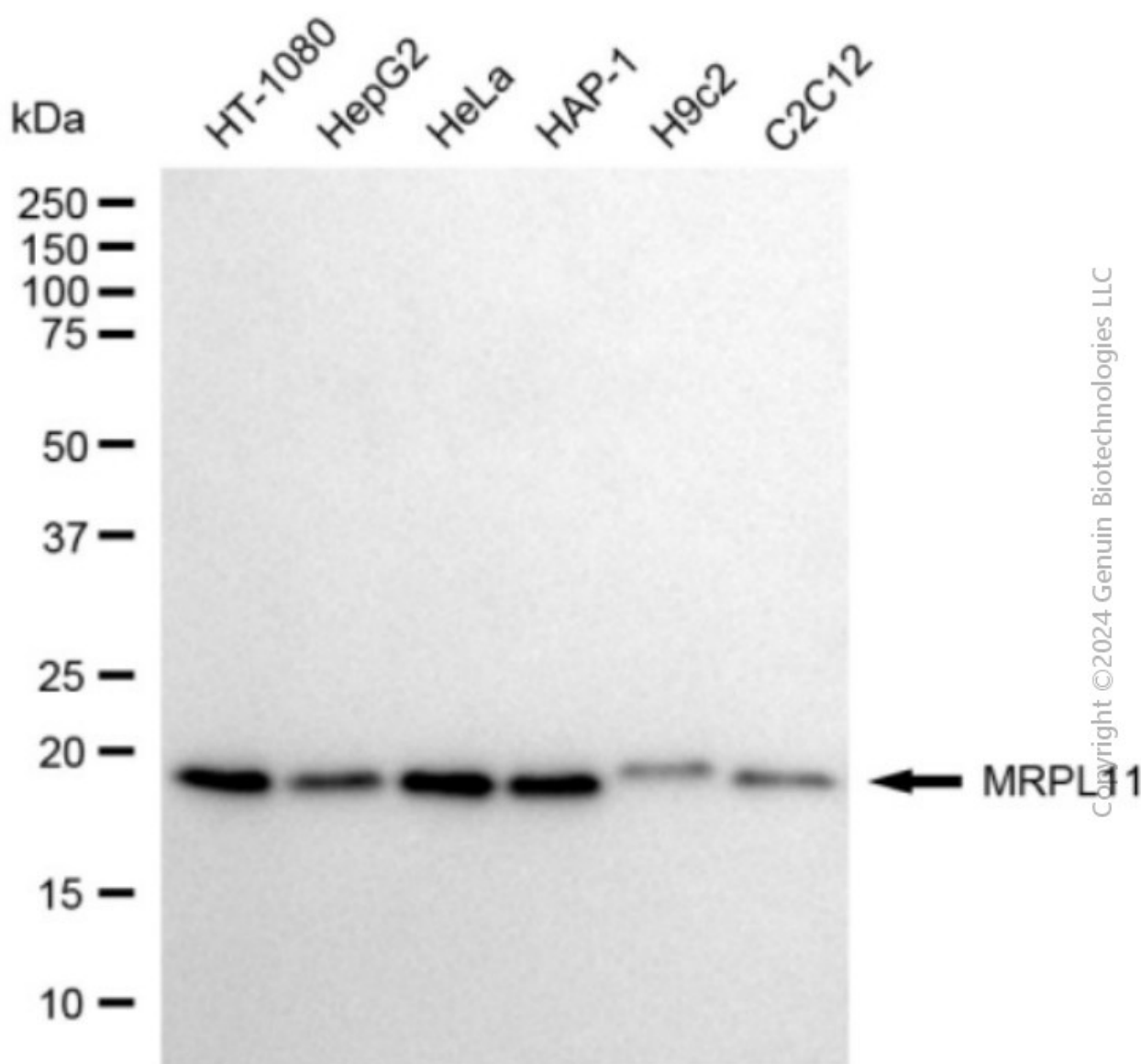
SALES@GENUINBIOTECH.COM
FAX: +1-540-855-7041

WWW.GENUINBIOTECH.COM

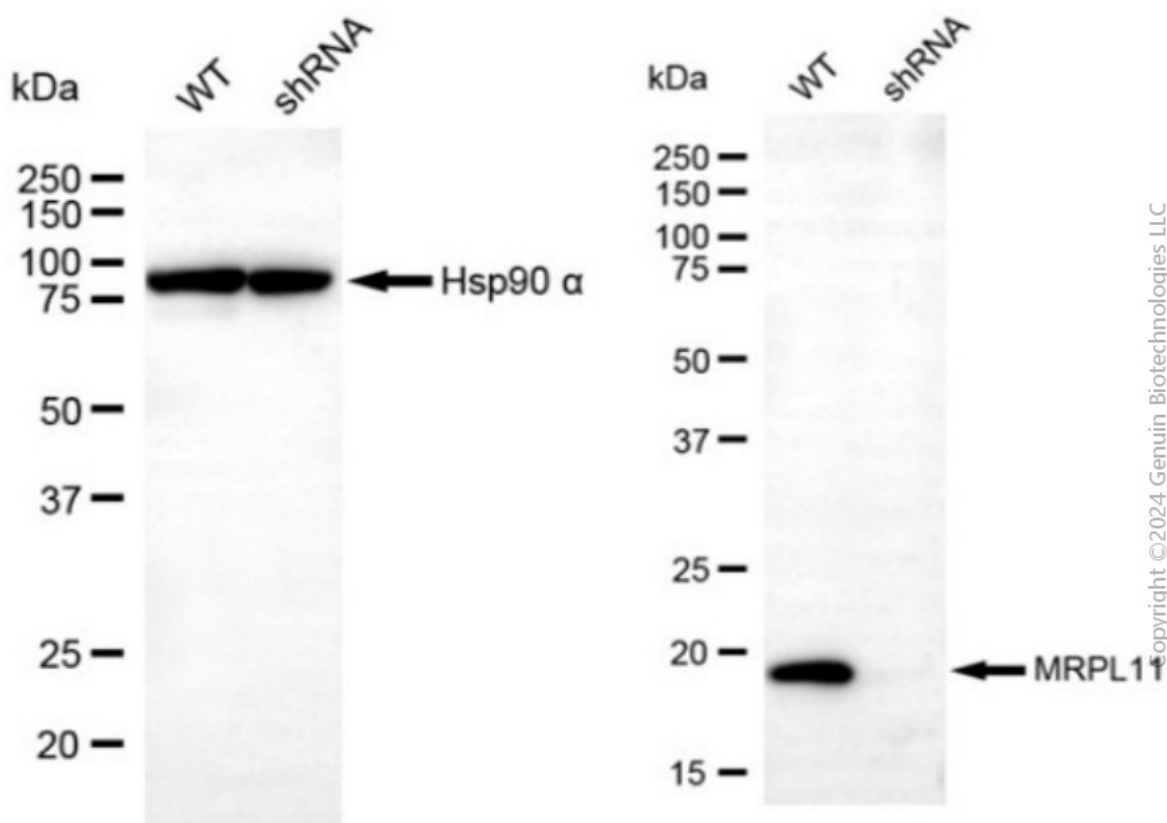
Validation Data



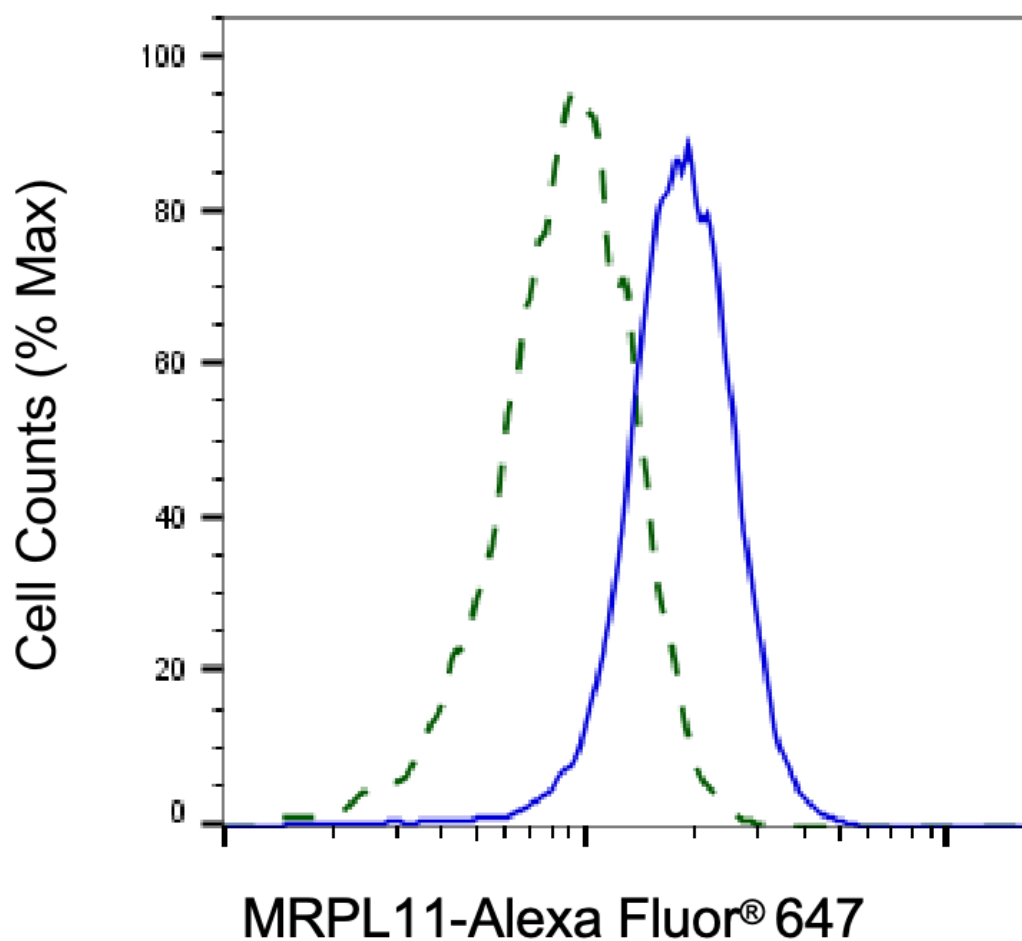
Immunocytochemical staining of HepG2 cells with anti-MRPL11 associated protein antibody (Cat#64851, 1:1,000) . Nuclei were stained blue with DAPI; MRPL11 associated protein was stained magenta with Alexa Fluor® 647. Images were taken using Leica stellaris 5. Protein abundance based on laser Intensity and smart gain: Low. Scale bar, 20 μ m.



Western blotting analysis using anti-MRPL11 antibody (Cat#64851). Total cell lysates (30 μ g) from various cell lines were loaded and separated by SDS-PAGE. The blot was incubated with anti-MRPL11 antibody (Cat#64851, 1:2,500) and HRP-conjugated goat anti-mouse secondary antibody (Cat#101, 1:20,000) respectively. Image was developed using FeQ™ ECL Substrate Kit (Cat#226).



Western blotting analysis using anti-MRPL11 antibody (Cat#64851). MRPL11 expression in wild-type (WT) and MRPL11 shRNA knockdown (KD) HeLa cells with 20 µg of total cell lysates. Hsp90 α serves as a loading control. The blot was incubated with anti-MRPL11 antibody (Cat#64851, 1:2,500) and HRP-conjugated goat anti-mouse secondary antibody (Cat#101, 1:20,000) respectively. Image was developed using FeQ™ ECL Substrate Kit (Cat#226).



Copyright ©2025 Genuin Biotechnologies LLC

Validation of MRPL11 knockdown using flow cytometry. Wild-type(WT, Blue) and knockdown(KD, Green) HeLa cells were stained with anti-MRPL11 antibody (Cat#64851, 1:2,000) and analyzed using BD flow cytometer.