

KD-Validated Anti-PSMA6 Mouse Monoclonal Antibody



Catalog #: 64853

Aliases

PSMA6; Proteasome 20S Subunit Alpha 6; PROS27; P27K; IOTA; Proteasome (Prosome, Macropain) Subunit, Alpha Type, 6; Multicatalytic Endopeptidase Complex Iota Chain; Proteasome Subunit Alpha Type-6; Proteasome Subunit Alpha 6; 27 KDa Prosomal Protein; Proteasome Iota Chain; Macropain Iota Chain; MGC22756; MGC23846; MGC2333; PROS-27; Testicular Secretory Protein Li 44; Proteasome Subunit Alpha1; Proteasome Subunit Iota; Macropain Subunit Iota; Proteasome Subunit A1; Prosomal P27K Protein; EC 3.4.25.1

Background

Gene Name: PSMA6

NCBI Gene Entry: [5687](#)

UniProt Entry: [P60900](#)

Application Information

Molecular Weight: Predicted, 27 kDa; observed, 27 kDa

Clonality: Mouse monoclonal antibody

Clone ID: 24GB13270

Species Reactivity: Human, mouse, rat

Applications Tested: Western blotting (WB), flow cytometry (FCM), immunocytochemistry (IC)

Immunogen

Recombinant protein of human PSMA6

Isotype

Mouse IgG1

Storage Buffer

Supplied in PBS (pH 7.4) containing 50% glycerol, and 0.02% sodium azide.

Storage

Store at -20 °C for one year.

Recommended Dilutions

Western Blotting (WB): 1:500-1:2,500

Flow Cytometry (FCM): 1:2,000

Immunocytochemistry (IC): 1:100-1:1,000

SUPPORT

SUPPORT@GENUINBIOTECH.COM
TEL: +1-540-855-7041

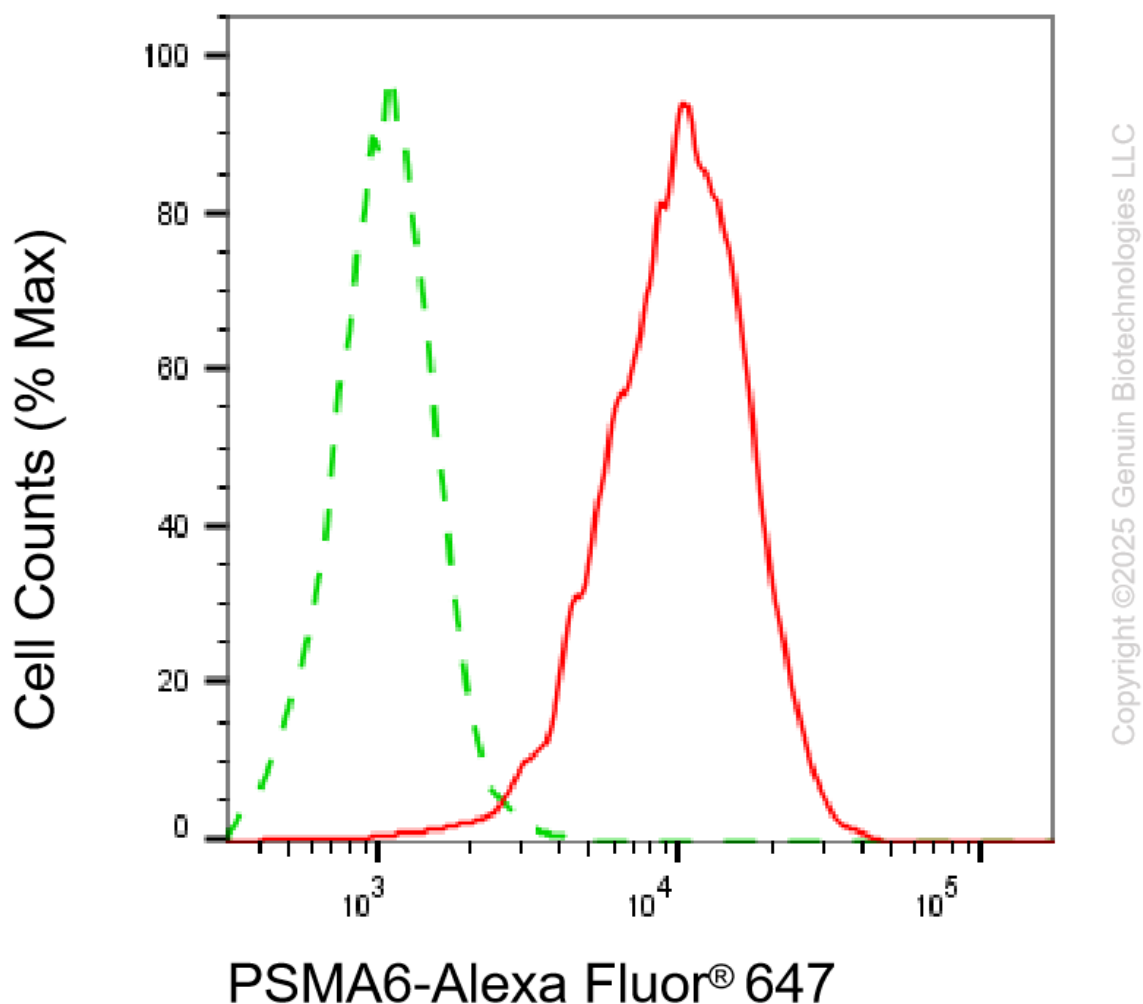
ORDERS

SALES@GENUINBIOTECH.COM
FAX: +1-540-855-7041

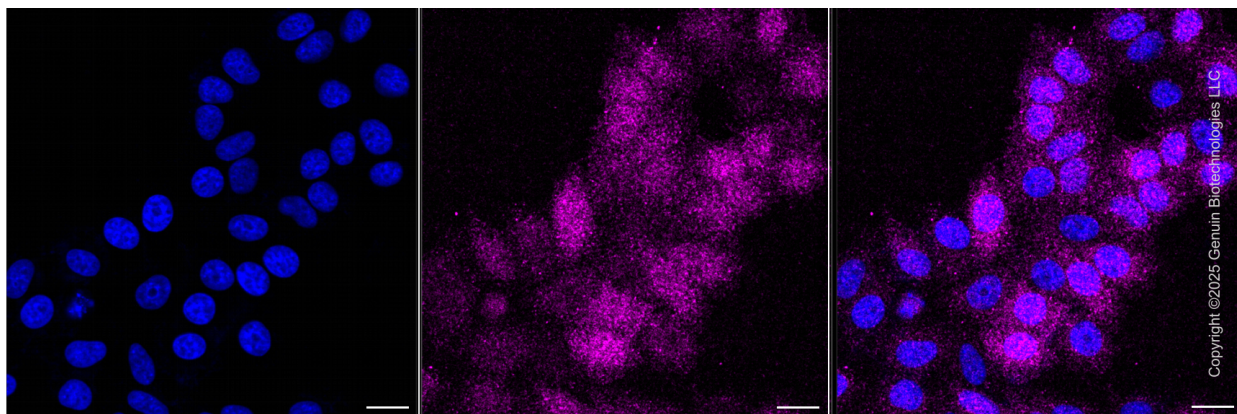
WWW.GENUINBIOTECH.COM

Note: This product is for research use only.

Validation Data



Flow cytometric analysis of PSMA6 expression in HepG2 cells using anti-PSMA6 antibody (Cat#64853, 1:1,000). Green, isotype control; red, PSMA6.



SUPPORT

SUPPORT@GENUINBIOTECH.COM
TEL: +1-540-855-7041

ORDERS

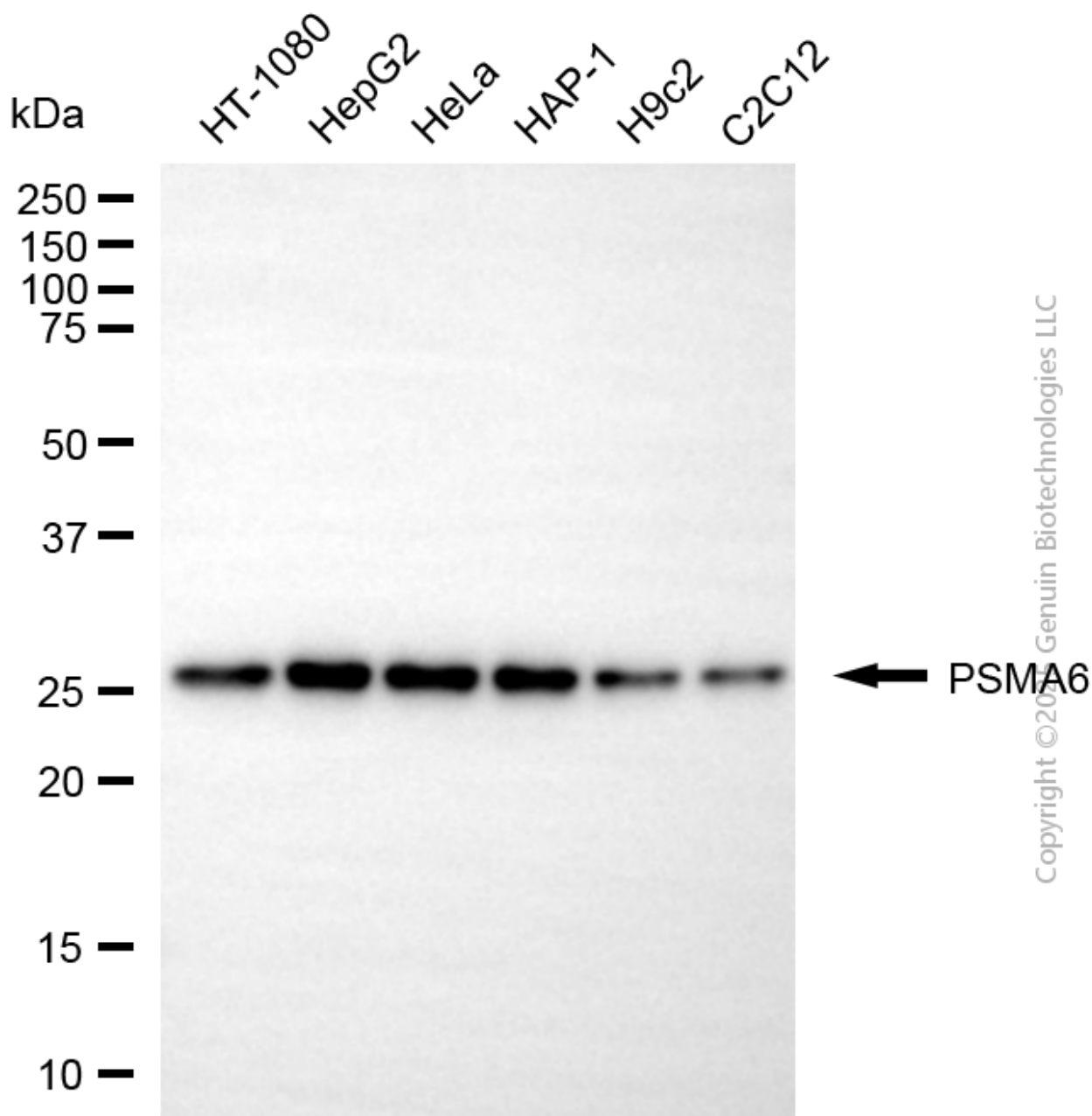
SALES@GENUINBIOTECH.COM
FAX: +1-540-855-7041

WWW.GENUINBIOTECH.COM

KD-Validated Anti-PSMA6 Mouse Monoclonal Antibody

PAGE 3

Immunocytochemical staining of HepG2 cells with anti-PSMA6 associated protein antibody (Cat#64853, 1:1,000). Nuclei were stained blue with DAPI; PSMA6 associated protein was stained magenta with Alexa Fluor® 647. Images were taken using Leica stellaris 5. Protein abundance based on laser Intensity and smart gain: Low. Scale bar, 20 μ m.



Western blotting analysis using anti-PSMA6 antibody (Cat#64853). Total cell lysates (15 μ g) from various cell lines were loaded and separated by SDS-PAGE. The blot was incubated with anti-PSMA6 antibody (Cat#64853, 1:2,500) and HRP-conjugated goat anti-mouse secondary antibody (Cat#101, 1:20,000) respectively. Image was developed using NaQ™ ECL Substrate Kit (Cat#716).

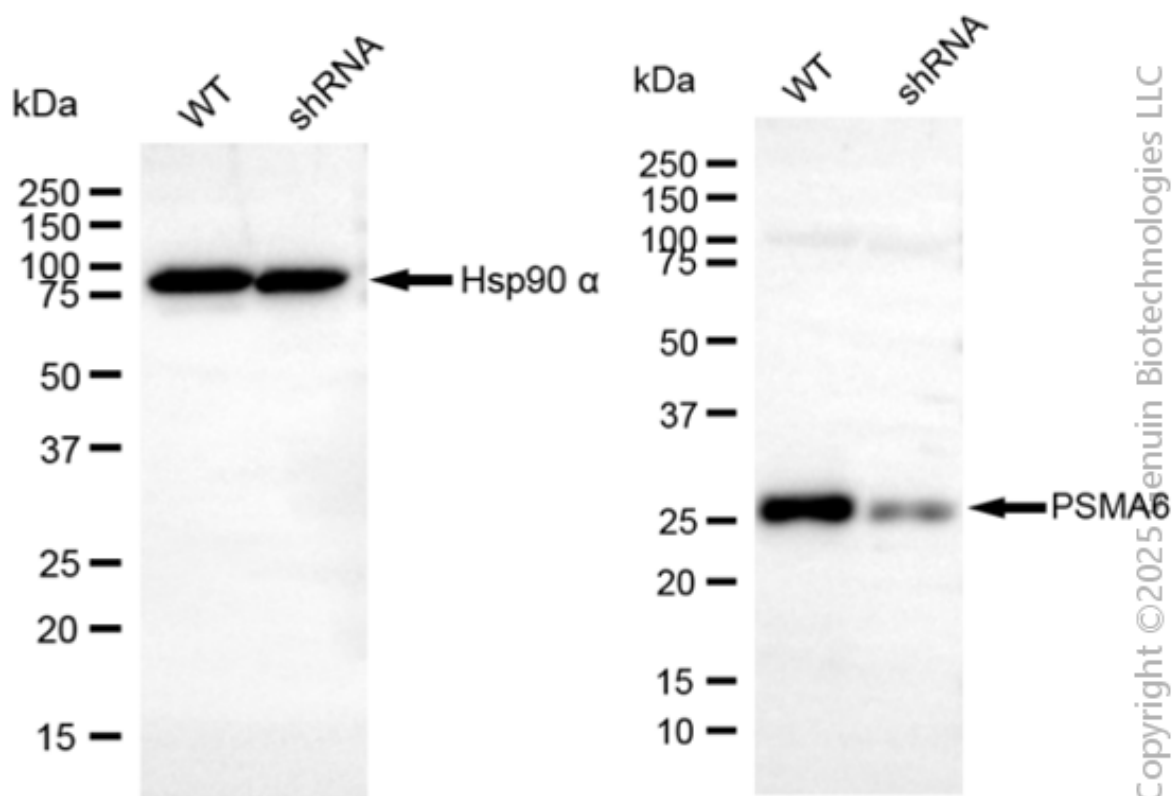
SUPPORT

SUPPORT@GENUINBIOTECH.COM
TEL: +1-540-855-7041

ORDERS

SALES@GENUINBIOTECH.COM
FAX: +1-540-855-7041

WWW.GENUINBIOTECH.COM



Western blotting analysis using anti-PSMA6 antibody (Cat#64853). PSMA6 expression in wild-type (WT) and PSMA6 shRNA knockdown (KD) HeLa cells with 15 μ g of total cell lysates. Hsp90 α serves as a loading control. The blot was incubated with anti-PSMA6 antibody (Cat#64853, 1:2,500) and HRP-conjugated goat anti-mouse secondary antibody (Cat#101, 1:20,000) respectively. Image was developed using NaQ™ ECL Substrate Kit (Cat#716).