

KD-Validated Anti-NAE1 Mouse Monoclonal Antibody



Catalog #: 64857

Aliases

NAE1; NEDD8 Activating Enzyme E1 Subunit 1; APP-BP1; APPBP1; Ula-1; Amyloid Beta Precursor Protein-Binding Protein 1, 59 KDa ; Amyloid Beta Precursor Protein Binding Protein 1, 59kDa; NEDD8-Activating Enzyme E1 Regulatory Subunit; Amyloid Protein-Binding Protein 1; Proto-Oncogene Protein 1; Amyloid Beta Precursor Protein-Binding Protein 1, 59kD; NEDD8-Activating Enzyme E1 Subunit; Protooncogene Protein 1; A-116A10.1; NEDFIH; HPP1

Background

Gene Name: NAE1

NCBI Gene Entry: [8883](#)

UniProt Entry: [Q13564](#)

Application Information

Molecular Weight: Predicted, 60 kDa; observed, 60 kDa

Clonality: Mouse monoclonal antibody

Clone ID: 24GB13290

Species Reactivity: Human, rat

Applications Tested: Western blotting (WB), immunocytochemistry (IC)

Immunogen

Recombinant protein of human NAE1

Isotype

Mouse IgG1

Storage Buffer

Supplied in PBS (pH 7.4) containing 50% glycerol, and 0.02% sodium azide.

Storage

Store at -20 °C for one year.

Recommended Dilutions

Western Blotting (WB): 1:500-1:2,000

Immunocytochemistry (IC): 1:100-1:1,000

SUPPORT

SUPPORT@GENUINBIOTECH.COM
TEL: +1-540-855-7041

ORDERS

SALES@GENUINBIOTECH.COM
FAX: +1-540-855-7041

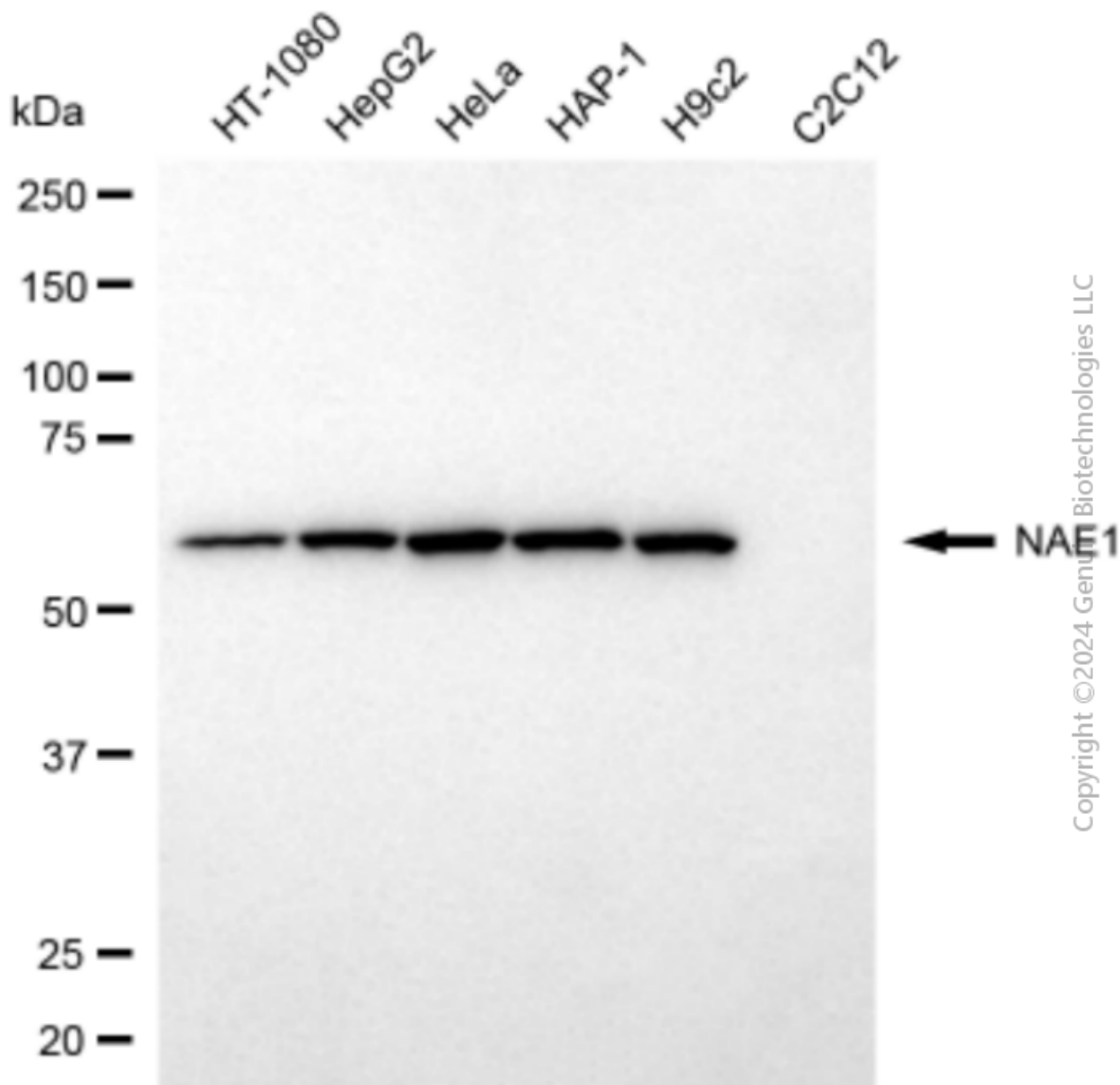
WWW.GENUINBIOTECH.COM

KD-Validated Anti-NAE1 Mouse Monoclonal Antibody

PAGE 2

Note: This product is for research use only.

Validation Data



Western blotting analysis using anti-NAE1 antibody (Cat#64857). Total cell lysates (30 µg) from various cell lines were loaded and separated by SDS-PAGE. The blot was incubated with anti-NAE1 antibody (Cat#64857, 1:2,000) and HRP-conjugated goat anti-mouse secondary antibody (Cat#101, 1:20,000) respectively. Image was developed using FeQ™ ECL Substrate Kit (Cat#226).

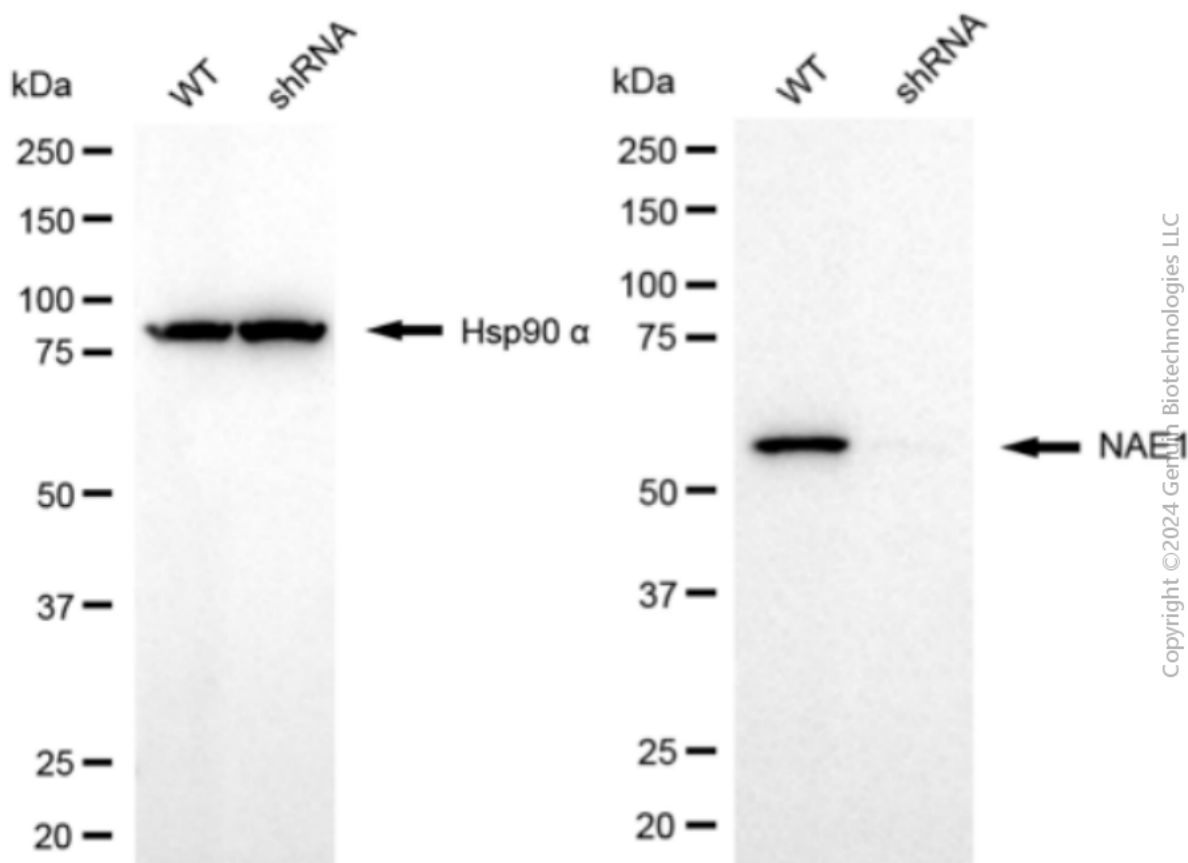
SUPPORT

SUPPORT@GENUINBIOTECH.COM
TEL: +1-540-855-7041

ORDERS

SALES@GENUINBIOTECH.COM
FAX: +1-540-855-7041

WWW.GENUINBIOTECH.COM



Western blotting analysis using anti-NAE1 antibody (Cat#64857). NAE1 expression in wild-type (WT) and NAE1 shRNA knockdown (KD) HeLa cells with 20 µg of total cell lysates. Hsp90 α serves as a loading control. The blot was incubated with anti-NAE1 antibody (Cat#64857, 1:2,000) and HRP-conjugated goat anti-mouse secondary antibody (Cat#101, 1:20,000) respectively. Image was developed using FeQ™ ECL Substrate Kit (Cat#226).