

# KD-Validated Anti-XRCC3 Mouse Monoclonal Antibody



**Catalog #: 64858**

## Aliases

XRCC3; X-Ray Repair Cross Complementing 3; DNA Repair Protein XRCC3; X-Ray Repair Complementing Defective Repair In Chinese Hamster Cells 3; X-Ray Repair Cross-Complementing Protein 3; RAD51-Like; CMM6

## Background

Gene Name: XRCC3

NCBI Gene Entry: [7517](#)

UniProt Entry: [O43542](#)

## Application Information

Molecular Weight: Predicted, 38 kDa; observed, 38 kDa

Clonality: Mouse monoclonal antibody

Clone ID: 24GB13295

Species Reactivity: Human

Applications Tested: Western blotting (WB), flow cytometry (FCM), immunocytochemistry (IC)

## Immunogen

Recombinant protein of human XRCC3

## Isotype

Mouse IgG1

## Storage Buffer

Supplied in PBS (pH 7.4) containing 50% glycerol, and 0.02% sodium azide.

## Storage

Store at -20 °C for one year.

## Recommended Dilutions

Western Blotting (WB): 1:500-1:2,500

Flow Cytometry (FCM): 1:2,000

Immunocytochemistry (IC): 1:100-1:1,000

**Note:** This product is for research use only.

---

### SUPPORT

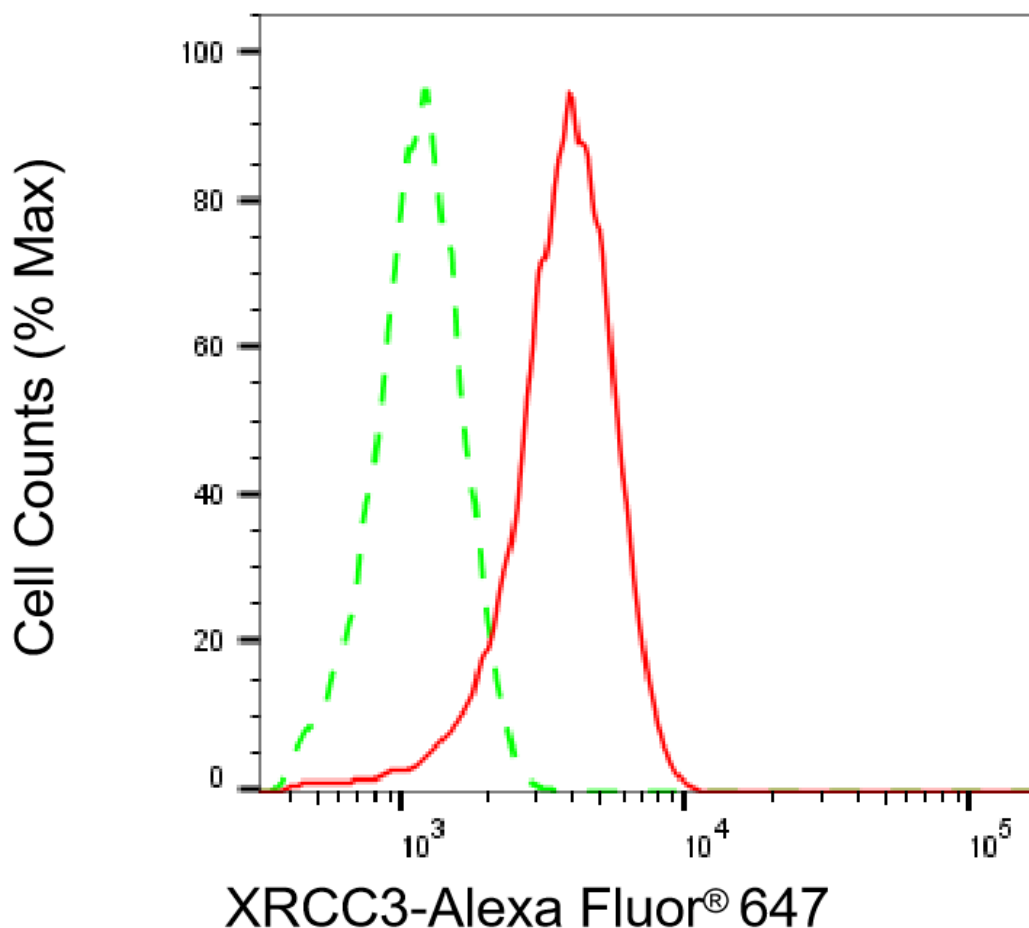
SUPPORT@GENUINBIOTECH.COM  
TEL: +1-540-855-7041

### ORDERS

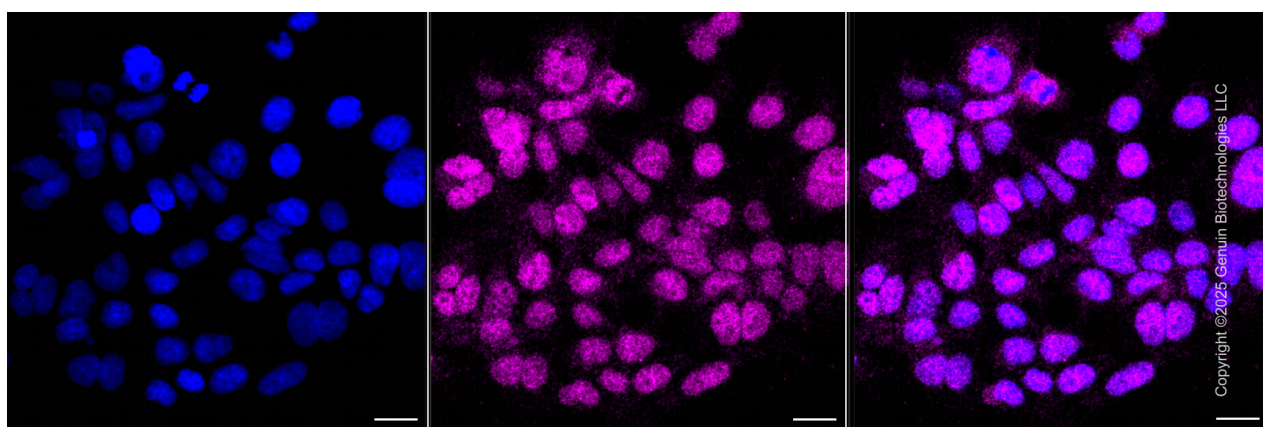
SALES@GENUINBIOTECH.COM  
FAX: +1-540-855-7041

[WWW.GENUINBIOTECH.COM](http://WWW.GENUINBIOTECH.COM)

**Validation Data**



Flow cytometric analysis of XRCC3 expression in HeLa cells using anti-XRCC3 antibody (Cat#64858, 1:2,000). Green, isotype control; red, XRCC3.



Immunocytochemical staining of HeLa cells with anti-XRCC3 associated protein antibody (Cat#64858, 1:1,000). Nuclei were stained blue with DAPI; XRCC3 associated protein was

**SUPPORT**

SUPPORT@GENUINBIOTECH.COM  
TEL: +1-540-855-7041

**ORDERS**

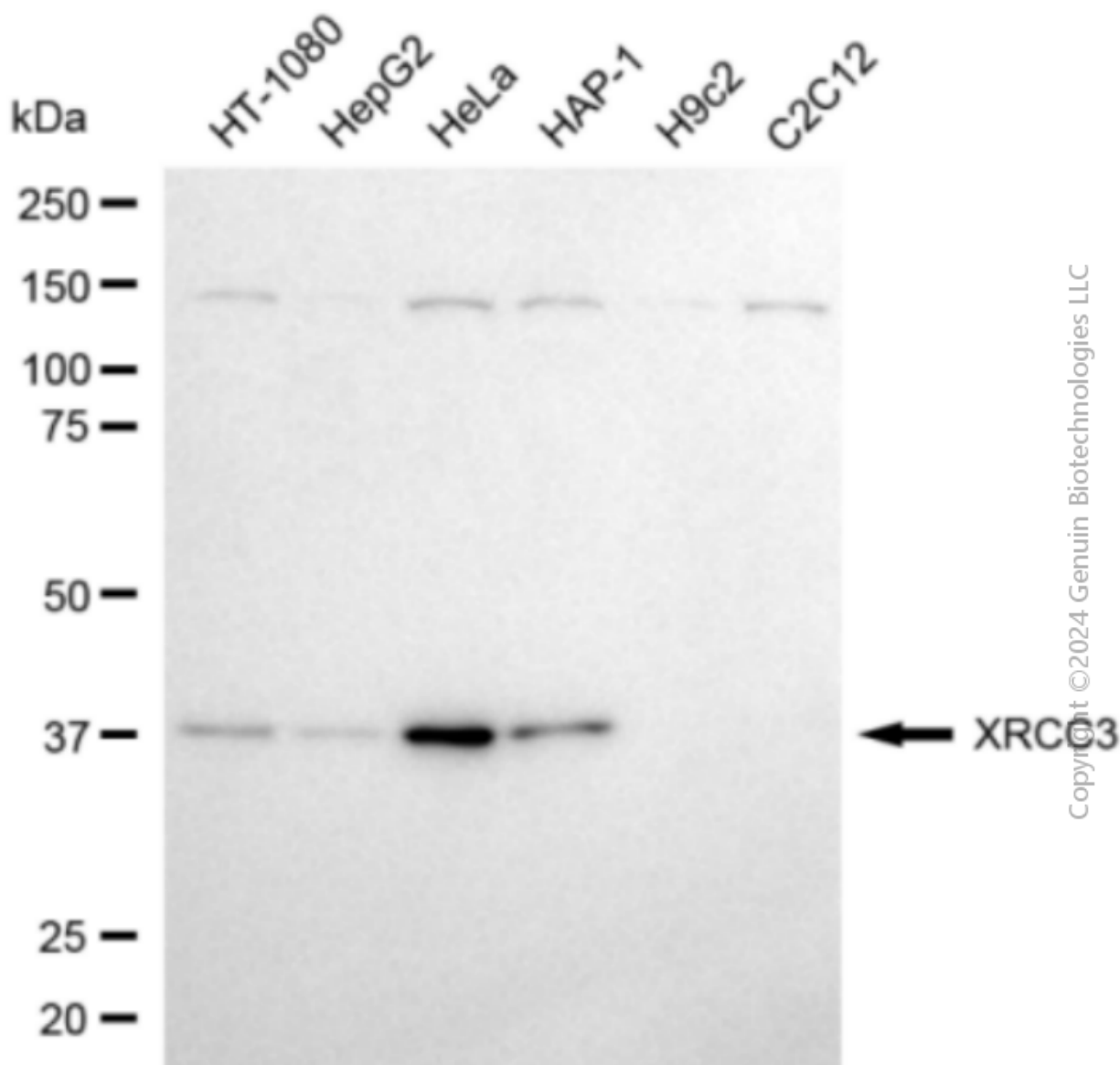
SALES@GENUINBIOTECH.COM  
FAX: +1-540-855-7041

**WWW.GENUINBIOTECH.COM**

## KD-Validated Anti-XRCC3 Mouse Monoclonal Antibody

PAGE 3

stained magenta with Alexa Fluor® 647. Images were taken using Leica stellaris 5. Protein abundance based on laser Intensity and smart gain: Medium. Scale bar, 20 µm.



Western blotting analysis using anti-XRCC3 antibody (Cat#64858). Total cell lysates (30 µg) from various cell lines were loaded and separated by SDS-PAGE. The blot was incubated with anti-XRCC3 antibody (Cat#64858, 1:2,500) and HRP-conjugated goat anti-mouse secondary antibody (Cat#101, 1:20,000) respectively. Image was developed using FeQ™ ECL Substrate Kit (Cat#226).

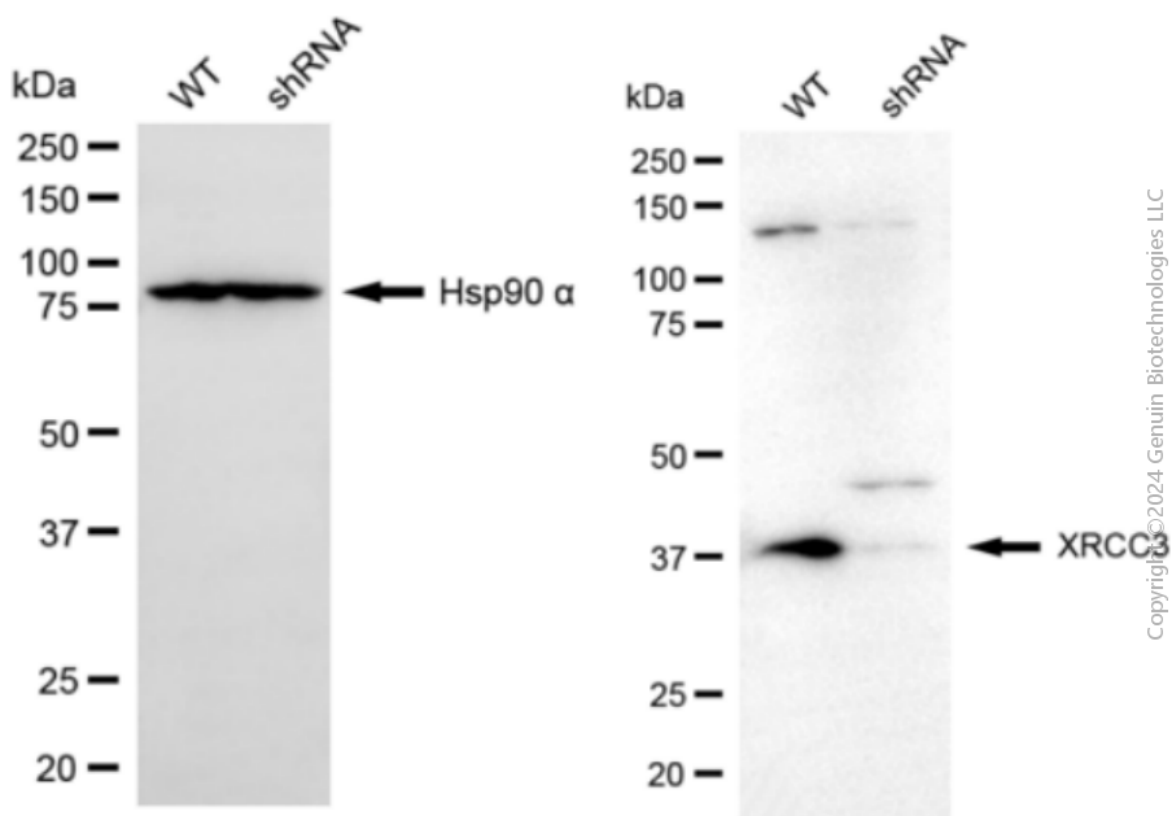
### SUPPORT

SUPPORT@GENUINBIOTECH.COM  
TEL: +1-540-855-7041

### ORDERS

SALES@GENUINBIOTECH.COM  
FAX: +1-540-855-7041

[WWW.GENUINBIOTECH.COM](http://WWW.GENUINBIOTECH.COM)



Western blotting analysis using anti-XRCC3 antibody (Cat#64858). XRCC3 expression in wild-type (WT) and XRCC3 shRNA knockdown (KD) HeLa cells with 20  $\mu$ g of total cell lysates. Hsp90  $\alpha$  serves as a loading control. The blot was incubated with anti-XRCC3 antibody (Cat#64858, 1:2,500) and HRP-conjugated goat anti-mouse secondary antibody (Cat#101, 1:20,000) respectively. Image was developed using FeQ™ ECL Substrate Kit (Cat#226).