

# KD-Validated Anti-PPP4C Mouse Monoclonal Antibody



**Catalog #: 64872**

## Aliases

PPP4C; Protein Phosphatase 4 Catalytic Subunit; PPX; PP4; Serine/Threonine-Protein Phosphatase 4 Catalytic Subunit; Protein Phosphatase 4 (Formerly X), Catalytic Subunit; Protein Phosphatase X, Catalytic Subunit; EC 3.1.3.16; PP-X; PP4C; PPP4; Epididymis Secretory Sperm Binding Protein; Protein Phosphatase 4, Catalytic Subunit; Protein Phosphatase X; PPH3; Pp4

## Background

Gene Name: PPP4C

NCBI Gene Entry: [5531](#)

UniProt Entry: [P60510](#)

## Application Information

Molecular Weight: Predicted, 35 kDa; observed, 32 kDa

Clonality: Mouse monoclonal antibody

Clone ID: 24GB13365

Species Reactivity: Human, mouse, rat

Applications Tested: Western blotting (WB), flow cytometry (FCM), immunocytochemistry (IC)

## Immunogen

Recombinant protein of human PPP4C

## Isotype

Mouse IgG2b

## Storage Buffer

Supplied in PBS (pH 7.4) containing 50% glycerol, and 0.02% sodium azide.

## Storage

Store at -20 °C for one year.

## Recommended Dilutions

Western Blotting (WB): 1:500-1:2,500

Flow Cytometry (FCM): 1:2,000

Immunocytochemistry (IC): 1:100-1:1,000

---

### SUPPORT

SUPPORT@GENUINBIOTECH.COM  
TEL: +1-540-855-7041

### ORDERS

SALES@GENUINBIOTECH.COM  
FAX: +1-540-855-7041

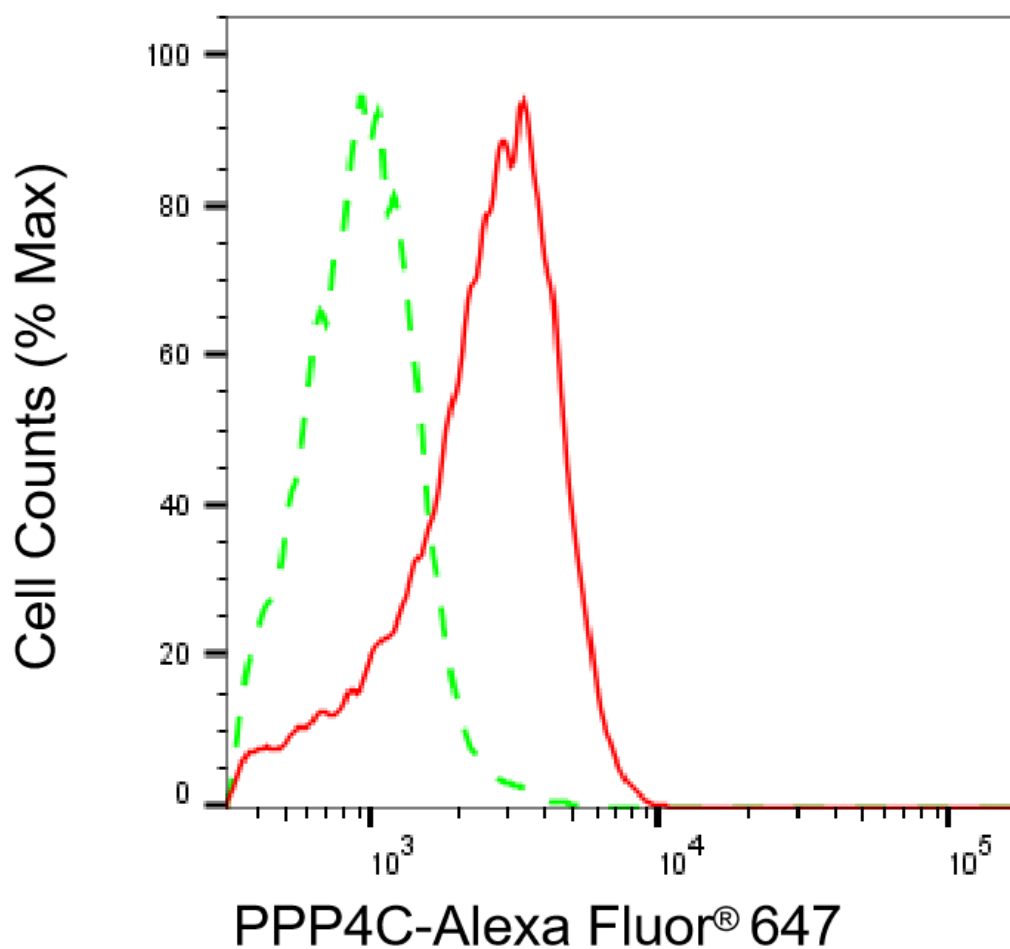
[WWW.GENUINBIOTECH.COM](http://WWW.GENUINBIOTECH.COM)

# KD-Validated Anti-PPP4C Mouse Monoclonal Antibody

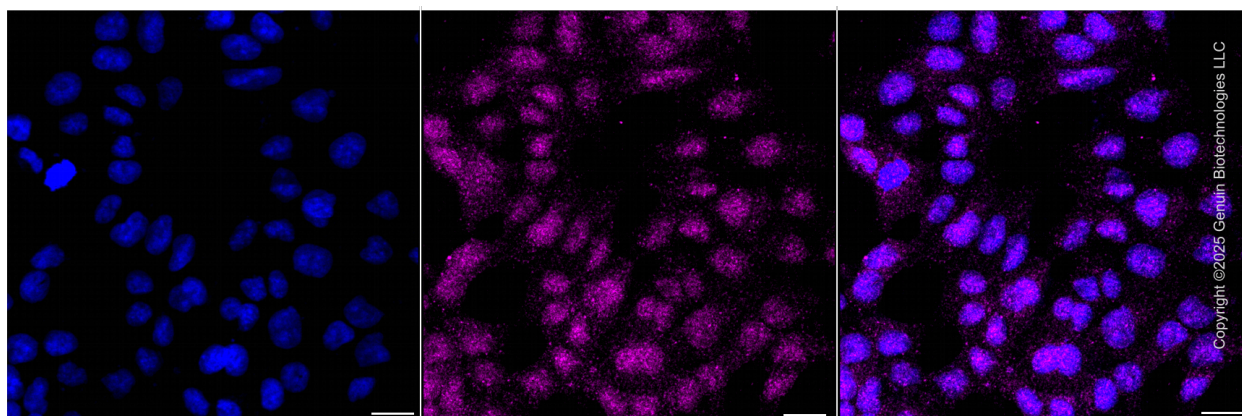
PAGE 2

**Note:** This product is for research use only.

## Validation Data



Flow cytometric analysis of PPP4C expression in HAP-1 cells using anti-PPP4C antibody (Cat#64872, 1:2,000). Green, isotype control; red, PPP4C.



### SUPPORT

SUPPORT@GENUINBIOTECH.COM  
TEL: +1-540-855-7041

### ORDERS

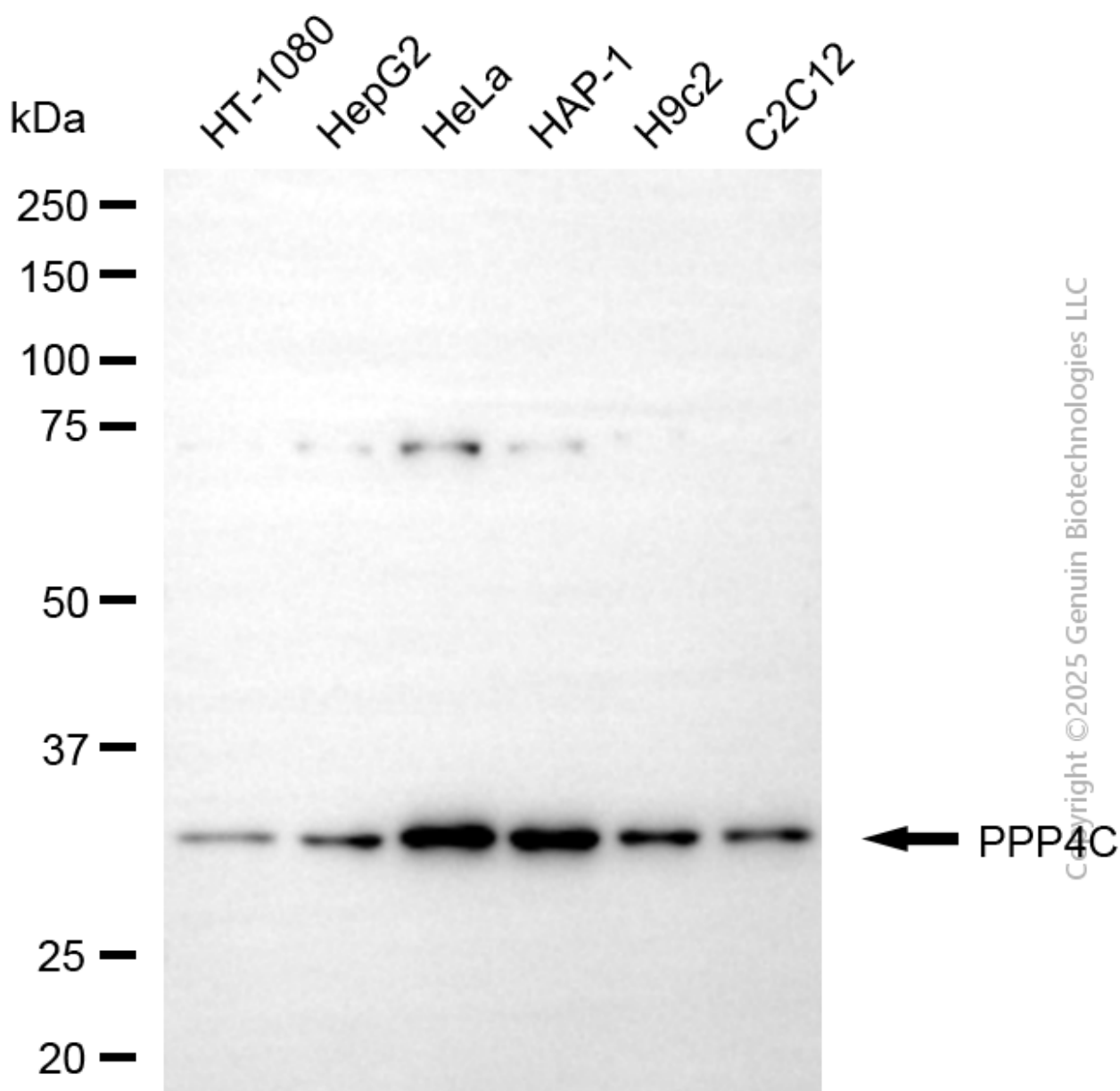
SALES@GENUINBIOTECH.COM  
FAX: +1-540-855-7041

WWW.GENUINBIOTECH.COM

## KD-Validated Anti-PPP4C Mouse Monoclonal Antibody

PAGE 3

Immunocytochemical staining of HAP-1 cells with anti-PPP4C antibody (Cat#64872, 1:1,000) . Nuclei were stained blue with DAPI; PPP4C was stained magenta with Alexa Fluor® 647. Images were taken using Leica stellaris 5. Protein abundance based on laser Intensity and smart gain:Low . Scale bar, 20  $\mu$ m.



Western blotting analysis using anti-PPP4C antibody (Cat#64872). Total cell lysates (20  $\mu$ g) from various cell lines were loaded and separated by SDS-PAGE. The blot was incubated with anti-PPP4C antibody (Cat#64872, 1:2,500) and HRP-conjugated goat anti-mouse secondary antibody (Cat#101, 1:20,000) respectively. Image was developed using FeQTM ECL Substrate Kit (Cat#226).

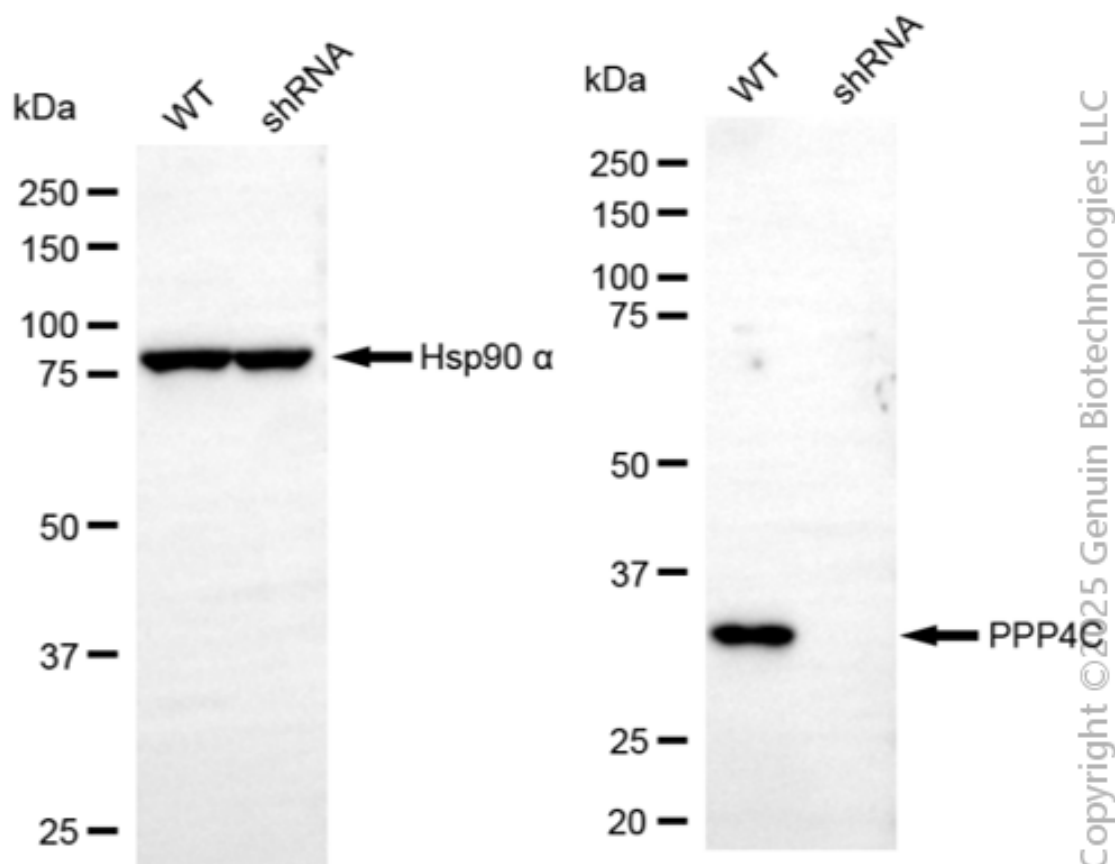
### SUPPORT

SUPPORT@GENUINBIOTECH.COM  
TEL: +1-540-855-7041

### ORDERS

SALES@GENUINBIOTECH.COM  
FAX: +1-540-855-7041

WWW.GENUINBIOTECH.COM



Western blotting analysis using anti-PPP4C antibody (Cat#64872). PPP4C expression in wild-type (WT) and PPP4C shRNA knockdown (KD) HeLa cells with 20  $\mu$ g of total cell lysates. Hsp90  $\alpha$  serves as a loading control. The blot was incubated with anti-PPP4C antibody (Cat#64872, 1:2,500) and HRP-conjugated goat anti-mouse secondary antibody (Cat#101, 1:20,000) respectively. Image was developed using NaQ™ ECL Substrate Kit (Cat#716).