

KD-Validated Anti-PPP4C Mouse Monoclonal Antibody



Catalog #: 64873

Aliases

PPP4C; Protein Phosphatase 4 Catalytic Subunit; PPX; PP4; Serine/Threonine-Protein Phosphatase 4 Catalytic Subunit; Protein Phosphatase 4 (Formerly X), Catalytic Subunit; Protein Phosphatase X, Catalytic Subunit; EC 3.1.3.16; PP-X; PP4C; PPP4; Epididymis Secretory Sperm Binding Protein; Protein Phosphatase 4, Catalytic Subunit; Protein Phosphatase X; PPH3; Pp5

Background

Gene Name: PPP4C

NCBI Gene Entry: [5531](#)

UniProt Entry: [P60510](#)

Application Information

Molecular Weight: Predicted, 35 kDa; observed, 32 kDa

Clonality: Mouse monoclonal antibody

Clone ID: 24GB13370

Species Reactivity: Human, mouse, rat

Applications Tested: Western blotting (WB), flow cytometry (FCM)

Immunogen

Recombinant protein of human PPP4C

Isotype

Mouse IgG2a

Storage Buffer

Supplied in PBS (pH 7.4) containing 50% glycerol, and 0.02% sodium azide.

Storage

Store at -20 °C for one year.

Recommended Dilutions

Western Blotting (WB): 1:500-1:2,500

Flow Cytometry (FCM): 1:2,000

Note: This product is for research use only.

SUPPORT

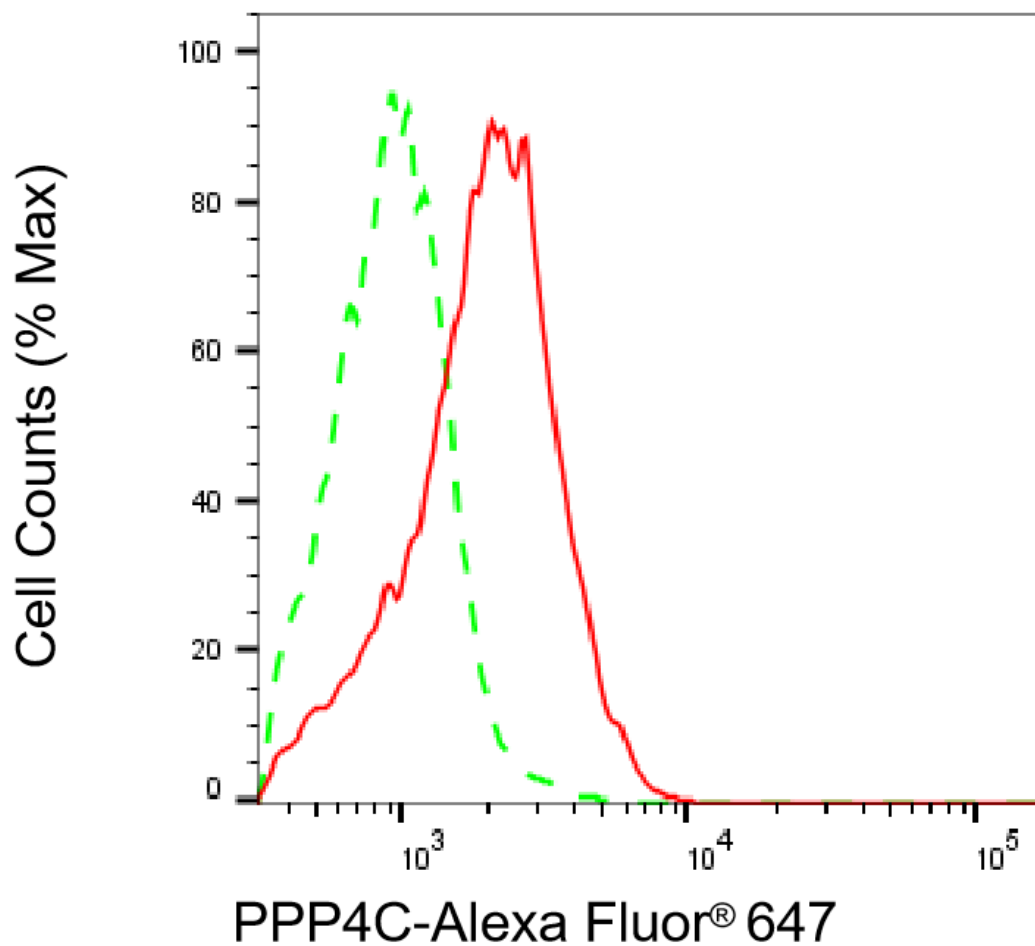
SUPPORT@GENUINBIOTECH.COM
TEL: +1-540-855-7041

ORDERS

SALES@GENUINBIOTECH.COM
FAX: +1-540-855-7041

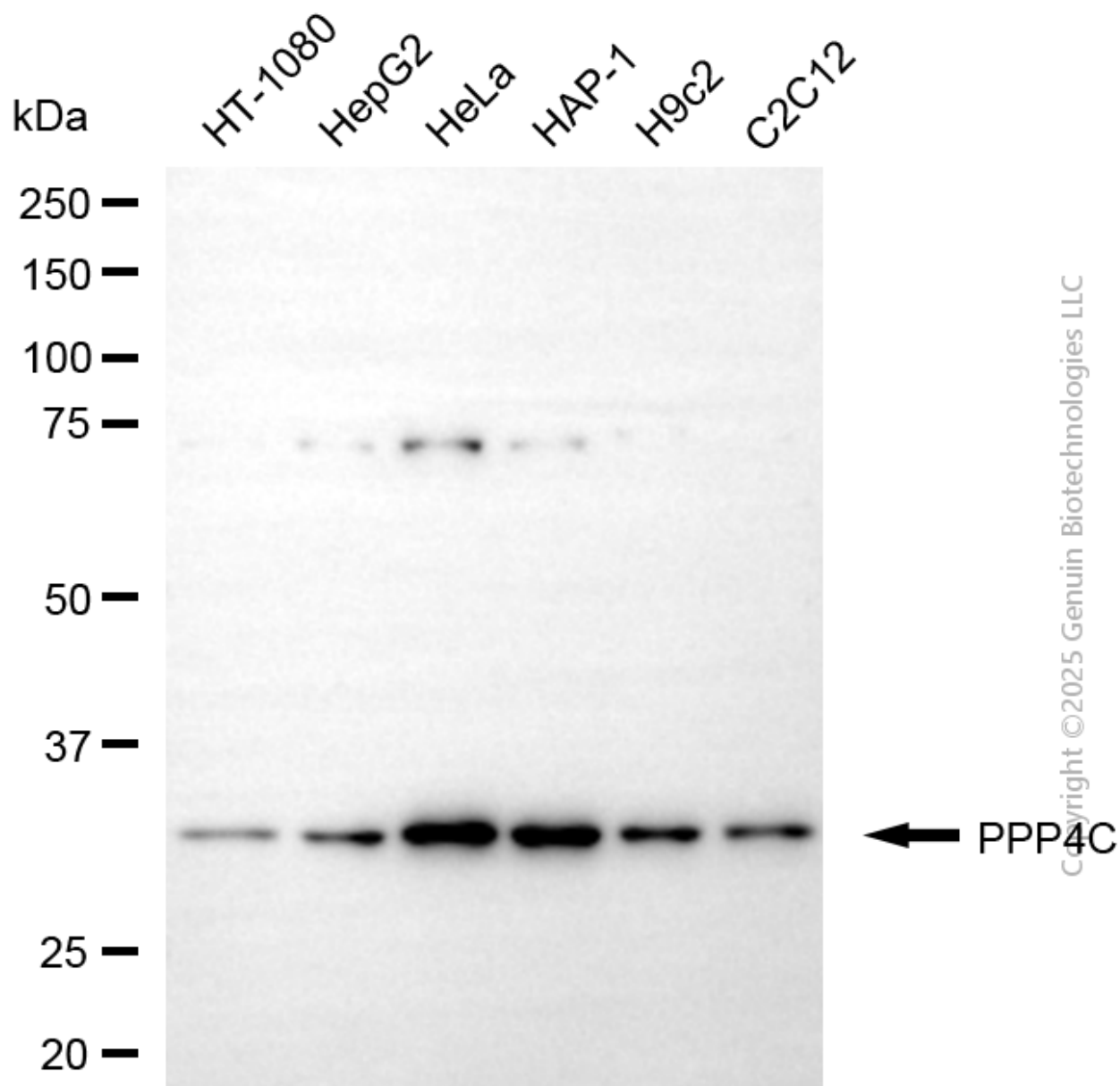
WWW.GENUINBIOTECH.COM

Validation Data

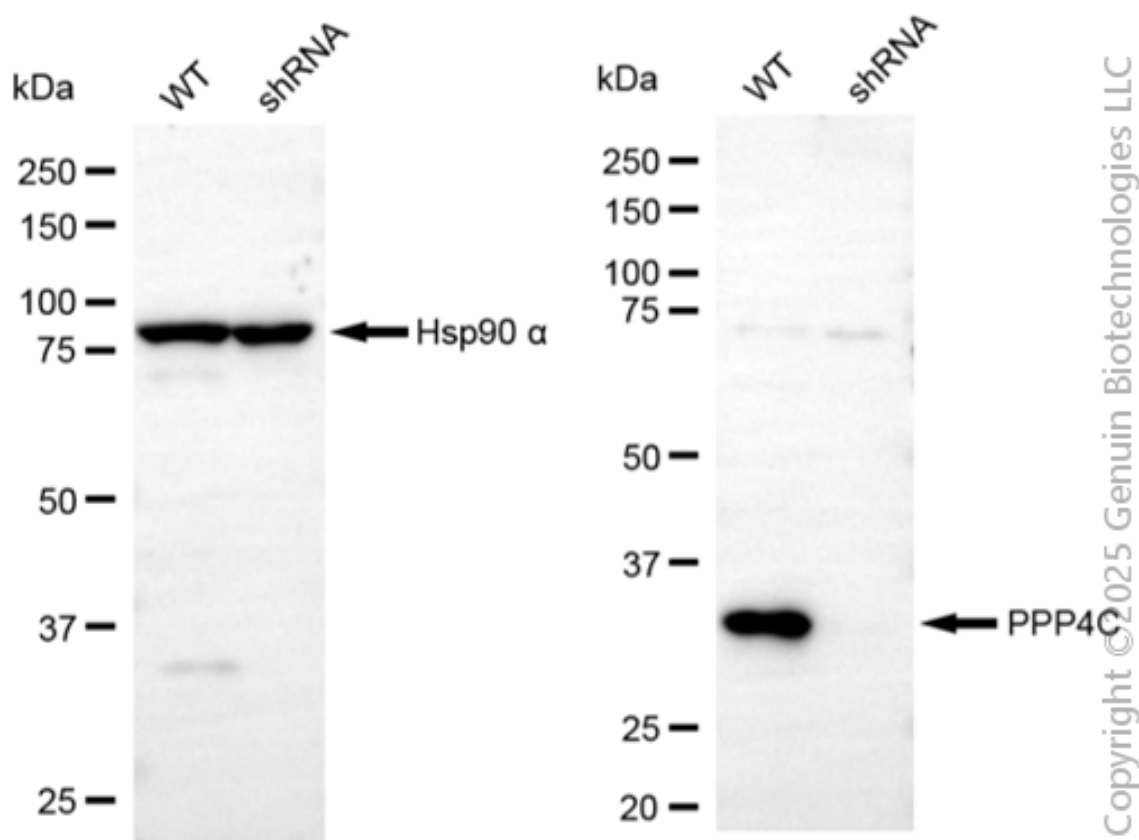


Copyright ©2025 Genuin Biotechnologies LLC

Flow cytometric analysis of PPP4C expression in HAP-1 cells using anti-PPP4C antibody (Cat#64873, 1:2,000). Green, isotype control; red, PPP4C.



Western blotting analysis using anti-PPP4C antibody (Cat#64873). Total cell lysates (20 µg) from various cell lines were loaded and separated by SDS-PAGE. The blot was incubated with anti-PPP4C antibody (Cat#64873, 1:2,500) and HRP-conjugated goat anti-mouse secondary antibody (Cat#101, 1:20,000) respectively. Image was developed using NaQ™ ECL Substrate Kit (Cat#716).



Western blotting analysis using anti-PPP4C antibody (Cat#64873). PPP4C expression in wild-type (WT) and PPP4C shRNA knockdown (KD) HeLa cells with 20 μ g of total cell lysates. Hsp90 α serves as a loading control. The blot was incubated with anti-PPP4C antibody (Cat#64873, 1:2,500) and HRP-conjugated goat anti-mouse secondary antibody (Cat#101, 1:20,000) respectively. Image was developed using NaQ™ ECL Substrate Kit (Cat#716).