

KD-Validated Anti-SPTAN1 Mouse Monoclonal Antibody



Catalog #: 64875

Aliases

SPTAN1; Spectrin Alpha, Non-Erythrocytic 1; Spectrin Alpha Chain, Non-Erythrocytic 1; Spectrin, Non-Erythroid Alpha Subunit; Fodrin Alpha Chain; Alpha-II Spectrin; Alpha-Fodrin; SPTA2; Epididymis Secretory Sperm Binding Protein; Spectrin, Non-Erythroid Alpha Chain; HMND11; DEVEP; EIEE5; HMN11; SPG91; DEE5

Background

Gene Name: SPTAN1

NCBI Gene Entry: [6709](#)

UniProt Entry: [Q13813](#)

Application Information

Molecular Weight: Predicted, 285 kDa; observed, 285 kDa

Clonality: Mouse monoclonal antibody

Clone ID: 24GB13380

Species Reactivity: Human, mouse, rat

Applications Tested: Western blotting (WB), flow cytometry (FCM), immunocytochemistry (IC)

Immunogen

Recombinant protein of human SPTAN1

Isotype

Mouse IgG1

Storage Buffer

Supplied in PBS (pH 7.4) containing 50% glycerol, and 0.02% sodium azide.

Storage

Store at -20 °C for one year.

Recommended Dilutions

Western Blotting (WB): 1:500-1:2,500

Flow Cytometry (FCM): 1:2,000

Immunocytochemistry (IC): 1:100-1:1,000

SUPPORT

SUPPORT@GENUINBIOTECH.COM
TEL: +1-540-855-7041

ORDERS

SALES@GENUINBIOTECH.COM
FAX: +1-540-855-7041

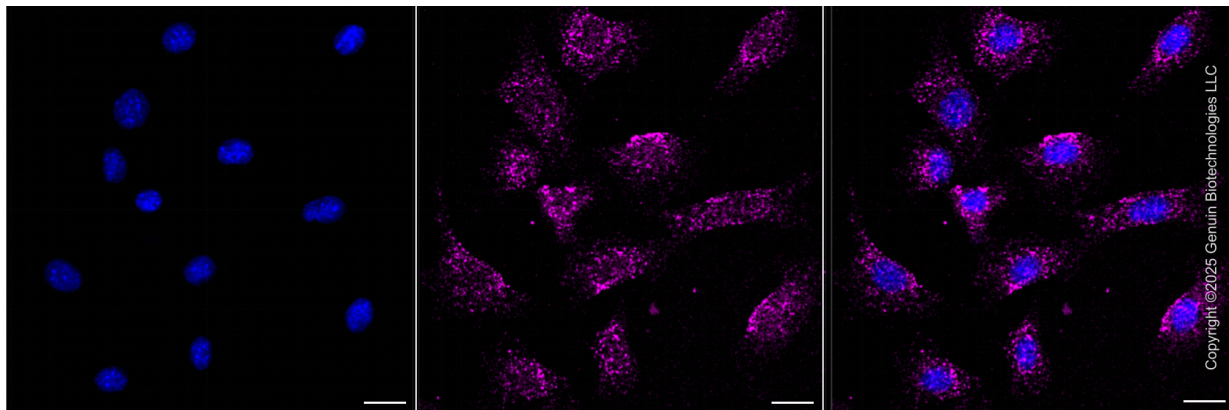
WWW.GENUINBIOTECH.COM

KD-Validated Anti-SPTAN1 Mouse Monoclonal Antibody

PAGE 2

Note: This product is for research use only.

Validation Data



Immunocytochemical staining of C2C12 cells with anti-SPTAN1 associated protein antibody (Cat#64875, 1:1,000) . Nuclei were stained blue with DAPI; SPTAN1 associated protein was stained magenta with Alexa Fluor® 647. Images were taken using Leica stellaris 5. Protein abundance based on laser Intensity and smart gain: Low. Scale bar, 20 μ m.

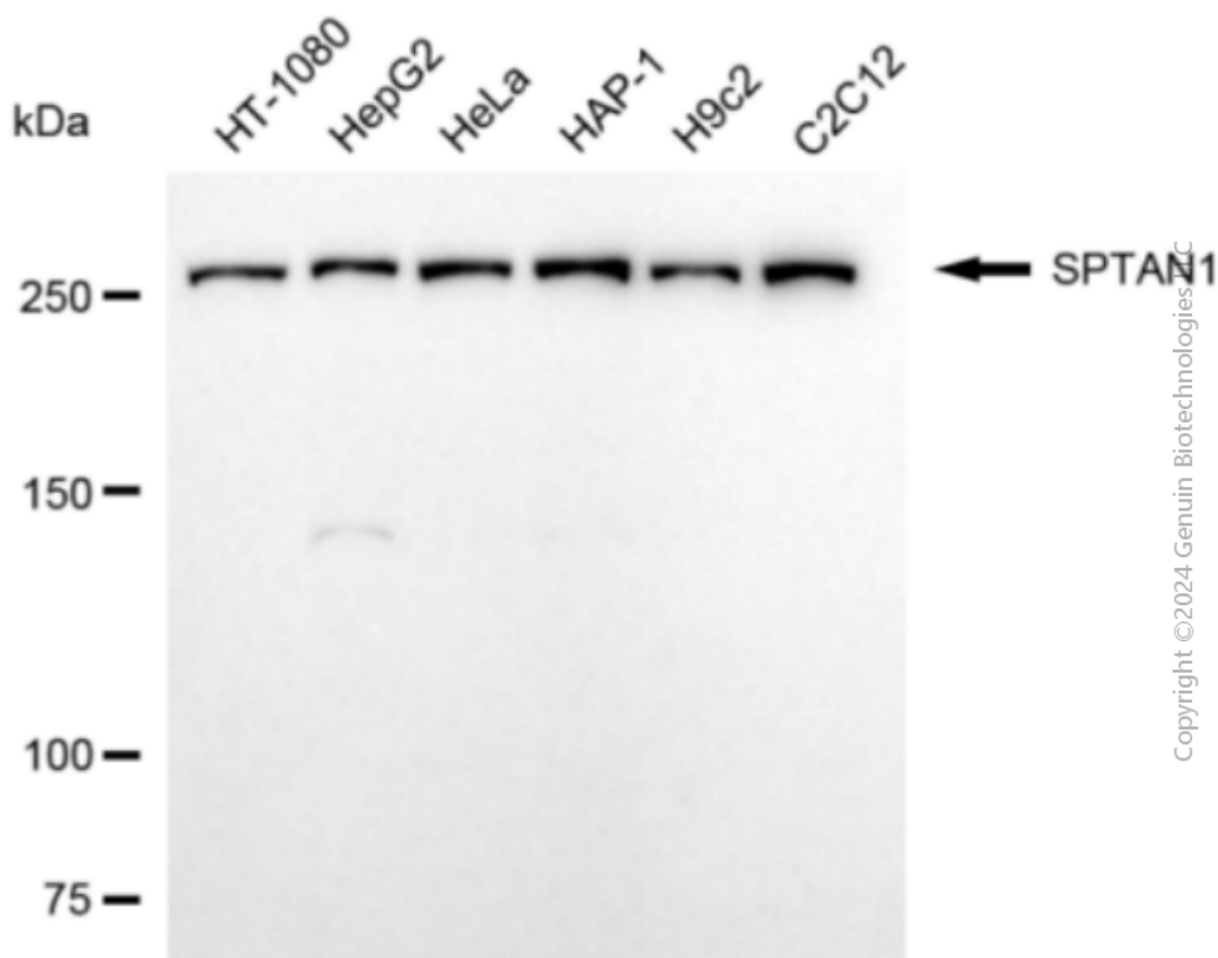
SUPPORT

SUPPORT@GENUINBIOTECH.COM
TEL: +1-540-855-7041

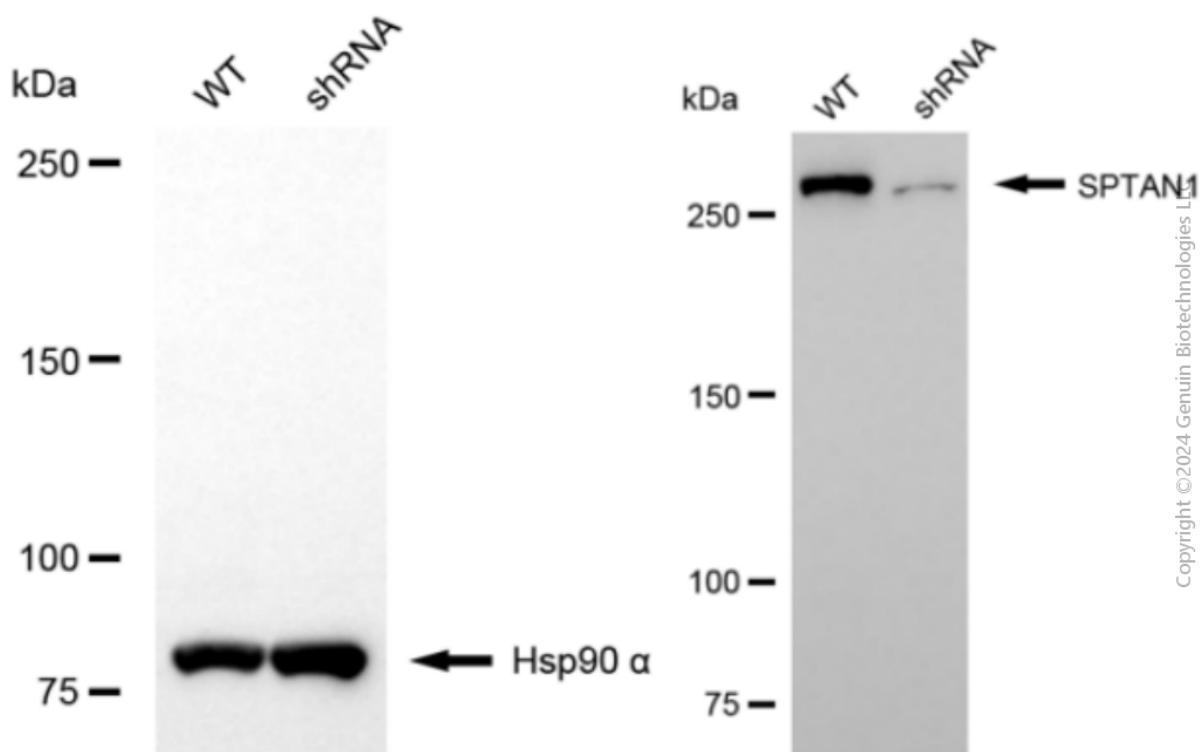
ORDERS

SALES@GENUINBIOTECH.COM
FAX: +1-540-855-7041

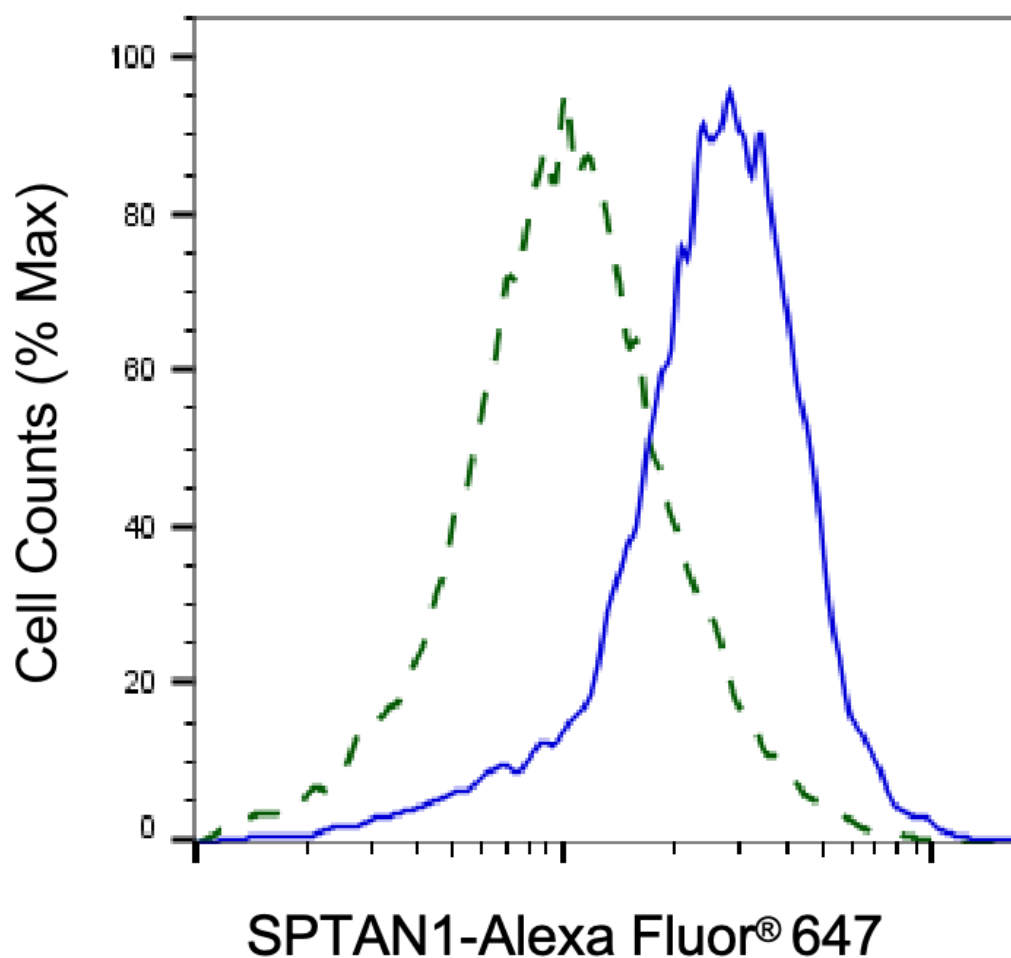
WWW.GENUINBIOTECH.COM



Western blotting analysis using anti-SPTAN1 antibody (Cat#64875). Total cell lysates (30 µg) from various cell lines were loaded and separated by SDS-PAGE. The blot was incubated with anti-SPTAN1 antibody (Cat#64875, 1:2,500) and HRP-conjugated goat anti-mouse secondary antibody (Cat#101, 1:20,000) respectively. Image was developed using FeQ™ ECL Substrate Kit (Cat#226).

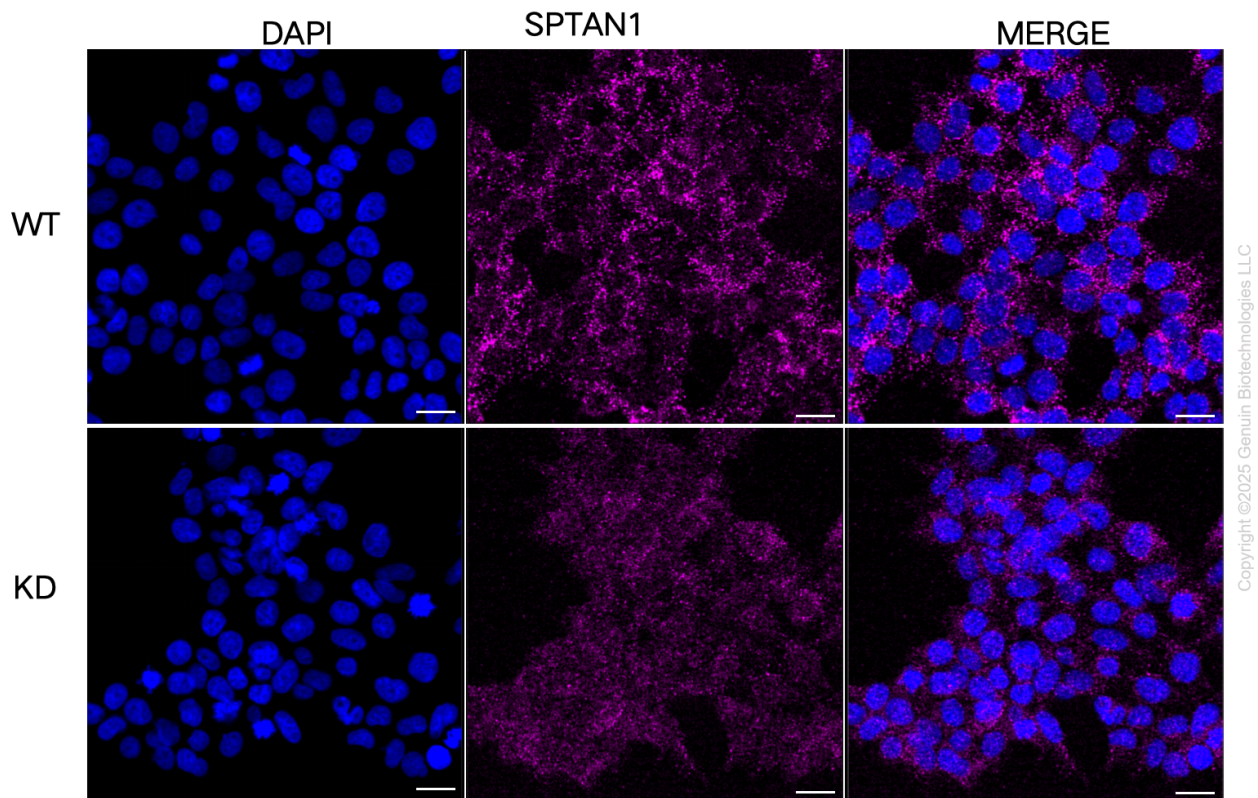


Western blotting analysis using anti-SPTAN1 antibody (Cat#64875). SPTAN1 expression in wild-type (WT) and SPTAN1 shRNA knockdown (KD) HeLa cells with 20 μ g of total cell lysates. Hsp90 α serves as a loading control. The blot was incubated with anti-SPTAN1 antibody (Cat#64875, 1:2,500) and HRP-conjugated goat anti-mouse secondary antibody (Cat#101, 1:20,000) respectively. Image was developed using NaQ™ ECL Substrate Kit (Cat#716).



Copyright ©2025 Genuin Biotechnologies LLC

Validation of SPTAN1 knockdown using flow cytometry. Wild-type(WT, Blue) and knockdown(KD, Green) HeLa cells were stained with anti-SPTAN1 antibody (Cat#64875, 1:2,000) and analyzed using BD flow cytometer.



Immunocytochemical staining of HeLa cells using anti-SPTAN1 antibody (Cat#64875, 1:1,000), Top panel: wild-type (WT); Bottom panel: SPTAN1 shRNA knockdown (KD). Nuclei were stained blue with DAPI; SPTAN1 was stained magenta with Alexa Fluor® 647. Scale bar, 20 μ m.