

KD-Validated Anti-NEDD4 Mouse Monoclonal Antibody



Catalog #: 64880

Aliases

NEDD4; NEDD4 E3 Ubiquitin Protein Ligase; NEDD4-1; RPF1; KIAA0093; Neural Precursor Cell Expressed, Developmentally Down-Regulated 4, E3 Ubiquitin Protein Ligase; Cell Proliferation-Inducing Gene 53 Protein; HECT-Type E3 Ubiquitin Transferase NEDD4; E3 Ubiquitin-Protein Ligase NEDD4; Receptor-Potentiating Factor 1; MGC176705; Neural Precursor Cell Expressed Developmentally Down-Regulated Protein 4; Neural Precursor Cell Expressed, Developmentally Down-Regulated 4; EC 2.3.2.26; EC 6.3.2; NEDD-4

Background

Gene Name: NEDD4

NCBI Gene Entry: [4734](#)

UniProt Entry: [P46934](#)

Application Information

Molecular Weight: Predicted, 149 kDa; observed, 130 kDa

Clonality: Mouse monoclonal antibody

Clone ID: 24GB15775

Species Reactivity: Human

Applications Tested: Western blotting (WB)

Immunogen

Recombinant protein of human NEDD4

Isotype

Mouse IgG1

Storage Buffer

Supplied in PBS (pH 7.4) containing 50% glycerol, and 0.02% sodium azide.

Storage

Store at -20 °C for one year.

Recommended Dilutions

Western Blotting (WB): 1:500-1:2,500

SUPPORT

SUPPORT@GENUINBIOTECH.COM
TEL: +1-540-855-7041

ORDERS

SALES@GENUINBIOTECH.COM
FAX: +1-540-855-7041

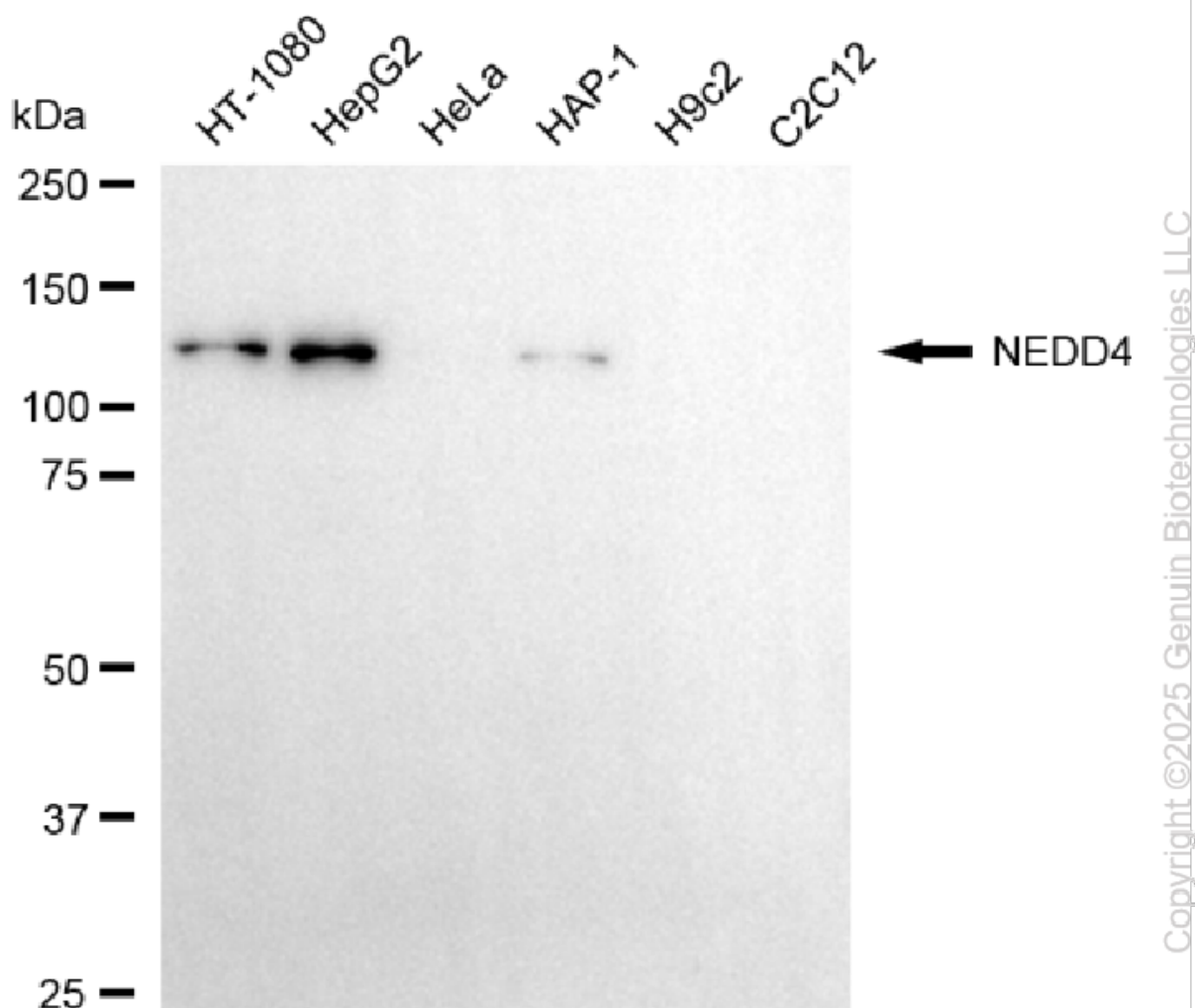
WWW.GENUINBIOTECH.COM

KD-Validated Anti-NEDD4 Mouse Monoclonal Antibody

PAGE 2

Note: This product is for research use only.

Validation Data



Western blotting analysis using anti-NEDD4 antibody (Cat#64880). Total cell lysates (30 μ g) from various cell lines were loaded and separated by SDS-PAGE. The blot was incubated with anti-NEDD4 antibody (Cat#64880, 1:2,500) and HRP-conjugated goat anti-mouse secondary antibody (Cat#101, 1:20,000) respectively. Image was developed using FeQTM ECL Substrate Kit (Cat#226).

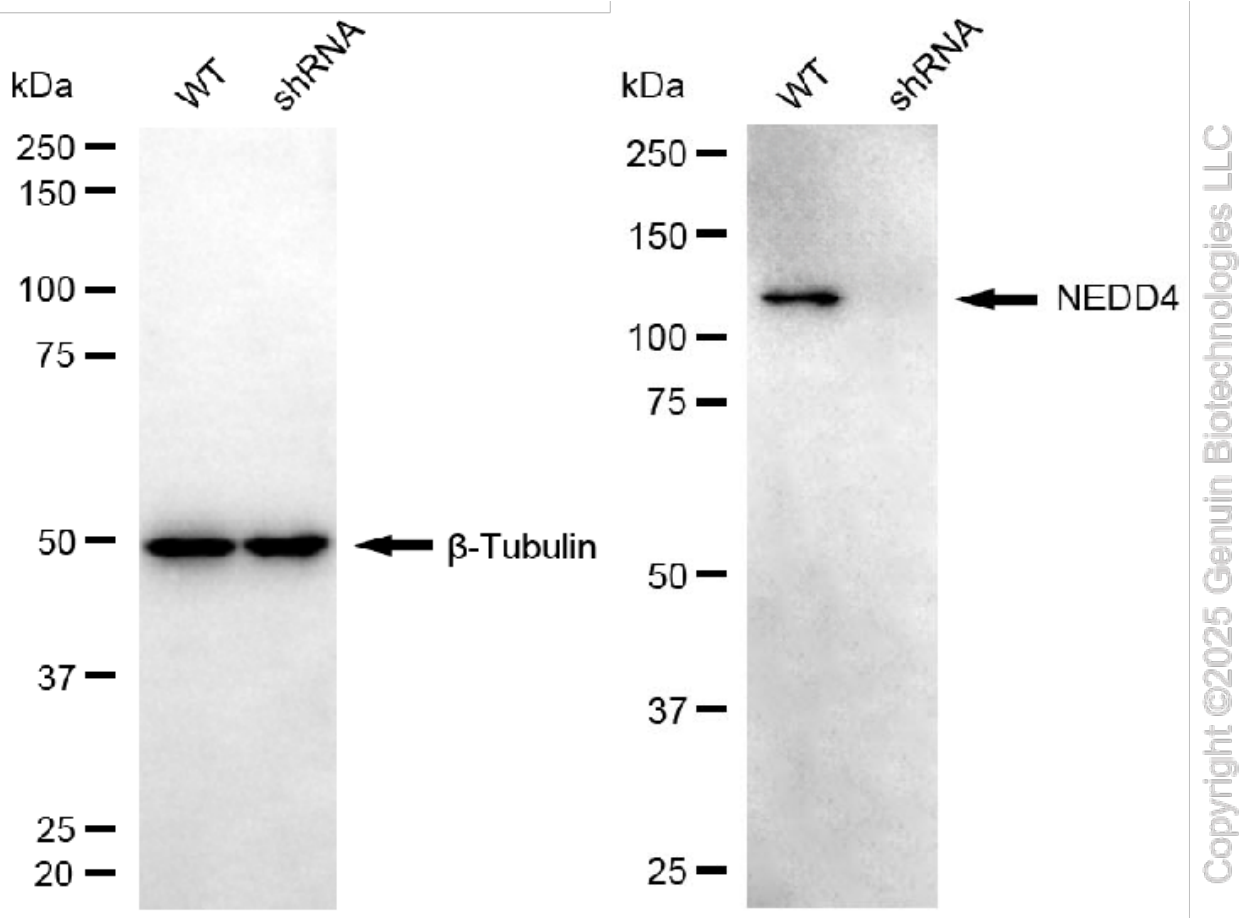
SUPPORT

SUPPORT@GENUINBIOTECH.COM
TEL: +1-540-855-7041

ORDERS

SALES@GENUINBIOTECH.COM
FAX: +1-540-855-7041

WWW.GENUINBIOTECH.COM



Western blotting analysis using anti-NEDD4 antibody (Cat#64880). NEDD4 expression in wild-type (WT) and NEDD4 shRNA knockdown (KD) HeLa cells with 20 µg of total cell lysates. β-Tubulin serves as a loading control. The blot was incubated with anti-NEDD4 antibody (Cat#64880, 1:2,500) and HRP-conjugated goat anti-mouse secondary antibody (Cat#101, 1:20,000) respectively. Image was developed using FeQ™ ECL Substrate Kit (Cat#226).