

KD-Validated Anti-CREB1 Mouse Monoclonal Antibody



Catalog #: 64881

Aliases

CREB1; CAMP Responsive Element Binding Protein 1; Cyclic AMP-Responsive Element-Binding Protein 1; CREB-1; Cyclic Adenosine 3',5'-Monophosphate Response Element-Binding Protein CREB; Cyclic Adenosine 3',5'-Monophosphate Response Element Binding Protein; CAMP-Responsive Element-Binding Protein 1; CAMP-Response Element-Binding Protein-1; Active Transcription Factor CREB; Transactivator Protein; CREB

Background

Gene Name: CREB1

NCBI Gene Entry: [1385](#)

UniProt Entry: [P16220](#)

Application Information

Molecular Weight: Predicted, 35 kDa; observed, 44 kDa

Clonality: Mouse monoclonal antibody

Clone ID: 24GB15780

Species Reactivity: Human, mouse, rat

Applications Tested: Western blotting (WB), flow cytometry (FCM), immunocytochemistry (IC)

Immunogen

Recombinant protein of human CREB1

Isotype

Mouse IgG1

Storage Buffer

Supplied in PBS (pH 7.4) containing 50% glycerol, and 0.02% sodium azide.

Storage

Store at -20 °C for one year.

Recommended Dilutions

Western Blotting (WB): 1:500-1:2,500

Flow Cytometry (FCM): 1:1,000

Immunocytochemistry (IC): 1:100-1:1,000

SUPPORT

SUPPORT@GENUINBIOTECH.COM
TEL: +1-540-855-7041

ORDERS

SALES@GENUINBIOTECH.COM
FAX: +1-540-855-7041

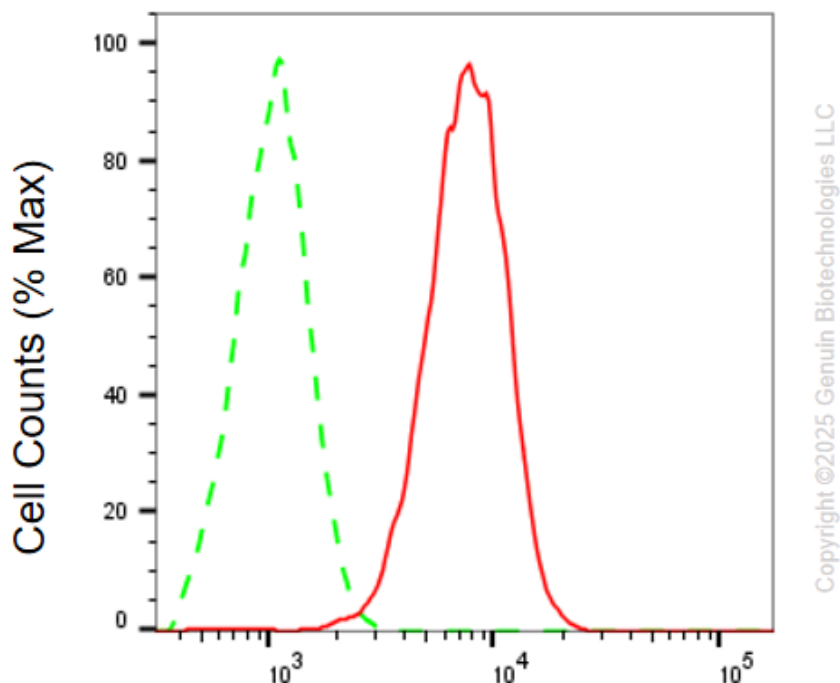
WWW.GENUINBIOTECH.COM

KD-Validated Anti-CREB1 Mouse Monoclonal Antibody

PAGE 2

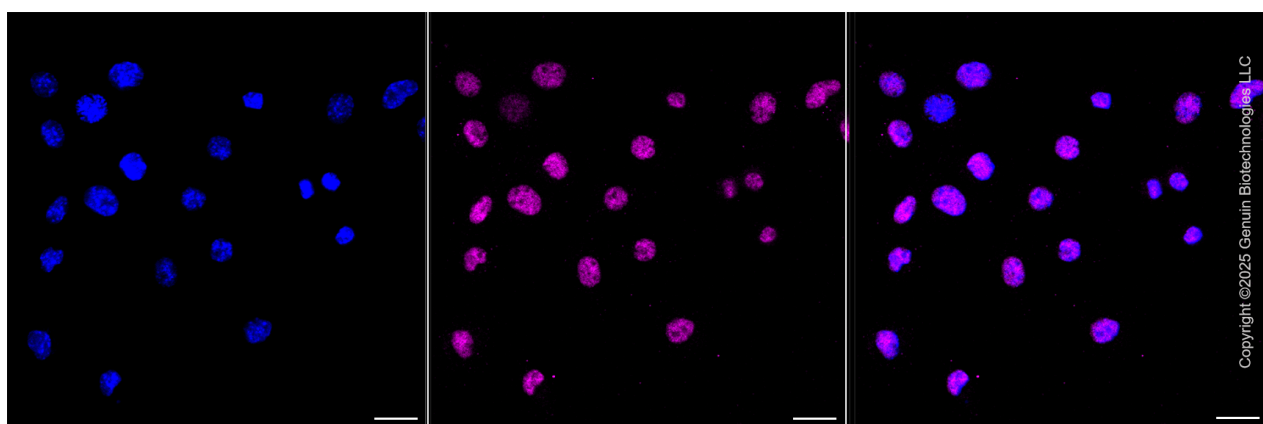
Note: This product is for research use only.

Validation Data



cAMP responsive element binding protein 1-Alexa Fluor® 647

Flow cytometric analysis of cAMP responsive element binding protein 1 expression in C2C12 cells using anti-cAMP responsive element binding protein 1 antibody (Cat#64881, 1:1,000) . Green, isotype control; red, cAMP responsive element binding protein 1.



Immunocytochemical staining of C2C12 cells with anti-CAMP responsive element binding protein 1 antibody (Cat#64881, 1:1,000) . Nuclei were stained blue with DAPI; CAMP responsive element binding protein 1 was stained magenta with Alexa Fluor® 647. Images were taken using

SUPPORT

SUPPORT@GENUINBIOTECH.COM
TEL: +1-540-855-7041

ORDERS

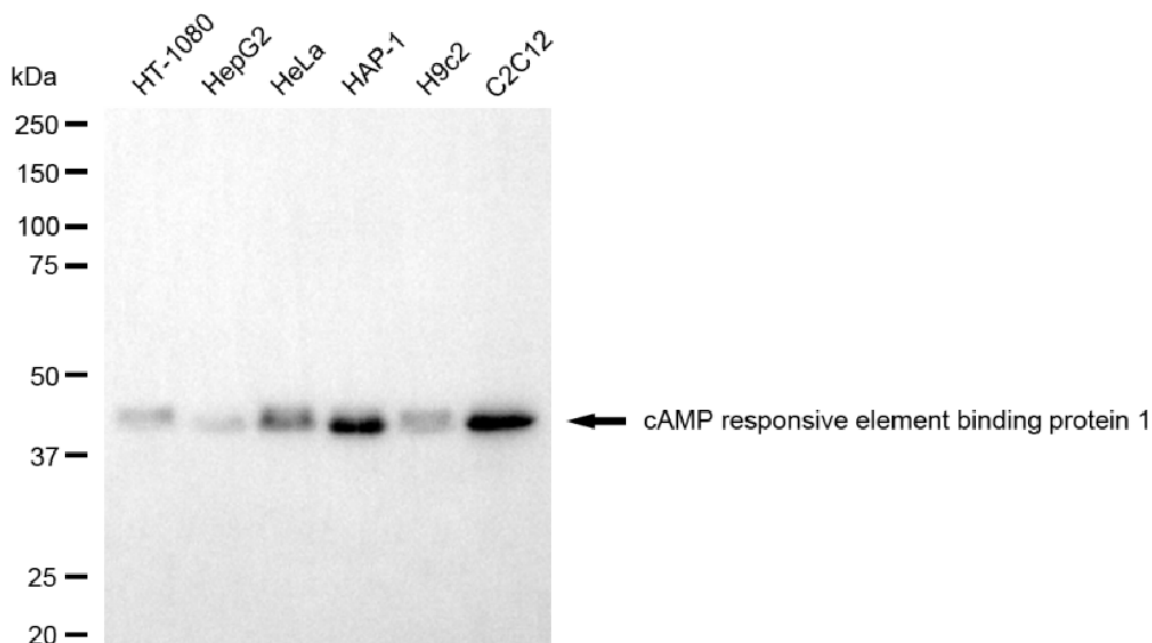
SALES@GENUINBIOTECH.COM
FAX: +1-540-855-7041

WWW.GENUINBIOTECH.COM

KD-Validated Anti-CREB1 Mouse Monoclonal Antibody

PAGE 3

Leica stellaris 5. Protein abundance based on laser Intensity and smart gain: Medium. Scale bar, 20 μ m.



Copyright ©2025 Genuin Biotechnologies LLC

Western blotting analysis using anti-cAMP responsive element binding protein 1 antibody (Cat#64881). Total cell lysates (30 μ g) from various cell lines were loaded and separated by SDS-PAGE. The blot was incubated with anti-cAMP responsive element binding protein 1 antibody (Cat#64881, 1:2,500) and HRP-conjugated goat anti-mouse secondary antibody (Cat#101, 1:20,000) respectively. Image was developed using NaQ™ ECL Substrate Kit (Cat#716).

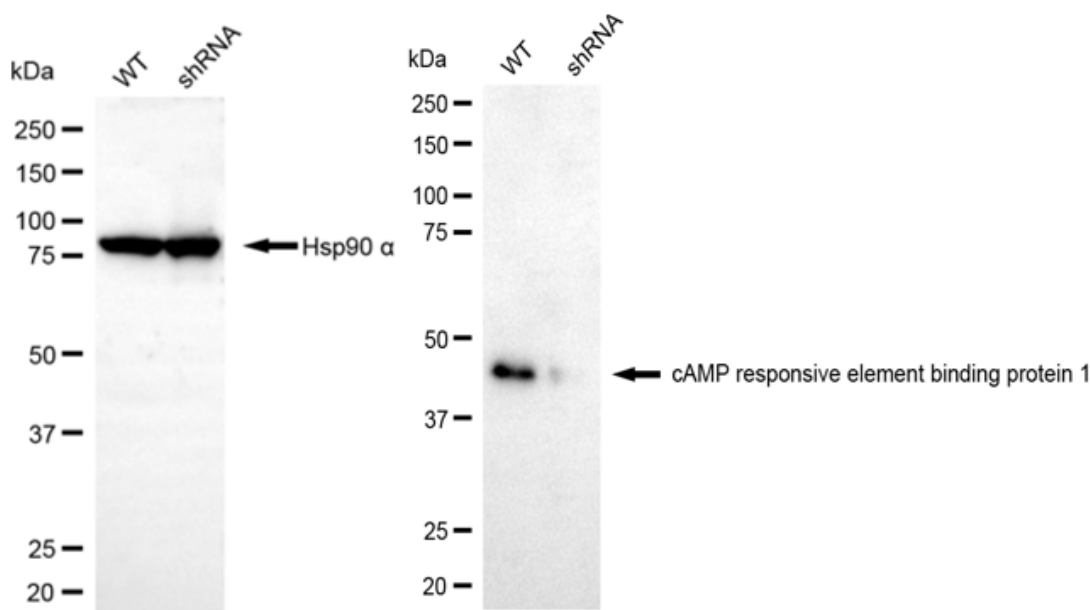
SUPPORT

SUPPORT@GENUINBIOTECH.COM
TEL: +1-540-855-7041

ORDERS

SALES@GENUINBIOTECH.COM
FAX: +1-540-855-7041

WWW.GENUINBIOTECH.COM



Western blotting analysis using anti-cAMP responsive element binding protein 1 responsive element binding protein 1 antibody (Cat#64881). CAMP responsive element binding protein 1 responsive element binding protein 1 expression in wild-type (WT) and CREB1 shRNA knockdown (KD) HeLa cells with 20 μ g of total cell lysates. Hsp90 α serves as a loading control. The blot was incubated with anti-cAMP responsive element binding protein 1 responsive element binding protein 1 antibody (Cat#64881, 1:2,500) and HRP-conjugated goat anti-mouse secondary antibody (Cat#101, 1:20,000) respectively. Image was developed using FeQTM ECL Substrate Kit (Cat#226).