

KD-Validated Anti-HMMR Rabbit Monoclonal Antibody



Catalog #: 64888

Aliases

HMMR; Hyaluronan Mediated Motility Receptor; RHAMM; CD168; Intracellular Hyaluronic Acid-Binding Protein; Receptor For Hyaluronan-Mediated Motility; IHABP; Hyaluronan-Mediated Motility Receptor (RHAMM); Hyaluronan-Mediated Motility Receptor; CD168 Antigen

Background

Gene Name: HMMR

NCBI Gene Entry: [3161](#)

UniProt Entry: [O75330](#)

Application Information

Molecular Weight: Predicted, 84 kDa; observed, 75 kDa

Clonality: Rabbit monoclonal antibody

Clone ID: 24GB13600

Species Reactivity: Human

Applications Tested: Western blotting (WB), flow cytometry (FCM), immunocytochemistry (IC)

Immunogen

A synthesized peptide derived from human CD168

Isotype

Rabbit IgG

Storage Buffer

Supplied in PBS (pH 7.4) containing 50% glycerol, and 0.02% sodium azide.

Storage

Store at -20 °C for one year.

Recommended Dilutions

Western Blotting (WB): 1:1,000-1:5,000

Immunocytochemistry (IC): 1:100-1:1,000

Flow Cytometry (FCM) : 1:2,000

Note: This product is for research use only.

SUPPORT

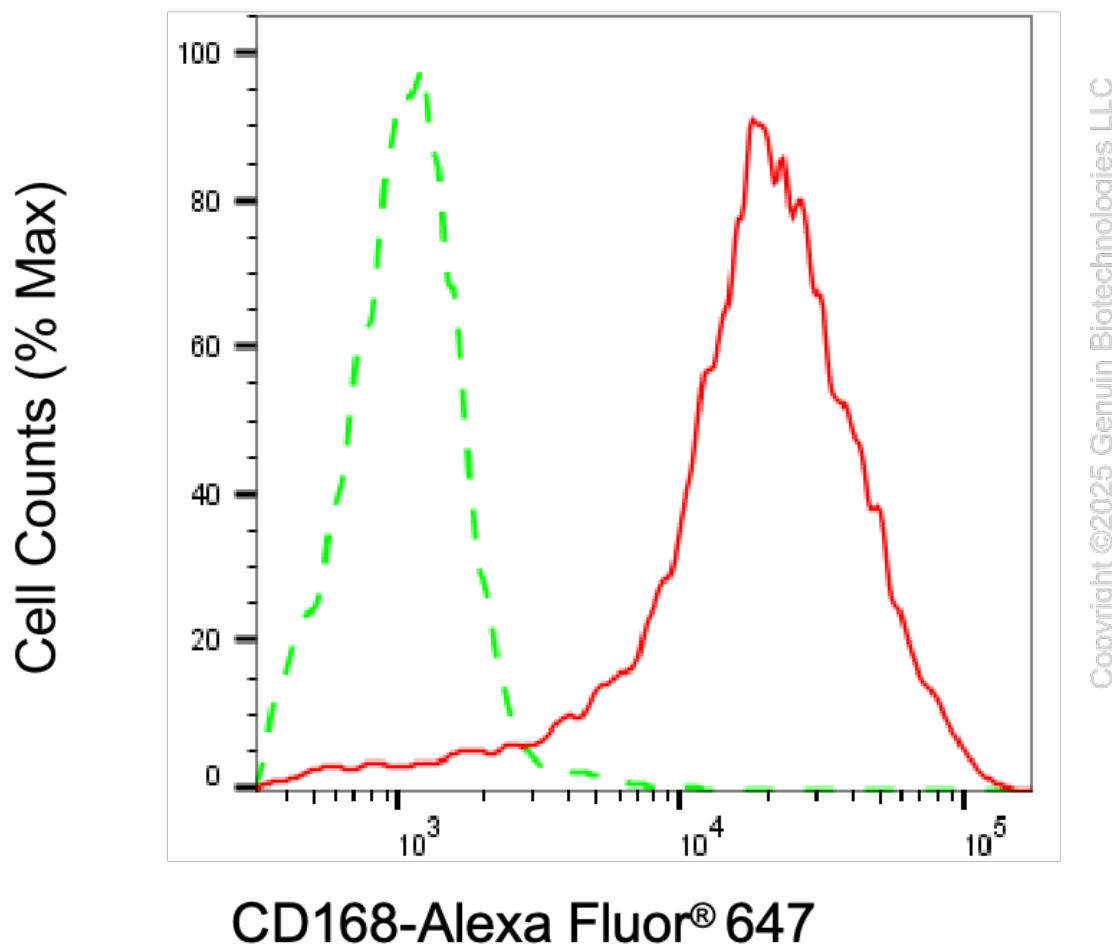
SUPPORT@GENUINBIOTECH.COM
TEL: +1-540-855-7041

ORDERS

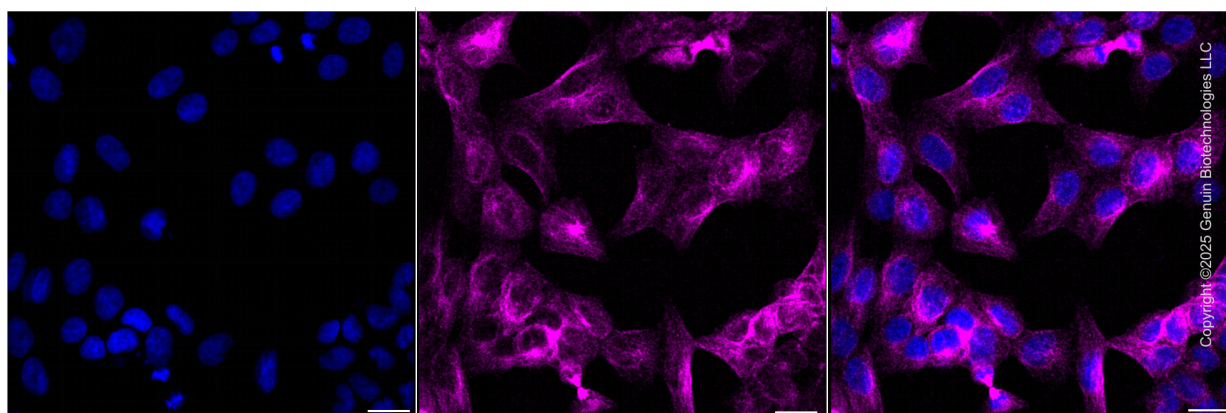
SALES@GENUINBIOTECH.COM
FAX: +1-540-855-7041

WWW.GENUINBIOTECH.COM

Validation Data



Flow cytometric analysis of CD168 expression in HAP-1 cells using anti-CD168 antibody (Cat#64888, 1:2,000). Green, isotype control; red, CD168.



Immunocytochemical staining of HAP-1 cells with anti-CD168 antibody (Cat#64888, 1:1,000) . Nuclei were stained blue with DAPI; CD168 was stained magenta with Alexa Fluor® 647. Images

SUPPORT

SUPPORT@GENUINBIOTECH.COM
TEL: +1-540-855-7041

ORDERS

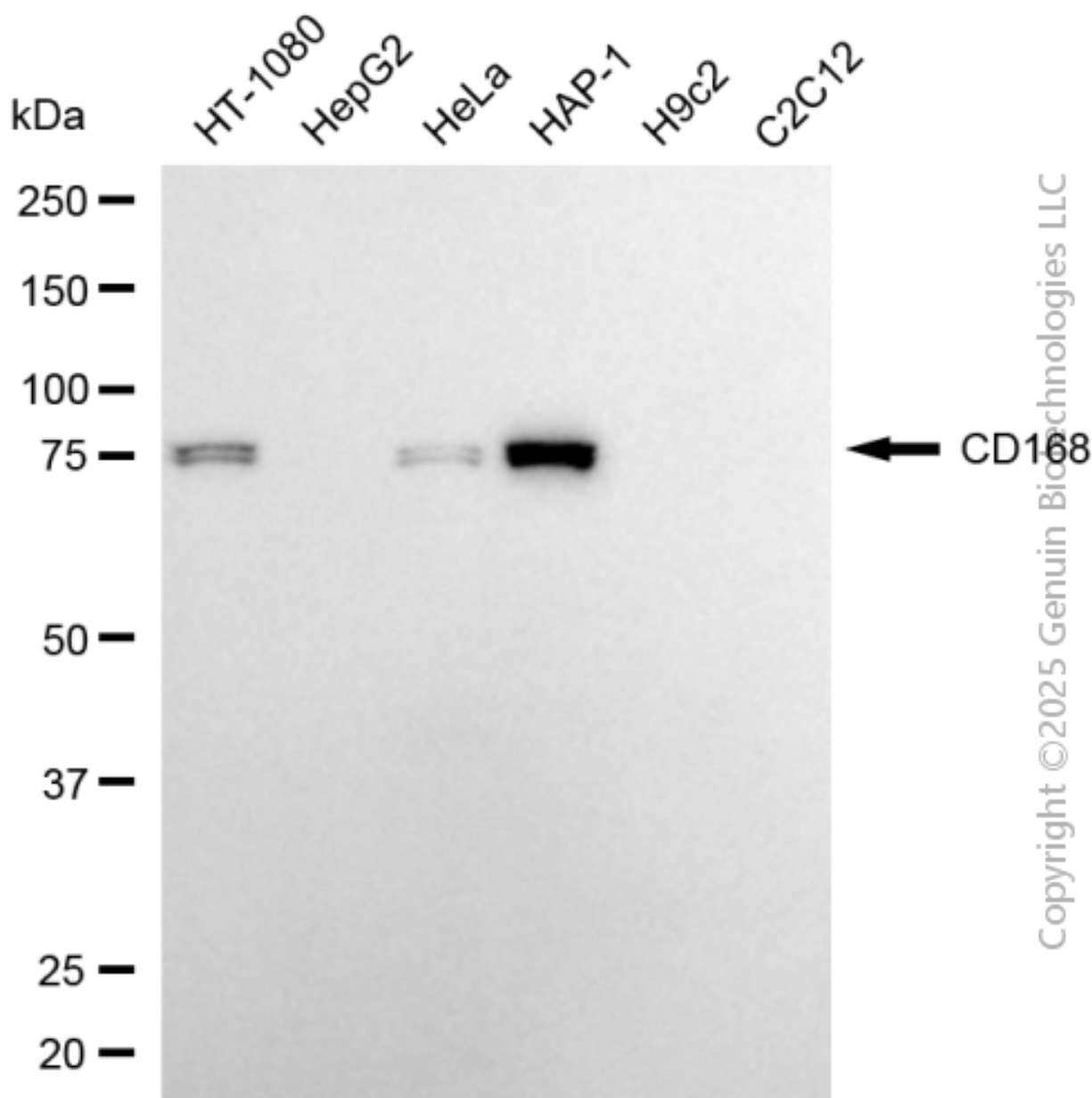
SALES@GENUINBIOTECH.COM
FAX: +1-540-855-7041

WWW.GENUINBIOTECH.COM

KD-Validated Anti-HMMR Rabbit Monoclonal Antibody

PAGE 3

were taken using Leica stellaris 5. Protein abundance based on laser Intensity and smart gain:Low . Scale bar, 20 μ m.



Western blotting analysis using anti-CD168 antibody (Cat#64888). Total cell lysates (30 μ g) from various cell lines were loaded and separated by SDS-PAGE. The blot was incubated with anti-CD168 antibody (Cat#64888, 1:5,000) and HRP-conjugated goat anti-rabbit secondary antibody (Cat#201, 1:20,000) respectively. Image was developed using NaQ™ ECL Substrate Kit (Cat#716).

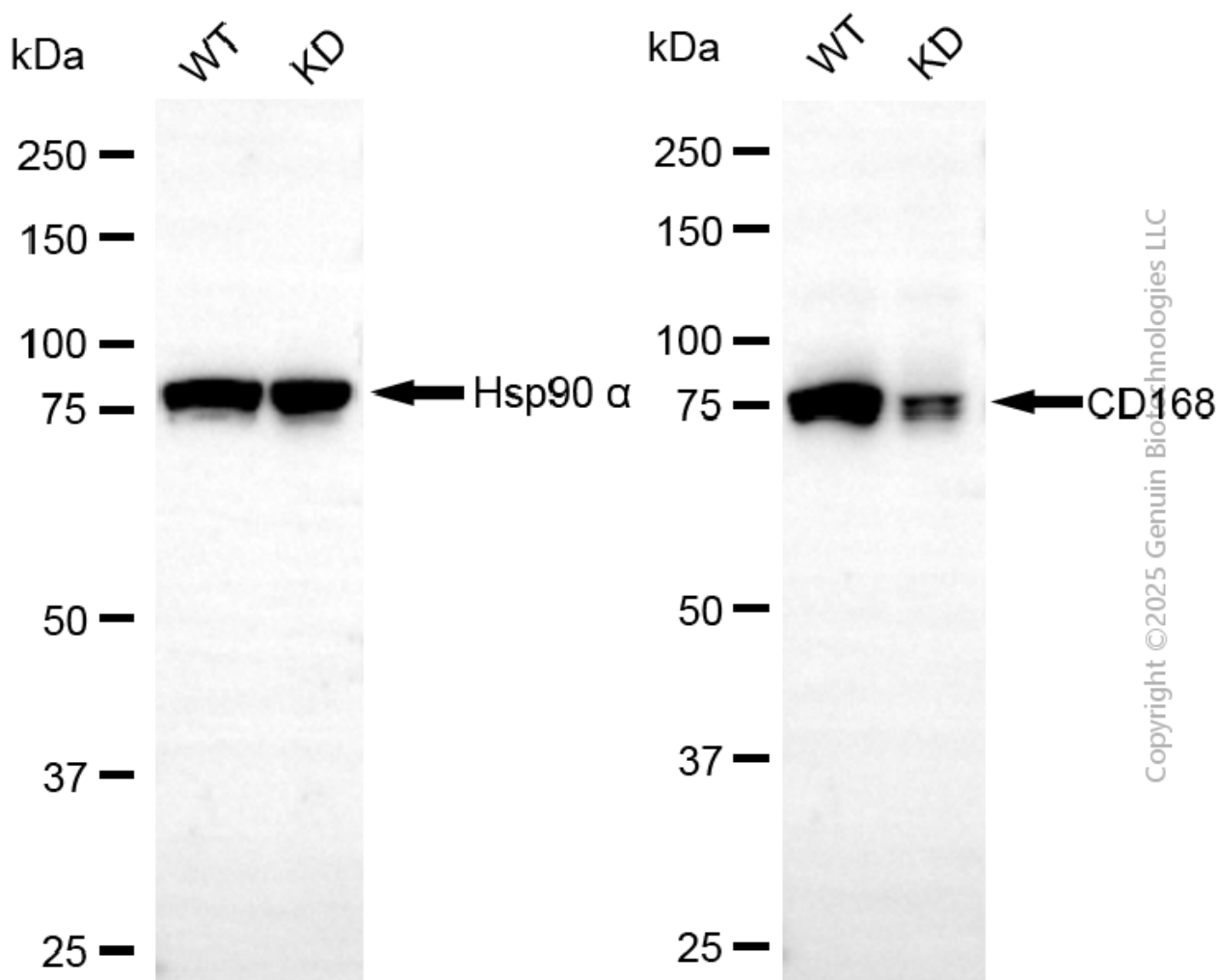
SUPPORT

SUPPORT@GENUINBIOTECH.COM
TEL: +1-540-855-7041

ORDERS

SALES@GENUINBIOTECH.COM
FAX: +1-540-855-7041

WWW.GENUINBIOTECH.COM



Western blotting analysis using anti-CD168 antibody (Cat#64888). CD168 expression in wild-type (WT) and HMMR knockdown (KD) HSHC cells with 20 µg of total cell lysates. Hsp90 α serves as a loading control. The blot was incubated with anti-CD168 antibody (Cat#64888, 1:5,000) and HRP-conjugated goat anti-rabbit secondary antibody (Cat#201, 1:20,000) respectively. Image was developed using NaQ™ ECL Substrate Kit (Cat#716).