

KD-Validated Anti-IFNGR1 Rabbit Monoclonal Antibody



Catalog #: 64900

Aliases

IFNGR1; Interferon Gamma Receptor 1; CD119; IFN-Gamma Receptor 1; IFN-Gamma-R-Alpha; CD119 Antigen; IFN-Gamma-R1; CDw119; IFNGR; Interferon-Gamma Receptor Alpha Chain; Interferon Gamma Receptor Alpha-Chain; Immune Interferon Receptor 1; Antiviral Protein, Type 2; AVP, Type 2; IMD27A; IMD27B

Background

Gene Name: IFNGR1

NCBI Gene Entry: [3459](#)

UniProt Entry: [P15260](#)

Application Information

Molecular Weight: Predicted, 54 kDa; observed, 50-100 kDa

Clonality: Rabbit monoclonal antibody

Clone ID: 24GB13660

Species Reactivity: Human, mouse, rat

Applications Tested: Western blotting (WB), flow cytometry (FCM), immunocytochemistry (IC)

Immunogen

A synthesized peptide derived from human IFNGR1

Isotype

Rabbit IgG

Storage Buffer

Supplied in PBS (pH 7.4) containing 50% glycerol, and 0.02% sodium azide.

Storage

Store at -20 °C for one year.

Recommended Dilutions

Western Blotting (WB): 1:1,000-1:5,000

Immunohistochemistry (IHC): 1:100-1:1,000

Flow Cytometry (FCM) : 1:2,000

SUPPORT

SUPPORT@GENUINBIOTECH.COM
TEL: +1-540-855-7041

ORDERS

SALES@GENUINBIOTECH.COM
FAX: +1-540-855-7041

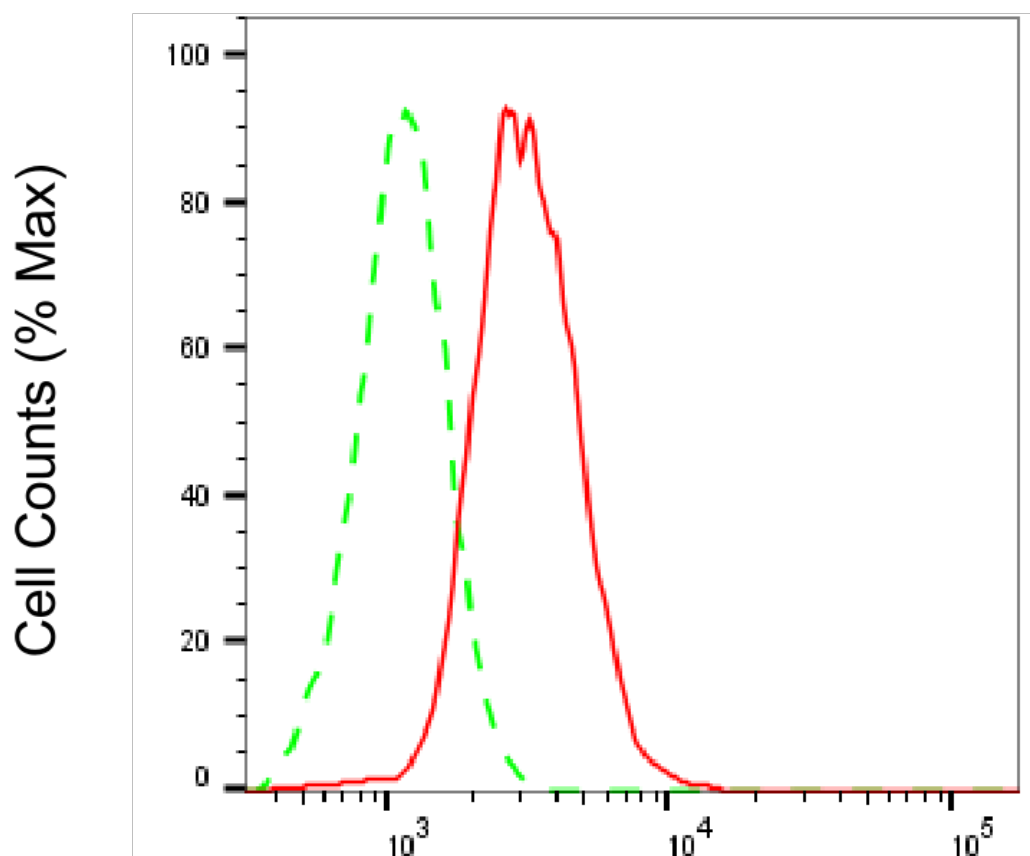
WWW.GENUINBIOTECH.COM

KD-Validated Anti-IFNGR1 Rabbit Monoclonal Antibody

PAGE 2

Note: This product is for research use only.

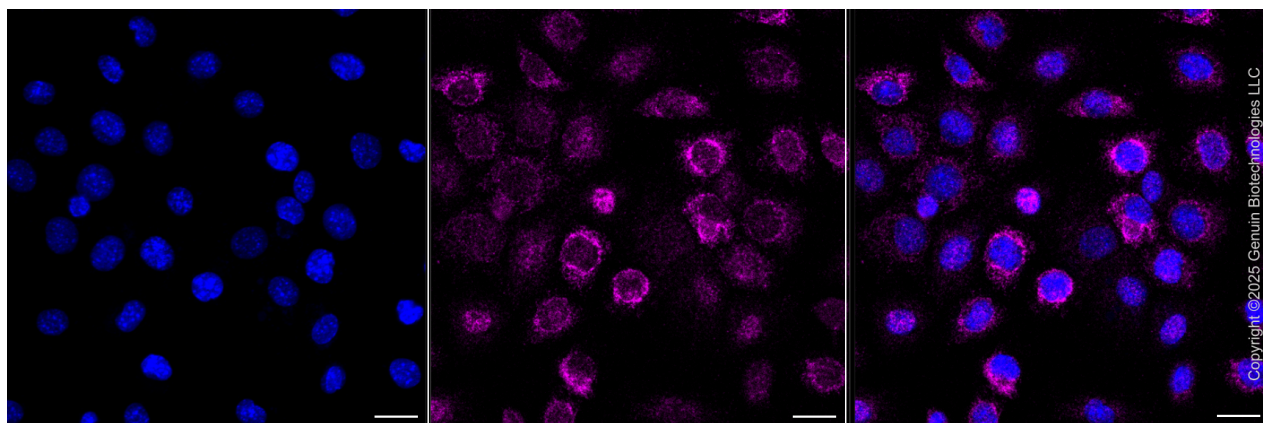
Validation Data



Copyright ©2025 Genuin Biotechnologies LLC

Interferon gamma receptor 1-Alexa Fluor® 647

Flow cytometric analysis of Interferon gamma receptor 1 expression in C2C12 cells using anti-Interferon gamma receptor 1 antibody (Cat#64900, 1:1,000). Green, isotype control; red, Interferon gamma receptor 1.



Copyright ©2025 Genuin Biotechnologies LLC

SUPPORT

SUPPORT@GENUINBIOTECH.COM
TEL: +1-540-855-7041

ORDERS

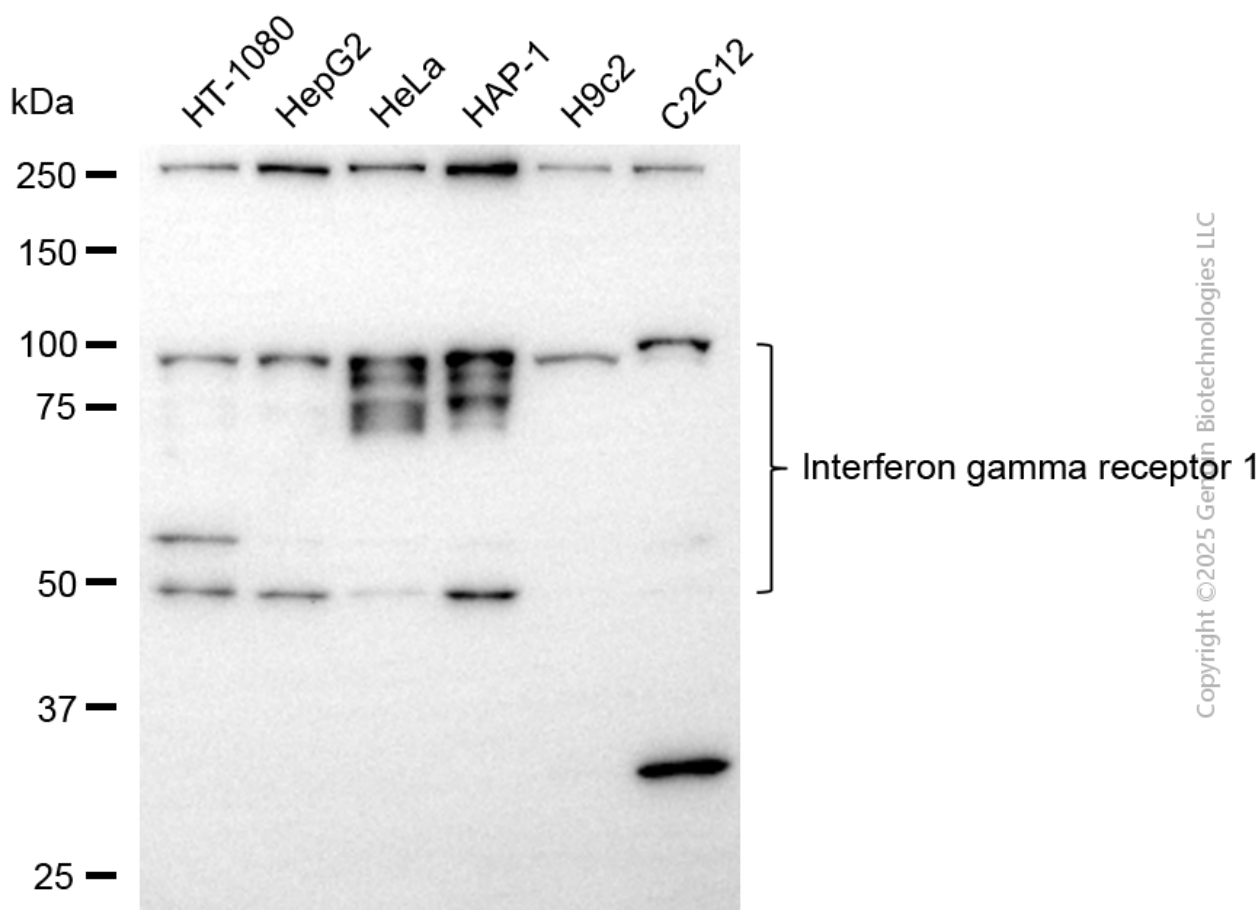
SALES@GENUINBIOTECH.COM
FAX: +1-540-855-7041

WWW.GENUINBIOTECH.COM

KD-Validated Anti-IFNGR1 Rabbit Monoclonal Antibody

PAGE 3

Immunocytochemical staining of C2C12 cells with anti-Interferon gamma receptor 1 antibody (Cat#64900, 1:1,000). Nuclei were stained blue with DAPI; Interferon gamma receptor 1 was stained magenta with Alexa Fluor® 647. Images were taken using Leica stellaris 5. Protein abundance based on laser Intensity and smart gain: Medium. Scale bar, 20 µm.



Western blotting analysis using anti-interferon gamma receptor 1 antibody (Cat#64900). Total cell lysates (30 µg) from various cell lines were loaded and separated by SDS-PAGE. The blot was incubated with anti-interferon gamma receptor 1 antibody (Cat#64900, 1:5,000) and HRP-conjugated goat anti-rabbit secondary antibody (Cat#201, 1:20,000) respectively. Image was developed using FeQ™ ECL Substrate Kit (Cat#226).

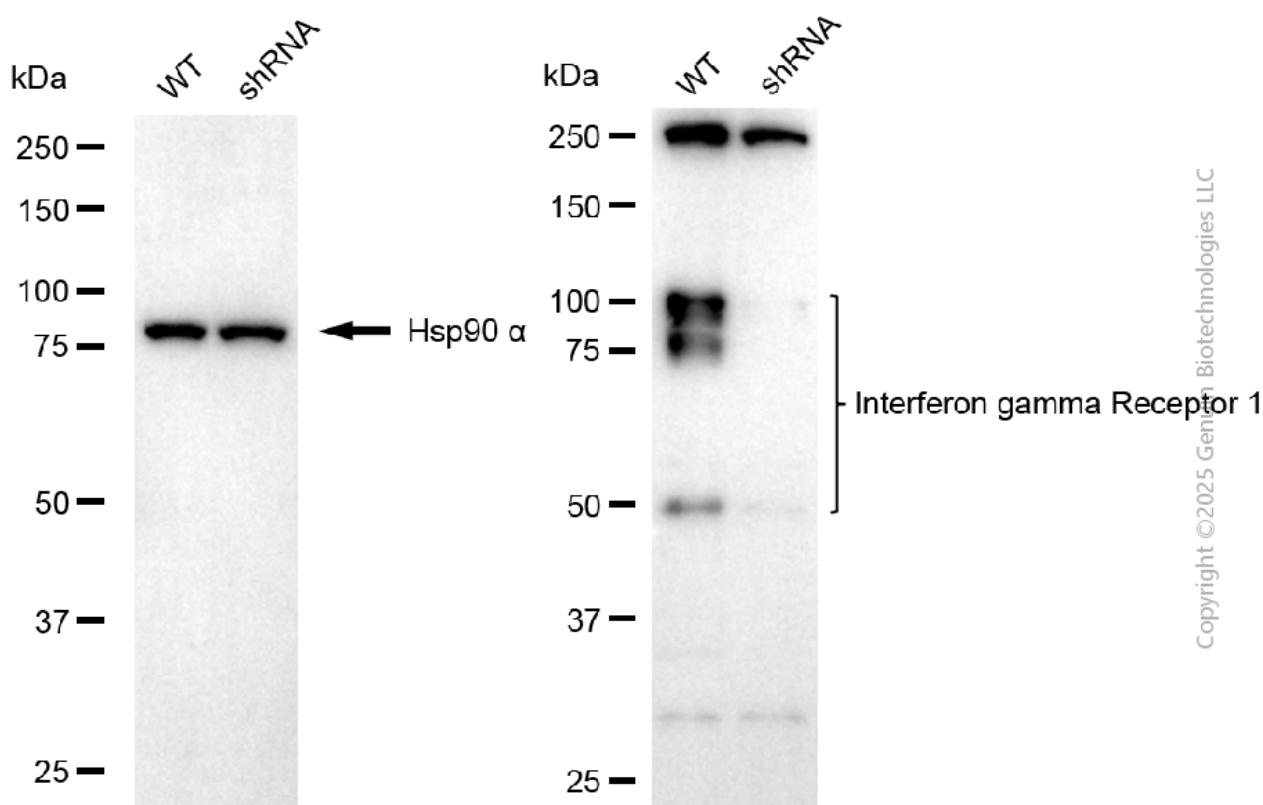
SUPPORT

SUPPORT@GENUINBIOTECH.COM
TEL: +1-540-855-7041

ORDERS

SALES@GENUINBIOTECH.COM
FAX: +1-540-855-7041

WWW.GENUINBIOTECH.COM



Western blotting analysis using anti-interferon gamma receptor 1 antibody (Cat#64900). Interferon gamma receptor 1 expression in wild-type (WT) and interferon gamma receptor 1 (IFNGR1) shRNA knockdown (KD) 293T cells with 20 µg of total cell lysates. Hsp90 α serves as a loading control. The blot was incubated with anti-interferon gamma receptor 1 antibody (Cat#64900, 1:5,000) and HRP-conjugated goat anti-rabbit secondary antibody (Cat#201, 1:20,000) respectively. Image was developed using FeQ™ ECL Substrate Kit (Cat#226).