

KD-Validated Anti-NPC2 Rabbit Monoclonal Antibody



Catalog #: 64907

Aliases

NPC2; NPC Intracellular Cholesterol Transporter 2; HE1; EDDM1; Niemann-Pick Disease Type C2 Protein; Human Epididymis-Specific Protein 1; Epididymal Protein 1; NP-C2; Epididymis Secretory Sperm Binding Protein; Tissue-Specific Secretory Protein; Epididymal Secretory Protein E1; Niemann-Pick Disease, Type C2; He1

Background

Gene Name: NPC2

NCBI Gene Entry: [10577](#)

UniProt Entry: [P61916](#)

Application Information

Molecular Weight: Predicted, 17 kDa; observed, 17 kDa

Clonality: Rabbit monoclonal antibody

Clone ID: 24GB13695

Species Reactivity: Human, mouse, rat

Applications Tested: Western blotting (WB), flow cytometry (FCM), immunocytochemistry (IC)

Immunogen

Recombinant protein of human Niemann Pick C2

Isotype

Rabbit IgG

Storage Buffer

Supplied in PBS (pH 7.4) containing 50% glycerol, and 0.02% sodium azide.

Storage

Store at -20 °C for one year.

Recommended Dilutions

Western Blotting (WB): 1:1,000-1:5,000

Flow Cytometry (FCM): 1:2,000

Immunocytochemistry (IC): 1:100-1:1,000

SUPPORT

SUPPORT@GENUINBIOTECH.COM
TEL: +1-540-855-7041

ORDERS

SALES@GENUINBIOTECH.COM
FAX: +1-540-855-7041

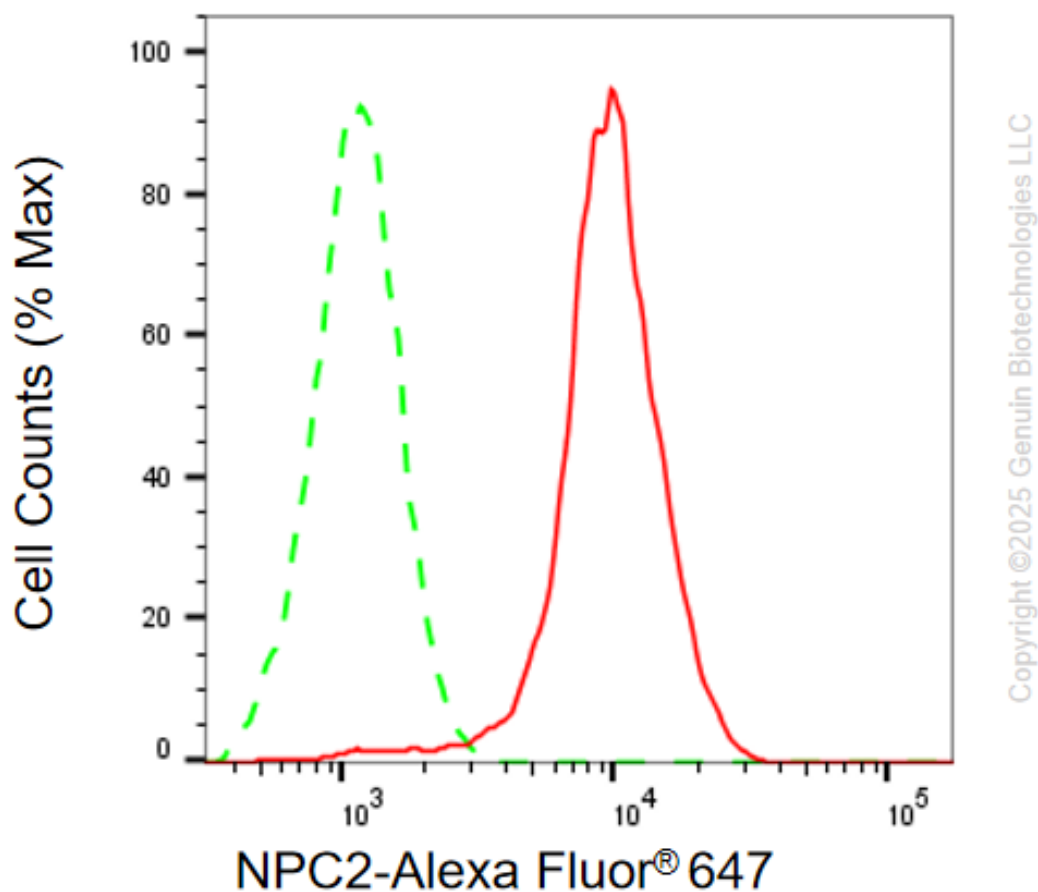
WWW.GENUINBIOTECH.COM

KD-Validated Anti-NPC2 Rabbit Monoclonal Antibody

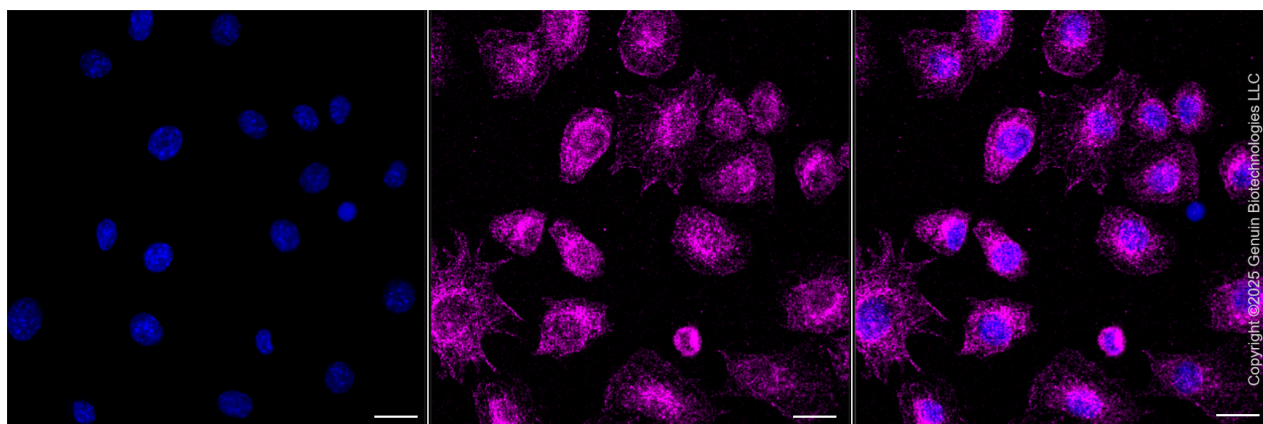
PAGE 2

Note: This product is for research use only.

Validation Data



Flow cytometric analysis of NPC2 expression in C2C12 cells using anti-NPC2 antibody (Cat#64907, 1:1,000). Green, isotype control; red, NPC2.



SUPPORT

SUPPORT@GENUINBIOTECH.COM
TEL: +1-540-855-7041

ORDERS

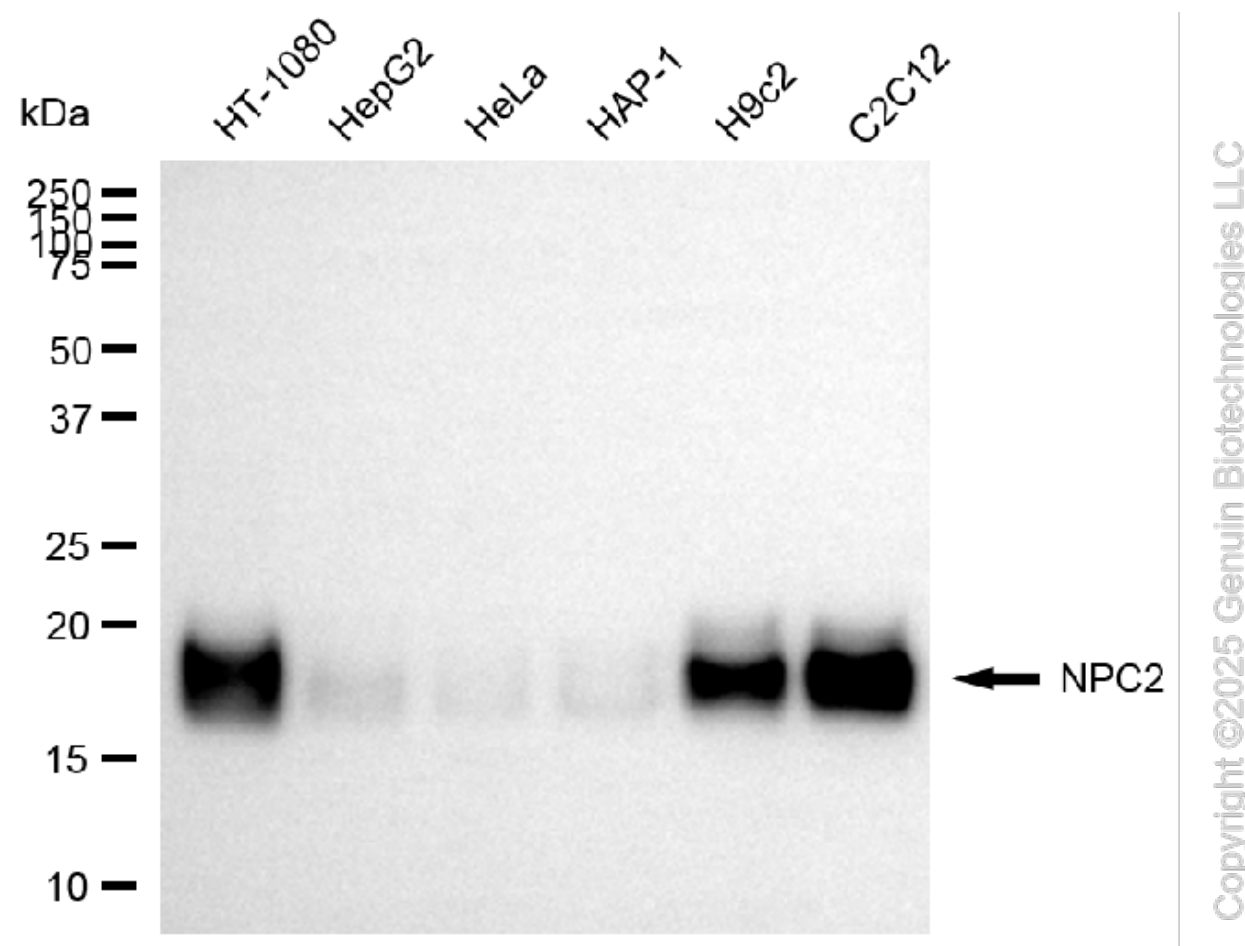
SALES@GENUINBIOTECH.COM
FAX: +1-540-855-7041

WWW.GENUINBIOTECH.COM

KD-Validated Anti-NPC2 Rabbit Monoclonal Antibody

PAGE 3

Immunocytochemical staining of C2C12 cells with anti-NPC2 antibody (Cat#64907, 1:1,000). Nuclei were stained blue with DAPI; NPC2 was stained magenta with Alexa Fluor® 647. Images were taken using Leica stellaris 5. Protein abundance based on laser Intensity and smart gain: Medium. Scale bar, 20 μ m.



Western blotting analysis using anti-NPC2 antibody (Cat#64907). Total cell lysates (30 μ g) from various cell lines were loaded and separated by SDS-PAGE. The blot was incubated with anti-NPC2 antibody (Cat#64907, 1:5,000) and HRP-conjugated goat anti-rabbit secondary antibody (Cat#201, 1:20,000) respectively. Image was developed using NaQ™ ECL Substrate Kit (Cat#716).

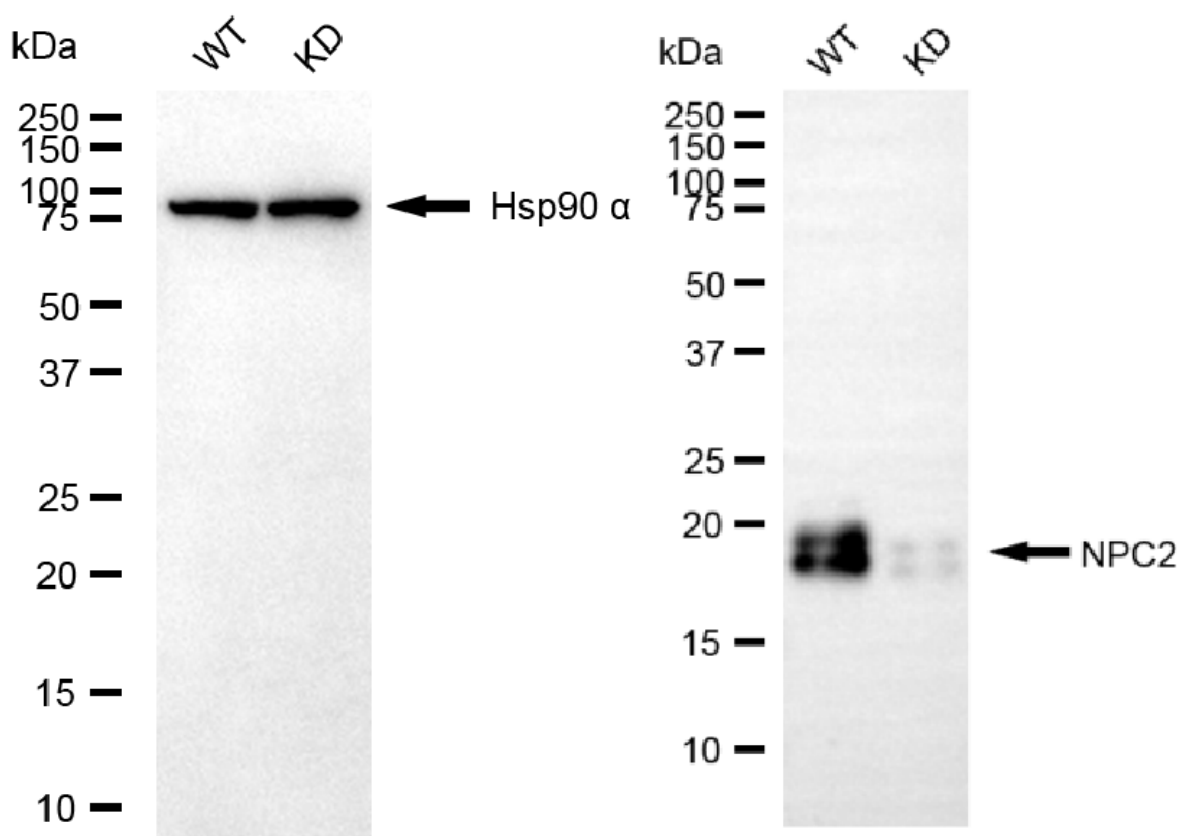
SUPPORT

SUPPORT@GENUINBIOTECH.COM
TEL: +1-540-855-7041

ORDERS

SALES@GENUINBIOTECH.COM
FAX: +1-540-855-7041

WWW.GENUINBIOTECH.COM



Western blotting analysis using anti-NPC2 antibody (Cat#64907). NPC2 expression in wild-type (WT) and NPC2 knockdown (KD) HeLa cells with 20 µg of total cell lysates. Hsp90 α serves as a loading control. The blot was incubated with anti-NPC2 antibody (Cat#64907, 1:5,000) and HRP-conjugated goat anti-rabbit secondary antibody (Cat#201, 1:20,000) respectively. Image was developed using NaQ™ ECL Substrate Kit (Cat#716).