

KD-Validated Anti-NTH1 Rabbit Monoclonal Antibody



Catalog #: 64908

Aliases

NTHL1; Nth Like DNA Glycosylase 1; OCTS3; NTH1; Bifunctional DNA N-Glycosylase/DNA-(Apurinic Or Apyrimidinic Site) Lyase; Endonuclease III-Like Protein 1; DNA Glycosylase/AP Lyase; HNTH1; Bifunctional DNA N-Glycosylase/DNA-(Apurinic Or Apyrimidinic Site) Lyase; Nth Endonuclease III-Like 1 (E. Coli); Nth (E.Coli Endonuclease III)-Like 1; Nth Endonuclease III-Like 1; DNA Glycosylase/AP Lyase; EC 4.2.99.18; EC 3.2.2.-;FAP3

Background

Gene Name: NTHL1

NCBI Gene Entry: [4913](#)

UniProt Entry: [P78549](#)

Application Information

Molecular Weight: Predicted, 34 kDa; observed, 34 kDa

Clonality: Rabbit monoclonal antibody

Clone ID: 24GB13700

Species Reactivity: Human, rat

Applications Tested: Western blotting (WB), flow cytometry (FCM), immunocytochemistry (IC)

Immunogen

Recombinant protein of human NTH1

Isotype

Rabbit IgG

Storage Buffer

Supplied in PBS (pH 7.4) containing 50% glycerol, and 0.02% sodium azide.

Storage

Store at -20 °C for one year.

Recommended Dilutions

Western Blotting (WB): 1:1,000-1:5,000

Flow Cytometry (FCM): 1:2,000

Immunocytochemistry (IC): 1:100-1:1,000

SUPPORT

SUPPORT@GENUINBIOTECH.COM
TEL: +1-540-855-7041

ORDERS

SALES@GENUINBIOTECH.COM
FAX: +1-540-855-7041

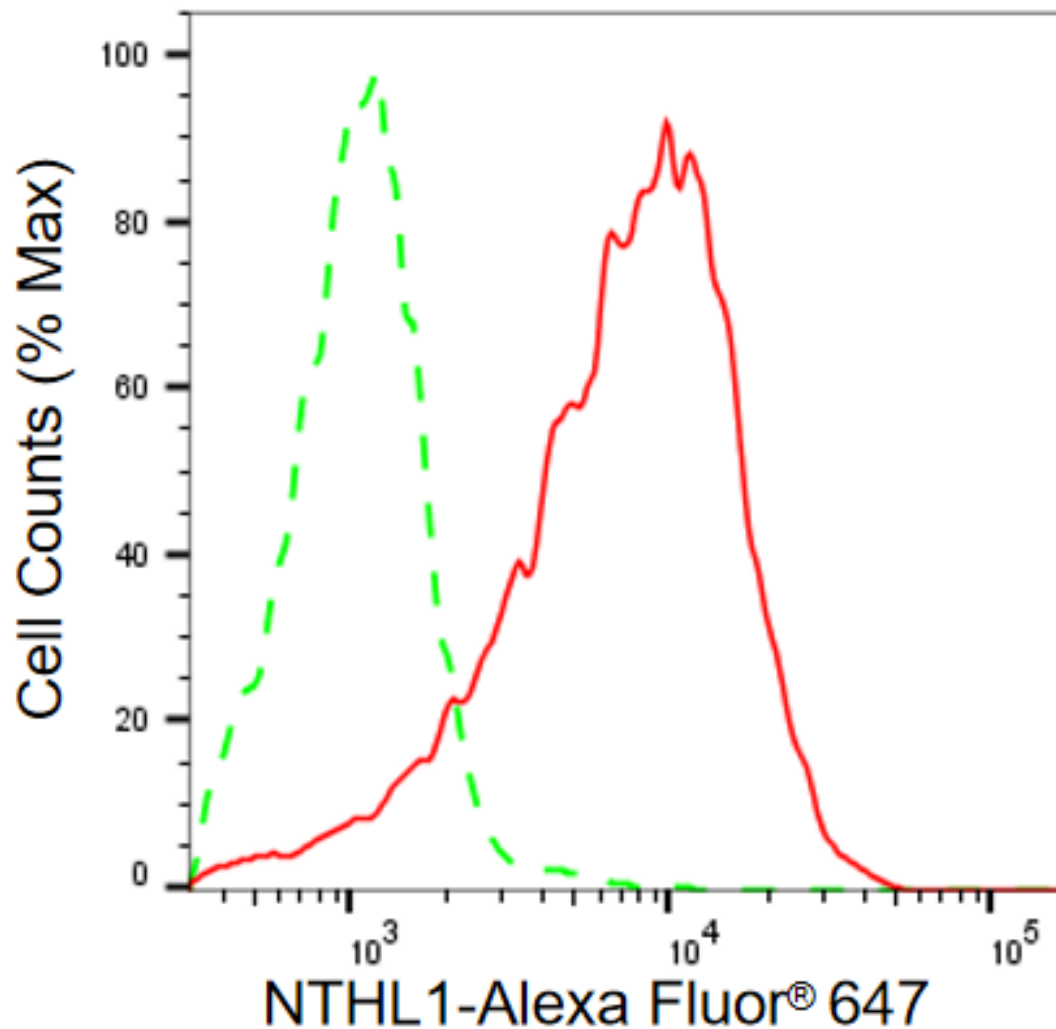
WWW.GENUINBIOTECH.COM

KD-Validated Anti-NTH1 Rabbit Monoclonal Antibody

PAGE 2

Note: This product is for research use only.

Validation Data



Copyright ©2025 Genuin Biotechnologies LLC

Flow cytometric analysis of NTHL1 expression in HAP-1 cells using anti-NTHL1 antibody (Cat#64908, 1:2,000). Green, isotype control; red, NTHL1.

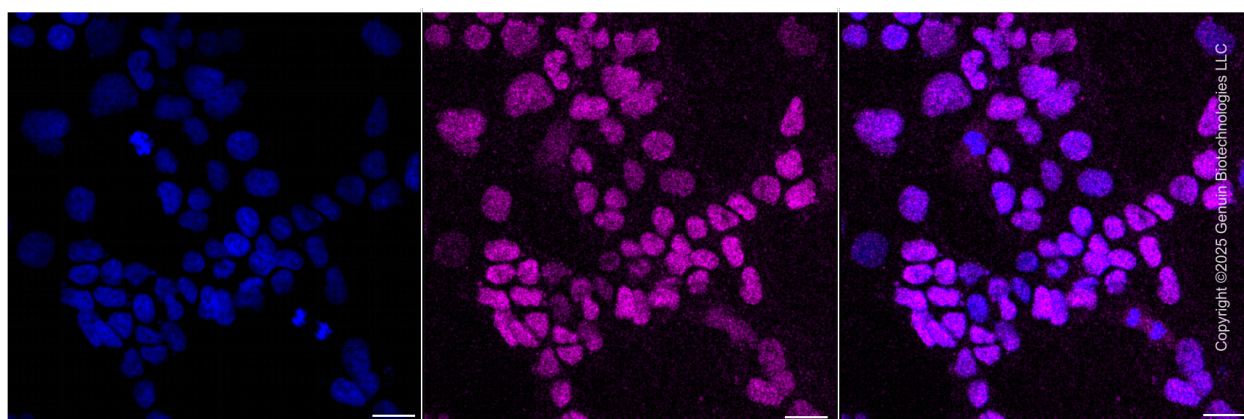
SUPPORT

SUPPORT@GENUINBIOTECH.COM
TEL: +1-540-855-7041

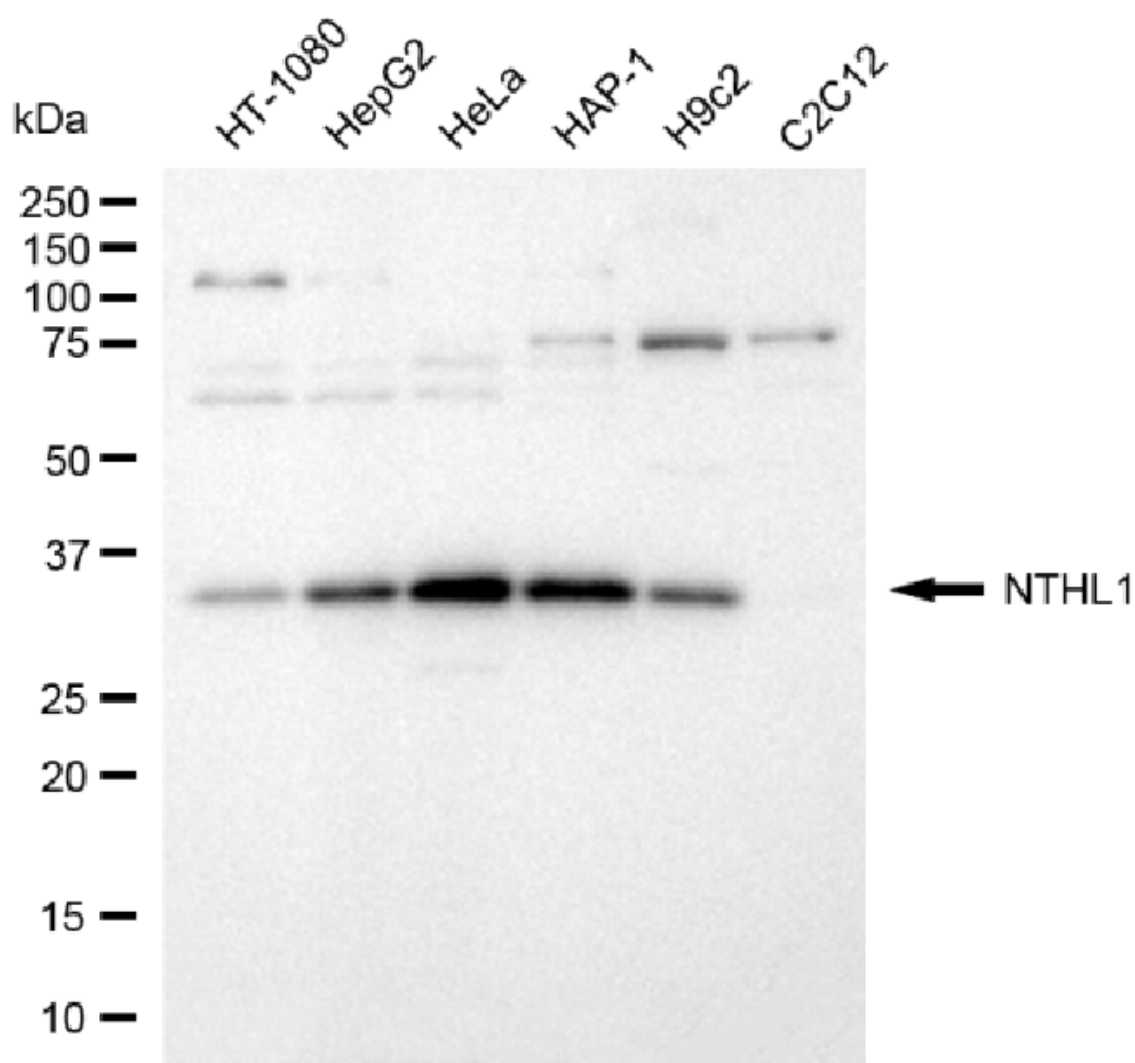
ORDERS

SALES@GENUINBIOTECH.COM
FAX: +1-540-855-7041

WWW.GENUINBIOTECH.COM



Immunocytochemical staining of HAP-1 cells with anti-NTHL1 antibody (Cat#64908, 1:1,000) . Nuclei were stained blue with DAPI; NTHL1 was stained magenta with Alexa Fluor® 647. Images were taken using Leica stellaris 5. Protein abundance based on laser Intensity and smart gain:Low . Scale bar, 20 μ m.



Copyright ©2025 Genuin Biotechnologies LLC

SUPPORT

SUPPORT@GENUINBIOTECH.COM
TEL: +1-540-855-7041

ORDERS

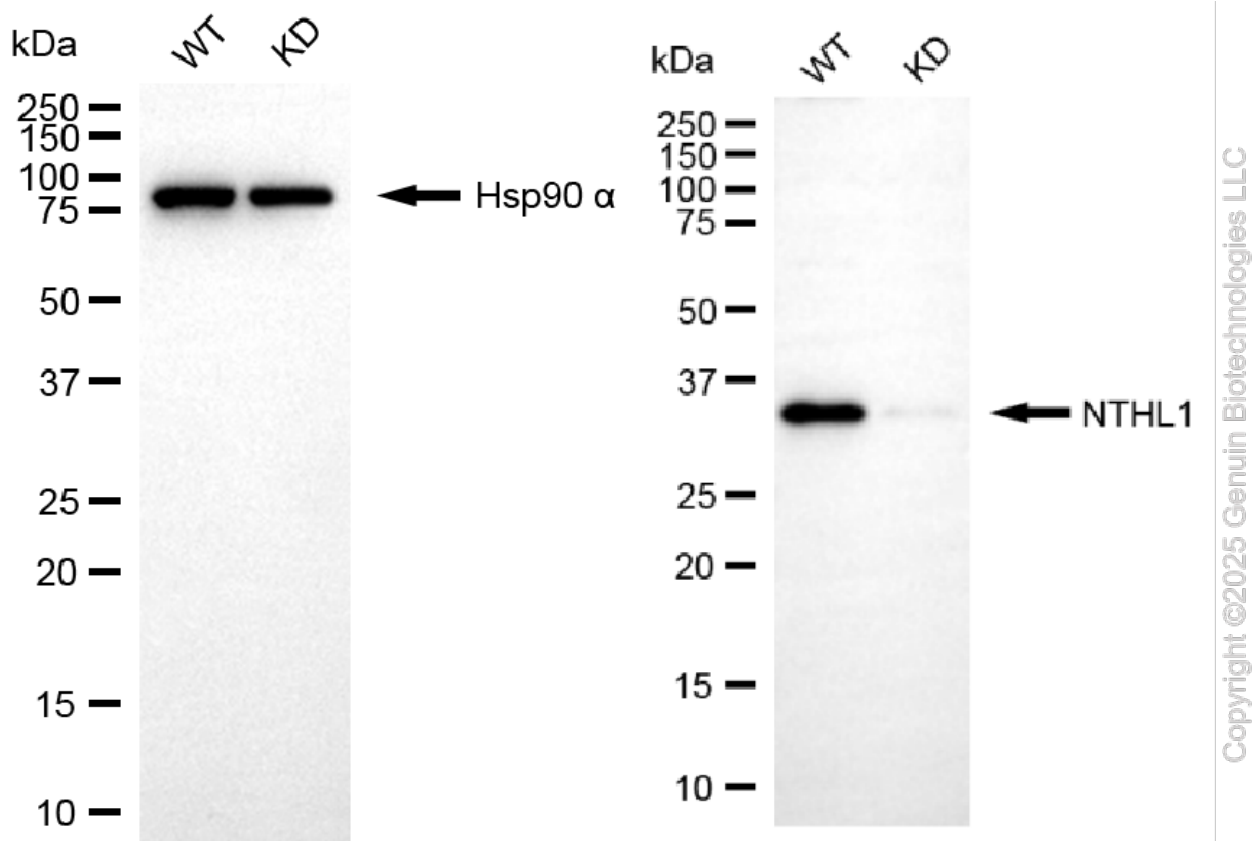
SALES@GENUINBIOTECH.COM
FAX: +1-540-855-7041

WWW.GENUINBIOTECH.COM

KD-Validated Anti-NTHL1 Rabbit Monoclonal Antibody

PAGE 4

Western blotting analysis using anti-NTHL1 antibody (Cat#64908). Total cell lysates (30 µg) from various cell lines were loaded and separated by SDS-PAGE. The blot was incubated with anti-NTHL1 antibody (Cat#64908, 1:5,000) and HRP-conjugated goat anti-rabbit secondary antibody (Cat#201, 1:20,000) respectively. Image was developed using FeQ™ ECL Substrate Kit (Cat#226).



Western blotting analysis using anti-NTHL1 antibody (Cat#64908). NTHL1 expression in wild-type (WT) and NTHL1 knockdown (KD) HT-1080 cells with 20 µg of total cell lysates. Hsp90 α serves as a loading control. The blot was incubated with anti-NTHL1 antibody (Cat#64908, 1:5,000) and HRP-conjugated goat anti-rabbit secondary antibody (Cat#201, 1:20,000) respectively. Image was developed using NaQ™ ECL Substrate Kit (Cat#716).

SUPPORT

SUPPORT@GENUINBIOTECH.COM
TEL: +1-540-855-7041

ORDERS

SALES@GENUINBIOTECH.COM
FAX: +1-540-855-7041

WWW.GENUINBIOTECH.COM