

KD-Validated Anti-PDLIM7 Rabbit Monoclonal Antibody



Catalog #: 64910

Aliases

PDLIM7; PDZ And LIM Domain 7; ENIGMA; PDZ And LIM Domain 7 (Enigma); PDZ And LIM Domain Protein 7; Protein Enigma; LMP; Lim Mineralization Protein 3; LIM Mineralization Protein; LIM Domain Protein; 1110003B01Rik; LMP1; LMP3

Background

Gene Name: PDLIM7

NCBI Gene Entry: [9260](#)

UniProt Entry: [Q9NR12](#)

Application Information

Molecular Weight: Predicted, 150 kDa; observed, 49 kDa

Clonality: Rabbit monoclonal antibody

Clone ID: 24GB13710

Species Reactivity: Human, rat

Applications Tested: Western blotting (WB), flow cytometry (FCM), immunocytochemistry (IC)

Immunogen

Recombinant protein of human PDLIM7

Isotype

Rabbit IgG

Storage Buffer

Supplied in PBS (pH 7.4) containing 50% glycerol, and 0.02% sodium azide.

Storage

Store at -20 °C for one year.

Recommended Dilutions

Western Blotting (WB): 1:1,000-1:5,000

Immunohistochemistry (IHC): 1:100-1:1,000

Flow Cytometry (FCM) : 1:2,000

Note: This product is for research use only.

SUPPORT

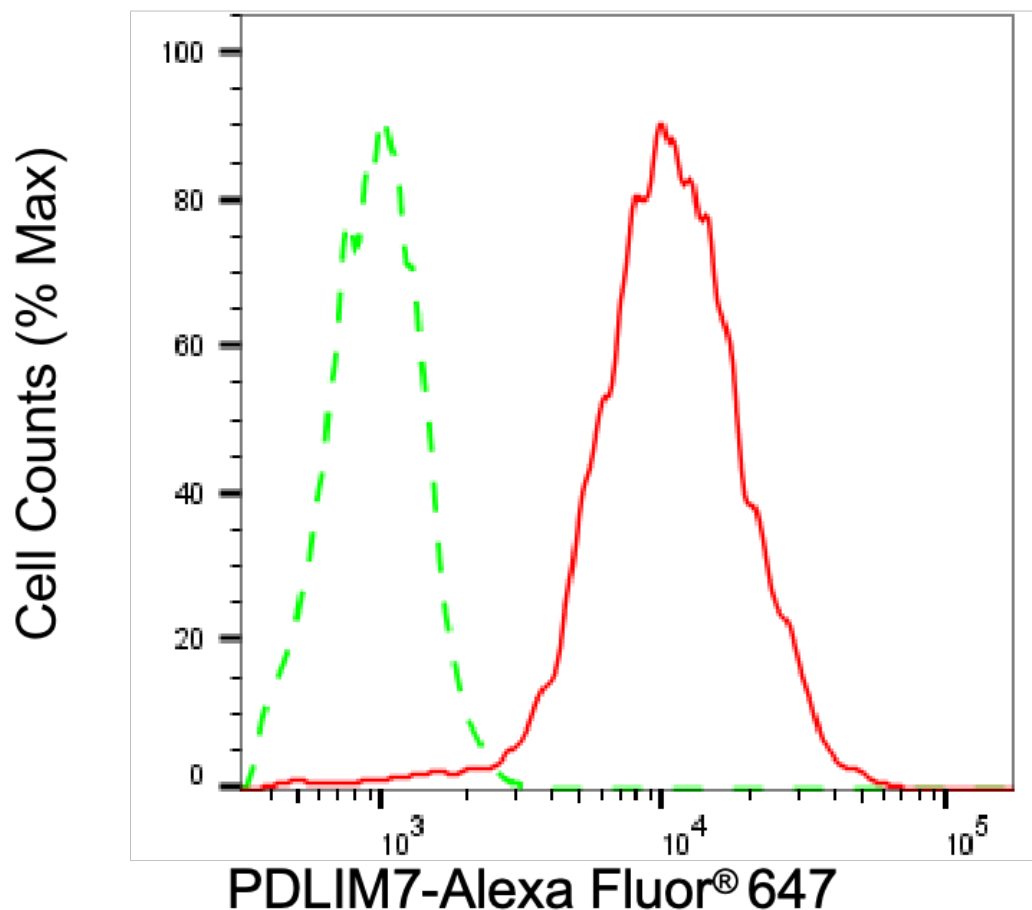
SUPPORT@GENUINBIOTECH.COM
TEL: +1-540-855-7041

ORDERS

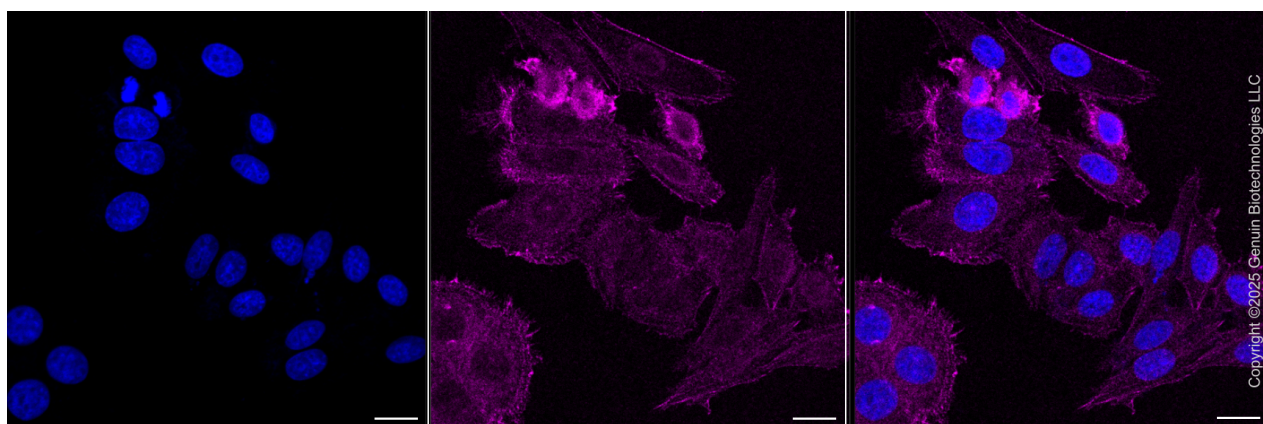
SALES@GENUINBIOTECH.COM
FAX: +1-540-855-7041

WWW.GENUINBIOTECH.COM

Validation Data



Flow cytometric analysis of PDLIM7 expression in HepG2 cells using anti-PDLIM7 antibody (Cat#64910, 1:2,000). Green, isotype control; red, PDLIM7.



Immunocytochemical staining of HepG2 cells with anti-PDLIM7 antibody (Cat#64910, 1:1,000) . Nuclei were stained blue with DAPI; PDLIM7 was stained magenta with Alexa Fluor® 647.

SUPPORT

SUPPORT@GENUINBIOTECH.COM
TEL: +1-540-855-7041

ORDERS

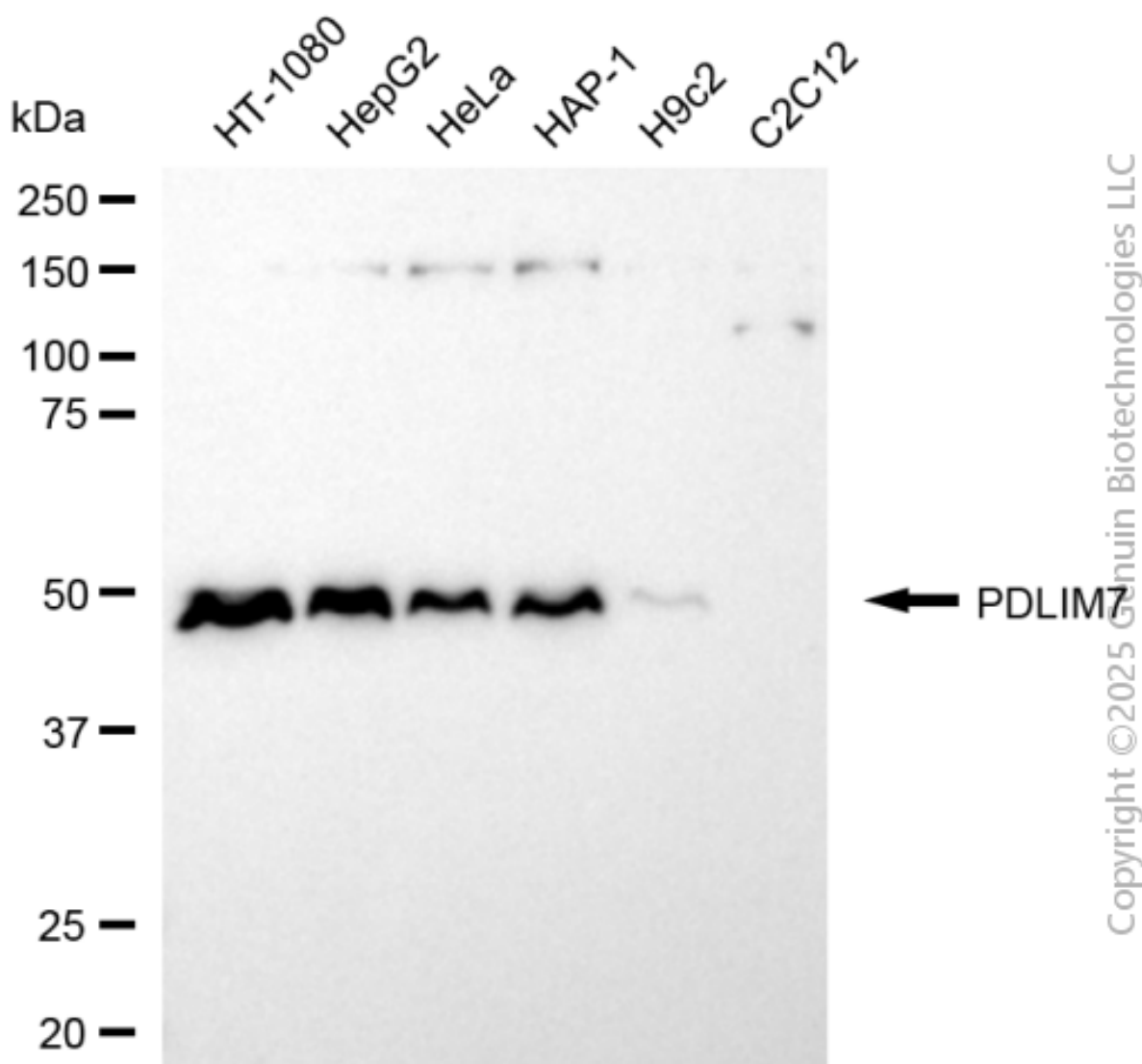
SALES@GENUINBIOTECH.COM
FAX: +1-540-855-7041

WWW.GENUINBIOTECH.COM

KD-Validated Anti-PDLIM7 Rabbit Monoclonal Antibody

PAGE 3

Images were taken using Leica stellaris 5. Protein abundance based on laser Intensity and smart gain: Medium. Scale bar, 20 μ m.



Western blotting analysis using anti-PDLIM7 antibody (Cat#64910). Total cell lysates (30 μ g) from various cell lines were loaded and separated by SDS-PAGE. The blot was incubated with anti-PDLIM7 antibody (Cat#64910, 1:5,000) and HRP-conjugated goat anti-rabbit secondary antibody (Cat#201, 1:20,000) respectively. Image was developed using NaQ™ ECL Substrate Kit (Cat#716).

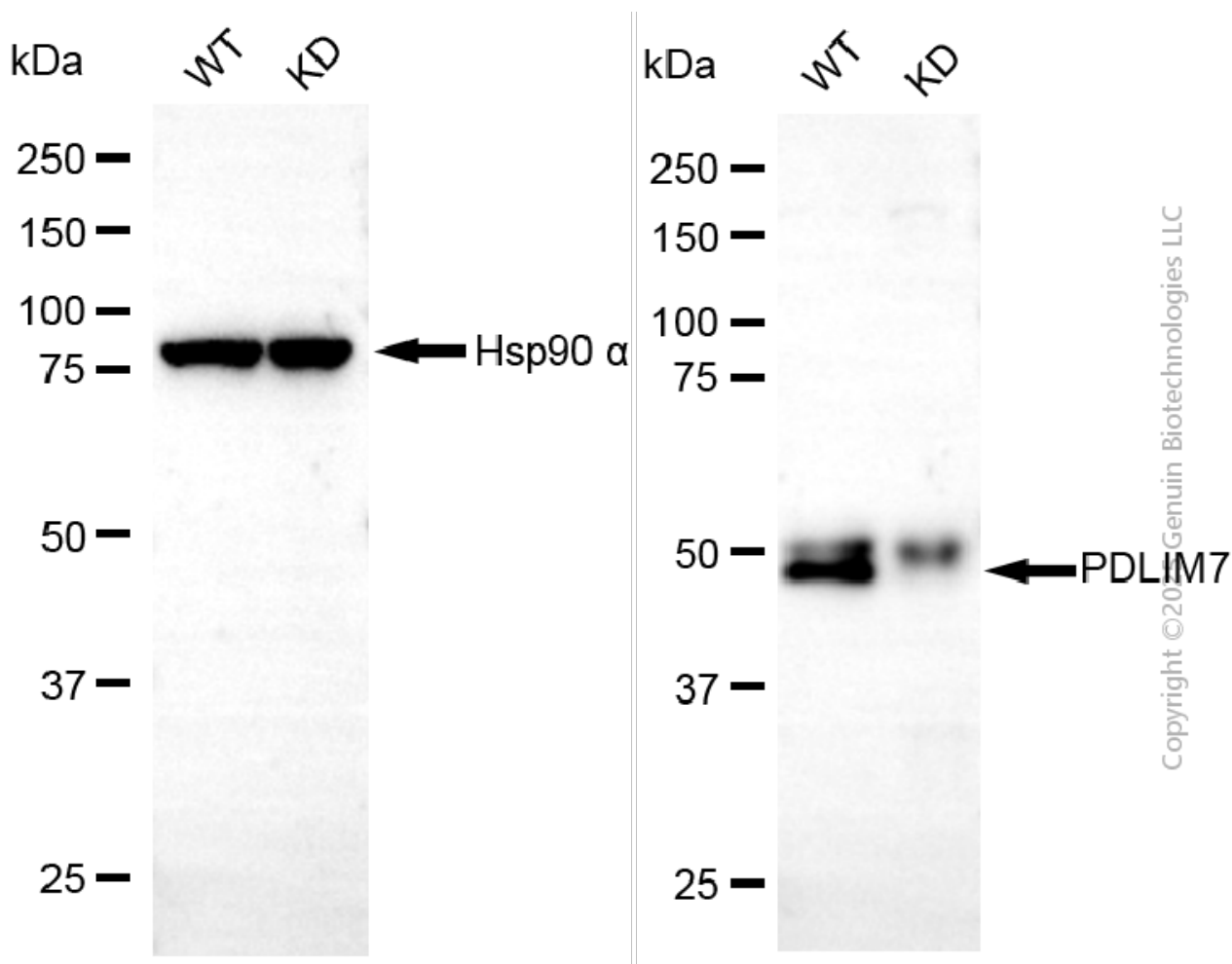
SUPPORT

SUPPORT@GENUINBIOTECH.COM
TEL: +1-540-855-7041

ORDERS

SALES@GENUINBIOTECH.COM
FAX: +1-540-855-7041

WWW.GENUINBIOTECH.COM



Western blotting analysis using anti-PDLIM7 antibody (Cat#64910). PDLIM7 expression in wild-type (WT) and PDLIM7 knockdown (KD) HSHC cells with 20 µg of total cell lysates. Hsp90 α serves as a loading control. The blot was incubated with anti-PDLIM7 antibody (Cat#64910, 1:5,000) and HRP-conjugated goat anti-rabbit secondary antibody (Cat#201, 1:20,000) respectively. Image was developed using NaQ™ ECL Substrate Kit (Cat#716).