

KD-Validated Anti-NDUFB1 Rabbit Monoclonal Antibody



Catalog #: 64915

Aliases

NDUFB1; NADH:Ubiquinone Oxidoreductase Subunit B1; CI-MNLL; MNLL; NADH Dehydrogenase [Ubiquinone] 1 Beta Subcomplex Subunit 1; NADH Dehydrogenase (Ubiquinone) 1 Beta Subcomplex, 1, 7kDa; NADH-Ubiquinone Oxidoreductase MNLL Subunit; Complex I MNLL Subunit; Complex I-MNLL; NADH Dehydrogenase (Ubiquinone) 1 Beta Subcomplex, 1 (7kD, MNLL); CI-SGDH

Background

Gene Name: NDUFB1

NCBI Gene Entry: [4707](#)

UniProt Entry: [O75438](#)

Application Information

Molecular Weight: Predicted, 7 kDa; observed, 10 kDa

Clonality: Rabbit monoclonal antibody

Clone ID: 24GB13735

Species Reactivity: Human

Applications Tested: Western blotting (WB), flow cytometry (FCM), immunocytochemistry (IC)

Immunogen

Recombinant protein of human NDUFB1

Isotype

Rabbit IgG

Storage Buffer

Supplied in PBS (pH 7.4) containing 50% glycerol, and 0.02% sodium azide.

Storage

Store at -20 °C for one year.

Recommended Dilutions

Western Blotting (WB): 1:1,000-1:5,000

Flow Cytometry (FCM): 1:2,000

SUPPORT

SUPPORT@GENUINBIOTECH.COM
TEL: +1-540-855-7041

ORDERS

SALES@GENUINBIOTECH.COM
FAX: +1-540-855-7041

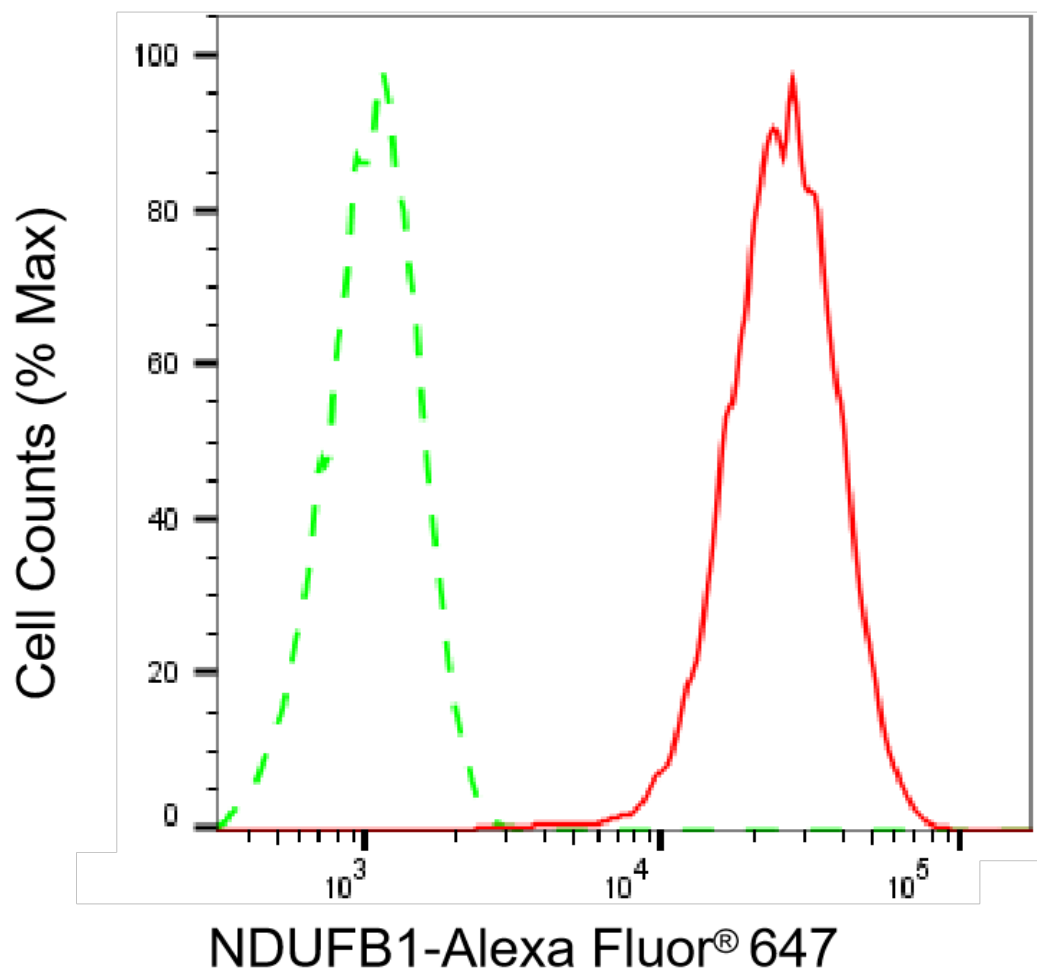
WWW.GENUINBIOTECH.COM

KD-Validated Anti-NDUFB1 Rabbit Monoclonal Antibody

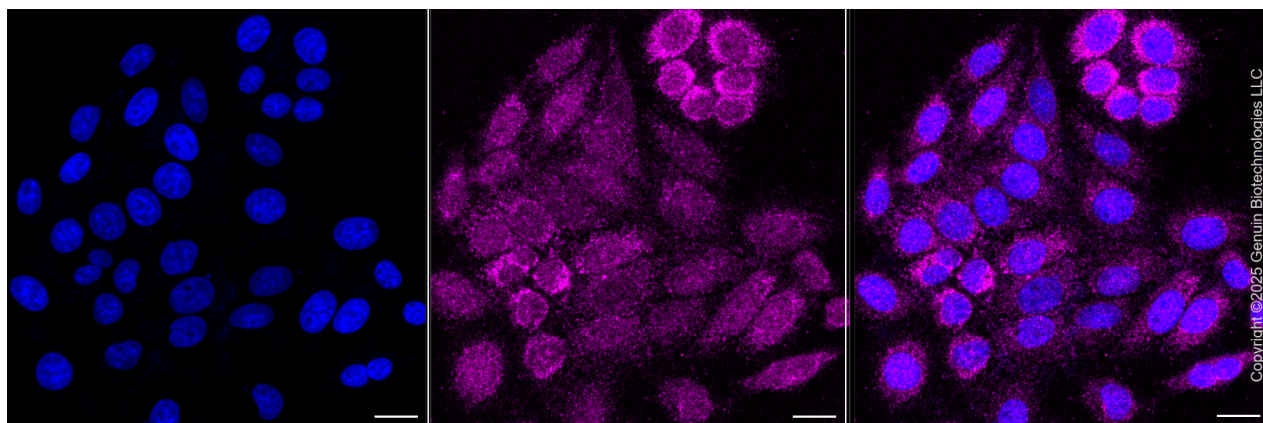
PAGE 2

Note: This product is for research use only.

Validation Data



Flow cytometric analysis of NDUFB1 expression in HepG2 cells using anti-NDUFB1 antibody (Cat#64915, 1:1,000). Green, isotype control; red, NDUFB1.



SUPPORT

SUPPORT@GENUINBIOTECH.COM
TEL: +1-540-855-7041

ORDERS

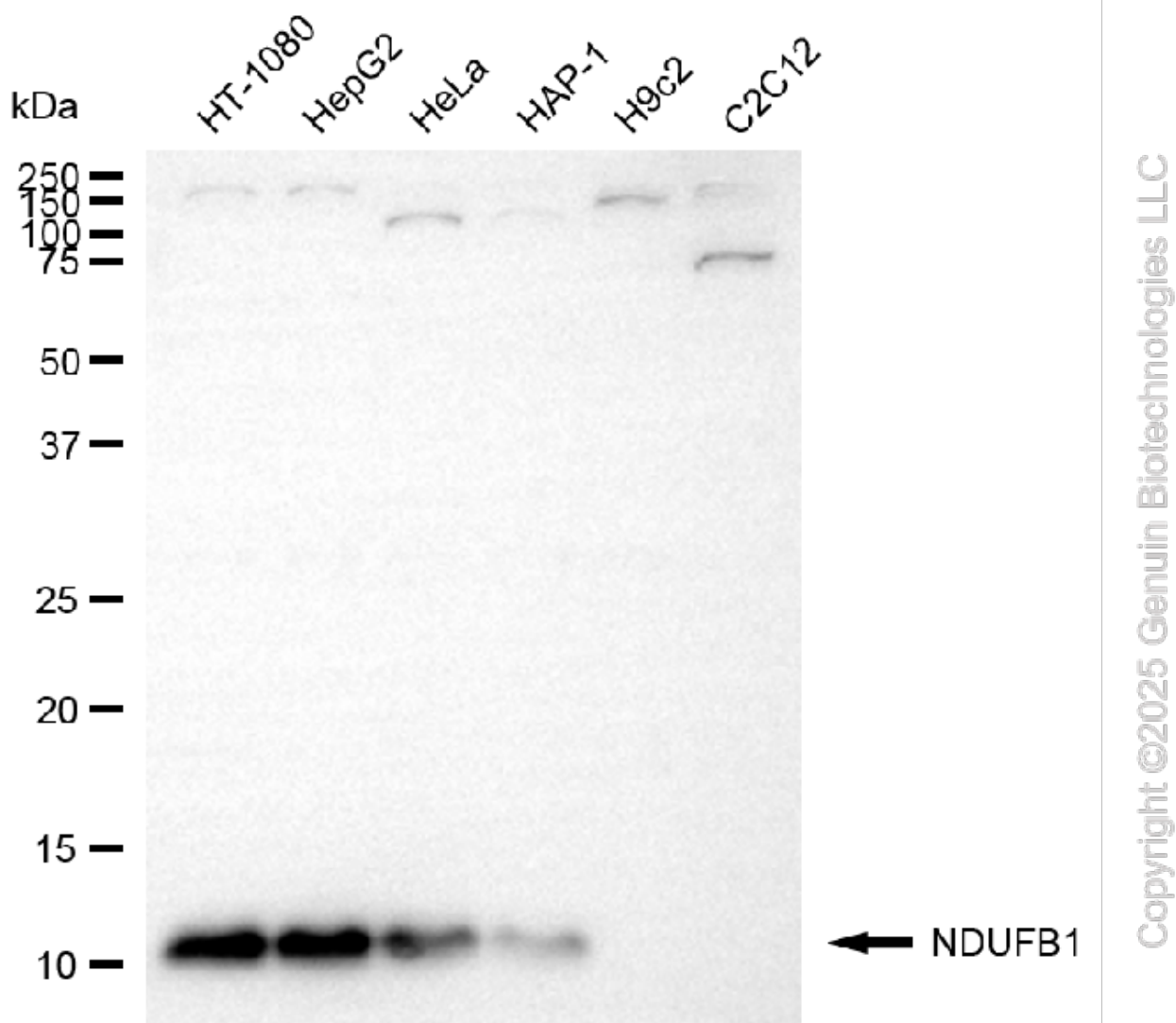
SALES@GENUINBIOTECH.COM
FAX: +1-540-855-7041

WWW.GENUINBIOTECH.COM

KD-Validated Anti-NDUFB1 Rabbit Monoclonal Antibody

PAGE 3

Immunocytochemical staining of HepG2 cells with anti-NDUFB1 antibody (Cat#64915, 1:1000). Nuclei were stained blue with DAPI; NDUFB1 was stained magenta with Alexa Fluor® 647. Images were taken using Leica stellaris 5. Protein abundance based on laser Intensity and smart gain: Medium. Scale bar, 20 μ m.



Western blotting analysis using anti-NDUFB1 antibody (Cat#64915). Total cell lysates (30 μ g) from various cell lines were loaded and separated by SDS-PAGE. The blot was incubated with anti-NDUFB1 antibody (Cat#64915, 1:5,000) and HRP-conjugated goat anti-rabbit secondary antibody (Cat#201, 1:20,000) respectively. Image was developed using FeQ™ ECL Substrate Kit (Cat#226).

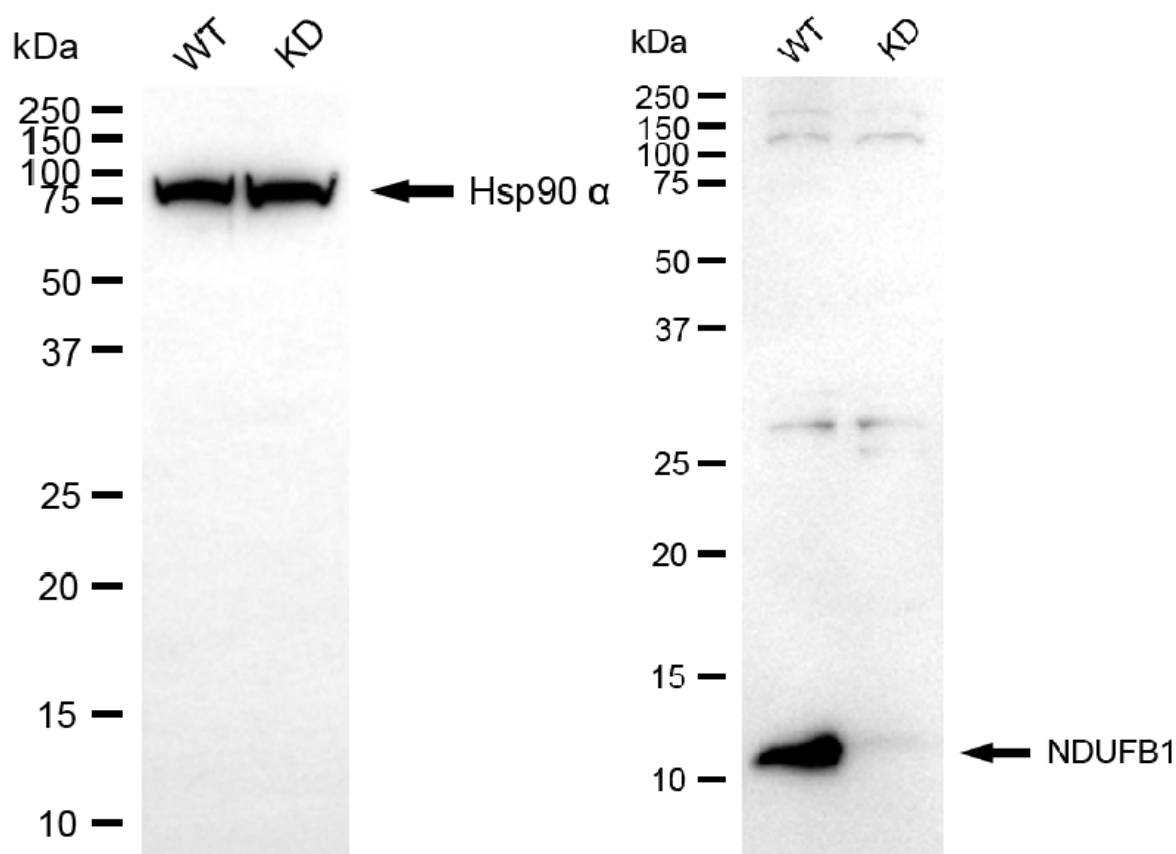
SUPPORT

SUPPORT@GENUINBIOTECH.COM
TEL: +1-540-855-7041

ORDERS

SALES@GENUINBIOTECH.COM
FAX: +1-540-855-7041

WWW.GENUINBIOTECH.COM



Copyright ©2025 Genuin Biotechnologies LLC

Western blotting analysis using anti-NDUFB1 antibody (Cat#64915). NDUFB1 expression in wild-type (WT) and NDUFB1 knockdown (KD) HSHC cells with 20 µg of total cell lysates. Hsp90 α serves as a loading control. The blot was incubated with anti-NDUFB1 antibody (Cat#64915, 1:5,000) and HRP-conjugated goat anti-rabbit secondary antibody (Cat#201, 1:20,000) respectively. Image was developed using FeQ™ ECL Substrate Kit (Cat#226).