

KD-Validated Anti-GRK2 Rabbit Polyclonal Antibody



Catalog #: 64935

Aliases

GRK2; G Protein-Coupled Receptor Kinase 2; BARK1; ADRBK1; Beta-Adrenergic Receptor Kinase 1; EC 2.7.11.15; Beta-ARK-1; Adrenergic, Beta, Receptor Kinase 1; G-Protein Coupled Receptor Kinase 2; Adrenergic Beta Receptor Kinase 1; BETA-ARK1; EC 2.7.11 47; BARK

Background

Gene Name: GRK2

NCBI Gene Entry: [156](#)

UniProt Entry: [P25098](#)

Application Information

Molecular Weight: Predicted, 80 kDa; observed, 75 kDa

Clonality: Rabbit polyclonal antibody

Species Reactivity: Human, mouse, rat

Applications Tested: Western blotting (WB)

Immunogen

A synthesized peptide derived from human GRK2

Isotype

Rabbit IgG

Storage Buffer

Supplied in PBS (pH 7.4) containing 50% glycerol, and 0.02% sodium azide.

Storage

Store at -20 °C for one year.

Recommended Dilutions

Western Blotting (WB): 1:1,000-1:5,000

Note: This product is for research use only.

Validation Data

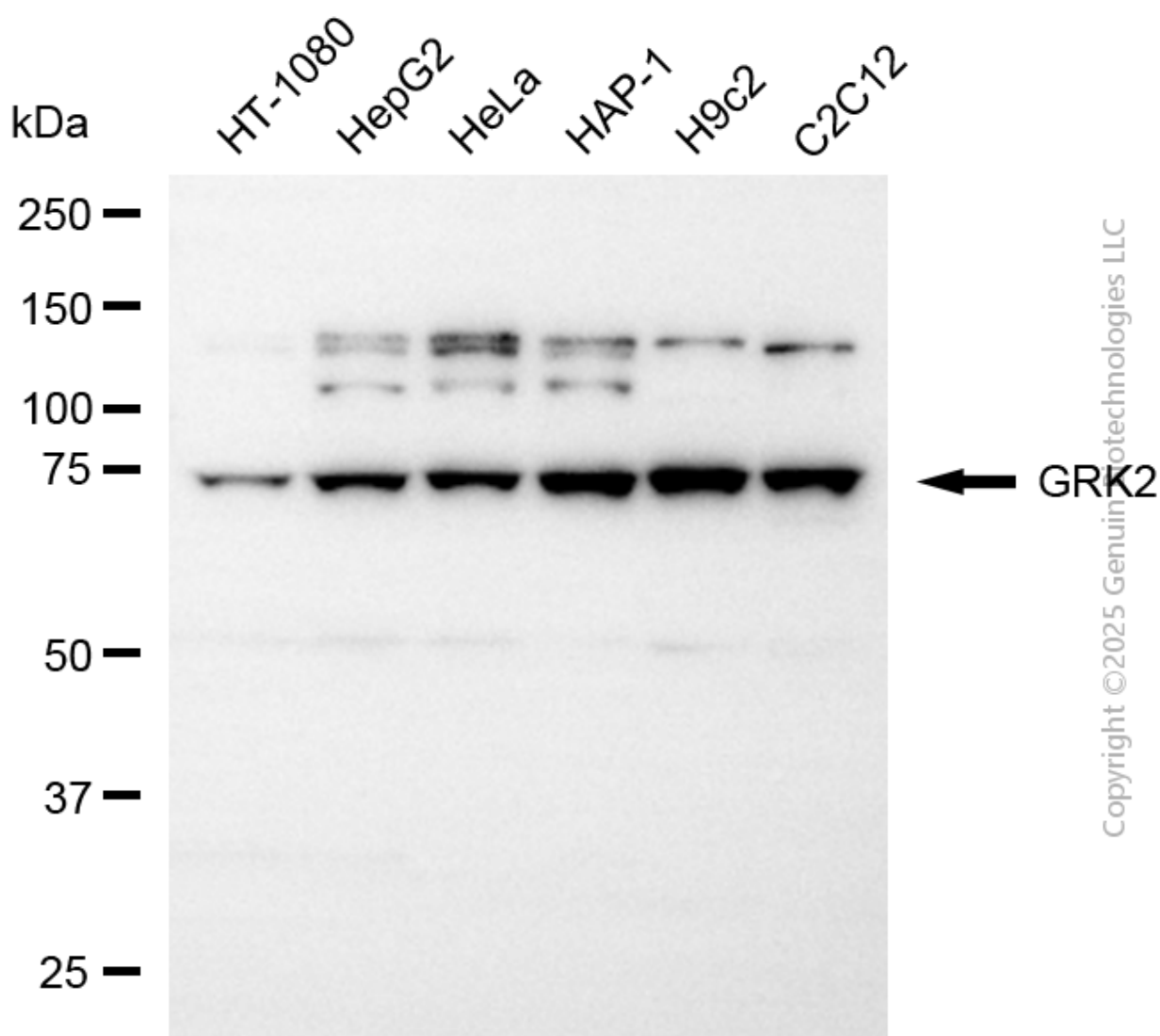
SUPPORT

SUPPORT@GENUINBIOTECH.COM
TEL: +1-540-855-7041

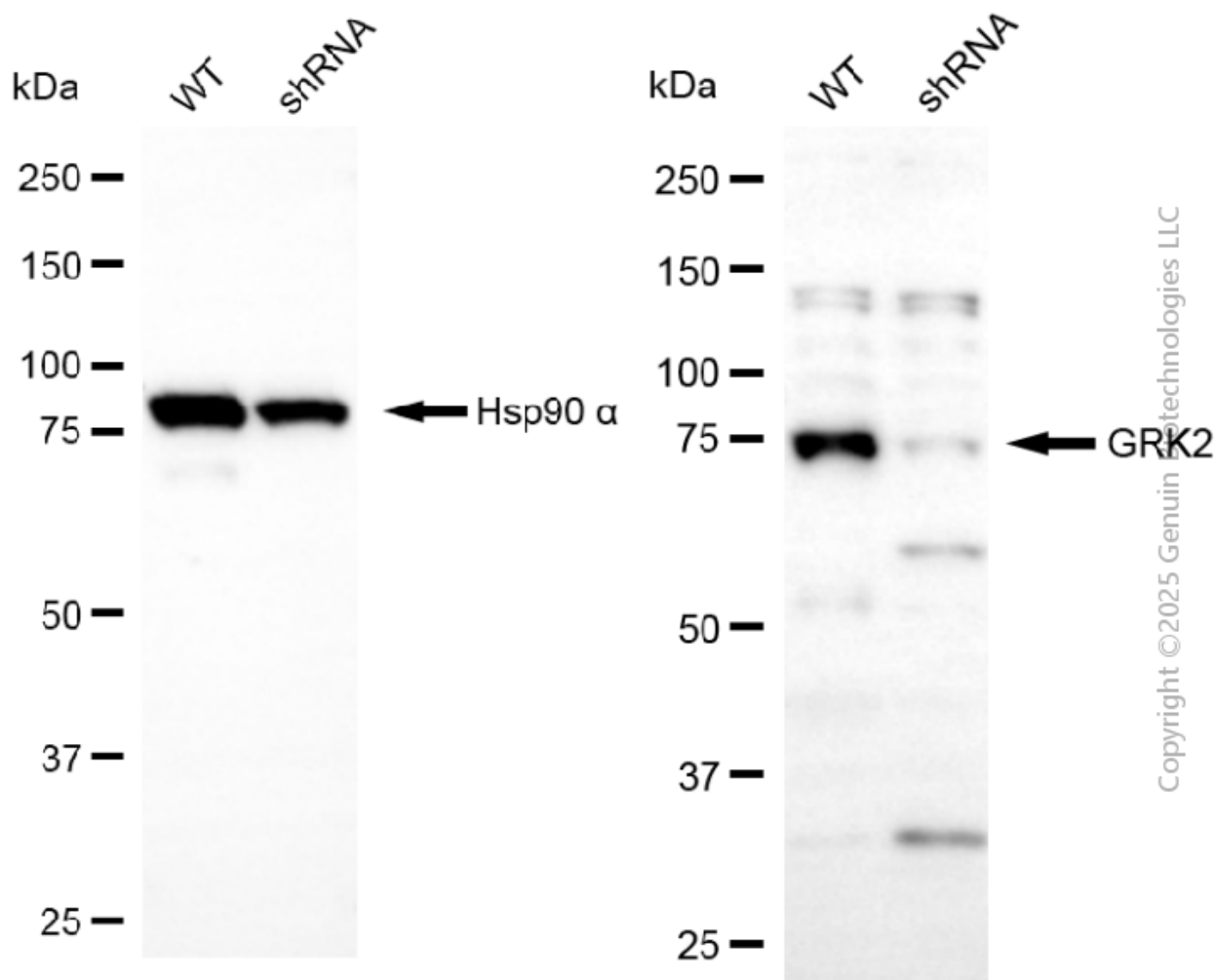
ORDERS

SALES@GENUINBIOTECH.COM
FAX: +1-540-855-7041

WWW.GENUINBIOTECH.COM



Western blotting analysis using anti-GRK2 antibody (Cat#64935). Total cell lysates (30 μ g) from various cell lines were loaded and separated by SDS-PAGE. The blot was incubated with anti-GRK2 antibody (Cat#64935, 1:5,000) and HRP-conjugated goat anti-rabbit secondary antibody (Cat#201, 1:20,000) respectively. Image was developed using FeQ™ ECL Substrate Kit (Cat#226).



Western blotting analysis using anti-GRK2 antibody (Cat#64935). GRK2 expression in wild-type (WT) and GRK2 shRNA knockdown (KD) HeLa cells with 20 µg of total cell lysates. Hsp90 α serves as a loading control. The blot was incubated with anti-GRK2 antibody (Cat#64935, 1:5,000) and HRP-conjugated goat anti-rabbit secondary antibody (Cat#201, 1:20,000) respectively. Image was developed using NaQ™ ECL Substrate Kit (Cat#716).