

KD-Validated Anti-Arginase 2 Rabbit Polyclonal Antibody



Catalog #: 64936

Aliases

ARG2; Arginase 2; Arginase-2, Mitochondrial; Kidney-Type Arginase; Non-Hepatic Arginase; Arginase, Type II; Type II Arginase; Arginase II; EC 3.5.3.1; L-Arginine Amidinohydrolase; L-Arginine Ureahydrolase; Nonhepatic Arginase; Kidney Arginase; EC 3.5.3

Background

Gene Name: ARG2

NCBI Gene Entry: [384](#)

UniProt Entry: [P78540](#)

Application Information

Molecular Weight: Predicted, 39 kDa; observed, 39 kDa

Clonality: Rabbit polyclonal antibody

Species Reactivity: Human, mouse, rat

Applications Tested: Western blotting (WB)

Immunogen

A synthesized peptide derived from human Arginase 2

Isotype

Rabbit IgG

Storage Buffer

Supplied in PBS (pH 7.4) containing 50% glycerol, and 0.02% sodium azide.

Storage

Store at -20 °C for one year.

Recommended Dilutions

Western Blotting (WB): 1:500-1:2,500

Note: This product is for research use only.

Validation Data

SUPPORT

SUPPORT@GENUINBIOTECH.COM
TEL: +1-540-855-7041

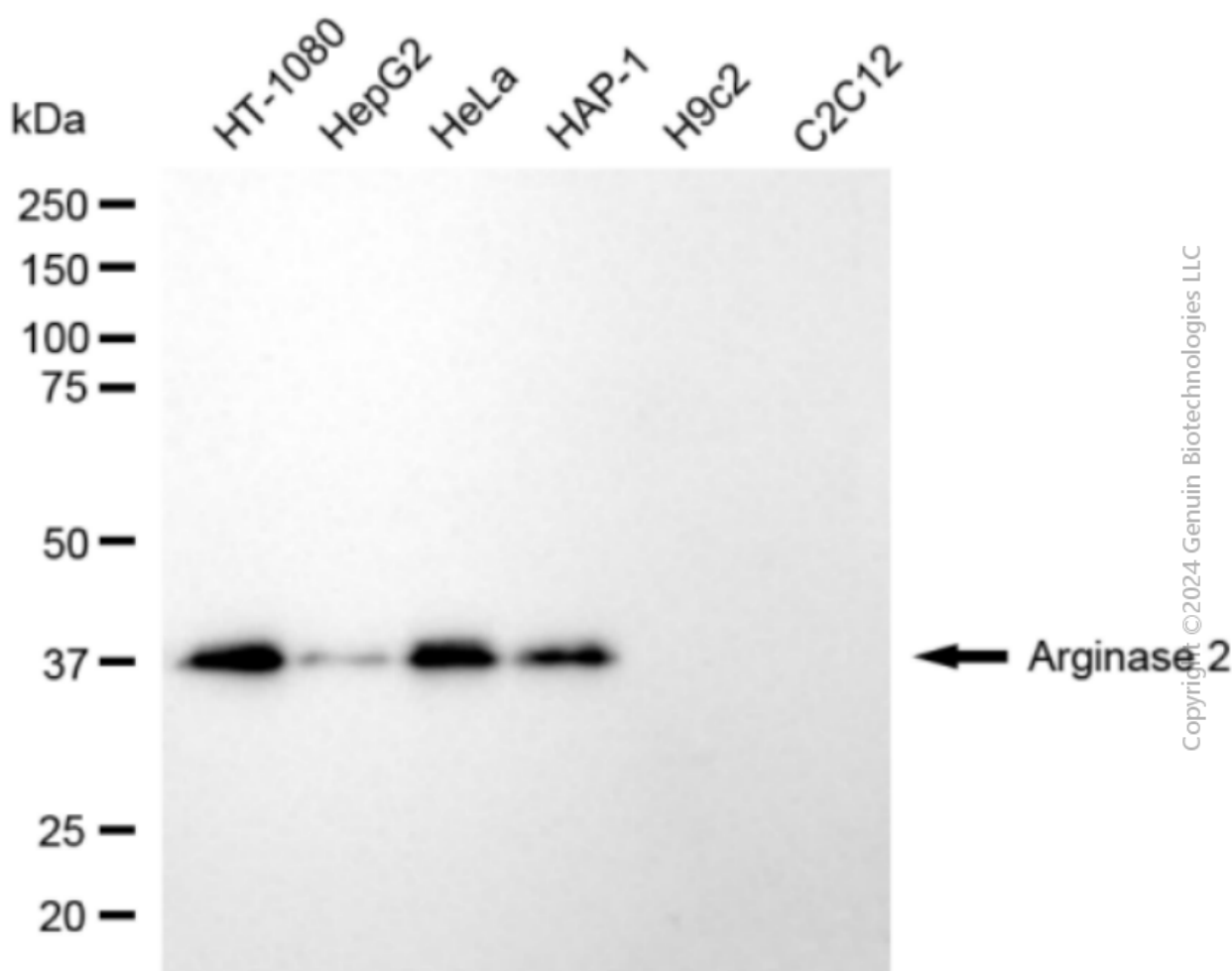
ORDERS

SALES@GENUINBIOTECH.COM
FAX: +1-540-855-7041

WWW.GENUINBIOTECH.COM

KD-Validated Anti-Arginase 2 Rabbit Polyclonal Antibody

PAGE 2



Western blotting analysis using anti-arginase 2 antibody (Cat#64936). Total cell lysates (30 µg) from various cell lines were loaded and separated by SDS-PAGE. The blot was incubated with anti-arginase 2 antibody (Cat#64936, 1:2,500) and HRP-conjugated goat anti-rabbit secondary antibody (Cat#201, 1:20,000) respectively. Image was developed using NaQ™ ECL Substrate Kit (Cat#716).

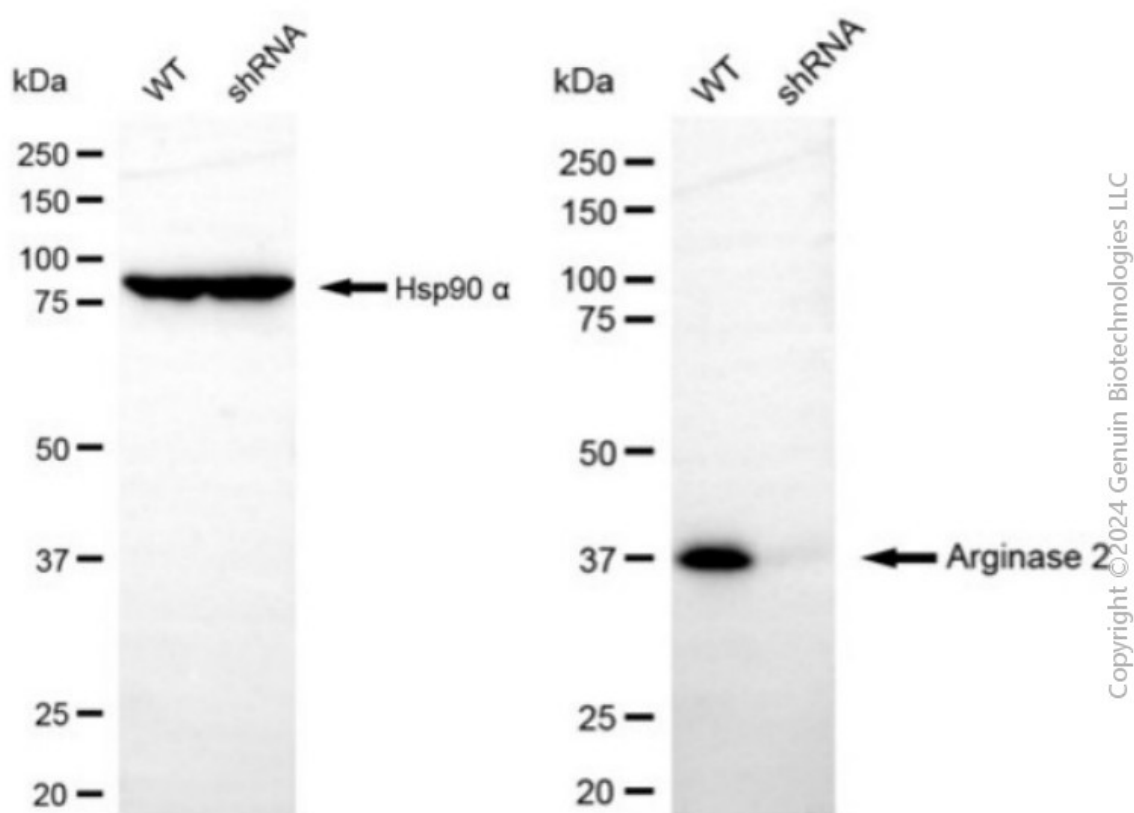
SUPPORT

SUPPORT@GENUINBIOTECH.COM
TEL: +1-540-855-7041

ORDERS

SALES@GENUINBIOTECH.COM
FAX: +1-540-855-7041

WWW.GENUINBIOTECH.COM



Western blotting analysis using anti-arginase 2 antibody (Cat #64936). Arginase 2 expression in wild-type (WT) and arginase 2 (ARG2) shRNA knockdown (KD) HT-1080 cells with 20 µg of total cell lysates. Hsp90 α serves as a loading control. The blot was incubated with anti-arginase 2 antibody (Cat #64936, 1:2,500) and HRP-conjugated goat anti-rabbit secondary antibody (Cat #201, 1:20,000) respectively. Image was developed using NaQ™ ECL Substrate Kit (Cat #716).