

KD-Validated Anti-C1QBP Rabbit Polyclonal Antibody



Catalog #: 64938

Aliases

C1QBP; Complement C1q Binding Protein; Hyaluronan-Binding Protein 1; GC1Q-R; SF2p32; GC1qR; HABP1; P32; Complement Component 1 Q Subcomponent-Binding Protein, Mitochondrial; Complement Component 1, Q Subcomponent Binding Protein; Splicing Factor SF2-Associated Protein; C1q Globular Domain-Binding Protein; Mitochondrial Matrix Protein P32; ASF/SF2-Associated Protein P32; Glycoprotein GC1qBP; SF2AP32; GC1QBP; P33; GC1q-R Protein; COXPD33; SF2P32; C1qBP

Background

Gene Name: C1QBP

NCBI Gene Entry: [708](#)

UniProt Entry: [Q07021](#)

Application Information

Molecular Weight: Predicted, 31 kDa; observed, 35 kDa

Clonality: Rabbit polyclonal antibody

Species Reactivity: Human

Applications Tested: Western blotting (WB)

Immunogen

A synthesized peptide derived from human BCL2

Isotype

Rabbit IgG

Storage Buffer

Supplied in PBS (pH 7.4) containing 50% glycerol, and 0.02% sodium azide.

Storage

Store at -20 °C for one year.

Recommended Dilutions

Western Blotting (WB): 1:500-1:2,500

Note: This product is for research use only.

SUPPORT

SUPPORT@GENUINBIOTECH.COM
TEL: +1-540-855-7041

ORDERS

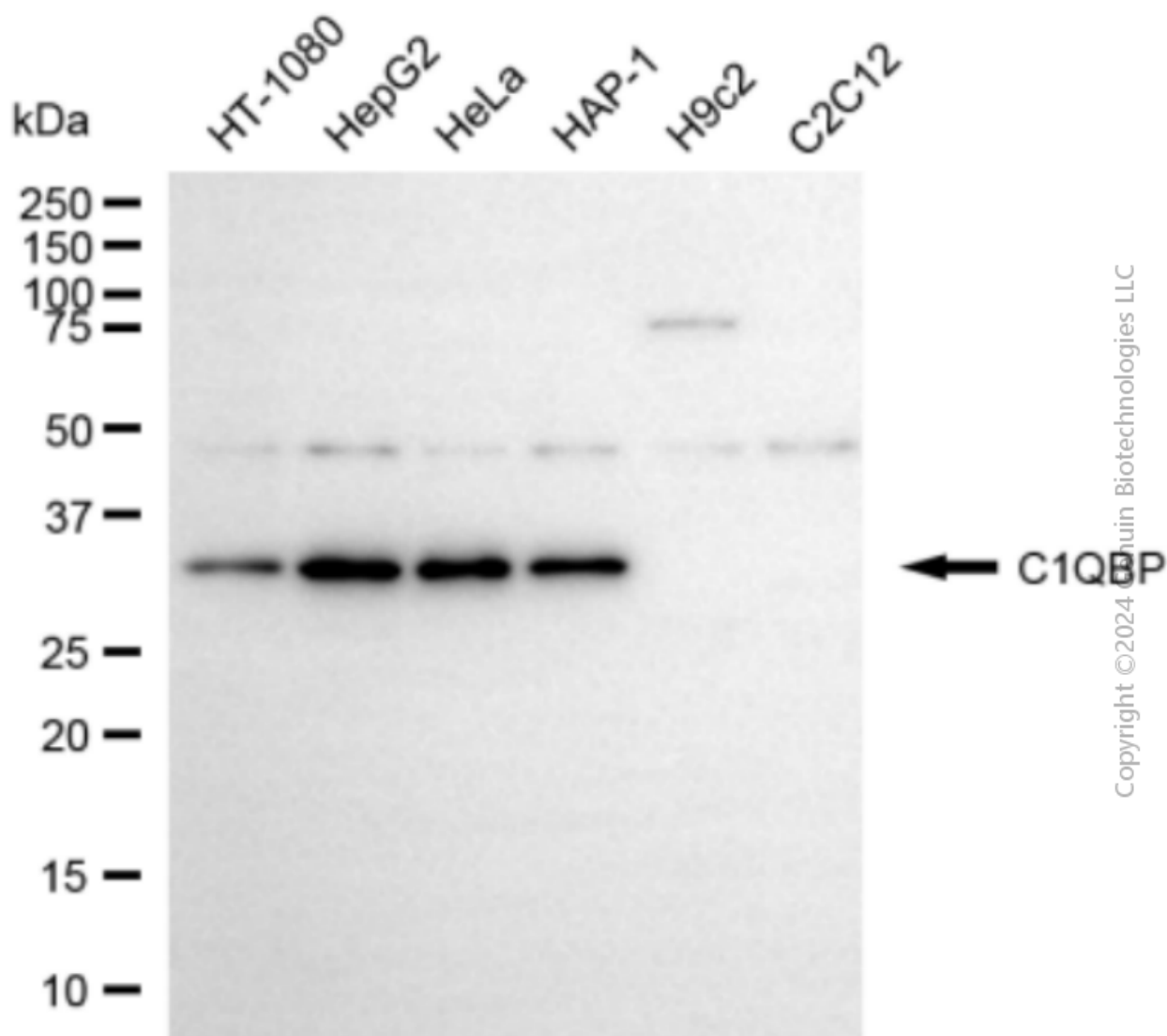
SALES@GENUINBIOTECH.COM
FAX: +1-540-855-7041

WWW.GENUINBIOTECH.COM

KD-Validated Anti-C1QBP Rabbit Polyclonal Antibody

PAGE 2

Validation Data



Western blotting analysis using anti-C1QBP antibody (Cat#64938). Total cell lysates (20 µg) from various cell lines were loaded and separated by SDS-PAGE. The blot was incubated with anti-C1QBP antibody (Cat#64938, 1:2,500) and HRP-conjugated goat anti-rabbit secondary antibody (Cat#201, 1:20,000) respectively. Image was developed using NaQ™ ECL Substrate Kit (Cat#716).

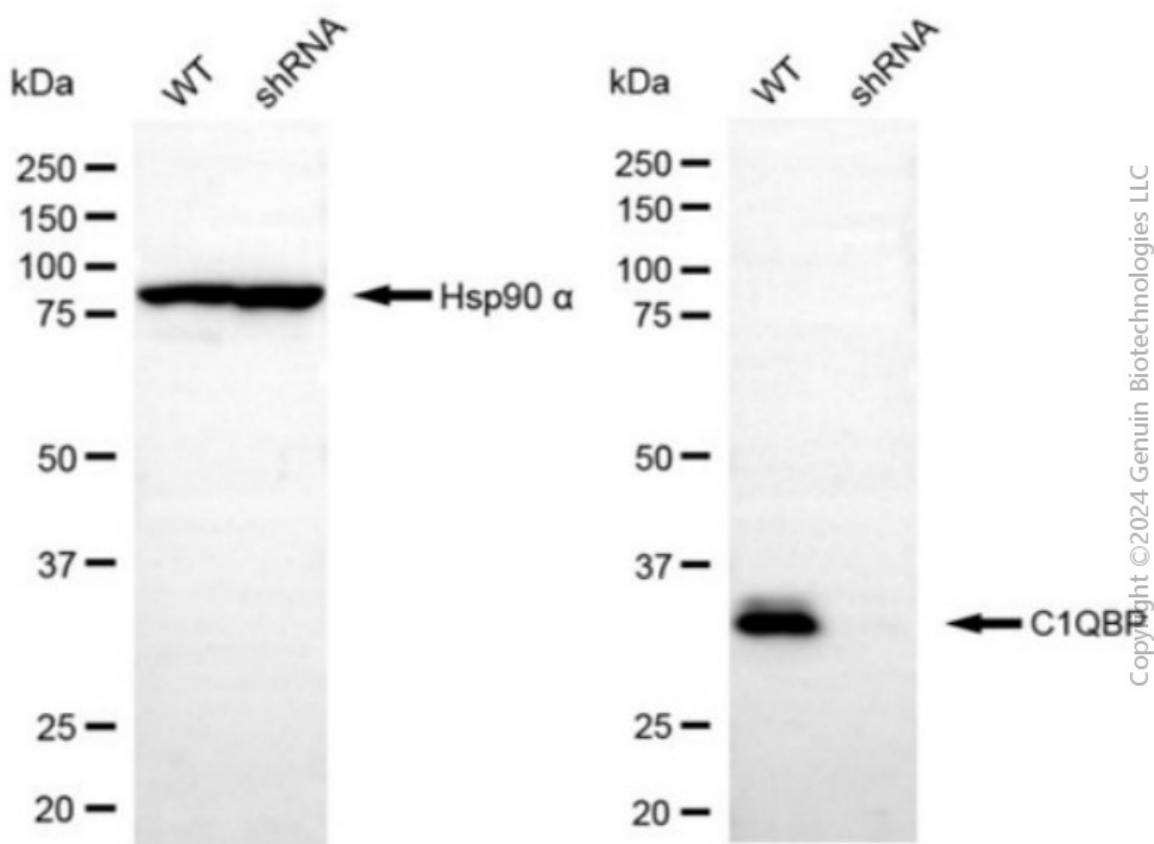
SUPPORT

SUPPORT@GENUINBIOTECH.COM
TEL: +1-540-855-7041

ORDERS

SALES@GENUINBIOTECH.COM
FAX: +1-540-855-7041

WWW.GENUINBIOTECH.COM



Western blotting analysis using anti-C1QBP antibody (Cat #64938). C1QBP expression in wild-type (WT) and C1QBP shRNA knockdown (KD) HeLa cells with 20 µg of total cell lysates. Hsp90 α serves as a loading control. The blot was incubated with anti-C1QBP antibody (Cat #64938, 1:2,500) and HRP-conjugated goat anti-rabbit secondary antibody (Cat #201, 1:20,000) respectively. Image was developed using NaQ™ ECL Substrate Kit (Cat #716).