

KD-Validated Anti-Cyclin B1 Rabbit Polyclonal Antibody



Catalog #: 64943

Aliases

CCNB1; Cyclin B1; CCNB; G2/Mitotic-Specific Cyclin-B1; G2/Mitotic-Specific Cyclin B1

Background

Gene Name: CCNB1

NCBI Gene Entry: [891](#)

UniProt Entry: [P14635](#)

Application Information

Molecular Weight: Predicted, 48 kDa; observed, 58 kDa

Clonality: Rabbit polyclonal antibody

Species Reactivity: Human

Applications Tested: Western blotting (WB)

Immunogen

A synthesized peptide derived from human Cyclin B1

Isotype

Rabbit IgG

Storage Buffer

Supplied in PBS (pH 7.4) containing 50% glycerol, and 0.02% sodium azide.

Storage

Store at -20 °C for one year.

Recommended Dilutions

Western Blotting (WB): 1:500-1:2,500

Note: This product is for research use only.

Validation Data

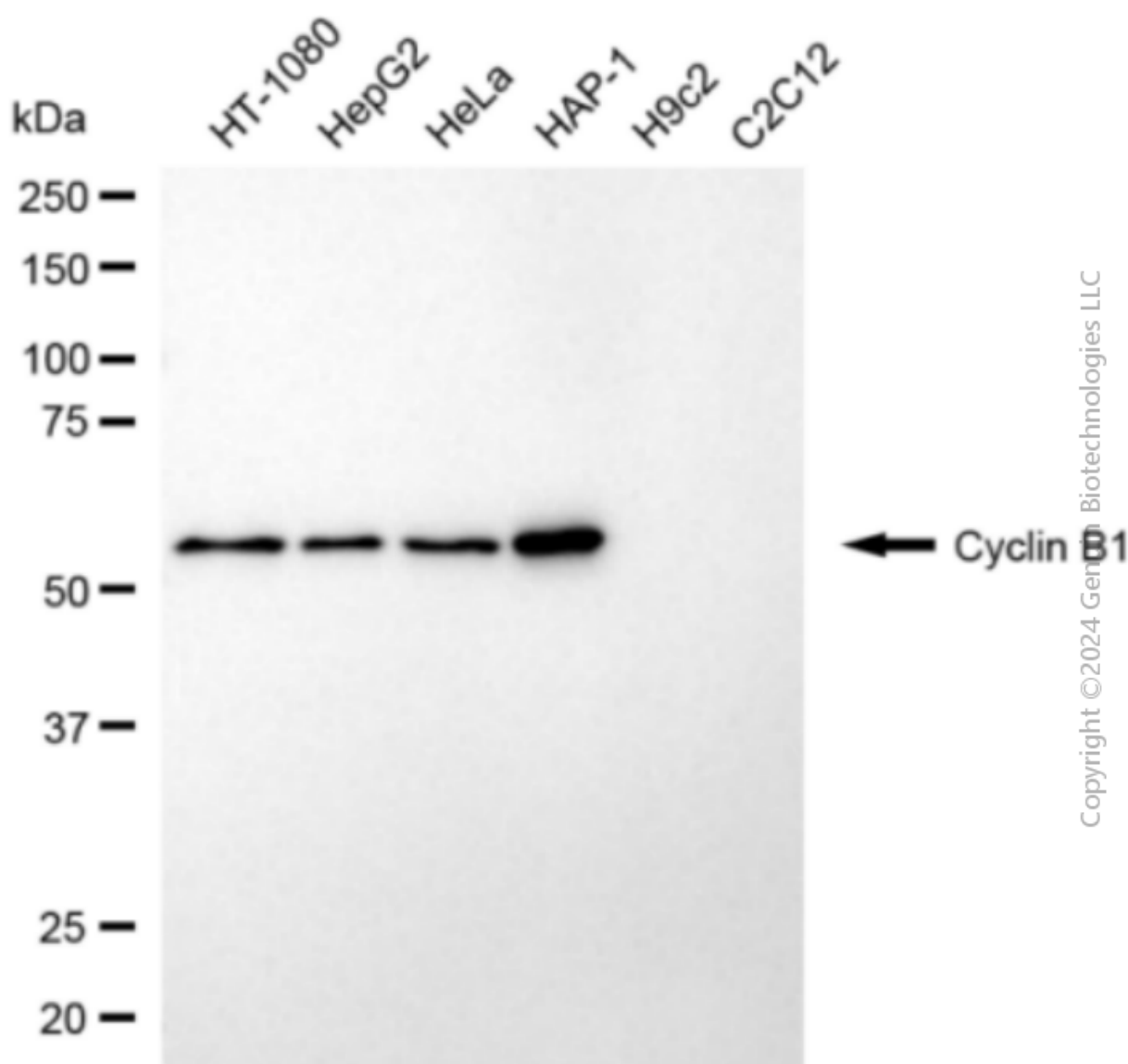
SUPPORT

SUPPORT@GENUINBIOTECH.COM
TEL: +1-540-855-7041

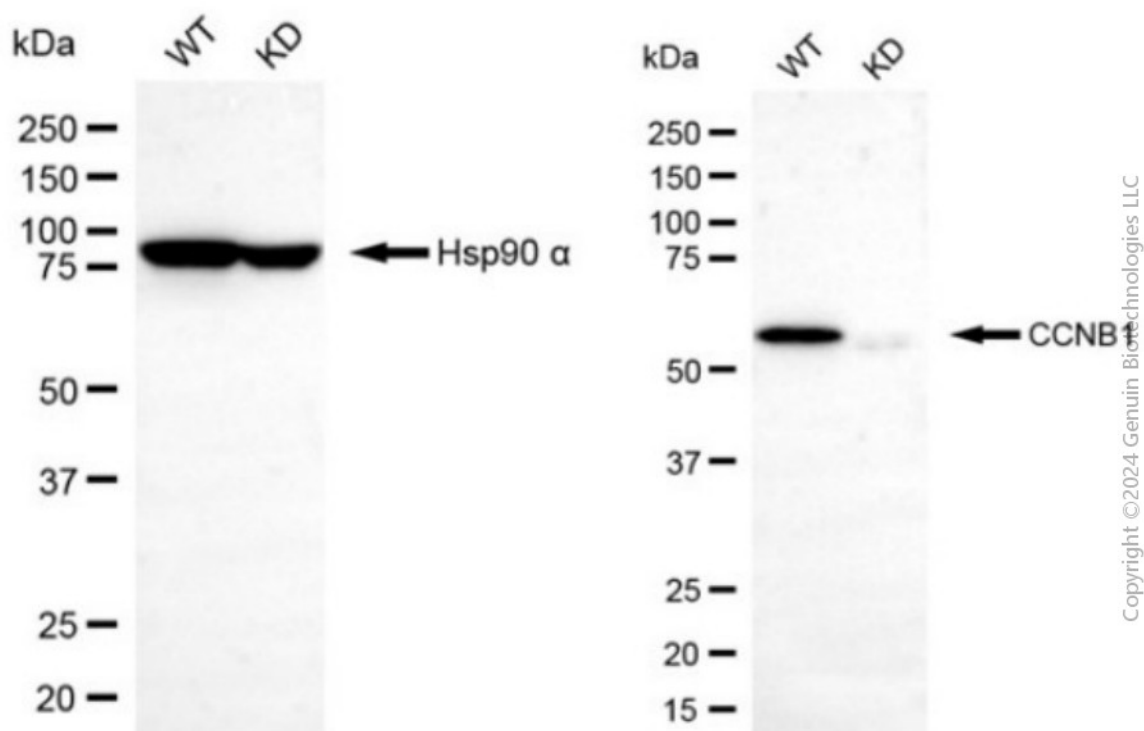
ORDERS

SALES@GENUINBIOTECH.COM
FAX: +1-540-855-7041

WWW.GENUINBIOTECH.COM



Western blotting analysis using anti-cyclin B1 antibody (Cat#64943). Total cell lysates (30 μ g) from various cell lines were loaded and separated by SDS-PAGE. The blot was incubated with anti-cyclin B1 antibody (Cat#64943, 1:2,500) and HRP-conjugated goat anti-rabbit secondary antibody (Cat#201, 1:20,000) respectively. Image was developed using FeQ™ ECL Substrate Kit (Cat#226).



Western blotting analysis using anti-cyclin B1 antibody (Cat #64943). Cyclin B1 expression in wild-type (WT) and cyclin B1 (CCNB1) knockdown (KD) HeLa cells with 20 µg of total cell lysates. Hsp90 α serves as a loading control. The blot was incubated with anti-cyclin B1 antibody (Cat #64943, 1:2,500) and HRP-conjugated goat anti-rabbit secondary antibody (Cat #201, 1:20,000) respectively. Image was developed using FeQ™ ECL Substrate Kit (Cat #226).