

# KD-Validated Anti-CSNK2B Rabbit Polyclonal Antibody



**Catalog #: 64945**

## Aliases

CSNK2B; Casein Kinase 2 Beta; Ckb1; Ckb2; Casein Kinase 2, Beta Polypeptide; Casein Kinase II Subunit Beta; Protein G5a; CK II Beta; Phosvitin; CK2N; G5A; Alternative Name: G5a, Phosvitin; Casein Kinase II Beta Subunit; CSNK2B-LY6G5B-1072; CSNK2B-LY6G5B-1103; CSNK2B-LY6G5B-532; CSNK2B-LY6G5B-560; CSNK2B-LY6G5B-562; POBINDS; CSK2B; CK2B

## Background

Gene Name: CSNK2B

NCBI Gene Entry: [1460](#)

UniProt Entry: [P67870](#)

## Application Information

Molecular Weight: Predicted, 25 kDa; observed, 25 kDa

Clonality: Rabbit polyclonal antibody

Species Reactivity: Human, mouse, rat

Applications Tested: Western blotting (WB)

## Immunogen

A synthesized peptide derived from human CK2 beta

## Isotype

Rabbit IgG

## Storage Buffer

Supplied in PBS (pH 7.4) containing 50% glycerol, and 0.02% sodium azide.

## Storage

Store at -20 °C for one year.

## Recommended Dilutions

Western Blotting (WB): 1:500-1:2,500

**Note:** This product is for research use only.

## Validation Data

---

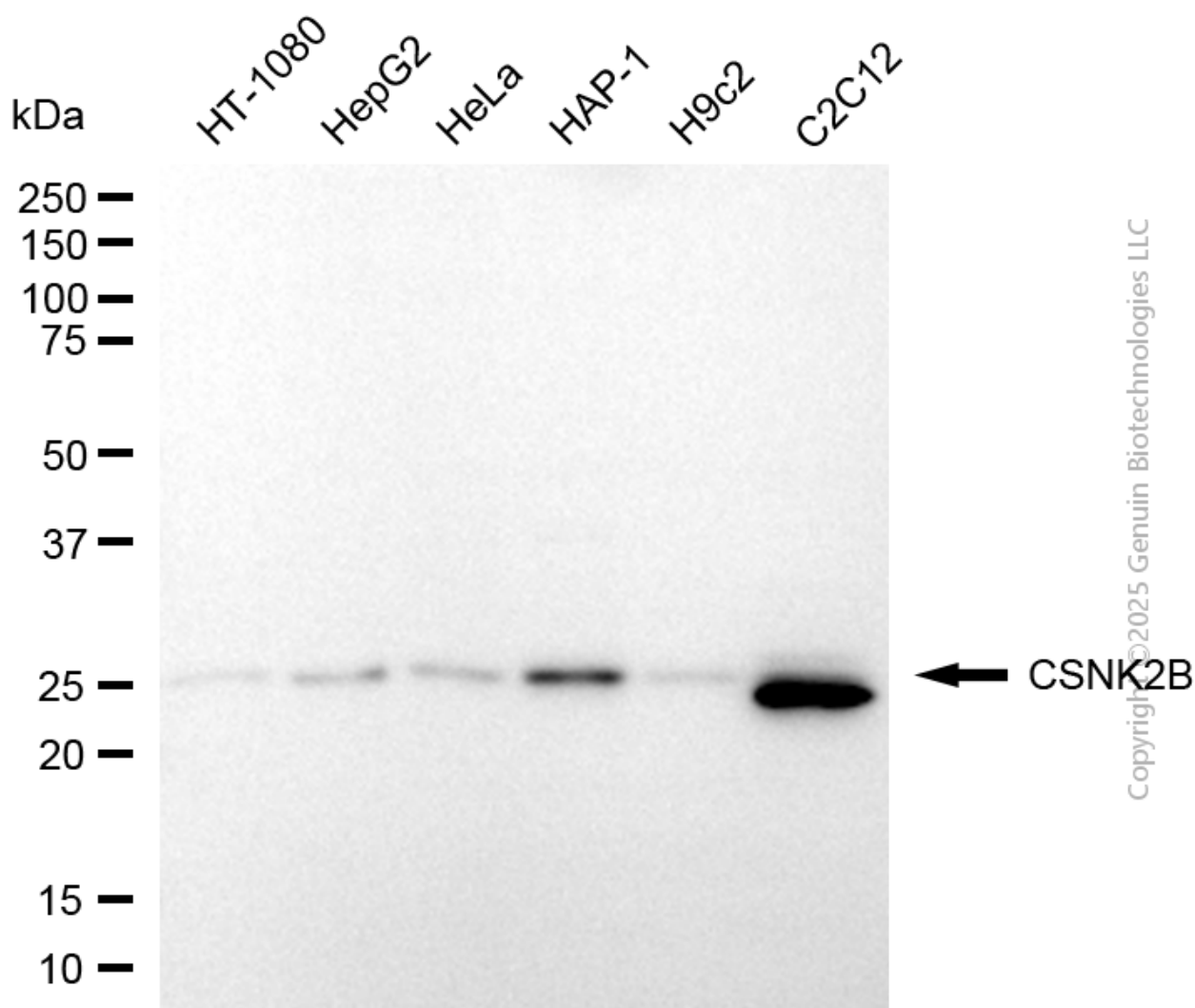
### SUPPORT

SUPPORT@GENUINBIOTECH.COM  
TEL: +1-540-855-7041

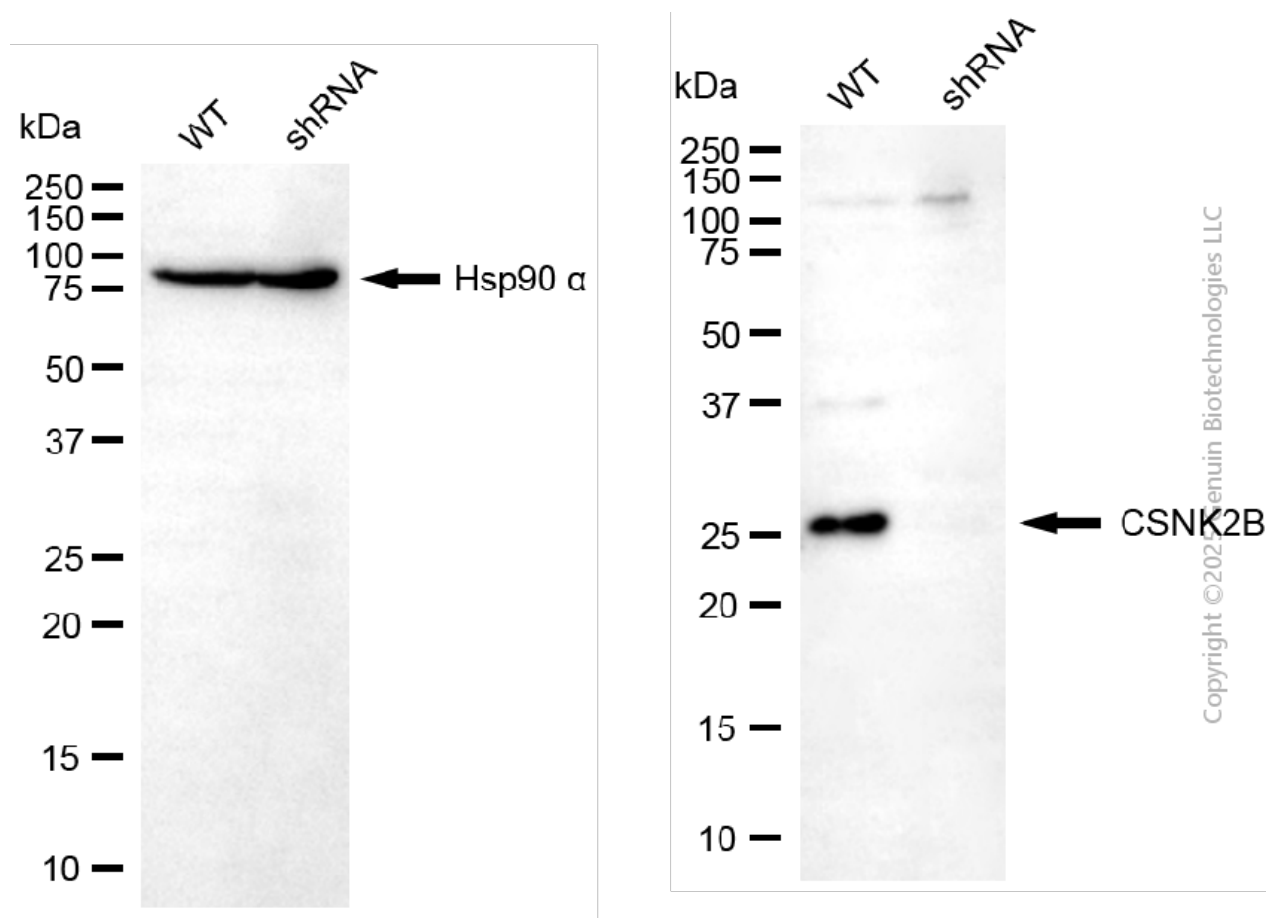
### ORDERS

SALES@GENUINBIOTECH.COM  
FAX: +1-540-855-7041

[WWW.GENUINBIOTECH.COM](http://WWW.GENUINBIOTECH.COM)



Western blotting analysis using anti-CSNK2B antibody (Cat#64945). Total cell lysates (30  $\mu$ g) from various cell lines were loaded and separated by SDS-PAGE. The blot was incubated with anti-CSNK2B antibody (Cat#64945, 1:2,500) and HRP-conjugated goat anti-rabbit secondary antibody (Cat#201, 1:20,000) respectively. Image was developed using NaQ™ ECL Substrate Kit (Cat#716).



Western blotting analysis using anti-CSNK2B antibody (Cat#64945). CSNK2B expression in wild-type (WT) and CSNK2B shRNA knockdown (KD) HeLa cells with 30 µg of total cell lysates. Hsp90 α serves as a loading control. The blot was incubated with anti-CSNK2B antibody (Cat#64945, 1:1,000) and HRP-conjugated goat anti-rabbit secondary antibody (Cat#201, 1:20,000) respectively. Image was developed using FeQ™ ECL Substrate Kit (Cat#226).