

# KD-Validated Anti-Cathepsin D LC Rabbit Polyclonal Antibody



**Catalog #: 64946**

## Aliases

CTSD; Cathepsin D; CLN10; CPSD; Ceroid-Lipofuscinosis, Neuronal 10; EC 3.4.23.5; Epididymis Secretory Sperm Binding Protein Li 130P; Cathepsin D (Lysosomal Aspartyl Protease); Lysosomal Aspartyl Peptidase; Lysosomal Aspartyl Protease; HEL-S-130P; EC 3.4.23

## Background

Gene Name: CTSD

NCBI Gene Entry: [1509](#)

UniProt Entry: [P07339](#)

## Application Information

Molecular Weight: Predicted, 45 kDa; observed, 14 kDa

Clonality: Rabbit polyclonal antibody

Species Reactivity: Human

Applications Tested: Western blotting (WB)

## Immunogen

A synthesized peptide derived from human Cathepsin D LC

## Isotype

Rabbit IgG

## Storage Buffer

Supplied in PBS (pH 7.4) containing 50% glycerol, and 0.02% sodium azide.

## Storage

Store at -20 °C for one year.

## Recommended Dilutions

Western Blotting (WB): 1:500-1:2,500

**Note:** This product is for research use only.

## Validation Data

---

### SUPPORT

SUPPORT@GENUINBIOTECH.COM  
TEL: +1-540-855-7041

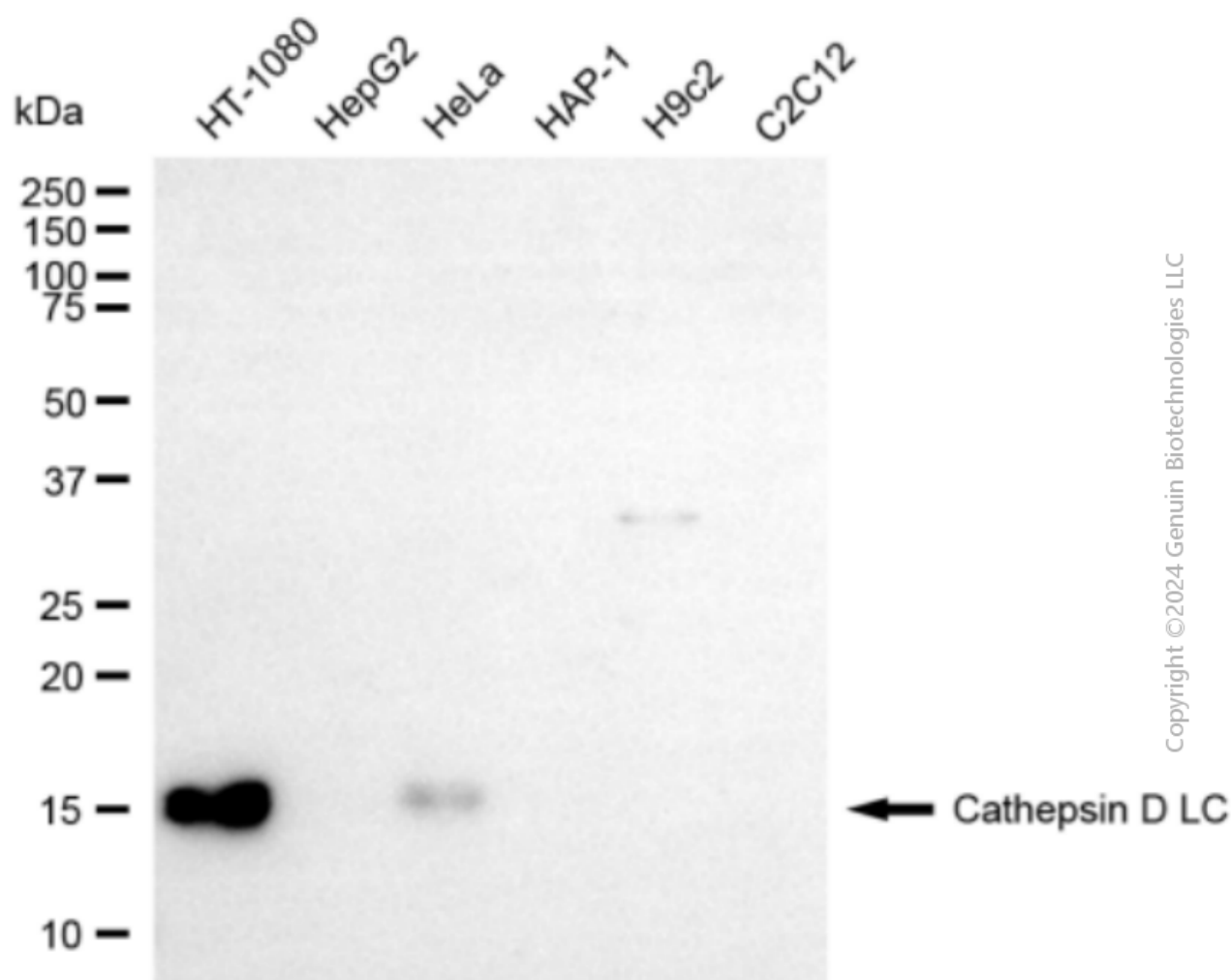
### ORDERS

SALES@GENUINBIOTECH.COM  
FAX: +1-540-855-7041

[WWW.GENUINBIOTECH.COM](http://WWW.GENUINBIOTECH.COM)

## KD-Validated Anti-Cathepsin D LC Rabbit Polyclonal Antibody

PAGE 2



Western blotting analysis using anti-cathepsin D LC antibody (Cat#64946). Total cell lysates (30  $\mu$ g) from various cell lines were loaded and separated by SDS-PAGE. The blot was incubated with anti-cathepsin D LC antibody (Cat#64946, 1:2,500) and HRP-conjugated goat anti-rabbit secondary antibody (Cat#201, 1:20,000) respectively. Image was developed using FeQ™ ECL Substrate Kit (Cat#226).

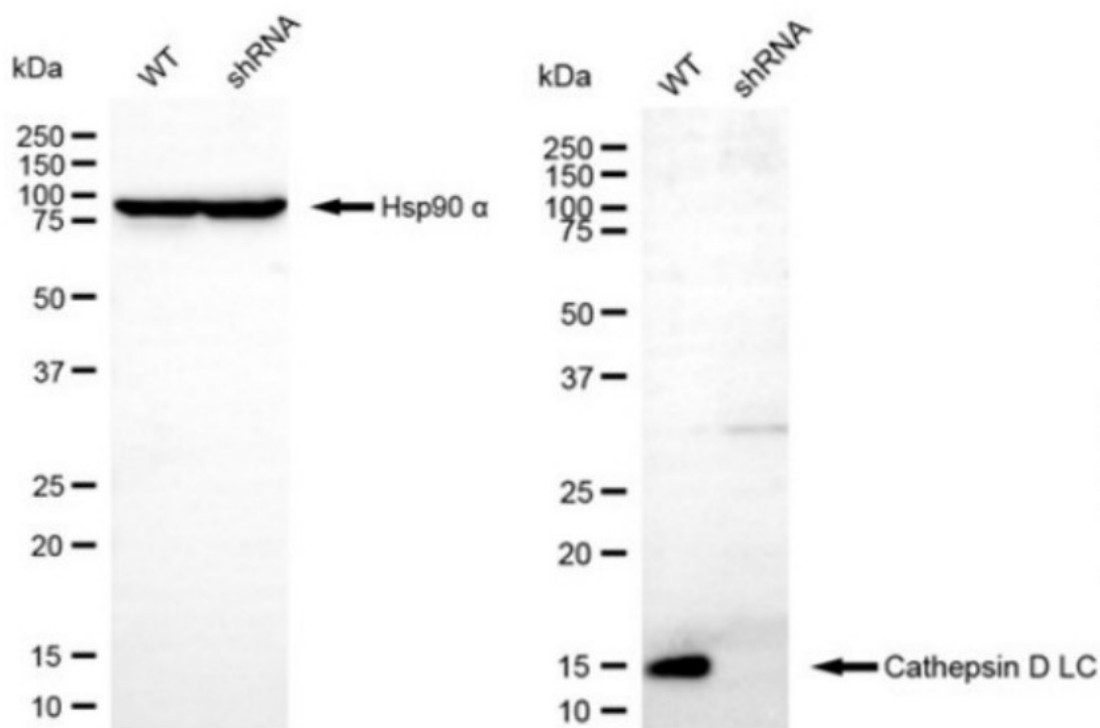
### SUPPORT

SUPPORT@GENUINBIOTECH.COM  
TEL: +1-540-855-7041

### ORDERS

SALES@GENUINBIOTECH.COM  
FAX: +1-540-855-7041

WWW.GENUINBIOTECH.COM



Western blotting analysis using anti-cathepsin D LC antibody (Cat #64946). Cathepsin D LC expression in wild-type (WT) and cathepsin D LC (CTSD) shRNA knockdown (KD) HeLa cells with 30 µg of total cell lysates. Hsp90 α serves as a loading control. The blot was incubated with anti-cathepsin D LC antibody (Cat #64946, 1:2,500) and HRP-conjugated goat anti-rabbit secondary antibody (Cat #201, 1:20,000) respectively. Image was developed using FeQ™ ECL Substrate Kit (Cat #226).