

KD-Validated Anti-GYS1 Rabbit Polyclonal Antibody



Catalog #: 64954

Aliases

GYS1; Glycogen Synthase 1; GSY; GYS; Glycogen [Starch] Synthase, Muscle; Glycogen Synthase 1 (Muscle); EC 2.4.1.11

Background

Gene Name: GYS1

NCBI Gene Entry: [2997](#)

UniProt Entry: [P13807](#)

Application Information

Molecular Weight: Predicted, 84 kDa; observed, 85 kDa

Clonality: Rabbit polyclonal antibody

Species Reactivity: Human, mouse, rat

Applications Tested: Western blotting (WB)

Immunogen

A synthesized peptide derived from human GYS1

Isotype

Rabbit IgG

Storage Buffer

Supplied in PBS (pH 7.4) containing 50% glycerol, and 0.02% sodium azide.

Storage

Store at -20 °C for one year.

Recommended Dilutions

Western Blotting (WB): 1:500-1:2,500

Note: This product is for research use only.

Validation Data

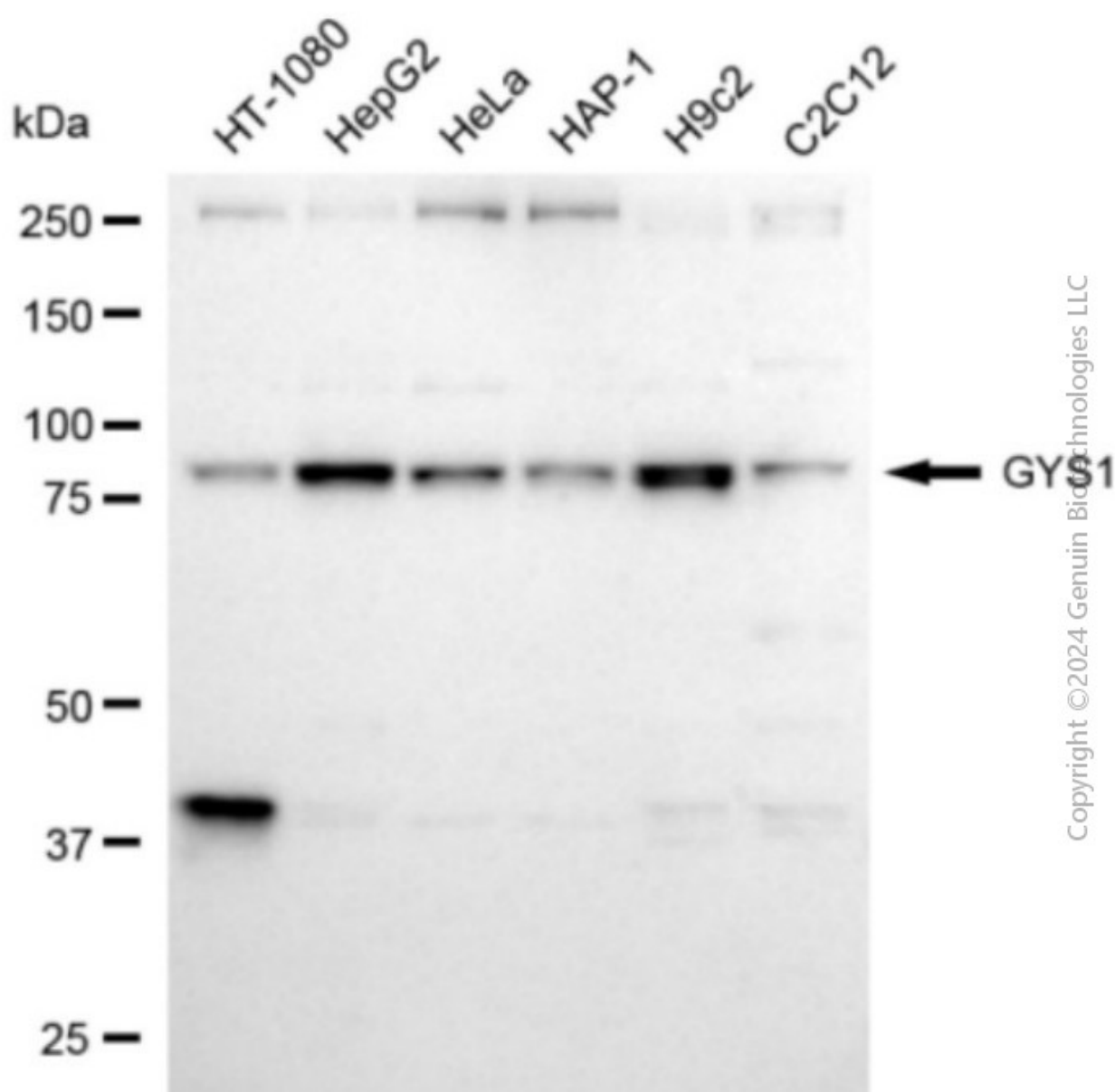
SUPPORT

SUPPORT@GENUINBIOTECH.COM
TEL: +1-540-855-7041

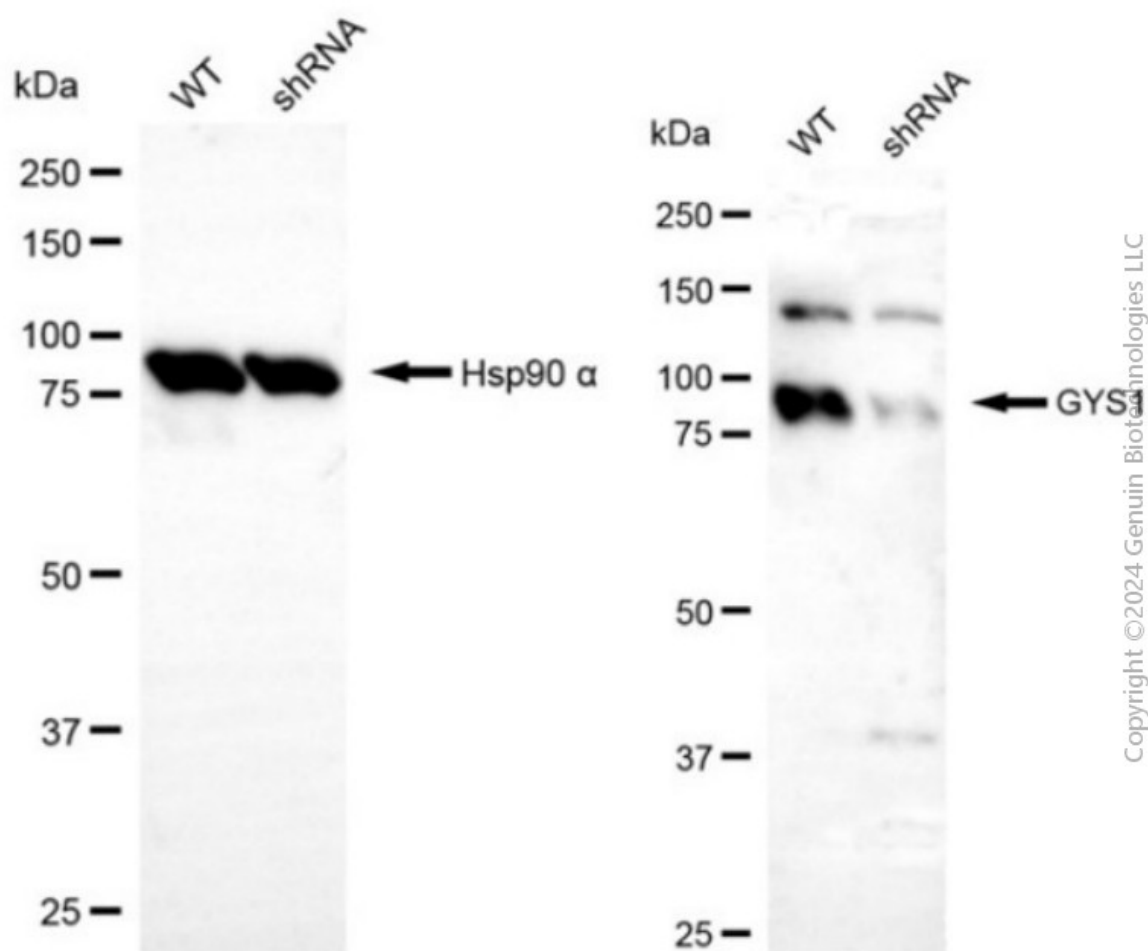
ORDERS

SALES@GENUINBIOTECH.COM
FAX: +1-540-855-7041

WWW.GENUINBIOTECH.COM



Western blotting analysis using anti-GYS1 antibody (Cat#64954). Total cell lysates (30 μ g) from various cell lines were loaded and separated by SDS-PAGE. The blot was incubated with anti-GYS1 antibody (Cat#64954, 1:2,500) and HRP-conjugated goat anti-rabbit secondary antibody (Cat#201, 1:20,000) respectively. Image was developed using FeQ™ ECL Substrate Kit (Cat#226).



Western blotting analysis using anti-GYS1 antibody (Cat#64954). GYS1 expression in wild-type (WT) and GYS1 shRNA knockdown (KD) HeLa cells with 30 µg of total cell lysates. β-Tubulin serves as a loading control. The blot was incubated with anti-GYS1 antibody (Cat#64954, 1:2,500) and HRP-conjugated goat anti-rabbit secondary antibody (Cat#201, 1:20,000) respectively. Image was developed using FeQ™ ECL Substrate Kit (Cat#226).