

KD-Validated Anti-Keratin 7 Rabbit Polyclonal Antibody



Catalog #: 64959

Aliases

KRT7; Keratin 7; CK-7; SCL; K7; Keratin, Type II Cytoskeletal 7; Sarcolectin; K2C7; CK7; Keratin, 55K Type II Cytoskeletal; Type-II Keratin Kb7; Keratin 7, Type II; Cytokeratin 7; Keratin, Simple Epithelial Type I, K7; Type II Mesothelial Keratin K7; Cytokeratin-7; Keratin-7

Background

Gene Name: KRT7

NCBI Gene Entry: [3855](#)

UniProt Entry: [P08729](#)

Application Information

Molecular Weight: Predicted, 51 kDa; observed, 40-55 kDa

Clonality: Rabbit polyclonal antibody

Species Reactivity: Human, rat

Applications Tested: Western blotting (WB)

Immunogen

A synthesized peptide derived from human Cytokeratin 7

Isotype

Rabbit IgG

Storage Buffer

Supplied in PBS (pH 7.4) containing 50% glycerol, and 0.02% sodium azide.

Storage

Store at -20 °C for one year.

Recommended Dilutions

Western Blotting (WB): 1:500-1:2,500

Note: This product is for research use only.

Validation Data

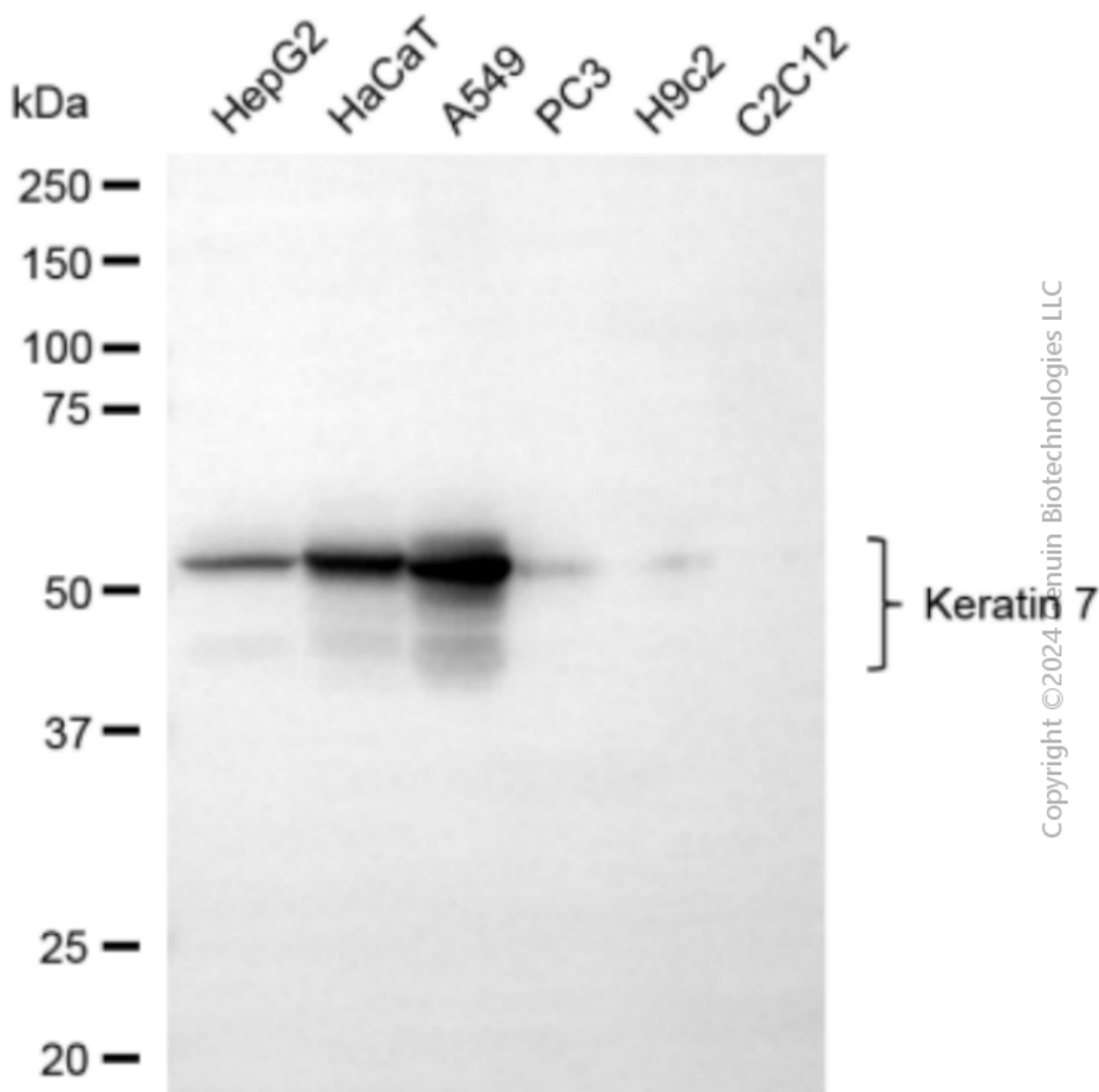
SUPPORT

SUPPORT@GENUINBIOTECH.COM
TEL: +1-540-855-7041

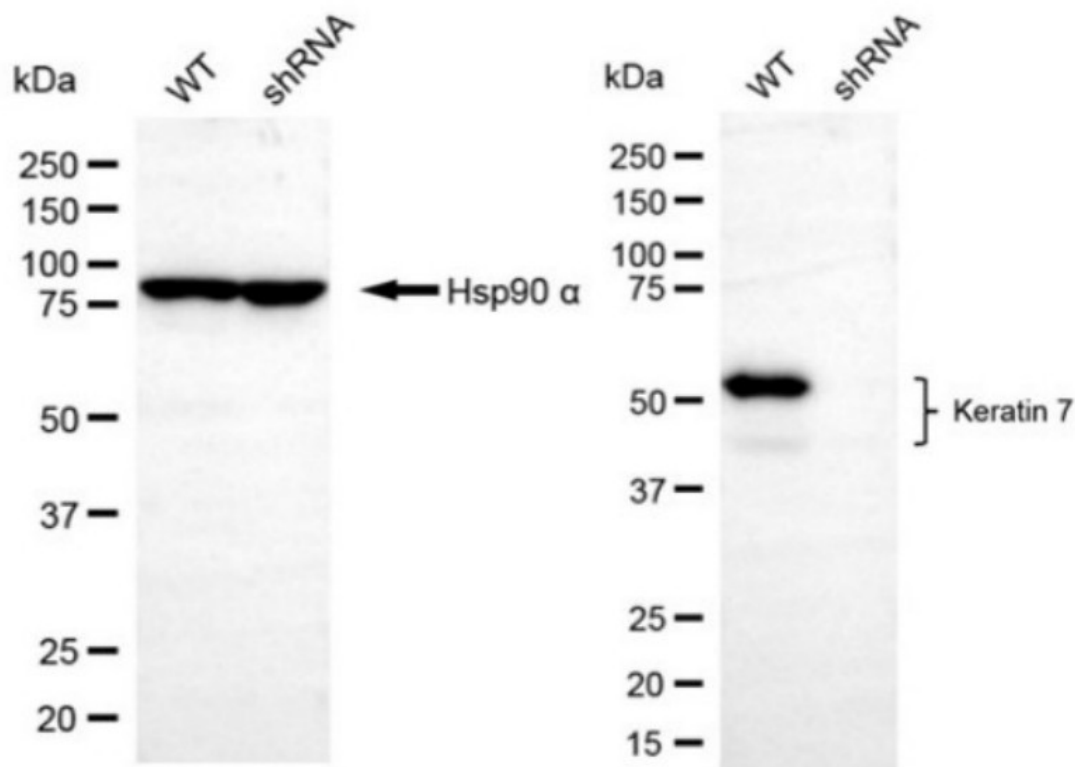
ORDERS

SALES@GENUINBIOTECH.COM
FAX: +1-540-855-7041

WWW.GENUINBIOTECH.COM



Western blotting analysis using anti-keratin 7 antibody (Cat#64959). Total cell lysates (30 µg) from various cell lines were loaded and separated by SDS-PAGE. The blot was incubated with anti-keratin 7 antibody (Cat#64959, 1:2,500) and HRP-conjugated goat anti-rabbit secondary antibody (Cat#201, 1:20,000) respectively. Image was developed using NaQ™ ECL Substrate Kit (Cat#716).



Copyright ©2024 Genuin Biotechnologies LLC

Western blotting analysis using anti-keratin 7 antibody (Cat #64959). Keratin 7 expression in wild-type (WT) and keratin 7 (KRT7) shRNA knockdown (KD) HeLa cells with 20 µg of total cell lysates. Hsp90 α serves as a loading control. The blot was incubated with anti-keratin 7 antibody (Cat #64959, 1:2,500) and HRP-conjugated goat anti-rabbit secondary antibody (Cat #201, 1:20,000) respectively. Image was developed using FeQ™ ECL Substrate Kit (Cat #226).