

# KD-Validated Anti-Galectin 1 Rabbit Polyclonal Antibody



**Catalog #: 64961**

## Aliases

LGALS1; Galectin 1; GBP; Lectin, Galactoside-Binding, Soluble, 1; Beta-Galactoside-Binding Lectin L-14-I; Putative MAPK-Activating Protein PM12; 14 KDa Laminin-Binding Protein; Lactose-Binding Lectin 1; S-Lac Lectin 1; 14 KDa Lectin; Galectin-1; Galaptin; HLBP14; Gal-1; HBL; HPL; Epididymis Secretory Sperm Binding Protein; Beta-Galactoside-Binding Protein 14kDa; Lectin Galactoside-Binding Soluble 1; GAL1

## Background

Gene Name: LGALS1

NCBI Gene Entry: [3956](#)

UniProt Entry: [P09382](#)

## Application Information

Molecular Weight: Predicted, 15 kDa; observed, 15 kDa

Clonality: Rabbit polyclonal antibody

Species Reactivity: Human, mouse, rat

Applications Tested: Western blotting (WB)

## Immunogen

A synthesized peptide derived from human Galectin 1

## Isotype

Rabbit IgG

## Storage Buffer

Supplied in PBS (pH 7.4) containing 50% glycerol, and 0.02% sodium azide.

## Storage

Store at -20 °C for one year.

## Recommended Dilutions

Western Blotting (WB): 1:500-1:2,500

**Note:** This product is for research use only.

## Validation Data

---

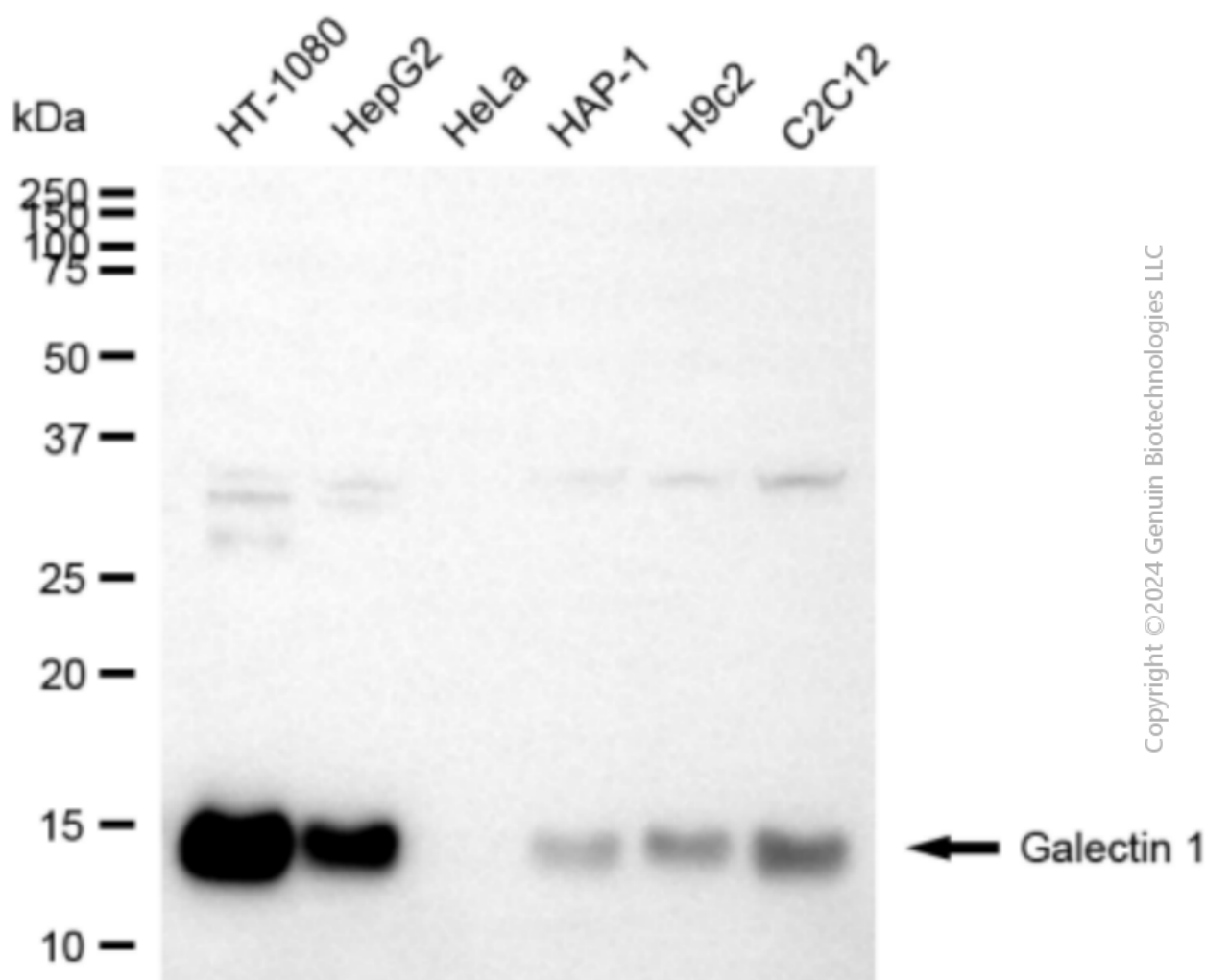
### SUPPORT

SUPPORT@GENUINBIOTECH.COM  
TEL: +1-540-855-7041

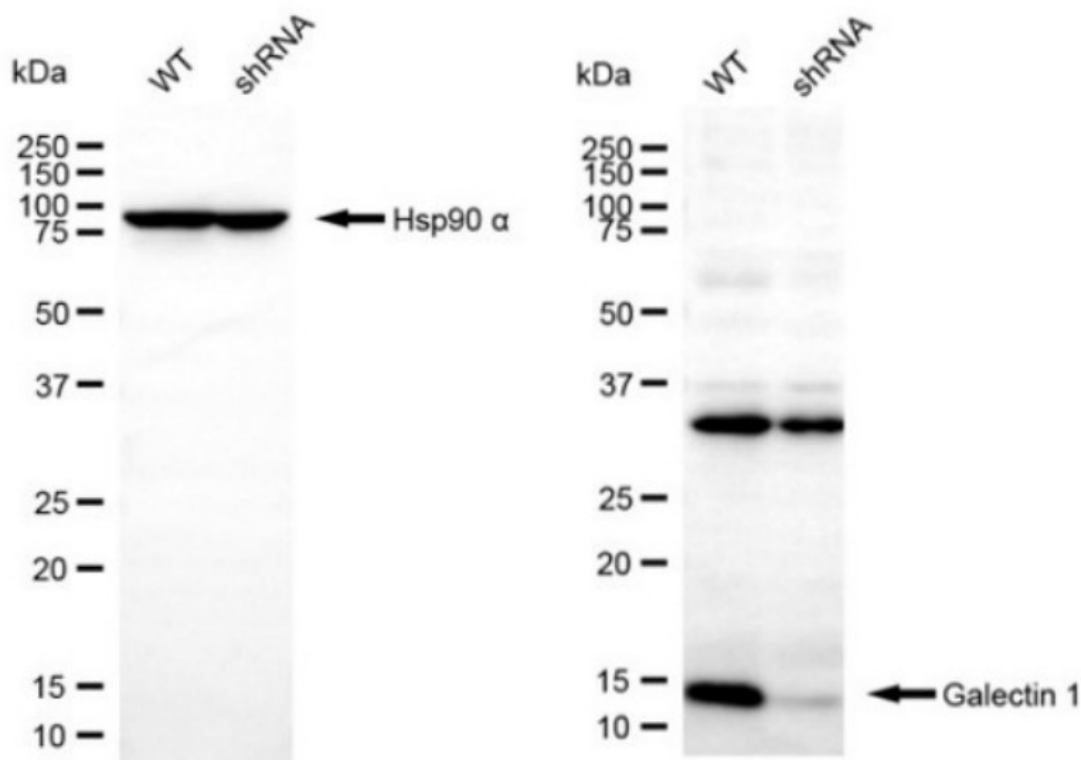
### ORDERS

SALES@GENUINBIOTECH.COM  
FAX: +1-540-855-7041

[WWW.GENUINBIOTECH.COM](http://WWW.GENUINBIOTECH.COM)



Western blotting analysis using anti-galectin 1 antibody (Cat#64961). Total cell lysates (30  $\mu$ g) from various cell lines were loaded and separated by SDS-PAGE. The blot was incubated with anti-galectin 1 antibody (Cat#64961, 1:2,500) and HRP-conjugated goat anti-rabbit secondary antibody (Cat#201, 1:20,000) respectively. Image was developed using NaQ™ ECL Substrate Kit (Cat#716).



Western blotting analysis using anti-galectin 1 antibody (Cat #64961). Galectin 1 expression in wild-type (WT) and galectin 1 (LGALS1) shRNA knockdown (KD) HeLa cells with 20  $\mu$ g of total cell lysates. Hsp90  $\alpha$  serves as a loading control. The blot was incubated with anti-galectin 1 antibody (Cat #64961, 1:2,500) and HRP-conjugated goat anti-rabbit secondary antibody (Cat #201, 1:20,000) respectively. Image was developed using FeQ™ ECL Substrate Kit (Cat #226).