

KD-Validated Anti-Galectin 3 Rabbit Polyclonal Antibody



Catalog #: 64962

Aliases

LGALS3; Galectin 3; GALIG; Advanced Glycation End-Product Receptor 3; Lectin, Galactoside-Binding, Soluble, 3; Carbohydrate-Binding Protein 35; Galactose-Specific Lectin 3; Laminin-Binding Protein; IgE-Binding Protein; 35 KDa Lectin; Lectin L-29; Galectin-3; LGALS2; MAC-2; GALBP; MAC2; Epididymis Secretory Sperm Binding Protein; Galactoside-Binding Protein; MAC-2 Antigen; Mac-2 Antigen; CBP 35; CBP35; Gal-3; GAL3; L-31; L31

Background

Gene Name: LGALS3

NCBI Gene Entry: [3958](#)

UniProt Entry: [P17931](#)

Application Information

Molecular Weight: Predicted, 26 kDa; observed, 31 kDa

Clonality: Rabbit polyclonal antibody

Species Reactivity: Human, mouse, rat

Applications Tested: Western blotting (WB)

Immunogen

A synthesized peptide derived from human Galectin 3

Isotype

Rabbit IgG

Storage Buffer

Supplied in PBS (pH 7.4) containing 50% glycerol, and 0.02% sodium azide.

Storage

Store at -20 °C for one year.

Recommended Dilutions

Western Blotting (WB): 1:500-1:2,500

Note: This product is for research use only.

Validation Data

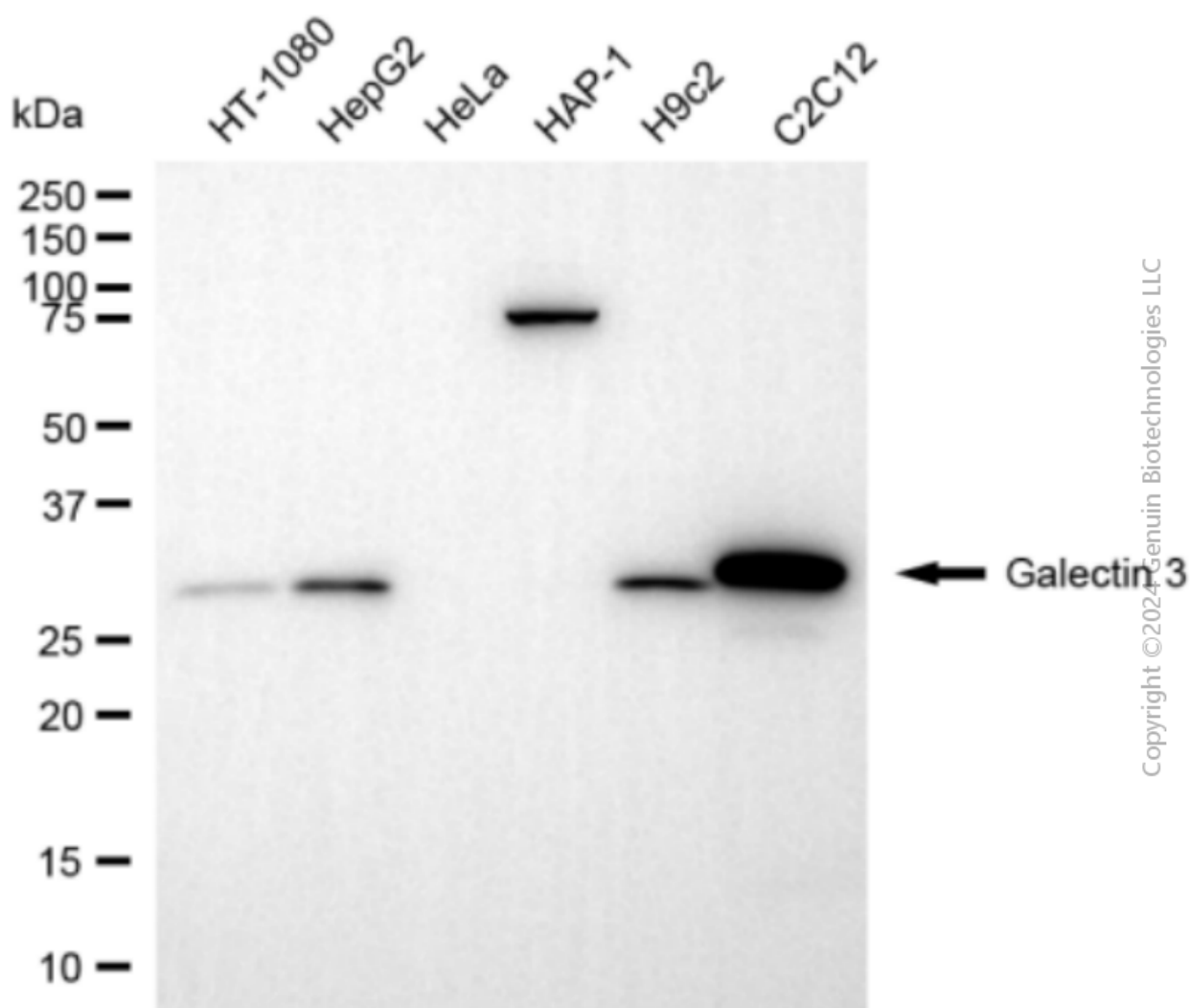
SUPPORT

SUPPORT@GENUINBIOTECH.COM
TEL: +1-540-855-7041

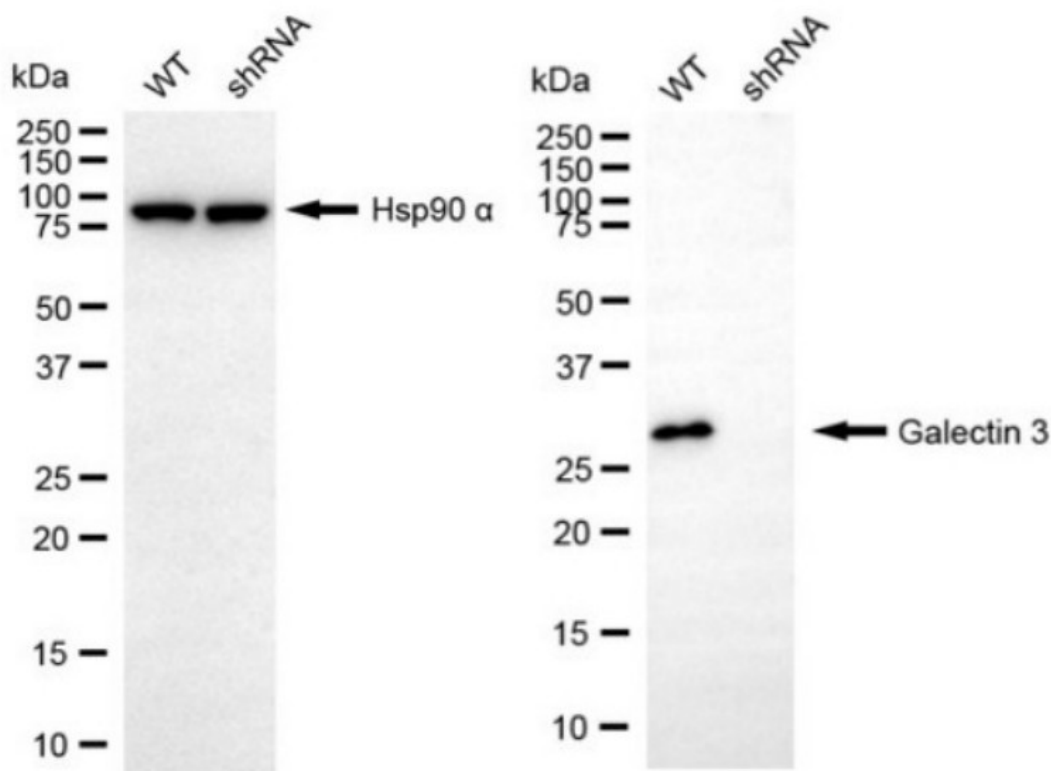
ORDERS

SALES@GENUINBIOTECH.COM
FAX: +1-540-855-7041

WWW.GENUINBIOTECH.COM



Western blotting analysis using anti-galectin 3 antibody (Cat#64962). Total cell lysates (30 µg) from various cell lines were loaded and separated by SDS-PAGE. The blot was incubated with anti-galectin 3 antibody (Cat#64962, 1:2,500) and HRP-conjugated goat anti-rabbit secondary antibody (Cat#201, 1:20,000) respectively. Image was developed using FeQ™ ECL Substrate Kit (Cat#226).



Western blotting analysis using anti-galectin 3 antibody (Cat #64962). Galectin 3 expression in wild-type (WT) and galectin 3 (LGALS3) shRNA knockdown (KD) HeLa cells with 30 μ g of total cell lysates. Hsp90 α serves as a loading control. The blot was incubated with anti-galectin 3 antibody (Cat #64962, 1:2,500) and HRP-conjugated goat anti-rabbit secondary antibody (Cat #201, 1:20,000) respectively. Image was developed using NaQTM ECL Substrate Kit (Cat #716).