

KD-Validated Anti-MAP2K1 Rabbit Polyclonal Antibody



Catalog #: 64967

Aliases

MAP2K1; Mitogen-Activated Protein Kinase Kinase 1; MEK1; MKK1; Dual Specificity Mitogen-Activated Protein Kinase Kinase 1; MAPK/ERK Kinase 1; MAPKK1; PRKMK1; ERK Activator Kinase 1; MAP Kinase Kinase 1; EC 2.7.12.2; MAPKK 1; MEK 1; Protein Kinase, Mitogen-Activated, Kinase 1 (MAP Kinase Kinase 1); CFC3; MEL

Background

Gene Name: MAP2K1

NCBI Gene Entry: [5604](#)

UniProt Entry: [Q02750](#)

Application Information

Molecular Weight: Predicted, 43 kDa; observed, 45 kDa

Clonality: Rabbit polyclonal antibody

Species Reactivity: Human, mouse, rat

Applications Tested: Western blotting (WB)

Immunogen

A synthesized peptide derived from human MKK1

Isotype

Rabbit IgG

Storage Buffer

Supplied in PBS (pH 7.4) containing 50% glycerol, and 0.02% sodium azide.

Storage

Store at -20 °C for one year.

Recommended Dilutions

Western Blotting (WB): 1:500-1:2,500

Note: This product is for research use only.

Validation Data

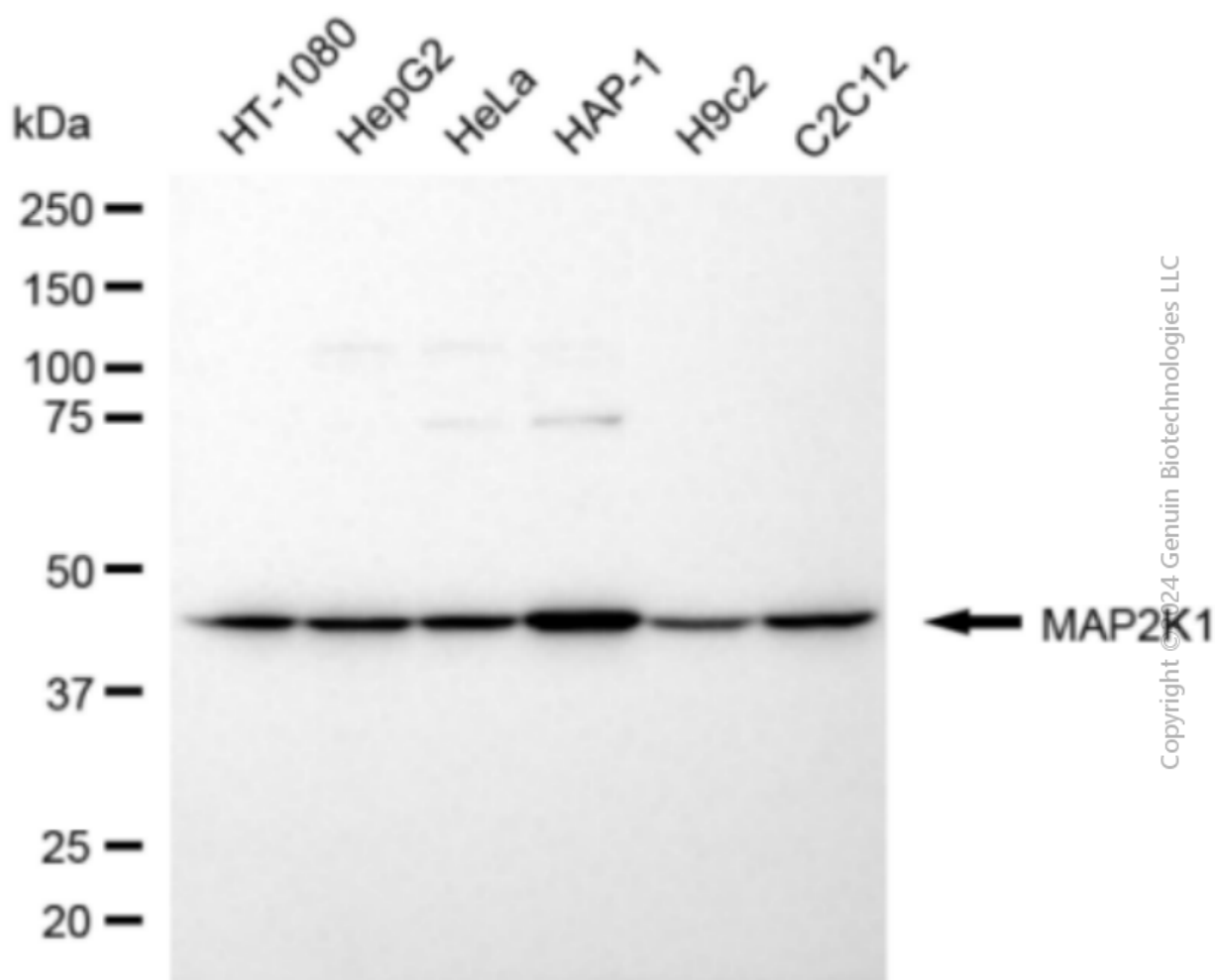
SUPPORT

SUPPORT@GENUINBIOTECH.COM
TEL: +1-540-855-7041

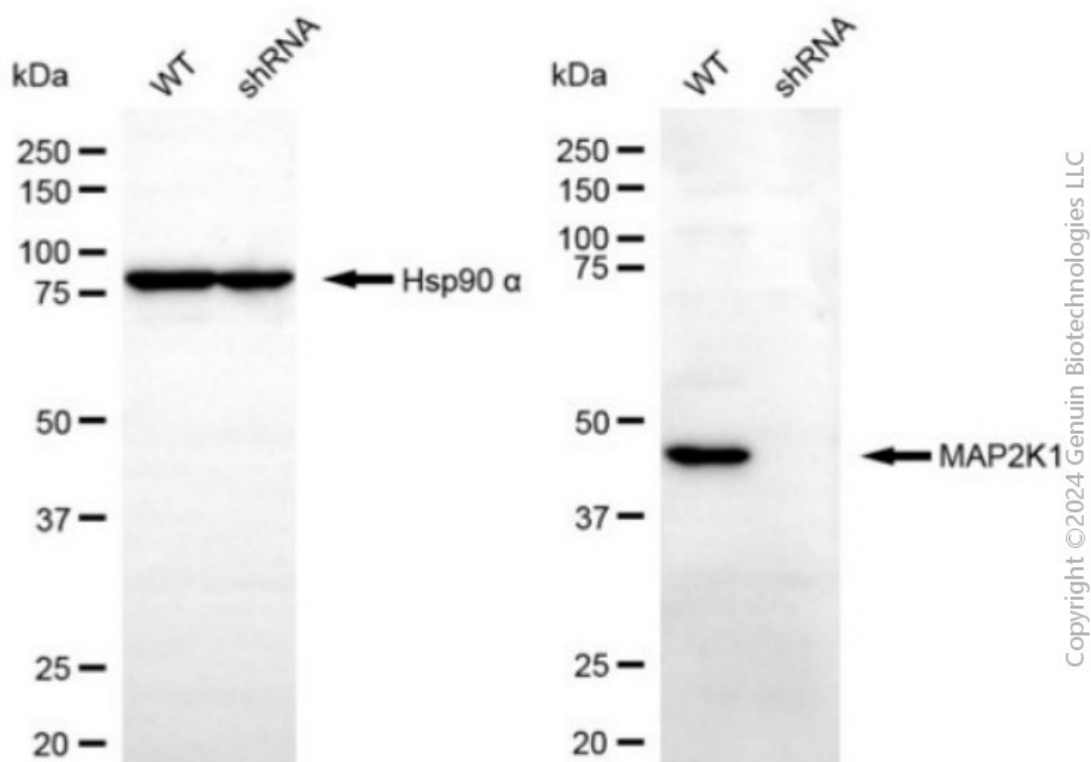
ORDERS

SALES@GENUINBIOTECH.COM
FAX: +1-540-855-7041

WWW.GENUINBIOTECH.COM



Western blotting analysis using anti-MAP2K1 antibody (Cat#64967). Total cell lysates (30 μ g) from various cell lines were loaded and separated by SDS-PAGE. The blot was incubated with anti-MAP2K1 antibody (Cat#64967, 1:2,500) and HRP-conjugated goat anti-rabbit secondary antibody (Cat#201, 1:20,000) respectively. Image was developed using NaQ™ ECL Substrate Kit (Cat#716).



Western blotting analysis using anti-MAP2K1 antibody (Cat #64967). MAP2K1 expression in wild-type (WT) and MAP2K1 shRNA knockdown (KD) HeLa cells with 20 µg of total cell lysates. Hsp90 α serves as a loading control. The blot was incubated with anti-MAP2K1 antibody (Cat #64967, 1:2,500) and HRP-conjugated goat anti-rabbit secondary antibody (Cat #201, 1:20,000) respectively. Image was developed using FeQ™ ECL Substrate Kit (Cat #226).