

KD-Validated Anti-YWHAG Rabbit Polyclonal Antibody



Catalog #: 64972

Aliases

YWHAG; Tyrosine 3-Monooxygenase/Tryptophan 5-Monooxygenase Activation Protein Gamma; 14-3-3GAMMA; PPP1R170; Tyrosine 3-Monooxygenase/Tryptophan 5-Monooxygenase Activation Protein, Gamma Polypeptide; Protein Phosphatase 1, Regulatory Subunit 170; Protein Kinase C Inhibitor Protein 1; 14-3-3 Protein Gamma; KCIP-1; 14-3-3 Gamma; 14-3-3γ; 14-3-3G; EIEE56; DEE56

Background

Gene Name: YWHAG

NCBI Gene Entry: [7532](#)

UniProt Entry: [P61981](#)

Application Information

Molecular Weight: Predicted, 28 kDa; observed, 28 kDa

Clonality: Rabbit polyclonal antibody

Species Reactivity: Human, mouse, rat

Applications Tested: Western blotting (WB)

Immunogen

A synthesized peptide derived from human 14-3-3 gamma

Isotype

Rabbit IgG

Storage Buffer

Supplied in PBS (pH 7.4) containing 50% glycerol, and 0.02% sodium azide.

Storage

Store at -20 °C for one year.

Recommended Dilutions

Western Blotting (WB): 1:500-1:2,500

Note: This product is for research use only.

Validation Data

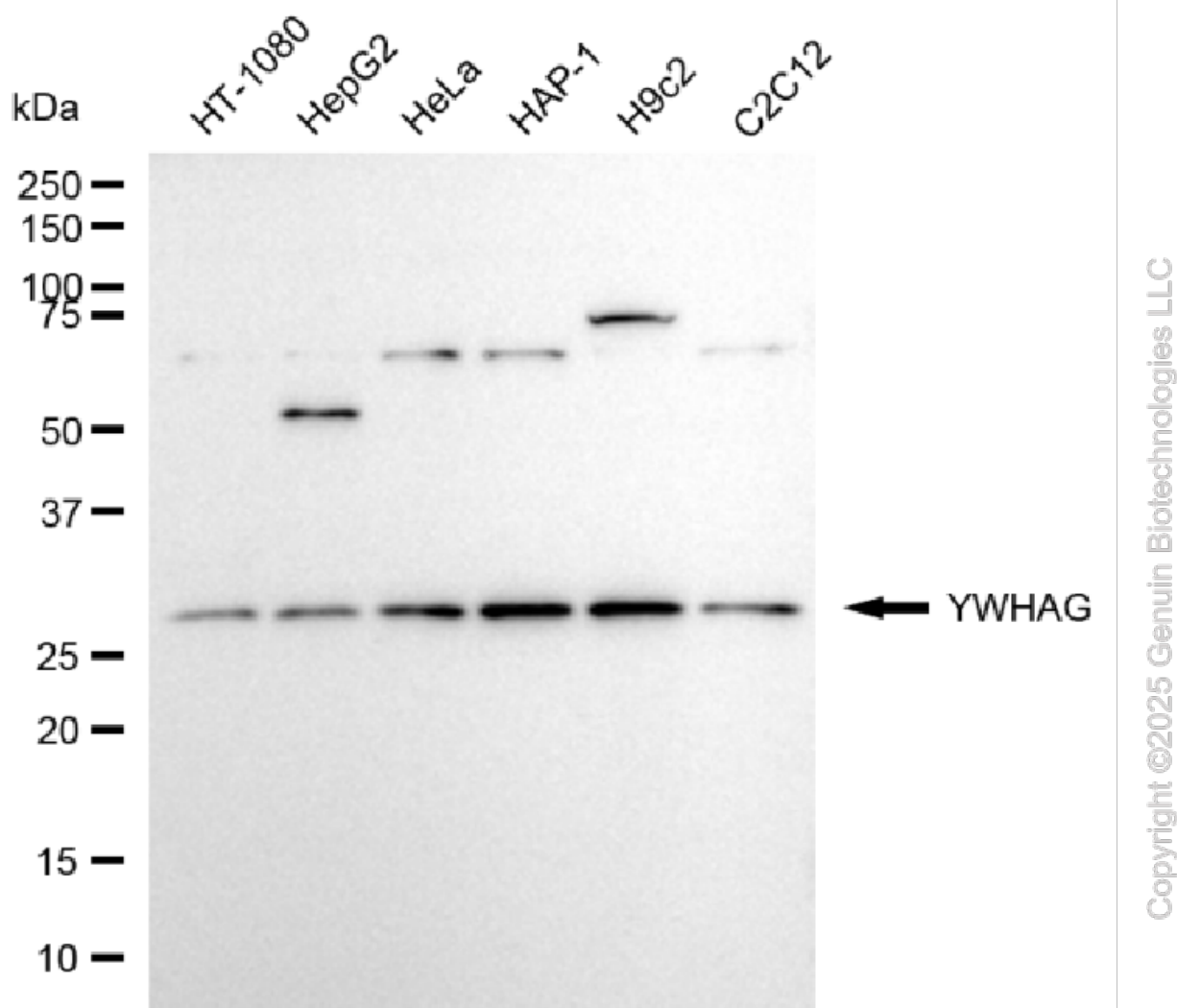
SUPPORT

SUPPORT@GENUINBIOTECH.COM
TEL: +1-540-855-7041

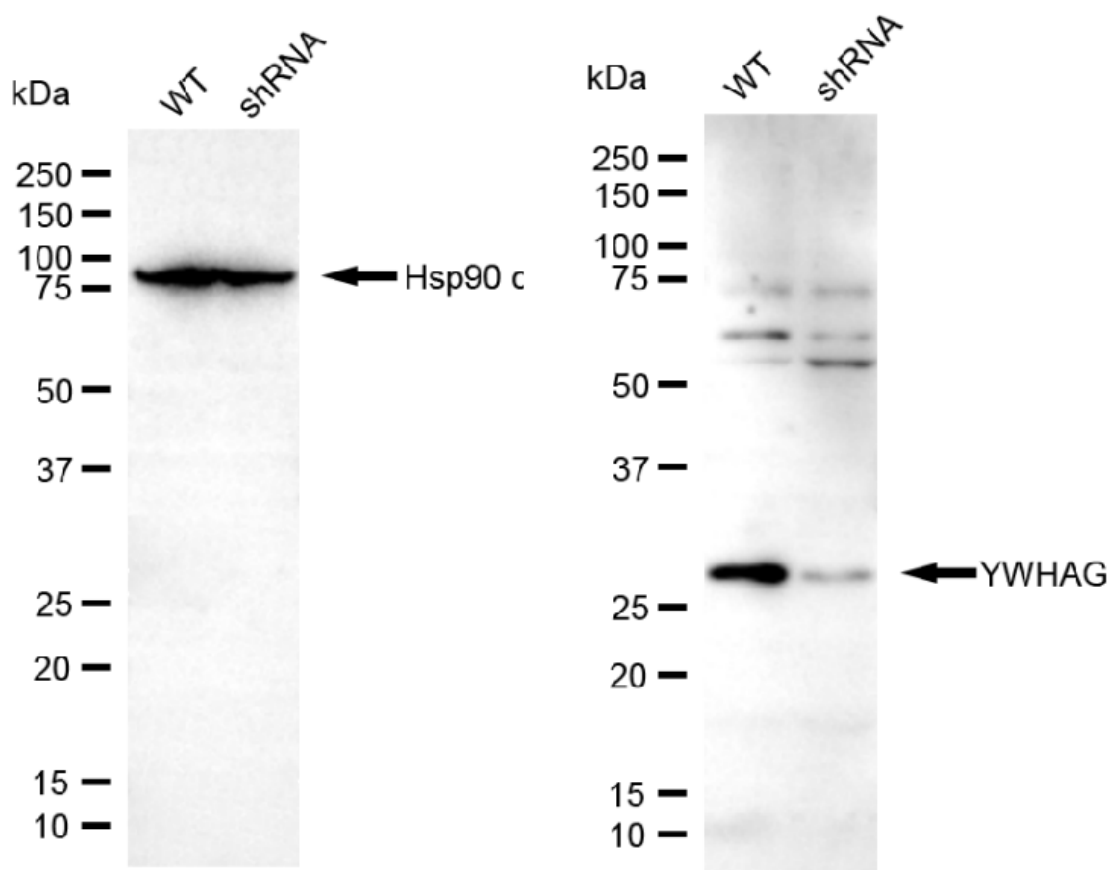
ORDERS

SALES@GENUINBIOTECH.COM
FAX: +1-540-855-7041

WWW.GENUINBIOTECH.COM



Western blotting analysis using anti-YWHAG antibody (Cat#64972). Total cell lysates (30 µg) from various cell lines were loaded and separated by SDS-PAGE. The blot was incubated with anti-YWHAG antibody (Cat#64972, 1:2,500) and HRP-conjugated goat anti-rabbit secondary antibody (Cat#201, 1:20,000) respectively. Image was developed using NaQ™ ECL Substrate Kit (Cat#716).



Copyright ©2025 Genuin Biotechnologies LLC

Western blotting analysis using anti-YWHAG antibody (Cat#64972). YWHAG expression in wild-type (WT) and YWHAG shRNA knockdown (KD) HeLa cells with 20 µg of total cell lysates. Hsp90 α serves as a loading control. The blot was incubated with anti-YWHAG antibody (Cat#64972, 1:2,500) and HRP-conjugated goat anti-rabbit secondary antibody (Cat#201, 1:20,000) respectively. Image was developed using FeQ™ ECL Substrate Kit (Cat#226).