

KD-Validated Anti-PDLIM1 Rabbit Polyclonal Antibody



Catalog #: 64976

Aliases

PDLIM1; PDZ And LIM Domain 1; CLP36; CLP-36; HCLIM1; Elfin; CLIM1; Carboxyl Terminal LIM Domain Protein 1; PDZ And LIM Domain Protein 1; LIM Domain Protein CLP-36; Epididymis Secretory Protein Li 112; C-Terminal LIM Domain Protein 1; PDZ And LIM Domain 1 (Elfin); HEL-S-112

Background

Gene Name: PDLIM1
NCBI Gene Entry: [9124](#)
UniProt Entry: [O00151](#)

Application Information

Molecular Weight: Predicted, 36 kDa; observed, 35 kDa
Clonality: Rabbit polyclonal antibody
Species Reactivity: Human, mouse, rat
Applications Tested: Western blotting (WB)

Immunogen

A synthesized peptide derived from human PDLIM1

Isotype

Rabbit IgG

Storage Buffer

Supplied in PBS (pH 7.4) containing 50% glycerol, and 0.02% sodium azide.

Storage

Store at -20 °C for one year.

Recommended Dilutions

Western Blotting (WB): 1:500-1:2,500

Note: This product is for research use only.

Validation Data

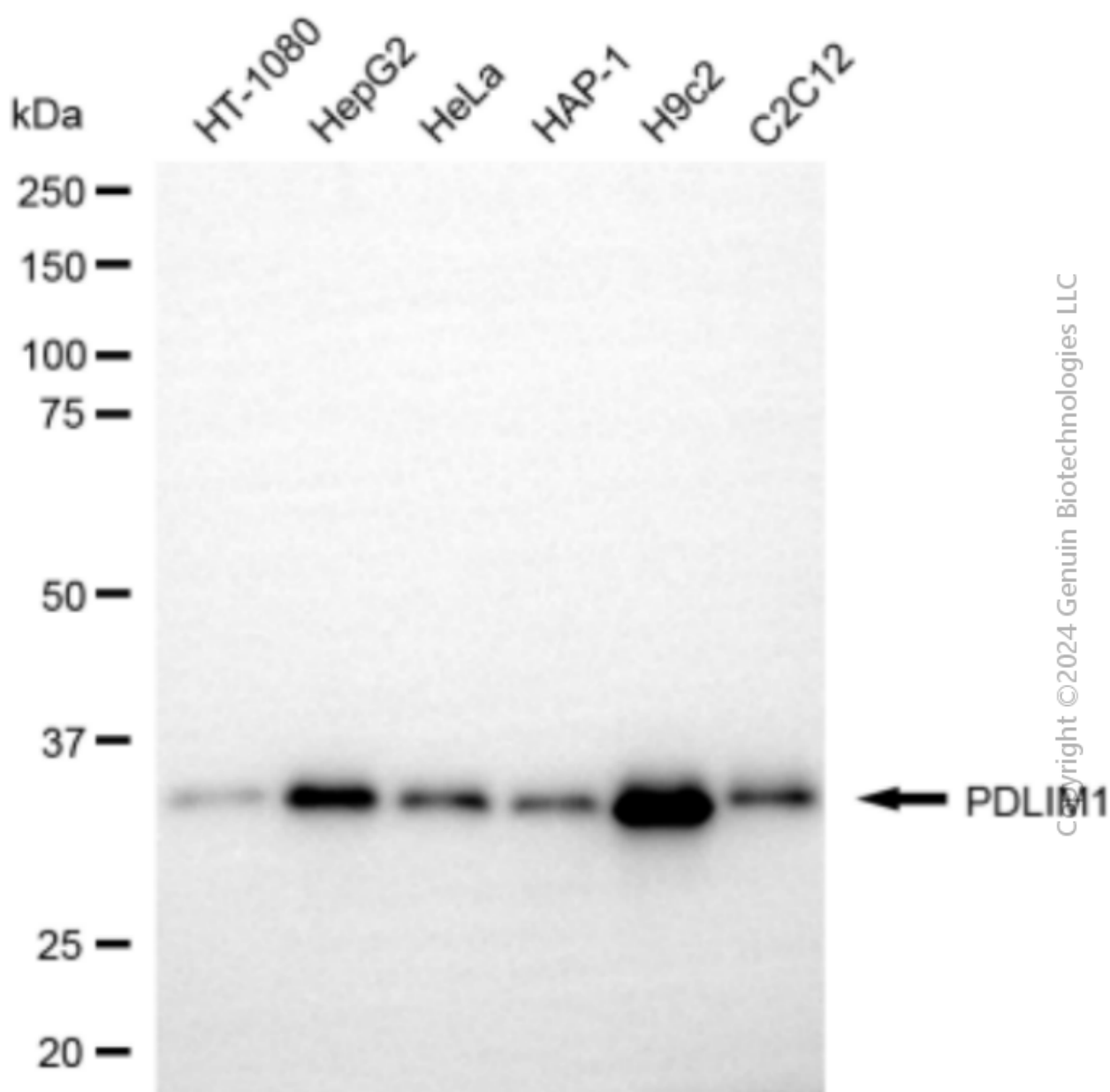
SUPPORT

SUPPORT@GENUINBIOTECH.COM
TEL: +1-540-855-7041

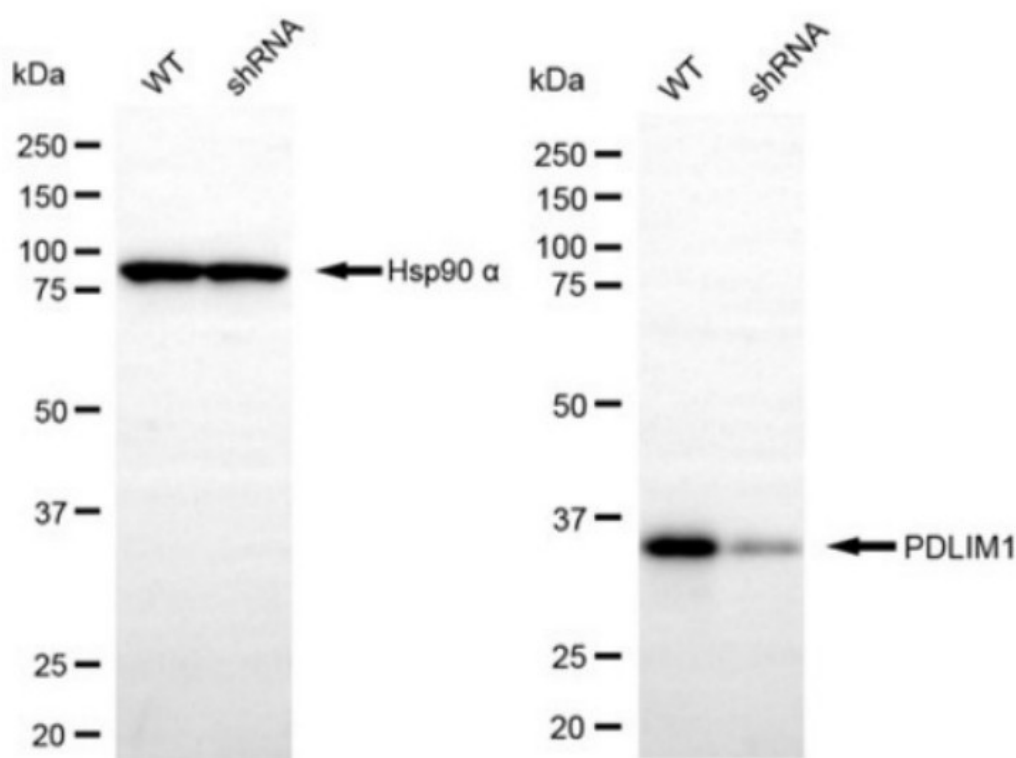
ORDERS

SALES@GENUINBIOTECH.COM
FAX: +1-540-855-7041

WWW.GENUINBIOTECH.COM



Western blotting analysis using anti-PDLIM1 antibody (Cat#64976). Total cell lysates (20 μ g) from various cell lines were loaded and separated by SDS-PAGE. The blot was incubated with anti-PDLIM1 antibody (Cat#64976, 1:2,500) and HRP-conjugated goat anti-rabbit secondary antibody (Cat#201, 1:20,000) respectively. Image was developed using NaQ™ ECL Substrate Kit (Cat#716).



Copyright ©2024 Genuin Biotechnologies LLC

Western blotting analysis using anti-PDLIM1 antibody (Cat #64976). PDLIM1 expression in wild-type (WT) and PDLIM1 shRNA knockdown (KD) HeLa cells with 20 µg of total cell lysates. Hsp90 α serves as a loading control. The blot was incubated with anti-PDLIM1 antibody (Cat #64976, 1:2,500) and HRP-conjugated goat anti-rabbit secondary antibody (Cat #201, 1:20,000) respectively. Image was developed using NaQ™ ECL Substrate Kit (Cat #716).