

KD-Validated Anti-UBR5 Rabbit Polyclonal Antibody



Catalog #: 64984

Aliases

UBR5; Ubiquitin Protein Ligase E3 Component N-Recognin 5; HYD; EDD; KIAA0896; EDD1; DD5; E3 Ubiquitin-Protein Ligase, HECT Domain-Containing 1; Hyperplastic Discs Protein Homolog; E3 Ubiquitin-Protein Ligase UBR5; Progesterone-Induced Protein; E3 Ubiquitin Protein Ligase, HECT Domain Containing, 1; HECT-Type E3 Ubiquitin Transferase UBR5; E3 Identified By Differential Display; EC 2.3.2.26; EC 6.3.2; HHYD

Background

Gene Name: UBR5

NCBI Gene Entry: [51366](#)

UniProt Entry: [O95071](#)

Application Information

Molecular Weight: Predicted, 309 kDa; observed, 309 kDa

Clonality: Rabbit polyclonal antibody

Species Reactivity: Human, mouse, rat

Applications Tested: Western blotting (WB)

Immunogen

A synthesized peptide derived from human UBR5

Isotype

Rabbit IgG

Storage Buffer

Supplied in PBS (pH 7.4) containing 50% glycerol, and 0.02% sodium azide.

Storage

Store at -20 °C for one year.

Recommended Dilutions

Western Blotting (WB): 1:500-1:2,500

Note: This product is for research use only.

Validation Data

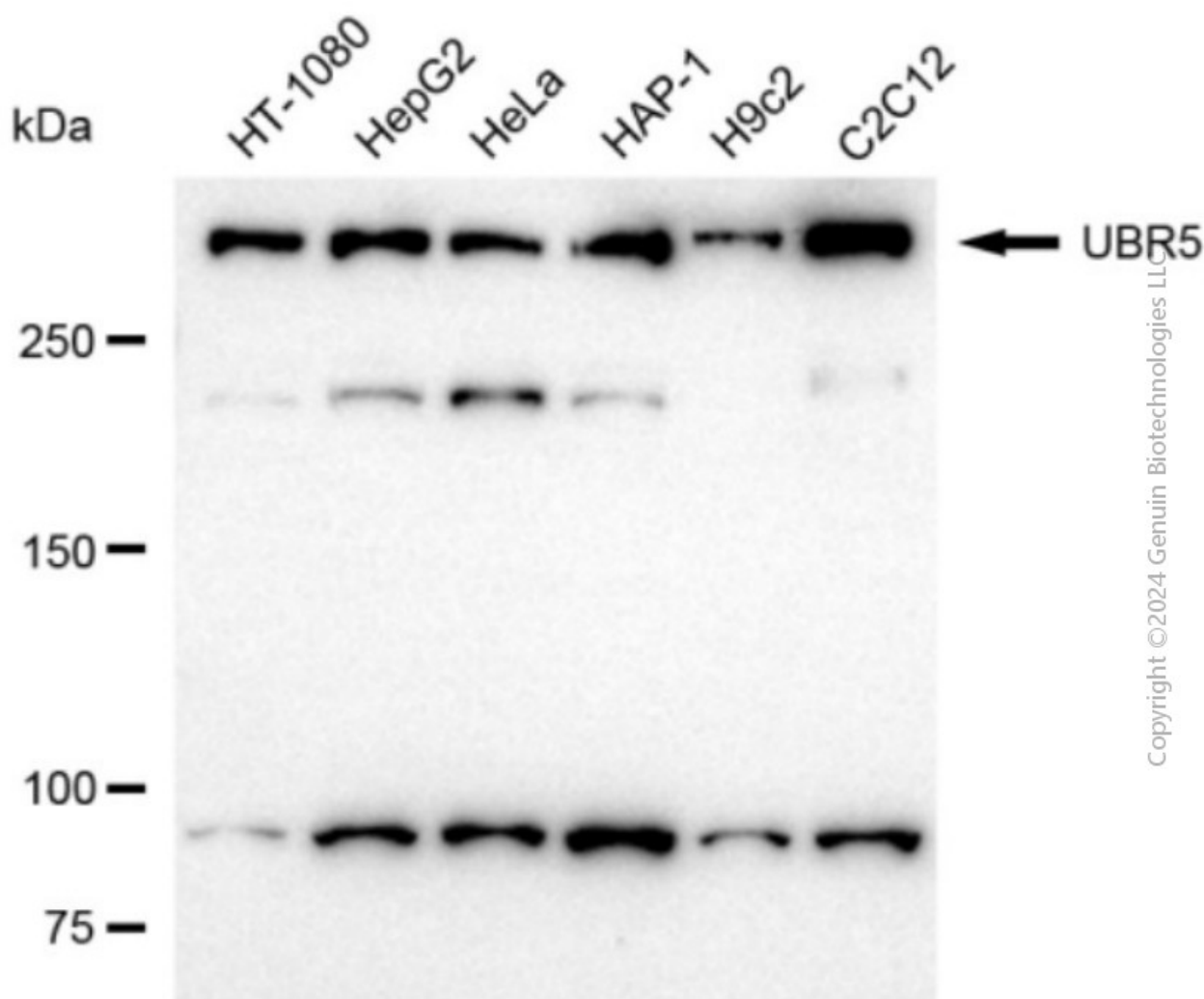
SUPPORT

SUPPORT@GENUINBIOTECH.COM
TEL: +1-540-855-7041

ORDERS

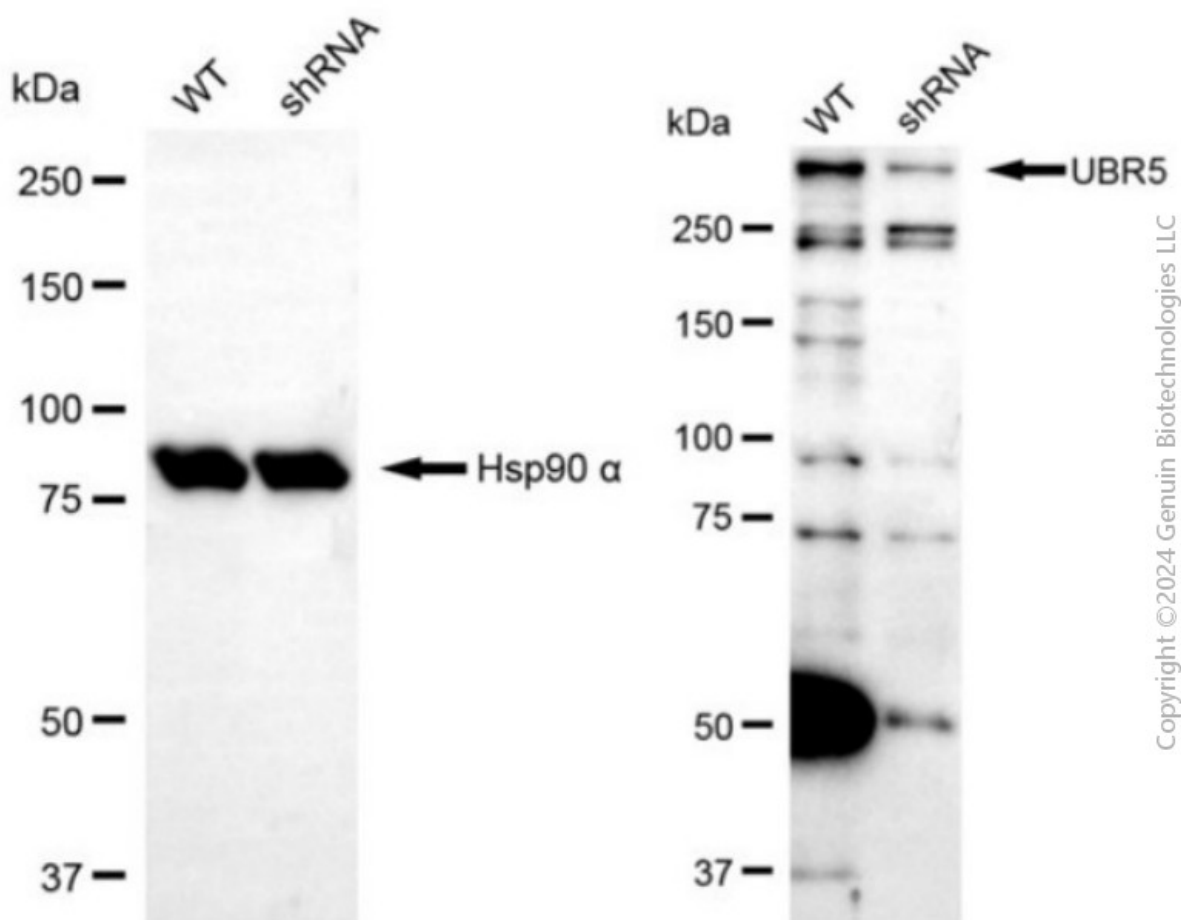
SALES@GENUINBIOTECH.COM
FAX: +1-540-855-7041

WWW.GENUINBIOTECH.COM



Copyright ©2024 Genuin Biotechnologies LLC

Western blotting analysis using anti-UBR5 antibody (Cat#64984). Total cell lysates (30 µg) from various cell lines were loaded and separated by SDS-PAGE. The blot was incubated with anti-UBR5 antibody (Cat#64984, 1:2,500) and HRP-conjugated goat anti-rabbit secondary antibody (Cat#201, 1:20,000) respectively. Image was developed using NaQ™ ECL Substrate Kit (Cat#716).



Western blotting analysis using anti-UBR5 antibody (Cat#64984). UBR5 expression in wild-type (WT) and UBR5 shRNA knockdown (KD) HeLa cells with 20 μ g of total cell lysates. Hsp90 α serves as a loading control. The blot was incubated with anti-UBR5 antibody (Cat#64984, 1:2,500) and HRP-conjugated goat anti-rabbit secondary antibody (Cat#201, 1:20,000) respectively. Image was developed using NaQ™ ECL Substrate Kit (Cat#716).