

KD-Validated Anti-PLSCR1 Rabbit Polyclonal Antibody



Catalog #: 64986

Aliases

PLSCR1; Phospholipid Scramblase 1; MMTRA1B; Ca(2+)-Dependent Phospholipid Scramblase 1; Erythrocyte Phospholipid Scramblase; Mg(2+)-Dependent Nuclease; PL Scramblase 1; EC 3.1.-.- ; MmTRA1b

Background

Gene Name: PLSCR1

NCBI Gene Entry: [5359](#)

UniProt Entry: [O15162](#)

Application Information

Molecular Weight: Predicted, 35 kDa; observed, 31 kDa

Clonality: Rabbit polyclonal antibody

Species Reactivity: Human

Applications Tested: Western blotting (WB)

Immunogen

A synthesized peptide derived from human PLSCR1

Isotype

Rabbit IgG

Storage Buffer

Supplied in PBS (pH 7.4) containing 50% glycerol, and 0.02% sodium azide.

Storage

Store at -20 °C for one year.

Recommended Dilutions

Western Blotting (WB): 1:500-1:2,500

Note: This product is for research use only.

Validation Data

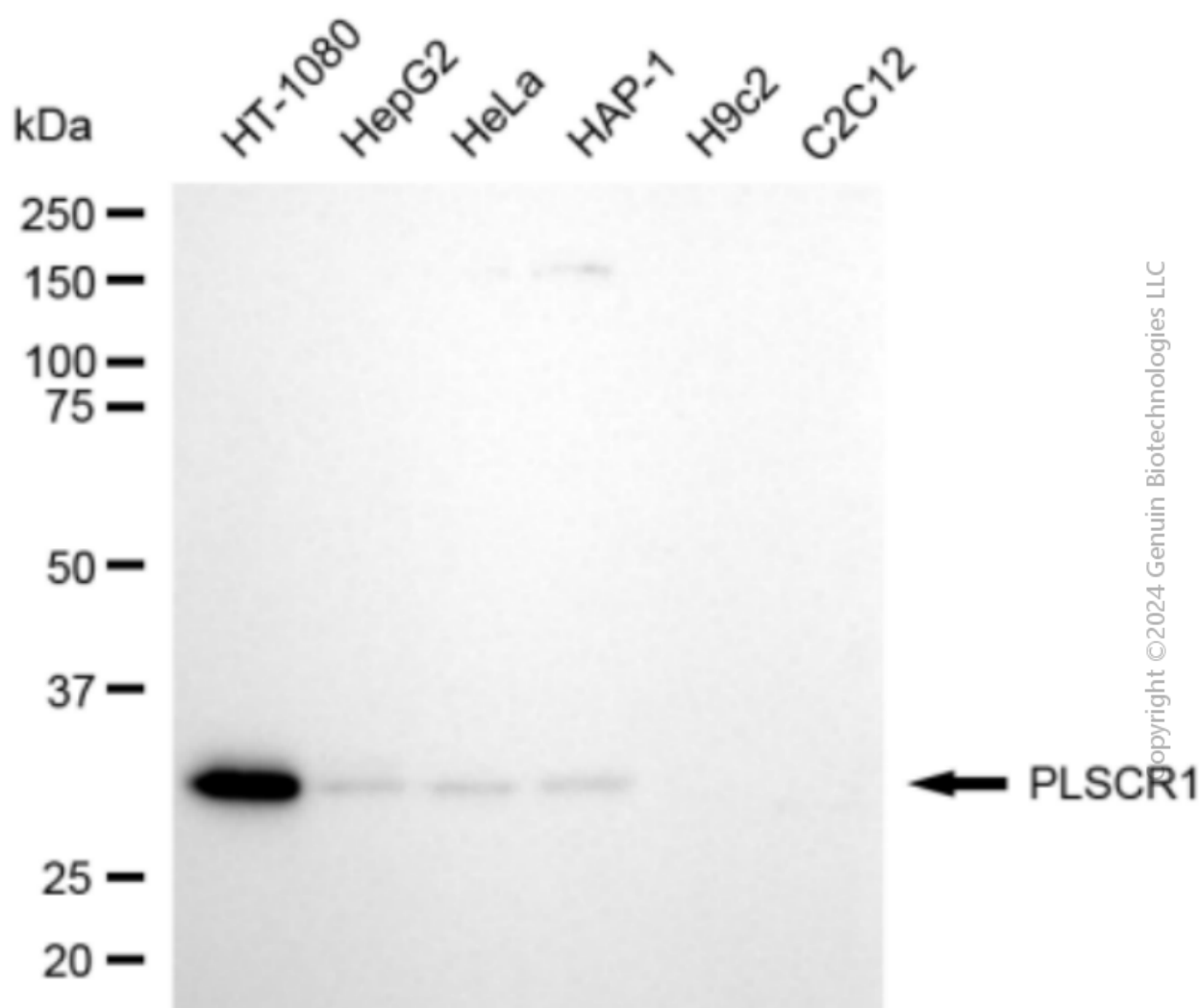
SUPPORT

SUPPORT@GENUINBIOTECH.COM
TEL: +1-540-855-7041

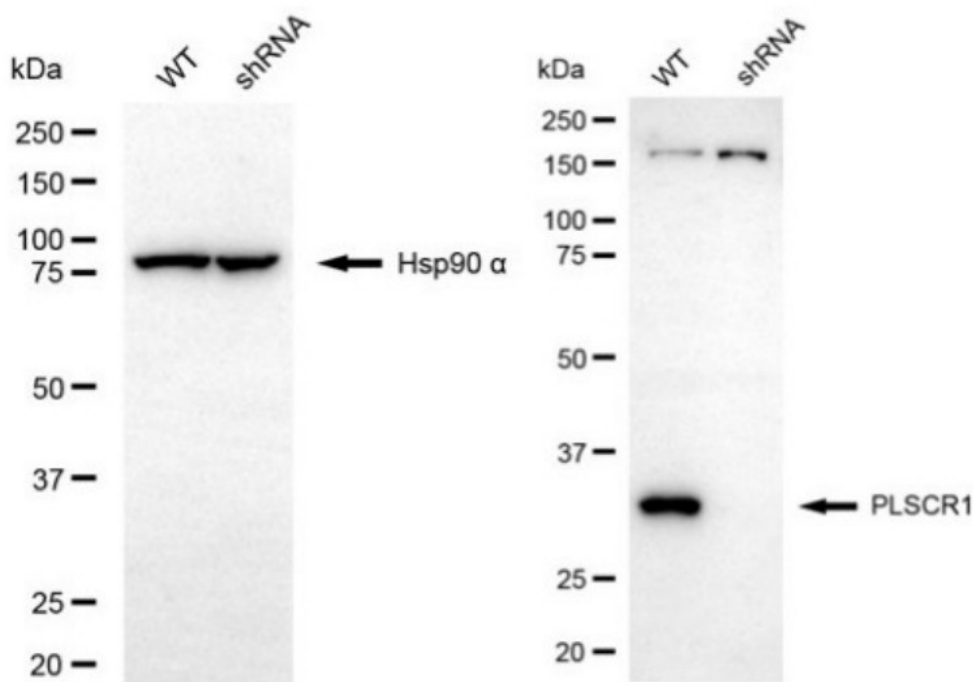
ORDERS

SALES@GENUINBIOTECH.COM
FAX: +1-540-855-7041

WWW.GENUINBIOTECH.COM



Western blotting analysis using anti-PLSCR1 antibody (Cat#64986). Total cell lysates (30 μ g) from various cell lines were loaded and separated by SDS-PAGE. The blot was incubated with anti-PLSCR1 antibody (Cat#64986, 1:2,500) and HRP-conjugated goat anti-rabbit secondary antibody (Cat#201, 1:20,000) respectively. Image was developed using NaQ™ ECL Substrate Kit (Cat#716).



Copyright © 2024 Genuin Biotechnologies LLC

Western blotting analysis using anti-PLSCR1 antibody (Cat #64986). PLSCR1 expression in wild-type (WT) and PLSCR1 shRNA knockdown (KD) HeLa cells with 20 μ g of total cell lysates. Hsp90 α serves as a loading control. The blot was incubated with anti-PLSCR1 antibody (Cat #64986, 1:2,500) and HRP-conjugated goat anti-rabbit secondary antibody (Cat #201, 1:20,000) respectively. Image was developed using FeQ™ ECL Substrate Kit (Cat #226).